

Product datasheet for **RG224855**

AP2 alpha (AP2A1) (NM_014203) Human Tagged ORF Clone

Product data:

Product Type:	Expression Plasmids
Product Name:	AP2 alpha (AP2A1) (NM_014203) Human Tagged ORF Clone
Tag:	TurboGFP
Symbol:	AP2 alpha
Synonyms:	ADTAA; AP2-ALPHA; CLAPA1
Mammalian Cell Selection:	Neomycin
Vector:	pCMV6-AC-GFP (PS100010)
E. coli Selection:	Ampicillin (100 ug/mL)



[View online »](#)

ORF Nucleotide Sequence:

>RG224855 representing NM_014203
 Red=Cloning site Blue=ORF Green=Tags(s)

TTTTGTAATACGACTCACTATAGGGCGGCCGGGAATTCGTCGACTGGATCCGGTACCGAGGAGATCTGCC
 GCC**CGGATCGCC**

ATGCCGGCCGTGTCCAAGGGCGATGGGATGCGGGGGCTCGCGGTGTTTCATCTCCGACATCCGGAAGTGA
 AGAGCAAAGAGGCGGAAATTAAGAGAATCAACAAGGAAGTGGCCAACATCCGCTCCAAGTCAAAGGAGA
 CAAAGCCTTGGATGGCTACAGTAAGAAAAATATGTGTGTAAACTGCTTTTCATCTTCTGCTTGGCCAT
 GACATTGACTTTGGGCACATGGAGGCTGTGAATCTGTTGAGTTCCAATAAATACACAGAGAAGCAAATAG
 GTTACCTGTTCAATTTCTGTGCTGGTGAAGTCTGAACTCGGAGCTGATCCGCCTCATCAACAACGCCATCAA
 GAATGACCTGGCCAGCCGAACCCACCTTCATGTGCCTGGCCCTGCACTGCATCGCCAACGTGGGCAGC
 CGGGAGATGGGCGAGGCCCTTGGCCGTGACATCCCCGCATCCTGGTGGCCGGGACAGCATGGACAGTG
 TCAAGCAGAGTGGGCCCTGTGCCTCCTTCGACTGTACAAGGCCCTGCCTGACCTGGTGGCCATGGGCGA
 GTGGACGGCGGTGTGGTACACCTGCTCAATGACCAGCACATGGGTGTGGTACGCGCCGGCTCAGCCTC
 ATCACCTGTCTCTGCAAGAAGAACCAGATGACTTCAAGACGTGCGTCTCTCTGGCTGTGTGCGCCCTGA
 GCCGGATCGTCTCCTCTGCCTCCACCGACCTCCAGGACTACACCTACTACTTCGTCGCCAGCACCTGGCT
 CTCGGTGAAGCTCCTGCGGCTGCTGCAAGTACACCGCCTCCAGAGGATGCGGCTGTGAAGGGGCGGCTG
 GTGGAATGTCTGGAGACTGTGCTCAACAAGGCCAGGAGCCCCCAAATCCAAGAAGGTGCAGCATTCCA
 ACGCAAAGAAGCCATCCTCTTCGAGACCATCAGCCTCATCATCCACTATGACAGTGAGCCCAACCTCCT
 GGTTGGGCTGCAACCAGCTGGCCAGTTCCTGCAGCACCAGGAGCAACCTGCGCTACCTGGCCCTG
 GAGAGCATGTGCACGCTGGCCAGCTCCGAGTTCCTCCATGAAGCCGTCAAGACGCACATTGACCCGTCA
 TCAATGCCCTCAAGACGGAGCGGAGCTCAGCGTGCAGCAGCGGGCGGCTGACCTCCTACGCCATGTG
 TGACCGGAGCAATGCCAAGCAGATCGTGTGCGAGATGCTGCGGTACCTGGAGACGGCAGACTACGCCATC
 CGCGAGGAGATCGTCTGAAGGTGGCCATCCTGGCCGAGAAGTACGCGGTGGACTACAGCTGGTACGTGG
 ACACCATCCTCAACCTCATCCGATTGCGGGGACTACGTGAGTGAGGAGGTGTGGTACCGTGTGTACATA
 GATCGTACCAACCGTATGACGTCCAGGGCTATGCCGCAAGACCGTCTTTGAGGCGCTCCAGGCCCT
 GCCTGTCACGAGAATGGTGAAGTTGGCGGCTACATCCTTGGGGAGTTTGGAACTGATTGCTGGGG
 ACCCCCGCTCCAGCCCCAGTGCAGTTCTCCCTGCTCCACTCCAAGTTCATCTGTGCAGCGTGGCCAC
 GCGGGCGTGTGTGTCCACCTACATCAAGTTCATCAACCTCTTCCCGAGACCAAGGCCACCATCCAG
 GCGTCTGCGGGCCGGCTCCCAGCTGCGCAATGTGACGTGGAGCTGCAGCAGCGAGCCGTGGAGTACC
 TCAACCTCAGCTCAGTGGCCAGCACCGAGTCTGCGCCAGGTGCTGGAGGAGATGCCGCCCTTCCCGA
 GCGGAGTCTGATCCTGGCCAAGCTGAAACGCAAGAAGGGGCCAGGGCCGGCAGCGCCCTGGACGAT
 GGCCGGAGGGACCCAGCAGCAACGACATCAACGGGGGATGGAGCCACCCAGCACTGTGTGACGCG
 CCTCGCCCTCCGCGACCTCCTGGGGCTGCGGGCAGCCCTCCCCGGCAGCACCCCGGCTTCTGACGG
 AGCAGGGAACCTTCTGGTGGAGCTTTCGATGGCCCGCCGCCCAGCCAGCCTGGGGGCCACCCCGAG
 GAGGCTTCTCAGCGAGCTGGAGCCGCTGCCCCGAGAGCCCATGGCTTTGCTGGTGAACCAAGTT
 TGTGTGAAGAACAACGGGTCTGTTTCGAGAACCAGCTGCTGCAGATCGGAGTCAAGTCAAGTTCGGA
 CAGAACCTGGGCGCATGTATCTTCTATGGCAACAAGACCTCGGTGCAGTTCAGAAATTTCTACCCCA
 CTGTGTTTACCCGGGAGACCTCCAGACTCAGCTGGCTGTGCAGACCAAGCGCTGGCGGCGCAGGTGGA
 CGGCGGCGCAGGTGCAGCAGGTGCTCAATATCGAGTGCCTGCGGGACTTCTGACGCCCCGCTGCTG
 TCCGTGCGCTTCCGGTACGGTGGCGCCCCAGGCCCTCACCTGAAGCTCCAGTGACCATCAACAAGT
 TCTTCCAGCCACCGAGATGGCGGCCAGGATTTCTTCCAGCGCTGGAAGCAGCTGAGCCTCCCTCAACA
 GGAGGCGCAGAAAATCTTCAAAGCAACCACCCATGGACGCAGAAGTTACTAAGCCAAGCTTCTGGGG
 TTTGGCTCTGCTCTCCTGGACAATGTGGACCCCAACCTGAGAATTCGTGGGGGCGGGGATCATCCAGA
 CTAAGCCCTGCAGGTGGGCTGTCTGCTTCGGCTGGAGCCCAATGCCAGGCCAGATGTACCGGCTGAC
 CCTGCGCACAGCAAGGAGCCCGTCTCCGTCACCTGTGTGAGCTGCTGGCACAGCAGTTT

ACGCGTACGCGGCCGCTCGAG – GFP Tag – GTTTAA

Protein Sequence: >RG224855 representing NM_014203
 Red=Cloning site Green=Tags(s)

MPAVSKGDGMRGLAVFISDIRNCKSKEAEIKRINKELANIRSKFKGDKALDGYSKKKYVCKLLFIFLLGH
 DIDFGHMEAVNLLSSNKYTEKQIGYLFISVLVNSNSELIRLINNAIKNDLASRNPFTMCLALHCIANVGS
 REMGEAFAADIPRILVAGDSMDSVKQSAALCLLRLYKASPDLPVPMGEWTRVHLLNDQHMVVTAAVSL
 ITCLCKKNPDDFKTCVSLAVSRLSRIVSSASTDLQDYTYFVFPAPWLSVKLLRLLQCYPPEDAAVKGR
 VECLLETVLNKAQEPKSKVQHSNAKNAILFETISLIHHDSEPNLLVRACNQLGQFLQHRETNLRYLAL
 ESMCTLASSEFSHEAVKTHIDTVINALKTERDVSVRQRAADLLYAMCDRSNAKQIVSEMLRYLETADYAI
 REEIVLKVAILAEKYAVDYSWYVDITLNLIRIAGDYVSEEVWYRVLQIVTNRDDVQGYAAKTVFEALQAP
 ACHENMVKVGGYILGEFGNLIAGDPRSSPPVQFSLHHSKFHLCVATRALLLSTYIKFINLFPETKATIQ
 GVLRAGSQLRNADVELQQRAVEYLTSSVASTDVLATVLEEMPPFPERESSILAKLKRKKGPGAGSALDD
 GRRDPSSNDINGMEPTPSTVSTSPSADLLGLRAAPPAAPPASAGAGNLLVDVFDGPAAPQLGPTPE
 EAFLELEPPAPESPMALLADPAPAADPGPEDIGPPIPEADELLNKFVCKNNGVLFENQLLQIGVKSEFR
 QNLGRMYLFGYGNKTSVQFQNFSPTVVHPGDLQTLAVQTKRVAQVDGGAQVQVNLNIECLRDFLTPPLL
 SVRFRYGGAPQALTLKLPVTINKFFQPTMAAQDFFQRWKQLSLPQQEAQKIFKANHPMDAEVTKAKLLG
 FGSALLDNVDPNPENFVGAGIIQTKALQVGCLLRLEPNAQAQMYRLTLRTSKEPVSRLCELLAQQF

TRTRPLE - GFP Tag - V

Restriction Sites: SgfI-MluI

Cloning Scheme:

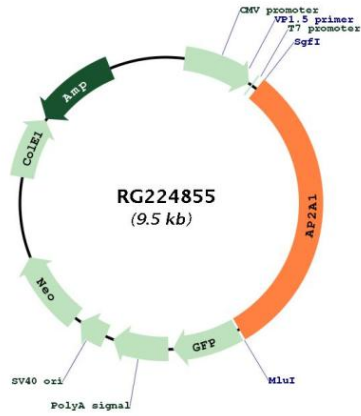


ACCN: NM_014203

ORF Size: 2931 bp

OTI Disclaimer:	The molecular sequence of this clone aligns with the gene accession number as a point of reference only. However, individual transcript sequences of the same gene can differ through naturally occurring variations (e.g. polymorphisms), each with its own valid existence. This clone is substantially in agreement with the reference, but a complete review of all prevailing variants is recommended prior to use. More info
OTI Annotation:	This clone was engineered to express the complete ORF with an expression tag. Expression varies depending on the nature of the gene.
Components:	The ORF clone is ion-exchange column purified and shipped in a 2D barcoded Matrix tube containing 10ug of transfection-ready, dried plasmid DNA (reconstitute with 100 ul of water).
Reconstitution Method:	<ol style="list-style-type: none">1. Centrifuge at 5,000xg for 5min.2. Carefully open the tube and add 100ul of sterile water to dissolve the DNA.3. Close the tube and incubate for 10 minutes at room temperature.4. Briefly vortex the tube and then do a quick spin (less than 5000xg) to concentrate the liquid at the bottom.5. Store the suspended plasmid at -20°C. The DNA is stable for at least one year from date of shipping when stored at -20°C.
RefSeq:	NM_014203.3
RefSeq Size:	3499 bp
RefSeq ORF:	2934 bp
Locus ID:	160
UniProt ID:	O95782
Cytogenetics:	19q13.33
Domains:	Adaptin_N, Alpha_adaptin_C, Alpha_adaptinC2
Protein Pathways:	Endocytosis, Huntington's disease
Gene Summary:	This gene encodes the alpha 1 adaptin subunit of the adaptor protein 2 (AP-2) complex found in clathrin coated vesicles. The AP-2 complex is a heterotetramer consisting of two large adaptins (alpha or beta), a medium adaptin (mu), and a small adaptin (sigma). The complex is part of the protein coat on the cytoplasmic face of coated vesicles which links clathrin to receptors in vesicles. Alternative splicing of this gene results in two transcript variants encoding two different isoforms. A third transcript variant has been described, but its full length nature has not been determined. [provided by RefSeq, Jul 2008]

Product images:



Circular map for RG224855