

## Product datasheet for **RG224837**

### ATR (NM\_001184) Human Tagged ORF Clone

#### Product data:

Product Type:	Expression Plasmids
Product Name:	ATR (NM_001184) Human Tagged ORF Clone
Tag:	TurboGFP
Symbol:	ATR
Synonyms:	FCTCS; FRP1; MEC1; SCKL; SCKL1
Mammalian Cell Selection:	Neomycin
Vector:	pCMV6-AC-GFP (PS100010)
E. coli Selection:	Ampicillin (100 ug/mL)
ORF Nucleotide Sequence:	>RG224837 representing NM_001184 Red=Cloning site Blue=ORF Green=Tags(s)

TTTTGTAATACGACTCACTATAGGGCGGCCGGAATTCGTCGACTGGATCCGGTACCGAGGAGATCTGCC  
GCC**CGATCGCC**

ATGGGGGAACATGGCCTGGAGCTGGCTTCCATGATCCCCGCCCTGCGGGAGCTGGGCAGTGCCACACCAG  
AGGAATATAATACAGTTGTACAGAAGCCAAGACAAATTCTGTGTCAATTCATTGACCGGATACTTACAGA  
TGTAATGTTGTTGCTGTAGAATTGTAAGAAAAGTACTCTCAGCCAACCTCCGTGATGTTGCTTGAT  
TTCATCCAGCATATCATGAAATCCTCCCACTTATGTTTGTAAATGTGAGTGAAGCCATGAGCGCAAAG  
GCAGTTGATTGAATTCAGTAATTGGATCATAACGAGACTTCTGCGGATTGCAGCAACTCCCTCCTGTCA  
TTTGTTACACAAGAAAATCTGTGAAGTCATCTGTTCAATTATTCTTTTTAAAAGCAAGAGTCCCTGCT  
ATTTTTGGGTACTCACAAAAGAATTATCAACTTTTTGAAGACTTGGTTTACCTCCATAGAAGAAATG  
TGATGGGTGATGCTGTGGAATGGCCAGTGGTTCATGAGCCGATTTTTAAGTCAATTAGATGAACACATGGG  
ATATTTACAATCAGCTCCTTTGCAGTTGATGAGTATGCAAAATTTAGAATTTATTGAAGTCACTTTATTA  
ATGTTCTTACTCGTATTATTGCAATTGTGTTTTTAGAAGGCAAGAAGTCTTACTTTGGCAGATAGGTT  
GTGTTCTGCTAGAGTATGGTAGTCCAAAATTAATCCCTAGCAATTAGCTTTTTAACAGAACTTTTTCA  
GCTTGGAGGACTACCAGCACAACCAGCTAGCACTTTTTTTCAGCTCATTTTTGGAATTTAAAACACCTT  
GTAGAAATGGATACTGACCAATTGAAACTCTATGAAGAGCCATTATCAAAGCTGATAAAGACACTATTTT  
CCTTTGAAGCAGAAGCTTATAGAAATATTGAACCTGTCTATTTAAATATGCTGCTGGAAAAGTCTGTGT  
CATGTTTGAAGACGGTGTGCTCATGCGGCTTAAGTCTGATTTGCTAAAAGCAGCTTTGTGCCATTTACTG  
CAGTATTTCTTAAATTTGTGCCAGCTGGGTATGAATCTGCTTTACAAGTCAGGAAGGTCTATGTGAGAA  
ATATTTGTAAAGCTTTTTGGATGTGCTTGGAAATTGAGGTAGATGCAGAGTACTTGTGGGCCACTTTTA  
TGCAGCTTTGAAAATGAAAAGTATGAAAATCATTGAGGAGATTCAATGCCAAACTCAACAGGAAAACCTC  
AGCAGTAATAGTGATGGAATATCACCCAAAAGGCGTCTCAGCTCGTCTCTAAACCTTCTAAAAGAG  
CACCAAAACAGACTGAGGAAATTAACATGTGGACATGAACCAAAAGAGCATATTATGGAGTGCAGTAA  
ACAGAAAAGCTGAATCCCTTCAGATTTCCCTTGAATACAGTGGCCTAAAGAATCCTGTTATTGAGATGTTA



[View online »](#)

GAAGGAATTGCTGTTGTCTTACAACACTGACTGCTCTGTGTACTGTTTCATTGTTCTCATCAAAAACATGAACT  
 GCCGACTTTCAAGGACTGTCAACATAAATCCAAGAAGAAACCTTCTGTAGTGATAAATTGGATGTCATT  
 GGATTTTTACACAAAAGTGCTTAAGAGCTGTAGAAGTTTGTAGAAATCTGTTTCAGAACTGGACCTGGAG  
 GCAACCATTGATAAAGGTGGTGAAAATTTATGATGCTTTGATTTATATGCAAGTAAACAGTTTCATTGAAAG  
 ATCATATCCTGGAAGATTTATGTGGTATGCTCTCACTTCCATGGATTTATCCCATTCTGATGATGGCTG  
 TTTAAAGTTGACCACATTTGCCGCTAATCTTCTAACATTAAGCTGTAGGATTTTCAGATAGCTATTCACCA  
 CAGGCACAATCAGGATGTGTGTTTCTTCTGACTGTTTTCCAAGAAGAATATTCCTTGAGTGGAGAACAG  
 CAGTTTTACAACCTGGGCCCTGCAGAGCTCCCATGAAGTAATCCGGGCTAGTTGTGTTAGTGGATTTTTAT  
 CTTATTGCAGCAGCAGAATTCTTGTAAACAGAGTCCCAAGATTCTTATAGATAAAGTCAAAGATGATTCT  
 GACATTGTCAAGAAAGAATTTGCTTCTATACTTGGTCAACTTGTCTGACTCTTCACGGCATGTTTTATC  
 TGACAAGTTCTTAAACAGAACCTTTCTCTGAACACGGACATGTGGACCTTTCTGTAGGAACTTGAAAGC  
 CACTTCTCAACATGAATGTTTCATCTTCTCAACTAAAAGCTTCTGTCTGCAAGCCATTCTTTTTCTACTG  
 AAAAAAAAAATACCTAGTCCAGTAAAACCTTGCTTTCATAGATAATCTACATCATCTTTGTAAGCATCTTG  
 ATTTTAGAGAAGATGAAACAGATGTAAGCAGTTCTTGGAACTTTATTAATTTAATGGAAGATCCAGA  
 CAAAGATGTTAGAGTGGCTTTTAGTGAAATATCAAGCACATATTGGAATCCTTGGACTCTGAAGATGGA  
 TTTATAAAGGAGCTTTTTGTCTTAAGAATGAAGGAAGCATATACACATGCCCAAATATCAAGAAATAATG  
 AGCTGAAGGATACCTTGATTCTTACAACAGGGGATATTGGAAGGGCCGAAAAGGAGATTTGGTACCATT  
 TGCACTCTTACACTTATTGCATTGTTGTTATCCAAGTCAAGTCTGTCTCTGGAGCAGCATACACAGAA  
 ATTAGAGCTCTGGTTGCAGCTAAAAGTGTAAACTGCAAAGTTTTTTTCAGCCAGTATAAGAAACCCATCT  
 GTCAGTTTTTGGTAGAATCCCTTCACTCTAGTCAGATGACAGCACTTCCGAATACTCCATGCCAGAATGC  
 TGACGTGCGAAAACAAGATGTGGCTCACCAGAGAGAAATGGCTTTAAATACGTTGTCTGAAATTGCCAAC  
 GTTTTCGACTTTCCTGATCTTAATCGTTTTCTTACTAGGACATTACAAGTTCTACTACCTGATCTTGCTG  
 CCAAAGCAAGCCCTGCAGCTTCTGCTCTCACTCGAACTTAGGAAAACAATTAATGTCAATCGTAGAGA  
 GATTTTAAATAAAACAACCTCAAATATATTTTTCTCATTGGTCTGTTCTGTTCCAAAGATGAATTAGAA  
 CGTGCCCTTCATTATCTGAAGAATGAAACAGAAATGAACTGGGGAGCCTGTTGAGACAAGATTTCCAAG  
 GATTGCATAATGAATTATTGCTGCGTATTGGAGAACAATCAACAGTTTTTAATGGTTTGTCAATACT  
 TGCCCTATTTGCATCCAGTGATGATCCATATCAGGGCCCGAGAGATATCATATCACCTGAACTGATGGCT  
 GATTATTTACAACCCAAATTTGGGGCATTGGCTTTTTTAAACATGCAGTTACTGAGCTCTAGTGTG  
 GCATTGAAGATAAGAAAATGGCCTTGAACAGTTTGTGATGCTTTGATGAAGTTAATGGGACCCAAACATGT  
 CAGTTCTGTGAGGTGAAGATGATGACCACACTGAGAAGTGGCCTTCGATTCAAGGATGATTTTCCTGAA  
 TTGTGTTGCAGAGCTTGGGACTGCTTTGTTCGCTGCCTGGATCATGCTTGTCTGGGCTCCCTTCTCAGTC  
 ATGTAATAGTAGCTTTGTTACCTCTTATACACATCCAGCCTAAAGAAACTGCAGCTATCTCCACTACCT  
 CATAATTGAAAACAGGGATGCTGTGCAAGATTTCTTTCATGAAATATATTTTTTACCTGATCATCCAGAA  
 TTAATAAAGATAAAAAGCCGTTCTCCAGGAATACAGAAAAGGAGACCTCTGAGAGCACTGATCTTCAGACAA  
 CTCTTCAGCTCTCTATGAAGGCCATTCAACATGAAAATGTGATGTTTCGATTTCATGCTCTTACAAGCTT  
 GAAGGAAACCTTGTATAAAAATCAGGAAAACCTGATAAAGTATGCAACAGACAGTGAACAGTAGAACCT  
 ATATCTCACAGTTGGTGACAGTGTCTTTGAAAGGTTGCCAAGATGCAAACCTCTCAAGCTCGGTTGCTCT  
 GTGGGGAATGTTAGGGGAATGGGGCGATAGATCCAGGTCGATTAGATTTCTCAACAACCTGAAACTCA  
 AGGAAAAGATTTACATTTGTGACTGGAGTAGAAGATTCAAGCTTGCCTATGGATTATTGATGGAGCTA  
 ACAAGAGCTTACCTTGCATGCTGATAAATAGCCGAGCTCAAGATTCAGCTGCCTATGCCATTGAGGAGT  
 TGCTTTCTATTTGACTGTAGAGAGATGGAGACCAACGGCCAGGTCACCAATTGTGGAGGAGATTTCC  
 TGAGCATGTTTCGGGAAATACTAGAACCTCATCTAAATACCAGATACAAGAGTTCTCAGAAGTCAACCGAT  
 TGGTCTGGAGTAAAGAAGCCAAATTAATTAAGTAAATGGGTAGTAACTTGCAGAATGGTCAGCATCTT  
 GGGCAGGTTATCTTATTACAAGGTTTCGACATGATCTTGGCAGTAAAATTTTACCTGCTGTAGCATTAT  
 GATGAAGCATGATTTCAAAGTGACCATCTATCTTCCACATATTCTGGTGTATGCTTACTGGGTTGT  
 AATCAAGAAGATCAGCAGGAGTTTATGCAGAAATATGGCAGTCTAAAGCATGACGATCAGCATACCA  
 TAAATACCAAGACATTGCATCTGATCTGTGCAACTCAGTACACAGACTGTGTTCTCCATGCTTGACCA  
 TCTCACACAGTGGCAAGGCACAAATTTAGGCACTGAAAGCTGAGAAATGTCCACACAGCAAAATCAAAC  
 AGAAATAAGGTAGACTCAATGGTATCTACTGTGGATTATGAAGACTATCAGAGTGAACCCGTTTTCTAG  
 ACCTCATACCCAGGATACTCTGGCAGTAGCTTCTTTTCGCTCCAAAGCATACACACGAGCTGTAATGCA  
 CTTTGAATCATTTATTACAGAAAAGAAGCAAAATATTCAGGAACATCTTGGATTTTTACAGAAATTTGAT  
 GCTGCTATGCATGAACCTGATGGAGTGGCCGAGTCAGTGCAATTAGAAAAGGCAGAACCTCTCTAAAAG

AACAGATCCTTGAACATGAAAGCCTTGGCTTGCTGAGGGATGCCACTGCTTGTATGACAGGGCTATTCA  
GCTAGAACCAGACCAGATCATTCAATATCATGGTGTAGTAAAGTCCATGTTAGGTCTTGGTCAGCTGTCT  
ACTGTTATCACTCAGGTGAATGGAGTGCATGCTAACAGGTCCGAGTGGACAGATGAATTAACACGTACA  
GAGTGGAAAGCAGCTTGGAAATGTACAGTGGGATTTGGTGGAAAATATTTGGCAGCAGATGGAAAATC  
TACAACATGGAGTGTGAGACTGGGACAGCTATTATTATCAGCCAAAAAAGAGATATCACAGCTTTTTAT  
GACTCACTGAAACTAGTGAGAGCAGAACAATTTACCTCTTTCAGCTGCAAGCTTTGAAAGAGGCTCCT  
ACCAACGAGGATATGAATATATTGTGAGATTGCACATGTTATGTGAGTTGGAGCATAGCATCAAACCACT  
TTTCCAGCATTCTCCAGGTGACAGTTCTCAAGAAGATTCTCTAAACTGGGTAGCTCGACTAGAAATGACC  
CAGAATTCCTACAGAGCCAAGGAGCCTATCCTGGCTCTCCGGAGGGCTTTACTAAGCCTCAACAAAAGAC  
CAGATTACAATGAAATGGTTGGAGAATGCTGGCTGCAGAGTGCCAGGGTAGCTAGAAAAGGCTGGTACCA  
CCAGACAGCCTACAATGCTCTCCTTAATGCAGGGGAATCAGACTCGCTGAACTGTACGTGGAAAGGGCA  
AAGTGGCTCTGGTCCAAGGTGATGTTACCAGGCACTAATTGTTCTTCAAAAAGGTGTTGAATTATGTT  
TTCCTGAAATGAAACCCACCTGAGGGTAAGAACATGTTAATCCATGGTCGAGCTATGCTACTAGTGGG  
CCGATTTATGGAAGAAACAGCTAACTTTGAAAGCAATGCAATTATGAAAAATATAAGGATGTGACC  
TGCTGCCAGAATGGGAGGATGGGCATTTTACCTTGCCAAGTACTATGACAAAATTGATGCCCATGGTCA  
CAGACAACAAAATGGAAGCAAGGTGATCTATCCGGTATATAGTTCTTCAATTTGGCAGATCTCTACA  
ATATGGAATCAGTTCATATATCAGTCAATGCCACGAATGTTAACTCTATGGCTTGATTATGGTACAAA  
GCATATGAATGGGAAAAGCTGGCCGCTCCGATCGTGTACAAATGAGGAATGATTTGGGTAATAAACA  
AGGTTATCACAGAGCATACAACTATTTAGCTCCATATCAATTTTACTGCTTTTTTCAATTTGATCTC  
TCGAATTTGTCATTCTCACGATGAAGTTTTTGTGCTTGTGATGGAATAATAGCCAAAGTATTTCTAGCC  
TATCCTCAACAAGCAATGGATGATGACAGCTGTGCAAAGTCACTTATCCCATGCGTGTGAACAGAT  
GCAAGGAAATCCTCAATAAAGCTATTCATATGAAAAATCCTTAGAGAAGTTTGTGGAGATGCAACTCG  
CCTAACAGATAAGCTTTAGAATTTGCAATAAACCGGTTGATGGAAGTAGTTCACATTAAGCATGAGC  
ACTCATTTTTAAAATGCTTAAAAAGCTGGTAGAAGAAGCAACATTTAGTGAATCCCTCATTCTCTACAAT  
CAGTCATGATACCTACACTTCCATCAATTTCTGGGTACCCATGCTAACCATGCTAGCCATGAACCATTTCC  
TGGACATTTGGCCTATATTGCAGGGTTTGTGATATGGTGGAAATTTCTTGCTTCTTTCAGAAAACAAA  
AAGATTTCTTTAAAAGGCTCAGATGGAAAGTCTACATCATGATGTGTAAGCCAAAAGATGACCTGAGAA  
AGGATTGTAGACTAATGGAATTCATTCCTTGATTAATAAGTGTGTAAGAAAAGATGACAGTCTCGTAG  
AAGAGAATTCATATTCGAACATATGCAGTATTCCACTAAATGATGAATGTGGGATTATTGAATGGGTG  
AACAACTGCTGGTTTGGAGACCTATTCTGACCAACTATATAAAGAAAAGGAGTGTATATGACAGGAA  
AAGAATTCGCCAGTGTATGCTACCAAAGTCAGCAGCTTTATCTGAAAACTCAAAGTATTCGAGAAAT  
TCTCCTGCCAGGCATCCTCCTATTTTTCATGAGTGGTTTCTGAGAACATTCCTGATCCTACATCATGG  
TACAGTAGTAGATCAGCTTACTGCCGTTCCACTGCAGTAAATGCAATGGTTGGTTATATTCTGGGCTTG  
GAGACCGTCATGGTGGAAATATTCTCTTTGATTCTTTGACTGGTGAATGCGTACATGTAGATTTCAATTG  
TCTTTTCAATAAGGGAGAAACCTTTGAAGTTCAGAAAATGTGCCATTTGCGCTGACTCATAATATGGTT  
AATGGAATGGGTCTATGGGAACAGAGGGTCTTTTTCGAAGAGCATGTGAAGTTACAATGAGGCTGATGC  
GTGATCAGCGAGAGCCTTAAATGAGTGTCTTAAAGACTTTTCTACATGATCCTCTGTGGAATGGAGTAA  
ACCAGTGAAGGGCATTCCAAGCGCCACTGAATGAACTGGAGAAGTTGTCAATGAAAAGGCCAAGACC  
CATGTTCTTGACATTGAGCAGCGACTACAAGGTGAATCAAGACTCGAAATAGAGTGACAGGACTGCCGT  
TATCTATTGAAGGACATGTGCATTACCTTATACAAGAAGCTACTGATGAAAACCTTACTATGCCAGATGTA  
TCTTGTTGACTCCATATATG

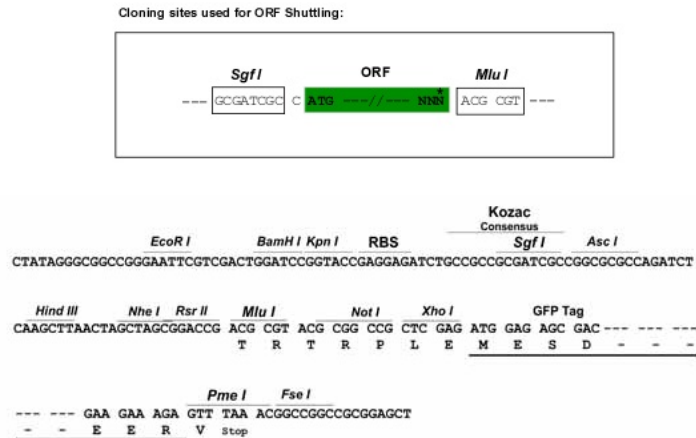
ACGCGTACGCGGCCGCTCGAG - GFP Tag - GTTTAA

**Protein Sequence:** >RG224837 representing NM\_001184  
 Red=Cloning site Green=Tags(s)

MGEHGLELASMIPALRELGSATPEEYNTVVQKPRQILCQFIDRILTDVNVVAVELVKKTDQSPTSVMLLD  
 FIQHIMKSSPLMFVNVSGSHERKGCIEFSNWIIITRLLRIAATPSCHLLHKKICEVICSLFLFKSKSPA  
 IFGVLTKELLQLFEDLVYLHRRNVMGHAVEWPVMSRFLSQLDEHMGYLSAPLQLMSMQNLEFIEVTLTLL  
 MVLTRIIAIVFFRRQELLLWQIGCVLLEYGSPKIKSLAISFLTELFQGLGPAQPASTFFSSFELELLKHL  
 VEMDTDQLKLYEPLSKLIKTLFPFEAEAYRNIEPVYLNMLEKLCVMFEDGVLMLKSDLLKAALCHLL  
 QYFLKFPVAGYESALQVRKYVVRNICKALLDVLGIEVDAEYLLGPLYAALKMESMEIEEIQCQTQQENL  
 SSNSDGI SPKRRRLSSSLNPSKRAPKQTEEEKHVDMNQKSIKLSALKQKAESLQISLEYSGLKNPVIEML  
 EGIAVVLQLTALCTVHCSHQNMNCRFTKDCQHKSKKPSVVITWMSLDFYTKVLKSCRSLLESVQKLDLE  
 ATIDKVVKIYDALIYMQVNSSFEDHILEDLCGMLSLPWIYSHSDDGCLKLTFFAANLLTSCRISDSYSP  
 QAQSRVFLTLFPRRIFLEWRTAVYNWALQSSHEVIRASCVSQGFILLQQNNSCNRVPKILIDKVKDDS  
 DIVKKEFASILGQLVCTLHGMFYLTSSLTEPFSEHGHDVLCRNLKATSQHECSSQLKASVCKPFLFLL  
 KKKIPSPVKLAFIDNLHHLCKHLDFREDETDKAVLGTLLNLMEDPKDVRVAFSGNIKHILESLDSEDG  
 FIKELFVLRMKEAYTHAQISRNNELKDTLILTTGDI GRAAKGDLVPFALLHLLHCLLSKASVSGAAYTE  
 IRALVAASKVQLQSSFSQYKPIQCFVLESLSHSSQMTALPNTPCQNADVQRKQDVAHQREMANLTLSEIAN  
 VFDFPDLNRFLTRTLQVLLPDLAAKASPAASALIRTLGKQLNVNRREILINNFKYIFSHLVCSCSKDELE  
 RALHYLKNETEIELGSLLRQDFQGLHNELLLRIGEHYQQVFNGLSILASFSSDDPYQGPDIISPELMA  
 DYLPKLLGILAFFNMQLLSSSVGIEDKMLNSLMSLMLKMGPKHVSSVRVMMTTLRTGLRFKDDFPE  
 LCCRAWDFVRCLDHACLGSLLSHVIVALLPLIHIQPKETAIFHYLIIENRDAVQDFLHEIYFLPDHPE  
 LKKIKAVLQEYRKETSESTDLQTLQLSMKAIQHENVVRIHALTSLKETLYKNQEKLIKAYATDSEVPEP  
 IISQLVTVLLKGCQDANSQARLLCGECLGELGADPGRDLDFSTTETQGGKDFTFVTGVEDSSSFAYGLLME  
 LTRAYLAYADNSRAQDAAAYAIQELL SIYDCREMETNNGPGHQLWRRFPEHVREILEPHLNTRYKSSQKSTD  
 WSGVKKPIYLSKLGSNFAEWSAWAGYLITKVRHDLASKIFTCSSIMMKHDFKVTIYLLPHILVYVLLGC  
 NQEDQQEYVAEIMAVLKHDDQHTINTQDIASDLCQLSTQTVFSMLDHLTQWARHKFQALKAKECPHSSKN  
 RNKVDMSMVSTVDYEDYQSVTRFLDLIPQDTLAVASFRSKAYTRAVMHFESFITEKKQNIQEHLGFLQKLY  
 AAMHEPDGVAGVSAIRKAEPKLEQILEHESLGLLRDATAACYDRAIQLEPDQIIHYHGCVKSMGLGQLS  
 TVITQVNGVHANRSEWDELNTYRVEAAWKLQWDLVENYLAADGKSTTWSVRLGQLLLSAKKRDITAFY  
 DSLKLVRAEQIVPLSAASFERSYQRGYEYIVRLHMLCELEHSIKPLFQHSPGDSSQEDSLNWARLEMT  
 QNSYRAKEPILALRRALLSLNKRDPDYNEMVGECLWQSARVARKAGHHQTAYNALLNAGESRLAEL YVERA  
 KWLWSKGDVHQALIVLQKGVELCFPENETPEEGKNMLIHGRAMLLVGRFMEETANFESNAIMKKYKDVTA  
 CLPEWEDGHFYLAKEYDKLMPMVTDNKMEKQGDILIRYIVLHFGRSLQYGNQFIYQSMRMLTLWLDYGTK  
 AYEWKAGRSDRVQMRNDLGKINKVITEHTNYLAPYQFLTAFSQLISRICSHSHDEVFVLMIEIAKVFLA  
 YPQQAMWMMTAVSKSSYPMRVNRCKEILNKA IHMKKSLEKLVGDATRLTDKLELLECNKPDVGSSTLSMS  
 THFKMLKKLVEEATFSEILIPLQSVMIPTLPSILGTHANHASHEPFGHWAYIAGFDDMVEILASLQKPK  
 KISLKGSDGKFIYIMMCKPKDDLKDCRLMEFNLSINKLCKDAESRRRELHIRTYAVIPLNDECGIIEWV  
 NNTAGLRPILTKLYKEKGVYMTGKELRQCMLPKSAALSEKLVKVFREFLLPRHPPIFHEWFLRTPDPTSW  
 YSSRAYCRSTAVMSMGYILGLGDRHGENILFDSL TGECVHVDNFNCLFNKGETFEVPEIVPFRLTHNMV  
 NGMGPMTGTEGLFRRACEVTMRLMRDQREPLMSVLKTFLLHDPLVEWSKPVKGHSKAPLNETGEVVNEKAKT  
 HVL DIEQRLQGVIKTRNRVTGLPLSIEGHVHYLIQEATDENLLCQMYLGWTPYM

TRTRPLE - GFP Tag - V

**Restriction Sites:** SgfI-MluI

**Cloning Scheme:**


**ACCN:** NM\_001184

**ORF Size:** 7932 bp

**OTI Disclaimer:** Due to the inherent nature of this plasmid, standard methods to replicate additional amounts of DNA in E. coli are highly likely to result in mutations and/or rearrangements. Therefore, OriGene does not guarantee the capability to replicate this plasmid DNA. Additional amounts of DNA can be purchased from OriGene with batch-specific, full-sequence verification at a reduced cost. Please contact our customer care team at [custsupport@origene.com](mailto:custsupport@origene.com) or by calling 301.340.3188 option 3 for pricing and delivery.

The molecular sequence of this clone aligns with the gene accession number as a point of reference only. However, individual transcript sequences of the same gene can differ through naturally occurring variations (e.g. polymorphisms), each with its own valid existence. This clone is substantially in agreement with the reference, but a complete review of all prevailing variants is recommended prior to use. [More info](#)

**OTI Annotation:** This clone was engineered to express the complete ORF with an expression tag. Expression varies depending on the nature of the gene.

**Components:** The ORF clone is ion-exchange column purified and shipped in a 2D barcoded Matrix tube containing 10ug of transfection-ready, dried plasmid DNA (reconstitute with 100 ul of water).

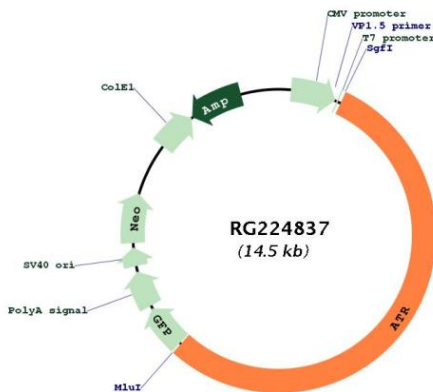
**Reconstitution Method:**

1. Centrifuge at 5,000xg for 5min.
2. Carefully open the tube and add 100ul of sterile water to dissolve the DNA.
3. Close the tube and incubate for 10 minutes at room temperature.
4. Briefly vortex the tube and then do a quick spin (less than 5000xg) to concentrate the liquid at the bottom.
5. Store the suspended plasmid at -20°C. The DNA is stable for at least one year from date of shipping when stored at -20°C.

**RefSeq:** [NM\\_001184.2](#), [NP\\_001175.1](#)

**RefSeq Size:** 8265 bp  
**RefSeq ORF:** 7935 bp  
**Locus ID:** 545  
**UniProt ID:** [Q13535](#)  
**Cytogenetics:** 3q23  
**Protein Families:** Druggable Genome, Protein Kinase  
**Protein Pathways:** Cell cycle, p53 signaling pathway  
**Gene Summary:** The protein encoded by this gene is a serine/threonine kinase and DNA damage sensor, activating cell cycle checkpoint signaling upon DNA stress. The encoded protein can phosphorylate and activate several proteins involved in the inhibition of DNA replication and mitosis, and can promote DNA repair, recombination, and apoptosis. This protein is also important for fragile site stability and centrosome duplication. Defects in this gene are a cause of Seckel syndrome 1. [provided by RefSeq, Aug 2017]

### Product images:



Circular map for RG224837