

Product datasheet for **RG224812**

NCOA1 (NM_003743) Human Tagged ORF Clone

Product data:

Product Type: Expression Plasmids
Product Name: NCOA1 (NM_003743) Human Tagged ORF Clone
Tag: TurboGFP
Symbol: NCOA1
Synonyms: bHLHe42; bHLHe74; F-SRC-1; KAT13A; RIP160; SRC1
Mammalian Cell Selection: Neomycin
Vector: pCMV6-AC-GFP (PS100010)
E. coli Selection: Ampicillin (100 ug/mL)
ORF Nucleotide Sequence: >RG224812 representing NM_003743
 Red=Cloning site Blue=ORF Green=Tags(s)

TTTTGTAATACGACTCACTATAGGGCGGCCGGAATTCGTCGACTGGATCCGGTACCGAGGAGATCTGCC
 GCC**CGATCGCC**

ATGAGTGGCCTCGGGACAGTTCATCCGACCCTGCTAACCCAGACTCACATAAGAGGAAAGGATCGCCAT
 GTGACACACTGGCATCAAGCACGAAAAGAGGCGCAGGGAGCAAGAAAATAAATATTTAGAAGAACTAGC
 TGAGTTACTGTCTGCCAACATTAGTGACATTGACAGCTTGAGTGTAAAACCAGACAAATGCAAGATTTTG
 AAGAAAACAGTCGATCAGATACAGCTAATGAAGAGAATGGAACAAGAGAAAATCAACAACCTGATGACGATG
 TACAGAAATCAGACATCTCATCAAGTAGTCAAGGAGTGATAGAAAAGGAATCCTTGGGACCTCTTCTTTT
 GGAGGCTTTGGATGGATTTTCTTTGTTGTGAAGTGTGAAGGGAGAATTGTATTTGTGTCAGAGAATGTA
 ACCAGCTACTTAGGTTACAATCAGGAGGAATTAATGAATACCAGCGTCTACAGCATACTGCACGTGGGGG
 ATCATGCAGAATTTGTGAAGAATCTGCTACCAAAATCACTAGTAAATGGAGTTTCTTGGCCTCAAGAGGC
 AACACGACGAAATAGCCATACCTTTAACTGCAGGATGCTAATTCACCTCCAGATGAGCCAGGGACCGAG
 AACCAAGAAGCTTGCCAGCGTTATGAAGTAATGCAGTGTTCCTGTCACAGCCAAAATCAATTCAAG
 AGGATGGAGAAGATTTCCAGTCATGTCTGATTTGTATTGCACGGCGATTACCTCGGCCTCCAGCTATTAC
 GGGTGTAGAATCCTTTATGACCAAGCAAGATACTACAGGTAATAATCATCTCTATTGATACTAGTTCCTG
 AGAGTCTGTCGAGAAGCTGGTTGGGAAGATTTAGTGAGGAAGTGCATTTATGCTTTTTTCCAACTCAGG
 GCAGAGAACCATCTTATGCCAGACAGCTGTTCCAAGAAGTGATGACTCGTGGCACTGCCTCCAGCCCTC
 CTATAGATTTCATATTGAATGATGGGACAATGCTTAGCGCCACACCAAGTGTAACCTTTGCTACCCTCAA
 AGTCCAGACATGCAACCTTTTCATCATGGGAATTCATATCATCGACAGGGAGCACAGTGGGCTTTCTCCTC
 AAGATGACACTAATTCTGGAATGTCAATCCCCGAGTAAATCCCTCGGTCAATCCTAGTATCTCTCCAGC
 TCATGGTGTGGCTCGTTCATCCACATTGCCACCATCCAACAGCAACATGGTATCCACCAGAATAAACCGC
 CAGCAGAGCTCAGACCTCATAGCAGCAGTCATAGTAATTCTAGCAACAGCCAAGGAAGTTTCGGATGCT
 CACCCGGAAGTCAGATTGTAGCCAATGTTGCCTTAAACCAAGGACAGGCCAGTTCACAGAGCAGTAATCC
 CTCTTAAACCTCAATAATTCTCTATGGAAGGTACAGGAATATCCCTAGCACAGTTCATGTCTCCAAG



[View online »](#)

AGACAGGTTACTTCTGGATTGGCAACAAGGCCAGGATGCCAAACAATTCCTTTCTCCTAATATTCGA
 CATTAAGCTCTCCCGTTGGCATGACAAGTAGTGCCTGTAATAATAAACCGATCTTATTCAAACATCCC
 AGTAACATCTTTACAGGGTATGAATGAAGGACCAATAACTCCGTTGGCTTCTCTGCCAGTTCTCCAGTC
 CTCAGGCAGATGAGCTCACAGAATTCACCTAGCAGATTAATATAACAACCAGCAAAGCTGAGTCCAAAG
 ATAACAAAGAGATTGCCTCAATTTAAATGAAATGATTCAATCTGACAACAGCTCTAGTGATGGCAAACC
 TCTGGATTACGGCTTCTGCATAACAATGACAGACTTTCCAGATGGAGACAGTAAACTCTCAAACCAGT
 CACAAACTAGTGCAGCTTTTGCACAACAAGTCCGAACAGCAGTTACGGCATGCTGATATAGACACAAGCT
 GCAAAGATGTCTGTCTTGCACAGGCACCTTCCAACCTCTGCCTCTGCTAACTCTTCAGGAGTTCTTGCC
 CTCTTCTCATAGCTCATTGACAGAACGGCATAAAAATTCTACACCGGCTCTTACAGGAGGGTAGCCCTCA
 GATATCACCACCTTGTCTGTGCGAGCCTGATAAAAAGGACAGTGCATCTACTTCTGTGTCAGTGACTGGAC
 AGGTACAAGGAACTCCAGTATAAACTAGAACTGGATGCTTCAAAGAAAAAGAATCAAAGACCATCA
 GCTCTACGCTATCTTTAGATAAAGATGAGAAAGATTTAAGATCAACTCCAAACCTGAGCCTGGATGAT
 GTAAGGTGAAAGTGAAAGAAAGAACAGATGGATCCATGTAATAACAACCCAAACCCCAATGACCAAAC
 CCACTCCTGAGGAAATAAACTGGAGGCCAGAGCCAGTTTACAGCTGACCTTGACCAGTTTGATCAGTT
 ACTGCCACGCTGGAGAAGGCAGCACAGTTGCCAGGCTTATGTGAGACAGACAGGATGGATGGTGGCGTC
 ACCAGTGTAAACATCAAAATCGGAGATCCTGCCAGCTTCACTTCAGTCCGCCACTGCCAGACCCACTTCCA
 GGCTAAATAGATTACCTGAGCTGGAATTGGAAGCAATTGATAACCAATTTGGACAACCAGGAACAGGCGA
 TCAGATTCATGGACAAATAACAGTGCAGCTATAAATCAGAGTAAATCAGAAGACCAGTGTATTAGC
 TCACAATTAGATGAGCTTCTGTGCCCCACAACAGTAGAAGGGAGAAATGATGAGAAGGCTCTTCTTG
 AACAGCTGGTATCCTTCTTAGTGGCAAAGATGAACTGAGCTAGCTGAACTAGACAGAGCTCTGGGAAT
 TGACAACTTGTTCAGGGGGTGGATTAGATGTATTATCAGAGAGATTTCCACCACAACAAGCAACGCCA
 CCTTTGATCATGGAAGAAAGACCAACCTTTATCCCAGCCTTACTCTTCTCCTTCTCTACTGCCAATC
 TCCCTAGCCCTTTCCAAGGCATGGTCAGGCAAAAACCTTCACTGGGGACGATGCCTGTTCAAGTAAACAC
 TCCCCGAGGTGCTTTTTACCTGGCATGGCATGCAGCCAGGCAAACTCTAAACAGACCTCCGGCTGCA
 CCTAACAGCTTCGACTTCAACTACAGCAGCGATTACAGGGACAACAGCAGTTGATACACAAAAATCGGC
 AAGCTATCTTAAACCAGTTTGCAGCAACTGCTCCTGTTGGCATCAATATGAGATCAGGCATGCAACAGCA
 AATTACACCTCAGCCACCCCTGAATGCTCAAAATGTTGGCACAACGTCAGCGGGAAGTGTACAGTCAACAG
 CACCGACAGAGGCAGCTAATACAGCAGCAAGAGCCATGCTTATGAGGCAGCAAAGCTTTGGGAACAACC
 TCCCTCCCTCATCTGGACTACCAGTTCAAATGGGAACCCCGTCTTCTCAGGGTGTCCACAGCAATT
 CCCCTATCCACAAACTATGGTACAAATCCAGGAACCCACCTGCTTCTACCAGCCGTTTTCACTA
 GCAGCAAATCCTGAAGCATCCTTGGCAAACCGCAACAGCATGGTGAGCAGAGGCATGACAGGAAACATAG
 GAGGACAGTTTGGCACTGGAATCAATCCTCAGATGCAGCAGAATGTCTTCCAGTATCCAGGAGCAGGAAT
 GGTTCCTCAAGGTGAGGCCAAGCTTTGCTCCATCTCTAAGCCCTGGGAGCTCCATGGTGCCGATGCCAATC
 CCTCCTCCTCAGAGTTCTCTGCTCCAGCAAACCTCCACCTGCCTCCGGGTATCAGTACCAGACATGAAGG
 CCTGGCAGCAAGGAGCGATAGGAAACAACAATGTGTTCAAGCTGTCCAGAACCAGCCACGCTGC
 ACAGCCAGGAGTATAACAACAATGAGCATCACCGTTTCCATGGCAGGTGGAAATACGAATGTTCAGAAC
 ATGAACCAATGATGGCCAGATGCAGATGAGCTTTGAGATGCCAGGAATGAACACTGTGTGCCCTG
 AGCAGATAAATGATCCCGCACTGAGACACAGGCCTTACTGCAACCAGCTCTCATCCACTGACCTTCT
 CAAAACAGAAGCAGATGGAACCCAGCAGGTGCAACAGGTTCAAGGTTTGTGCTGACGTCCAGTGTACAGTG
 AATCTGGTAGGCGGGACCTTACTGAACAGCCTGGTCCACTGGGAACCTCAAAGCCACGTCAGGAC
 CACAGACCCCCAGGCCAGCAGAAGAGCCTCCTTCAGCAGCTACTGACTGAA

ACGCGTACGCGGCCGCTCGAG – GFP Tag – GTTTAA

Protein Sequence: >RG224812 representing NM_003743
 Red=Cloning site Green=Tags(s)

```

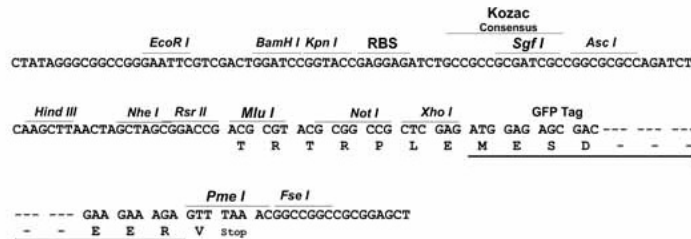
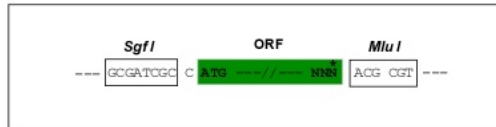
MSGLGDSSSDPANPDSHKRKGSPCDTLASSTEKRRREQENKYLEELAELLSANISDIDSLSVKPKDKCKIL
KKTVDQIQLMKRMEQEKSTDDDDVQKSDISSSSQGVIEKESLGPLLLEALDGGFFVFNCEGRIVFVSENV
TSYLGYNQEELMNTSVYSILHVGDDHAEFVKNLLPKSLVNGVWPWQEA TRRNSHTFNCRMLIHPPDEPGTE
NQEACQRVEVMQCFTVSQPKSIQEDGEDFQSCLIC IARRLRPPPAITGVESFMTKQD TTGKIISIDTSSL
RAAGRTGWEDLVRKCIYAFFQPQGREPSYARQLFQEVMTRG TASSPSYRFLNDGTMLS AHTKCKLCYPQ
SPDMQPFIMGIHIIDREHSGLS PQDDTNSGMSIPRVNPSVNP SISP AHGVARSS TLPSSNSNMVSTRINR
QQSSDLHSSSHSNSNSQGSFGCSPGSQIVANVALNQQQ ASSQSSNPSLNLNNSPMEGTGISLAQFMSPR
RQVTSGLATRPRMPNNSFPNISTLSSPVGMTSSACNNNRSYSNIPV TSLQGMNEGPNN SVGFSASSPV
LRQMSSQNPSRLNIQPAKAESKDNKEIASILNEMIQSDNSSD GKPLDSGLLHNNDR LSDGDSKYSQTS
HKL VQLL TTTAEQQLRHADIDT SCKDVL SCTGTSNSASANS SGGSCPSSHSL TERHKILHRL LQEGSPS
DITTL SVEPKKDSASTSV SVTGQVQGNSSIKLELDASKK KESKDHQLLRYLLDKDEKDLRSTPNLSLDD
VKVKVEKKEQMDPCNTNPTMKTPTPEEIKLEAQSQFTADLDQFDQLLPTLEKAAQLPGLCETDRMDGAV
TSVTIKSEILPASLQSATARPT SRLNRLPELELEAIDNQFGQP GTGDQIPWTNNTVTAINQSKSEDCQIS
SQLDELLCPPTTVEGRNDEKALLEQLVSF LSGKDETELAE LDRALGIDKLVQGGGLDVL SERFPPQATP
PLIMEERNL YSQPYSSPSTANL PSPFQGMVRQKPSLGTMPVQVTPPRGAFSPGMGMQPRQTLNRPPAA
PNQLRLQLQQRLQGQQQLIHQNRQAILNQFAATAPVGINMRSGMQQITPQPPLNAQMLAQRQRELYSQQ
HRQRQLIQQRAML MRQQSF GNNLPPSSGLPVQMGNPRLPQGAPQQFPYPPNYGTNPGTPPASTSPFSQL
AANPEASLANRNSMVS RGMTGNIGGQFGTGINPQM QNVFYQYPGAGMVPQGEANFAPSLSPGSSMVPMPI
PPPQSSLLQQTTPASGYQSPDMKAWQQGAI GNNNVFSQAVQNQPTPAQPGVYNNMSITVSMAGGNTNVQN
MNPMAQMOMSSLQMPGMNTVCPEQINDPALRHTGL YCNQLSSTDLLKTEADGTQQVQVQVQVADVQCTV
NLVGGDPYLNQPGPLGTQKPTSGPQTPQAQQKSL LQQLL TE
    
```

TRTRPLE - GFP Tag - V

Restriction Sites: SgfI-MluI

Cloning Scheme:

Cloning sites used for ORF Shutting:

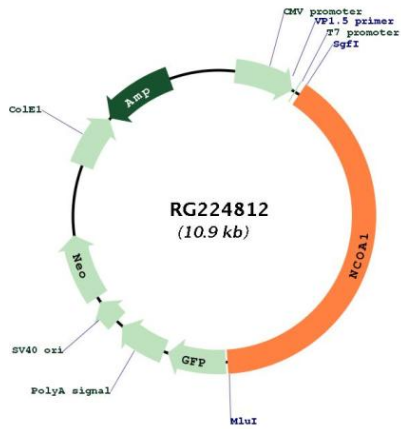


ACCN: NM_003743

ORF Size: 4323 bp

OTI Disclaimer:	The molecular sequence of this clone aligns with the gene accession number as a point of reference only. However, individual transcript sequences of the same gene can differ through naturally occurring variations (e.g. polymorphisms), each with its own valid existence. This clone is substantially in agreement with the reference, but a complete review of all prevailing variants is recommended prior to use. More info
OTI Annotation:	This clone was engineered to express the complete ORF with an expression tag. Expression varies depending on the nature of the gene.
Components:	The ORF clone is ion-exchange column purified and shipped in a 2D barcoded Matrix tube containing 10ug of transfection-ready, dried plasmid DNA (reconstitute with 100 ul of water).
Reconstitution Method:	<ol style="list-style-type: none">1. Centrifuge at 5,000xg for 5min.2. Carefully open the tube and add 100ul of sterile water to dissolve the DNA.3. Close the tube and incubate for 10 minutes at room temperature.4. Briefly vortex the tube and then do a quick spin (less than 5000xg) to concentrate the liquid at the bottom.5. Store the suspended plasmid at -20°C. The DNA is stable for at least one year from date of shipping when stored at -20°C.
RefSeq:	NM_003743.4 , NP_003734.3
RefSeq Size:	6895 bp
RefSeq ORF:	4326 bp
Locus ID:	8648
UniProt ID:	Q15788
Cytogenetics:	2p23.3
Domains:	PAS, HLH
Protein Families:	Druggable Genome, Transcription Factors
Gene Summary:	The protein encoded by this gene acts as a transcriptional coactivator for steroid and nuclear hormone receptors. It is a member of the p160/steroid receptor coactivator (SRC) family and like other family members has histone acetyltransferase activity and contains a nuclear localization signal, as well as bHLH and PAS domains. The product of this gene binds nuclear receptors directly and stimulates the transcriptional activities in a hormone-dependent fashion. Alternatively spliced transcript variants encoding different isoforms have been identified. [provided by RefSeq, Jul 2008]

Product images:



Circular map for RG224812