

Product datasheet for **RG224802**

Topoisomerase II beta (TOP2B) (NM_001068) Human Tagged ORF Clone

Product data:

Product Type:	Expression Plasmids
Product Name:	Topoisomerase II beta (TOP2B) (NM_001068) Human Tagged ORF Clone
Tag:	TurboGFP
Symbol:	TOP2B
Synonyms:	top2beta; TOPIIB
Mammalian Cell Selection:	Neomycin
Vector:	pCMV6-AC-GFP (PS100010)
E. coli Selection:	Ampicillin (100 ug/mL)
ORF Nucleotide Sequence:	>RG224802 representing NM_001068 Red=Cloning site Blue=ORF Green=Tags(s)

TTTTGTAATACGACTCACTATAGGGCGGCCGGAATTCGTCGACTGGATCCGGTACCGAGGAGATCTGCC
GCC**CGATCGCC**

ATGGCCAAGTCGGGTGGCTGCGGCGGGAGCCGGCGTGGGCGGCGGCAACGGGGCACTGACCTGGGTGA
ACAATGCTGCAAAAAAGAAGAGTCAGAACTGCCAACAAAAATGATTCTTCAAAGAAGTTGCTGTTGA
GAGAGTGTATCAGAAGAAGACACAACCTGAACACATTCTTCTCGTCCTGATACATATATTGGGTCAGTG
GAGCCATTGACGCAGTTCATGTGGGTGTATGATGAAGATGTAGGAATGAATTGCAGGGAGGTTACCTTTG
TGCCAGGTTTATACAAGATCTTTGATGAAATTTGGTTAATGCTGCTGACAATAAACAGAGGGATAAGAA
CATGACTTGTATTAAGTTTCTATTGATCCTGAATCTAACATTATAAGCATTGGAAATAATGGGAAAGGC
ATTCCAGTAGTAGAACACAAGGTAGAGAAAGTTTATGTTCTGCTTTAATTTTTGGACAGCTTTTAAACAT
CCAGTAACTATGATGATGATGAGAAAAAGTTACAGGTGGTCGTAATGGTTATGGTGCAAACTTTGTAA
TATTTTCAGTACAAAGTTTACAGTAGAAACAGCTTGCAAAGAATACAAACACAGTTTTAAGCAGACATGG
ATGAATAATATGATGAAGACTTCTGAAGCCAAATTAACATTTTGTGGTGAAGATTACACATGCATAA
CATTCCAACCAGATCTGTCCAAATTTAAGATGGAAAACTTGACAAGGATATTGTGGCCCTCATGACTAG
AAGGGCATATGATTTGGCTGGTTCGTGTAGAGGGGTCAAGGTCATGTTAATGAAAGAAATTCCTGTA
AATGGATTCGAGTTATGTAGATCTTTATGTGAAAGACAAATGGATGAACTGGGGTGGCCCTGAAAG
TTATTCATGAGCTTGCAATGAAAGATGGGATGTTTGTCTCACATTGAGTGAAAAAGGATTCAGCAAAAT
CAGCTTTGTAAATAGTATTGCAACTACAAAAGGTGGACGGCACGTGGATTATGTGGTAGATCAAGTTGTT
GGTAAACTGATTGAAGTAGTTAAGAAAAAGAACAAAGCTGGTGTATCAGTGAAACCATTTCAAGTAAAA
ACCATATATGGGTTTTTAAATTGCCTTATTGAAAATCCAACCTTTGATTCTCAGACTAAGGAAAAACAT
GACTCTGCAGCCCAAAAGTTTTGGGTCTAAATGCCAGCTGTCAGAAAAATTTTTAAAGCAGCCTCTAAT
TGTGGCATTGTAGAAAGTATCCTGAACTGGGTGAAATTTAAGGCTCAGACTCAGTGAATAAGAAGTGT
CATCAGTAAAATACAGTAAAATCAAAGGTATCCCAAACCTGGATGATGCTAATGATGCTGGTGGTAAACA
TTCCCTGGAGTGTACACTGATATTAACAGAGGGAGACTCTGCCAAATCACTGGCTGTCTGGATTAGT



[View online »](#)

GTGATTGGACGAGACAGATACGGAGTTTTTCCACTCAGGGGCAAAATCTTAATGTACGGGAAGCTTCTC
 ATAAACAGATCATGAAAATGCTGAAATAAATAATATTATTAATAAGTGGTCTACAATATAAGAAAAG
 TTACGATGATGCAGAATCTCTGAAAACCTTACGCTATGGAAGATTATGATTATGACCGATCAGGATCAA
 GATGGTTCTCACATAAAAGGCCTGCTTATTAATTTTCATCCATCACAATGGCCATCACTTTTGAAGCATG
 GTTTTCTGAAGAGTTCATTACTCCTATTGTAAGGCAAGCAAAAATAAGCAGGAACCTTCTTCTACAG
 TATTCTGAATTTGACGAATGAAAAAACATATAGAAAACCAGAAAGCCTGGAAAAAAGTACTATAAA
 GGATTGGTACTAGTACAGCTAAAGAAGCAAGGAATATTTTGGTGTATGGAAGGCATCGCATTTGT
 TTAGATATGCTGGTCTGAAGATGATGCTGCCATTACCTTGGCATTAGTAAGAAGAAGATTGATGACAG
 AAAAGAATGGTTAACAAATTTTATGGAAGACCGGAGACAGCGTAGGCTACATGGCTTACCAGAGCAATTT
 TTATATGGTACTGCAACAAAGCATTGACTTATAATGATTTTCATCAACAAGGAATTGATTCTCTTCTCAA
 ACTCAGACAATGAAAGATCTATACCATCTCTTGTGATGGCTTAAACCTGGCCAGCGGAAAAGTTTTATT
 TACCTGTTTCAAGAGGAATGATAAACGTGAAGTAAAAGTTGCCAGTTGGCTGGCTCTGTGCTGAGATG
 TCGGCTTATCATCATGGAGAACAAGCATTGATGATGACTATTGTGAATTTGGCTCAGAACTTTGTGGGAA
 GTAACAACATTAAGTCTTACGCTATTGGTCAGTTTGAAGTGGCTCATGGTGGCAAAGATGCTGC
 AAGCCCTCGTTATATTTTACAATGTTAAGCATTAGCAAGGCTACTTTTTCTGCTGTGGATGACAAC
 CTCTTAAGTTCTTTATGATGATAATCAACGTGTAGAGCCTGAGTGGTATATTCCTATAATCCCATGG
 TTTTAATAAATGGTGTGCTGAGGGCATTGGTACTGGATGGGCTTGTAAACTACCCAATATGATGCTAGGGA
 AATTGTGAACAATGTCAGACGAATGCTAGATGGCTGGATCCTCATCCCATGCTTCCAACTACAAAAAC
 TTTAAAGGCACGATCAAGAAGTGGTCAAAACCAGTATGCAGTCAGTGGTGAATATTTGTAGTGGACA
 GAAACACAGTAGAAAATTACAGAGCTTCCAGTTAGAAGTGGACACAGGTATATAAAGAACAGTTTTAGA
 ACCTATGCTAAATGGAACAGATAAAACACCAGCATTATTTCTGATTATAAAGAATATCATACTGACACA
 ACTGTGAAATTTGTGGTAAAATGACTGAAGAGAACTAGCACAAGCAGAAGCTGCTGGACTGCATAAAG
 TTTTTAACTTCAAAGTCTTACTTGTAAATTCATGGTACTTTTTGATCATATGGGATGCTGAAGAA
 ATATGAAACTGTGCAAGACATTCTGAAAGAATTTGATTTACGATTAAAGTATTACGGTTTACGTTAAG
 GAGTGGCTTGTGGGAATGTTGGGAGCAGAACTCAAAAGCTTAAACAATCAAGCCGTTTCTTTTAGAGA
 AGATACAAGGGAAAATTACTATAGAGAATAGTCAAAGAAAGATTTGATTCAAATGTTAGTCCAGAGAGG
 TTATGAATCTGACCCAGTAAAGCCTGGAAAGAAGCACAAGAAAAGGCAGCAGAAGAGGATGAAACACAA
 AACCAGCATGATGATAGTTCTCCGATTCAGGAAGTCTTTCAGGCCAGATTTTAAATATATTTTAAATA
 TGTCTCTGTGGTCTTACTAAAGAAAAGTTGAAGAAGTGAATTAACAGAGAGATGCAAAAGGGCAGAGA
 GGTCAATGATCTTAAAGAAAATCTCCTCAGATCTTTGGAAAGAGGATTTAGCGGCATTTGTTGAAGAA
 CTGGATAAAGTGAATCTCAAGAACGAGAAGATGTTCTGGCTGGAATGTCTGGAAAAGCAATTAAGGTA
 AAGTTGGCAAACCTAAGGTGAAGAACTCCAGTTGGAAGAGACAATGCCCTCACCTTATGGCAGAAGAAT
 AATTCCTGAAATTACAGCTATGAAGGCAGATGCCAGCAAAAAGTTGCTGAAGAAGAAGAAGGGTATCTT
 GATACTGCAGCAGTAAAAGTGAATTTGATGAAGAATTCAGTGGAGCACCAGTAGAAGGTGCAGGAGAAG
 AGGCATTGACTCCATCAGTTCCTATAAATAAAGGTCCCAAACCTAAGAGGGAGAAGAAGGAGCCTGGTAC
 CAGAGTGAGAAAAACCTACATCATCTGGTAAACCTAGTCAAAGAAAGTGAAGAAACGGAAATCCTTGG
 TCAGATGATGAATCCAAGTCAGAAAGTATTTGGAAGAAACAGAACCTGTGGTATTCCAAGAGATTTCTT
 TGCTTAGGAGAGCAGCAGCCGAAAGACCTAAATACACATTTGATTTCTCAGAAGAAGAGGATGATGATGC
 TGATGATGATGATGACAATAATGATTTAGAGGAATTGAAAGTTAAAGCATCTCCATAACAATGATGAT
 GGGGAAGATGAATTTGTTCTTCCAGATGGGTTAGATAAAGATGAATATACATTTTACCAGGCAAAATCAA
 AAGCCACTCCAGAAAAATCTTTCATGACAAAAAAGTCAAGATTTTGGAAATCTTCTCATTTCTTCTC
 ATATTCTCAGAAGTCAGAAGATGATTCAGCTAAATTTGACAGTAATGAAGAAGATTCTGCTTCTGTTTTT
 TCACCATCATTTGGTCTGAAACAGACAGATAAAGTTCCAAGTAAAACGGTAGCTGCTAAAAAGGGAAAAAC
 CGTCTTCCAGATACAGTCCCTAAGCCCAAGAGAGCCCCAAAACAGAAGAAAGTAGTAGAGGCTGTAAACTC
 TGACTCGGATTCAGAATTTGGCATTCCAAGAAGACTACAACACCAAAAGGTAAGGCCGAGGGGCAAG
 AAAAGGAAAGCATCTGGCTCTGAAAATGAAGGCGATTATAACCTGGCAGGAAAACATCCAAAACAACAA
 GCAAGAAACCGAAGAAGACATCTTTTATCAGGATTCAGATGTGGACATCTTCCCTCAGACTTCCCTAC
 TGAGCCACCTTCTGCCACGAACCGGTGCGGGCTAGGAAAGAAGTAAAATATTTTGCAGAGTCTGATGAA
 GAAGAAGATGATGTTGATTTTGAATGTTAAT

ACGCGTACGCGGCCGCTCGAG – GFP Tag – GTTTAA

Protein Sequence: >RG224802 representing NM_001068
 Red=Cloning site Green=Tags(s)

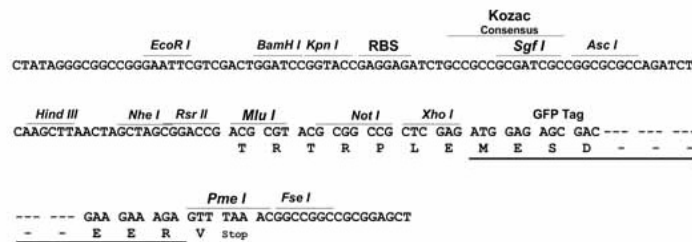
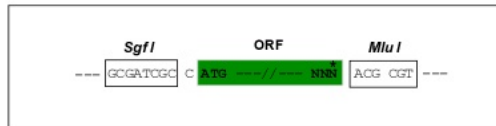
MAKSGGCGAGAGVGGNGALTWVNNAAKKEESETANKNDSSKLSVERVYQKKTQLEHILLRPDITYIGSV
 EPLTQFMWVYDEVDGMNCREVTFVPLGKIFDEILVNAADNKQRDNMTCIKVSDPESNIIISIWNNGKG
 IPVVEHKVEKVVYPALIFGQLLTSNNYDDEKKTGGRNGYGAKLCNIFSTKFTVETACKEYKHSFKQWT
 MNMMKTSEAKIKHFDGEDYTCITFPDLKFKMEKLDKDIVALMTRRAYDLAGSCRGVVMFNGKKLPV
 NGFRSYVDLYVKDKLDETGVALKVIHELANERWDVCLTLSEKGFQQISFVNSIATTKGGRHVDYVVDQVV
 GKLEIEVVKKNKAGVSVKPFQVKNHIWVFINCLINPTFDSQTKENMTLQPKSFGSKCQLSEKFFKAASN
 CGIVESILNWWKFAQTQLNKKCSSVKYSKIKGIPKLDANDAGGKHSLECTLILTEGDSAKSLAVSGLG
 VIGRDYGVFPLRGKILNVREASHKQIMENAEINNIKIIVGLQYKSYDDAESLTLRYGKIMIMTDQDQ
 DGSHIKGLLINFIHNNWPSLLKHGFLEEFITPIVKASKNKQELSFYSIPEFDEWKKHIENQAWKIKYYK
 GLGTSTAKEAKEYFADMERHRILFRYAGPEDDAITLAFSKKKIDDRKEWLTNFMEDRRQRRLHGLPEQF
 LYGATKHLTYNDFINKELILFSNSDERSIPSLVDGFKPGQRKVLFTCFKRNDKREVKVAQLAGSVAEM
 SAYHHGEQALMMTIVNLAQNFGVSNINLLQPIGQFGTRLHGGKDAASPRYIFTMLSTLARLLFPAVDDN
 LLKFLYDDNQRVEPEWYIPIIPVMLINGAEGIGTGWACKLPNYDAREIVNNVRRMLDGLDPHPMLPNYKN
 FKGTIQELGQNQYAVSGEIFVVDNRNTVEITELPVRTWTQVYKEQVLEPMLNGTDKTPALISDYKEYHTDT
 TVKVVVKMTEEKLAQAEAGLHKVFKLQTTLCNSMVLFDHMGCLKKYETVQDILKEFFDLRLSYGLRK
 EWLVGMLGAESTKLNNQARFILEIKIQGKITIEENRSKKDLIQMLVQRGYESDPVKAWKEAQEKAAEEDETQ
 NQHDDSSSDSGTPSGPDFNYILNMSLWSLTKKEVEELIKQRDAKGREVNDLKRKSPSDLWKEDLAAFVEE
 LDKVESQEREDVLAGMSGKAIKGVKPKVKKLQLEETMPSYGRRIPEITAMKADASKLLKKKKGDL
 DTAAVKVEFDEEFSGAPVEGAGEEALTPSVPINKGPKPKREKKEPGTRVRKTPTSSGKPSAKKVKKRNPW
 SDDESKSESDLEETEPVVIPRDSLLRRAAERPKYTFDFSEEEDDADDDDDNDLEELVKASPITND
 GEDEFVPSDGLDKDEYTFSPGKSKATPEKSLHDKKSQDFGNLFFSPYSQKSEDDSAKFDSNEEDSASVF
 SPSFGLKQTDKVPKTVAAKKGKPSDTPKPKRAPKQKVVAVNSDSEDFGIPKKTTPKGGKRGAK
 KRKASGSENEGDYNPGRKTSKTTSKPKKTSFDQSDVDIFPSPDFTEPPSLPRTGRARKEVKYFAESDE
 EEDDVDFAMFN

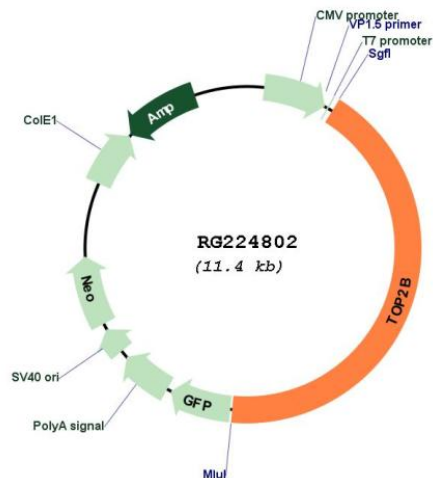
TRTRPLE - GFP Tag - V

Restriction Sites: SgfI-MluI

Cloning Scheme:

Cloning sites used for ORF Shutting:



Plasmid Map:


ACCN: NM_001068

ORF Size: 4863 bp

OTI Disclaimer: Due to the inherent nature of this plasmid, standard methods to replicate additional amounts of DNA in *E. coli* are highly likely to result in mutations and/or rearrangements. Therefore, OriGene does not guarantee the capability to replicate this plasmid DNA. Additional amounts of DNA can be purchased from OriGene with batch-specific, full-sequence verification at a reduced cost. Please contact our customer care team at custsupport@origene.com or by calling 301.340.3188 option 3 for pricing and delivery.

The molecular sequence of this clone aligns with the gene accession number as a point of reference only. However, individual transcript sequences of the same gene can differ through naturally occurring variations (e.g. polymorphisms), each with its own valid existence. This clone is substantially in agreement with the reference, but a complete review of all prevailing variants is recommended prior to use. [More info](#)

OTI Annotation: This clone was engineered to express the complete ORF with an expression tag. Expression varies depending on the nature of the gene.

Components: The ORF clone is ion-exchange column purified and shipped in a 2D barcoded Matrix tube containing 10ug of transfection-ready, dried plasmid DNA (reconstitute with 100 ul of water).

Reconstitution Method:

1. Centrifuge at 5,000xg for 5min.
2. Carefully open the tube and add 100ul of sterile water to dissolve the DNA.
3. Close the tube and incubate for 10 minutes at room temperature.
4. Briefly vortex the tube and then do a quick spin (less than 5000xg) to concentrate the liquid at the bottom.
5. Store the suspended plasmid at -20°C. The DNA is stable for at least one year from date of shipping when stored at -20°C.

RefSeq: [NM_001068.3](#), [NP_001059.2](#)

RefSeq Size: 5360 bp

RefSeq ORF: 4866 bp

Locus ID: 7155

UniProt ID: [Q02880](#)

Cytogenetics: 3p24.2

Domains: DNA_gyraseB, DNA_topoisoIV, HATPase_c

Protein Families: Druggable Genome

Gene Summary: This gene encodes a DNA topoisomerase, an enzyme that controls and alters the topologic states of DNA during transcription. This nuclear enzyme is involved in processes such as chromosome condensation, chromatid separation, and the relief of torsional stress that occurs during DNA transcription and replication. It catalyzes the transient breaking and rejoining of two strands of duplex DNA which allows the strands to pass through one another, thus altering the topology of DNA. Two forms of this enzyme exist as likely products of a gene duplication event. The gene encoding this form, beta, is localized to chromosome 3 and the alpha form is localized to chromosome 17. The gene encoding this enzyme functions as the target for several anticancer agents and a variety of mutations in this gene have been associated with the development of drug resistance. Reduced activity of this enzyme may also play a role in ataxia-telangiectasia. Alternative splicing results in multiple transcript variants. [provided by RefSeq, Aug 2016]