

Product datasheet for **RG224793**

CEMIP2 (NM_013390) Human Tagged ORF Clone

Product data:

Product Type:	Expression Plasmids
Product Name:	CEMIP2 (NM_013390) Human Tagged ORF Clone
Tag:	TurboGFP
Symbol:	CEMIP2
Synonyms:	TMEM2
Mammalian Cell Selection:	Neomycin
Vector:	pCMV6-AC-GFP (PS100010)
E. coli Selection:	Ampicillin (100 ug/mL)
ORF Nucleotide Sequence:	>RG224793 representing NM_013390 Red=Cloning site Blue=ORF Green=Tags(s)

TTTTGTAATACGACTCACTATAGGGCGGCCGGAATTCGTCGACTGGATCCGGTACCGAGGAGATCTGCC
GCC**CGATCGCC**

ATGTATGCCACTGATTCCAGGGGACACTCCCCTGCTTTCCTCCAACCTCAGAATGGAAATAGTCGTACC
CATCTGGCTATGTTCCAGGAAGGTTGCCATTGCGTCCCCCTCCTCCTCAAAGAGTCAAGCTTCAGC
CAAATTTACCTCCATCAGACGAGAAGACCGGGCAACCTTCGATTCTCACCTGAAGAACGCAAGCCAG
AGAGAAAGTCAAAGCAAAGAGACACAAAATACTTTCAATTTGTTTTGCTATTACTAGTTTCTCATTTT
TTATTGCACTTGAATCATTTTAGGAATATCCTCAAATATGCTCCAGATGAAAATTGCCAGATCAAAA
TCCTCGTCTCAGGAATTGGGATCCAGGACAAGATTCTGCAAAGCAAGTTGTTATCAAGGAGGAGATATG
CTCCGTCTGACCTCAGACGCCACCGTGCATTCTATAGTATTGAGGACTGCTTGTATTTGGGG
ACAATAAAGATGGATCCAGAAATATTACTTTGAGGACTCATTACATCCTGATCCAGGATGGTGGGGCGCT
TCATATTGGAGCAGAAAAATGCCGCTATAAATCCAAAGCGACAATTACCTTGTATGGCAAGTCAGATGAA
GGTGAAAGTATGCCAACATTTGGCAAAAAGTTTATTGGTGTGGAAGCTGGCGGGACACTGGAGTTACATG
GGGCACGGAAGGCATCGTGGACGTTGTTGGCAAGGACCCTGAATTCCTCAGGCTTGCCCTTTGGGTCCTA
TACCTTTGAAAAGGACTTTTCCCGGGCCCTCAATGTGAGGGTCATTGACCAAGACACGGCCAAAATTTTG
GAAAGTGAGAGATTTGATACCCATGAATACCGCAATGAGAGCAGGCGGCTCAGGAGTTTCTGAGATTCC
AGGATCCAGGTCGGATTGTTGCCATAGCTGTCCGGGATTAGCCGCTAAAAGTCTTTACAAGGAACCAT
CCAGATGATCCAGGAACGGTTGGGAAGTGAATGATCCAAGGACTGGGCTACAGGCAAGCTTGGGCTTTA
GTTGGTGTATTGATGGTGAAGCACTTCTTGAATGAATCCGTGAGAACTATGAAAATCATAGCAGTG
GCGGGAAGGCTCTTGCCCAAAGAGAATTTATACTGTGGATGGCCAGAAGTTCTCTGTGACAGCTTATAG
TGAATGGATTGAAGGCTTTCTCTTTCAGGATCCGGGTAGAGTTGTAGATGGAGTGAAGCTAAATTTG
CTAGATGATGTTAGTAGTTGAAACCTGGAGACCAGATTGTGGTCGAAGCACAGACTATTCCATGTACC
AAGCAGAGGAGTCACTCTTCTCCCTGTTCTGAATGCAGCCATTTTCAGGTCAAAGTCAAAGAAACCC
TCAGTTCTGCATGGGTGAGATCATAGACGGGTAGACATGAGAGCTGAGGTTGGAATCTTACCCGG



[View online »](#)

AATATTGTGATCCAAGGAGAAGTGGAGGACTCATGCTACGCAGAAAAATCAGTGCCAATTTTTTGGATTATG
ATACCTTTGGGGACACATTATGATAATGAAAAATTTACTTCAGTCCATCTTTCTTATGTGGAATTGAA
ACACATGGGTGAGCAGCAGATGGGGCGATACCCTGTTCAATTTTACCTGTGTGGTGACGTGGATTATAAA
GGAGGATACAGACATGCAACATTTGTGGACGGCCTGTCTATTCACAGCTTCTCAAGGTGCATCACTG
TGCATGGGACAAATGGCTTGCTAATAAAAAGACACCATTGGGTTTGACACACTAGGTCATTGTTTCTTTT
GGAAGATGGTATTGAACAGAGGAATACTTTGTTCCACAATCTGGGACTCCTCACCAGCCGGGTACTCTC
TGCCCCACCGATAGGAACAACCTCATGTGTACCACCATGCGAGATAAAGTGTTTGGAAATTACATTCTCG
TGCTGCTACTGACTGTATGGCTGTTTCAACTTTCTGGATTGCTCATCCCAACAATAATCTGATTAATAA
TGCAGCTGCAGGCTCACAGGATGCTGGAATATGTTATTTATTCCACAAGGAACCAACTGGGAATCCAGT
GGATTGCAGCTCTTGGCAAAACCAGAACTCACTCCATTGGGTATATTTTATAACAACAGGGTCCATTCAA
ATTTTAAGGCTGGCTTATTTATTGACAAAGGTGTCAAAACAACCAACTCTAGTGTGCTGACCCAAGGGA
ATACCTCTGTTTGGACAATAGTGAAGATTTGACCTCATCAGGATGCAAACCCGAAAAACACGTGTT
GCTGCTCTAATTGACAGGCTCATTGCTTTTAAAAATAATGATAATGGAGCTTGGGTGAGGAGGAGATA
TTATCGTTCAAAATTCAGCATTTGCAGATAATGGAATAGGACTGACCTTTGCCAGTGATGGAAGCTTCCC
AAGTGATGAAGGTTCCAGCCAAGAGGTATCTGAATCTCTCTTTGTTGGGAGAGCAGGAATTACGGCTTT
CAGGGTGGTCAGAACAAGTATGTAGGCACTGGAGGAATAGACCAGAAGCCTCGAACATTACCCAGGAACA
GGACGTTCCCAATTAGAGGCTTTAGATTTATGATGGGCCATTATCTCACAAGGAGCACTTTCAAAAA
ATATGTGCCAACTCCAGATAGGTACAGCAGTGAATTTGGCTTCCTCATGAAGAATTCCTGGCAGATAACC
CCCAGGAATAATATCTCCCTCGTGAAGTTTGGTCCACATGTCTCTCTGAATGTCTTTTTTGGAAAGCCTG
GTCCCTGGTTTGAAGATTGTGAGATGGATGGTGATAAAGAACTCCATATCCATGACATTGATGGCTCTGT
GACAGGATAACAAGGATGCTTATGTGGGAAGAATGGACAACCTGATCCGCCATCCAAGCTGTGTAAT
GTGTCTAAGTGGAAATGCAGTGATCTGCAGTGGGACCTATGCACAGGCTATGTACAGACATGGAGCACTC
AGAATCTTTCTATGACCATTACACGAGATGAGTATCCGTCCAACCTATGGTGCTCCGAGGTATTAATCA
GAAGGCTGCCTTTCCACAGTACCAGCCTGTCGTATGCTGGAGAAGGGTTATACCATCCACTGGAATGGG
CCGGCACACGGACTACATTTCTATACCTCGTCAACTTCAACAAGAATGACTGGATTGAGTTGGCCTTT
GCTATCCATCAAACACAAGTTTTCAAGTTACCTTTGGCTATTTGCAGCGCAGAATGGCTCATTATCCAA
AATCGAAGAATATGAGCCTGTGCATTCACTGGAAGAACTGCAAAGAAAGCAATCCGAGAGGAAATCTAT
TTTGACTCCAGCACGGGTTACTGTTTTGTATCTCAAAGCCAAAAGCCACAGGCATGGCCACAGTTACT
GTTTCATCTCAGGGATGTGAAAGAGTCAAGATCCAAGCAGCCACAGACTCAAAGGACATCAGTAACTGCAT
GGCCAAAGCATACCCACAGTACTACAGAAAGCCGTGAGTGGTCAAGCGGATGCCGGCCATGCTCACTGGA
CTCTGTCAAGGCTGTGGCACTCGGCAGGTGGTGTACTAGTGATCCTCATAAAAAGTTACCTCCCTGTGC
AATTCCAGTCACTGATAAAGCAGAAACCCAGCGTGGAGACCCGTCTGTTATTTCTGTCAATGGCACTGA
CTTTACCTTCCGAAGTGCAGGCTCCTCCTCCTGTTGTGGATCCGTGCAGCGTTCATTCCGCTTGACG
GAAAAACGGTTTTTCTCTTGCTGATGTGAGTGCAGTGCATTGAAGAGTATTTAAAAACAGGCATCCCTCAA
GGTCCATTGTTCTGTTGAGCACAAGAGGAGAAATAAAGCAGTTAAACATTTACACTTACTAGTACCTCT
GGGATTAGCCAAACCAGCTCATCTTTATGACAAAGGGAGTACCATATTTTGGGATTGAGTGGAACTTT
AAACCATCATGGACTAAGCTATTTACCAGTCTGCTGGACAGGCGCTTGGGGTCTTGAACAATTCATAC
CTTTGCAGCTGGACGAATATGGTTGTCCAGAGCCACCACTGTCCGAGAAGAGACCTGGAATGCTAAA
GCAAGCTTCAAAAAGCACAT

ACGCGTACGCGGCCGCTCGAG - GFP Tag - GTTTAA

Protein Sequence: >RG224793 representing NM_013390
 Red=Cloning site Green=Tags(s)

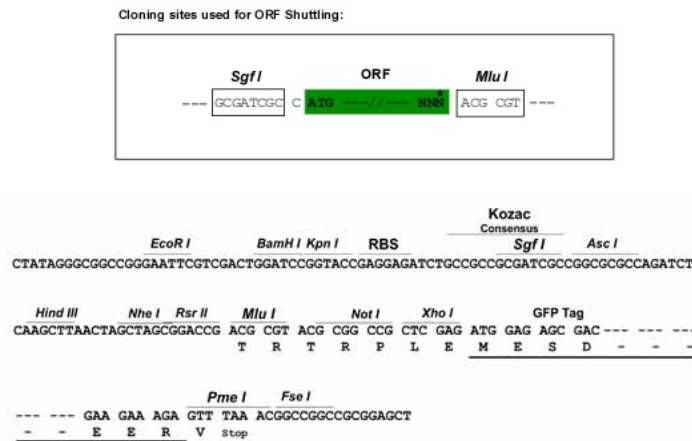
```

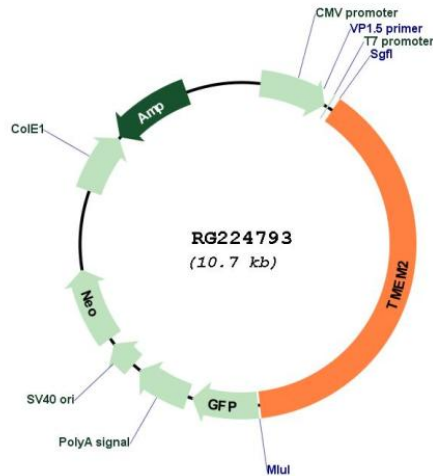
MYATDSRGHSPAFLQPQNGNSRHPSGYVPGKVVPLRPPPPKSSQASAKFTSIRREDRATFAFSPEEQAAQ
RESQKQKRHKNTFICFAITSFSFFIALAILGISSKYAPDENCPOQNPRLRNWDPGQDSAKQVVIKEGDM
LRLTSDATVHSIVIQDGLLVFGDNKDGSRNITLRTHYILIQDGGALHIGAEKCRYSKATITLYGKSDE
GESMPTFGKKFIGVEAGGTLELHGARKASWTLARTLNSSGLPFGSYTFEKDFSRGLNVRVIDQDTAKIL
ESERFDTHEYRNSRRLQEFRLFQDPGRIVAVIAGDSAASLLQGTIQMIQERLGSLEIQGLGYRQAWAL
VGVIDGGSTSCNESVRNYENHSSGGKALAQREFYTVDGQKFSVTAYSEWIEGVSLSGFRVEVVDGVKLNL
LDDVSSWKPQDQIVVASTDYSMYQAEFTLLPCSECSHFQVKVETPQFLHMGELIDGVDMAEVLGILTR
NIVIQGEVEDSCYAENQCQFFDYDTFGGHIMIMKNFTSVHLSYVELKHMGGQQMGRYPVHFHLCGDVDYK
GGYRHATFVDGLSIHHSFRCITVHGTLNLLIKDTIGFDLGHCFLEDGIEQRNRLFHNLGLLTKPGTL
LPTDRNNSMCTTMRDKVFGNYIPVATDCMAVSTFWIAHPNNNLINNAAGSQDAGIYWLFHKEPTGESS
GLQLLAKPELTPLGIFYNNRVHSNFKAGLFDKGVKTTNSSAADPREYLCLDNSARFRPHQDANPEKPRV
AALIDRLIAFKNNDNGAWVRGGDIIVQNSAFADNGIGLTFASDGSFSPDEGSSQEVSESLFVGESRNYGF
QGGQNKYVGTGGIDQKPRTLPRNRTFPIRGFQIYDGPILHTRSTFKKYVPTPDRYSSAIGFLMKNSWQIT
PRNNISLVKFGPHVSLNVFFGKPGPWFEDCEMDGDKNSIFHDIDGSVTGYKDAYVGRMDNYLIRHPSCVN
VSKWNAVICSPTYQVYVQVQVQVQVQVQVQVQVQVQVQVQVQVQVQVQVQVQVQVQVQVQVQVQVQVQV
PAPRTTFLYLNVFNKNDWIRVGLCYPSTNSFQVTFGYLQRQNGSLSKIEEYEPVHSLEELQRKQSERKQFY
FDSSTGLLFLYLKAKSHRHGHSYCSSQGCERVKIQAAATDSDKISNCMAKAYPQYRKPSPVVKRMPAMLTG
LCQCGCTRQVVFVTSDPHKSYPVQFQSPDKAETQRGDPVSVVNGTDFTFRSAGVLLLVDPSCVPFRLT
EKTVPFLADVSRIEEYLKTIIPRSIVLLSTRGEIKQLNISHLLVPLGLAKPAHLVDKGSTIFLGFSGNF
KPSWTKLFTSPAGQLGVLEQFIPQLQLEDEYGCPRATTVRRRDLELLKQASKAH
  
```

TRTRPLE - GFP Tag - V

Restriction Sites: SgfI-MluI

Cloning Scheme:



Plasmid Map:


ACCN: NM_013390

ORF Size: 4149 bp

OTI Disclaimer: The molecular sequence of this clone aligns with the gene accession number as a point of reference only. However, individual transcript sequences of the same gene can differ through naturally occurring variations (e.g. polymorphisms), each with its own valid existence. This clone is substantially in agreement with the reference, but a complete review of all prevailing variants is recommended prior to use. [More info](#)

OTI Annotation: This clone was engineered to express the complete ORF with an expression tag. Expression varies depending on the nature of the gene.

Components: The ORF clone is ion-exchange column purified and shipped in a 2D barcoded Matrix tube containing 10ug of transfection-ready, dried plasmid DNA (reconstitute with 100 ul of water).

Reconstitution Method:

1. Centrifuge at 5,000xg for 5min.
2. Carefully open the tube and add 100ul of sterile water to dissolve the DNA.
3. Close the tube and incubate for 10 minutes at room temperature.
4. Briefly vortex the tube and then do a quick spin (less than 5000xg) to concentrate the liquid at the bottom.
5. Store the suspended plasmid at -20°C. The DNA is stable for at least one year from date of shipping when stored at -20°C.

RefSeq: [NM_013390.3](#)

RefSeq Size: 6147 bp

RefSeq ORF: 4152 bp

Locus ID: 23670

UniProt ID: [Q9UHN6](#)

Cytogenetics: 9q21.13

Protein Families: Transmembrane

Gene Summary: This gene encodes a type II transmembrane protein that belongs to the interferon-induced transmembrane (IFITM) protein superfamily. The encoded protein functions as a cell surface hyaluronidase that cleaves extracellular high molecular weight hyaluronan into intermediate size fragments before internalization and degradation in the lysosome. It also has an interferon-mediated antiviral function in humans through activation of the JAK/STAT signaling pathway. The activation of this gene by transcription factor SOX4 in breast cancer cells has been shown to mediate the pathological effects of SOX4 on cancer progression. Naturally occurring mutations in this gene are associated with autosomal recessive non-syndromic hearing loss. [provided by RefSeq, Mar 2017]