

Product datasheet for **RG224789**

ATP7A (NM_000052) Human Tagged ORF Clone

Product data:

Product Type:	Expression Plasmids
Product Name:	ATP7A (NM_000052) Human Tagged ORF Clone
Tag:	TurboGFP
Symbol:	ATP7A
Synonyms:	DSMAX; MK; MNK; SMAX3
Mammalian Cell Selection:	Neomycin
Vector:	pCMV6-AC-GFP (PS100010)
E. coli Selection:	Ampicillin (100 ug/mL)
ORF Nucleotide Sequence:	>RG224789 ORF sequence, codon optimized . Due to the complexity of NM_000052, the ORF clone is codon optimized for mammalian Expression. The nucleotide sequence differs from the reference sequence, yet the amino acid sequence remains identical.

Red=Cloning site Blue=ORF Green=Tags(s)

TTTTGTAATACGACTCACTATAGGGCGGCCGGAATTCGTCGACTGGATCCGGTACCGAGGAGATCTGCC
GCC**CGGATCGCC**

ATGGATCCAAGTATGGGTGTGAATTCTGTTACCATTTCTGTTGAGGGTATGACTTGCAATTCCTGTGTTT
GGACCATTGAGCAGCAGATTGAAAAAGTGAATGGTGTGCATCACATTAAGGTATCACTGGAAGAAAAAAA
TGCAACTATTATTTATGACCCTAAACTACAGACTCCAAAGACCCTACAGGAAGCTATTGATGACATGGGC
TTTGATGCTGTTATCCATAATCCTGACCCTCTCCCTGTTTTAACTGACACCTTGTCTGACTGTTACGG
CGTCACTGACTTTGCCATGGGACCATATCCAAAGCACATTGCTGAAGACCAAGGGTGTGACAGACATTAA
AATTTACCCTCAGAAAAGAACTGTAGCAGTGACAATAATCCCTTCTATAGTGAATGCCAATCAGATAAAA
GAGCTGGTCCAGAAGCTCAGTTTAGATACTGGGACACTGGAGAAAAAGTCAGGAGCTTGTGAAGATCATA
GTATGGCTCAAGCTGGTGAAGTCTGTAAGATGAAAGTGGAAGGGATGACCTGCCATTGACTACTAG
CACTATTGAAGGAAAAATTGGGAAACTGCAAGGTGTTACGCGAATTAAGTCTCCCTGGACAATCAAGAA
GCTACTATTGTTTATCAACCTCATCTTATCTCAGTAGAGGAAATGAAAAAGCAGATTGAAGCTATGGGCT
TTCCAGCATTTGTCAAAAAGCAGCCCAAGTACCTCAAATGGGAGCTATTGATGTAGAAGCTCTAAAGAA
CACACCAGTTAAATCCTCAGAAGGGTCACAGCAAAGGAGTCCATCATATACCAATGATTCAACAGCCACT
TTCATCATTGATGGCATGCATTGTAATCATGTGTGTCAAATATTGAAAGTACTTTATCTGCACTCCAAT
ATGTAAGCAGCATAGTAGTTTCTTTAGAGAATAGGTCTGCCATTGTGAAGTATAATGCAAGCTCAGTCAC
TCCAGAATCCCTGAGAAAAGCAATAGAGGCTGTATCACCAGGGCTATATAGAGTTAGTATACAAGTGAA
GTTGAGAGTACCTCAAACCTCTCCCTCCAGCTCATCTCTCAGAAGATTCCTTTGAATGTAGTTAGCCAGC



CTCTGACACAAGAACTGTGATAAACATTGATGGCATGACTTGTAAATCCTGTGTGCAGTCTATTGAGGG
 TGTGATATCAAAAAGCCAGGTGTAAAATCCATACGAGTCCCTTGCAAATAGCAATGGGACTGTTGAG
 TATGATCCTCTACTAACCTCTCCAGAAACGTTGAGAGGAGCAATAGAAGACATGGGATTTGATGCTACCT
 TGTGACACACGAATGAGCCGTTGGTAGTAAAGCTCAGCCTTCATCGGAAATGCCGCTTTGACTTCAAC
 TAATGAATTTTACTAAAGGGATGACACCAGTTCAAGACAAGGAGGAAGGAAAGAAATTCATCTAAGTGT
 TACATACAGGTCAGTGGCATGACTTGCCTTCCGTGTAGCAAACATTGAACGGAATTTAAGGCGGGAAG
 AAGGAATATATTCTATACTTGTGGCCCTGATGGCTGGCAAGGCAGAAGTAAAGTATAATCCTGCTGTAT
 ACAACCCCAATGATAGCAGAGTTTCATCCGAGAACTTGGATTTGGAGCCACTGTGATAGAAAATGCTGAT
 GAAGGAGATGGTGTGGAACTTGTGTGAGGGGAATGACGTGTGCCTCCTGCTACATAAAAATAGAGT
 CTAGTCTCACAAAACACAGAGGGATCCTATACTGCTCCGTGGCCCTGGCAACCAACAAAGCACATATTAA
 ATATGACCCAGAAATTATTGGTCTAGAGATATTATCCATACAATTGAAAGCTTAGGTTTTGAAAGCTTCT
 TTGGTCAAGAAGGATCGGTCAGCAAGTCACTTAGATCATAAACGAGAAAATAGACAATGGAGACGGTCTT
 TTCTGTGAGTCTGTTTTCTGTATTCTGTAAATGGGGCTGATGATATATGATGGTTATGGACCACCA
 CTTTGAACCTCTCACCATAATCAAACATGAGTAAAGAAGAAAATGATCAACCTTCACTTCTATGTTT
 CTGGAGCGCCAGATTCTCCAGGATTGTCTGTTATGAATTTGCTGTCCTTTTTATTGTGTGTACCTGTAC
 AGTTTTTCGGAGGCTGGTACTTCTACATTCAGGCTTATAAAGCACTGAAGCATAAGACAGCAAATATGGA
 CGTACTGATTGTGCTGGCAACCACCATTGCATTTGCCTACTCTTTGATTATTCTTCTAGTTGCAATGTAT
 GAGAGAGCCAAAGTGAACCTTACTTTCTTTGACACACCCCTATGCTGTTTGTGTTTATTGCACTAG
 GCCGATGGCTGGAACATATAGCAAAGGGCAAAACATCAGAGGCTCTTGCAAAGTTAATTTCACTACAAGC
 TACAGAAGCAACTATTGTAACCTTGTATTCTGATAATATCCTCCTCAGTGAAGAACAAGTGGATGTGGAA
 CTTGTACAACGTGGAGATATCATTAAAGTAGTCCAGGAGGCAAAATTTCCAGTGGATGGTCGTGTTATTG
 AAGGACATTCTATGGTAGATGAGTCCCTCATCACAGGGGAGGCAATGCCTGTGGCTAAGAAACCTGGCAG
 CACAGTGATTGCTGGTTCCATTAACCAGAACGGTCACTGCTTATCTGCGCAACACATGTTGGAGCAGT
 ACAACCTTTCTCAAATTTGCAAACCTTGGAAAGAGGCACAAACATCAAAGGCTCCTATCCAGCAGTTT
 CAGACAAACTCAGTGGCTATTTTGTCTTTTATTGTTTTTGTTCATTGCCACCCTCTTGGTATGGAT
 TGTAAATGGATTCTGAATTTTGAATTTGTGAAACCTACTTTCTGGCTACAATAGAAGTATCTCCCGA
 ACAGAAACGATAATACGATTTGCTTTCCAAGCCTCTATCACAGTCTGTGATTGCGATGCTCCTGTTTAC
 TGGGACTGGCCACTCCAACCTGCTGTGATGGTGGGTACAGGAGTAGGTGCTCAAAATGGCATACTAATAAA
 AGGTGGAGAGCCATTGGAGATGGCTCATAAGGTAAGGTAGTGGTATTGATAAGACTGGAACCATTACT
 CACGGAACCCAGTGGTGAATCAAGTAAAGTTCTAACTGAAAGTAAACAGAAATATCACACCATAAAATCT
 TGGCCATTGTGGAACTGCTGAAAGTAAACAGTGAACACCCTCTAGGAACAGCCATAACCAAAATTTGCAA
 ACAGGAGCTGGACTGAAACCTTGGGTACCTGCATAGATTTCCAGGTTGTGCCAGGCTGTGGTATTAGC
 TGTAAAGTCAACCAATATTGAAGGCTTGCTACATAAGAATAACTGGAATATAGAGGACAATAATATAAAA
 ATGCATCCCTGGTTCAAATTTGATGCCAGTAATGAACAGTCATCAACTTCGTCTTCCATGATTATTGATGC
 CCAGATCTCAAATGCTCTTAATGCTCAGCAGTATAAAGTCCCTATTGGTAACCGGGAGTGGATGATTAGA
 AATGGTCTTGTCATTAATAACGATGTAATGATTTTCATGACTGAACATGAGAGAAAAGGTCGGACTGCTG
 TATTAGTAGCAGTTGATGATGAGCTGTGTGGCTTATAGCCATTGAGACACAGTGAAGCCTGAAGCAGA
 ACTGGCTATCCATATTCTGAAATCTATGGGCTTGAAGTAGTTCGATGACTGGAGACAACAGTAAAACA
 GCTAGATCTATTGCTTCTCAGGTTGGCATTACTAAGGTGTTTGTGAAAGTCTACCTTCTACAAGGTTG
 CTAAAGTGAAGCAACTTCAAGAGGAGGGAAACGGGTAGCAATGGTGGGAGATGGAATCAATGACTCCCC
 AGCTCTGGCAATGGCTAATGTGGGAATTGCTATTGGCACAGGCACAGATGTAGCCATTGAAGCAGCTGAT
 GTGGTTTTGATAAGGAATGATCTTCTGGATGTAGTGGCAAGTATTGACTTATCAAGAGAGACAGTCAAGA
 GGATTCGGATAAAATTTGCTTTTGTCTAATTTAATCTGGTTGGAAATCCCATAGCTGCTGGAGTTTT
 TATGCCATTGGTTTGGTTTTGCAGCCCTGGATGGGATCTGCAGCAATGGCTGCTTCTGTTTCTGTA
 GTACTTTCTTCTCTTCTTAACTTTACAGGAAACCAACTTACGAGAGTTATGAACTGCCTGCCCGGA
 GCCAGATAGGACAGAAGAGTCTTCAGAAATCAGCGTTTATGTTGAATAGATGATCACTCAAGGAATTC
 TCCTAAACTGGGTTTGTGGACCGGATTGTTAATTATAGCAGAGCCTCTATAAACTCACTACTGTCTGAT
 AAACGCTCCCTAAACAGTGTGTTACCAGTGAACCTGACAAGCACTCACTCCTGGTGGGAGACTTCAGGG
 AAGATGATGACTGCATTA

ACGCGTACGCGGCCGCTCGAG - GFP Tag - GTTTAA

Protein Sequence: >RG224789 representing NM_000052
 Red=Cloning site Green=Tags(s)

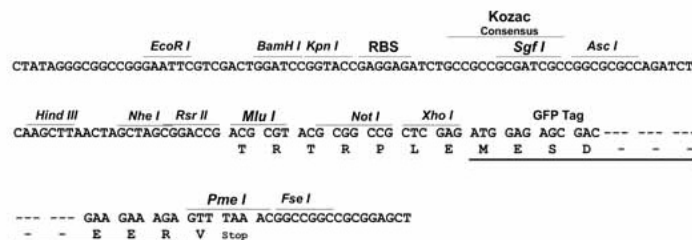
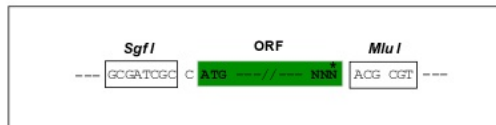
MDPSMGVNSVTISVEGMCNCSVWTIEQQIGKVNQVHHIKVSLEEKNATIIYDPKLTQPKTLQEAIDDMG
 FDAVIHNPDPPLVLTDTLFLTVTASLTLPWDHIQSTLLKTKGVTDIKIYPQKRTVAVTIIIPSIVNANQIK
 ELVPELSLDTGTLEKKSACEDHSMQAAGEVVLKMKVEGMCCHSCTSTIEGKIGKLGQVQRIKVSLDNQE
 ATIVYQPHLISVEEMKKQIEAMGFPAFVKKQPKYLLKGAIDVERLKNTPVKSSEGSQQRSPSYTNDSTAT
 FIIDGMHCKSCVSNIESTLSALQYVSSIVVSLNRSIVKYNASSVTPESLRKAIEAVSPGLYRVSITSE
 VESTSNPSSSSSLQKIPLNVVSQPLTQETVINIDGMTCNCSVQSIEGVISKKPGVKSIKRVSLANSNGTVE
 YDPLLTSPETLRGAIEDMGFDATLSDTNEPLVVIQAQPSSEMPLLTSTNEFYTKGMPVQDKEEGKNSKC
 YIQVTGMTASCVANIERNLREEGIYSILVALMAGKAEVRYNPAVIQPPMIAEFIRELFGFATVIENAD
 EGDGVLELVVRGMCASCVHKIESSLTKHRGILYCSVALATNKAHIKYDPEIIGPRDIHTIESLGFAS
 LVKKDRSASHLDHKREIRQWRRSFLVSLFFCIPVMGLMIYMMVMDHFFATLHHNQNSKEEMINLHSSMF
 LERQILPGLSVMNLLSFLLCVPVQFFGGWYFYIQAAYKALKHKTANMDVLIVLATTIAFAYSLIILLVAMY
 ERAKVNPIITFFDTPPMLFVFIALGRWLEHIAKGTSEALAKLISLQATEATIVTLSDSNILLSEEQVDVE
 LVQRGDIKVVPGGKFPVDGRVIEGHSMVDESLITGEAMPVAKKPGSTVIAGSINQNGSLICATHVGAD
 TTLSQIVKLVVEEAQTSKAPIQQFADKLSGYFVPFIVFVSIATLLVWIVIGFLNFEIVETYPGYNRSISR
 TETIIRFAFQASITVLCIACPCSLGLATPTAVMVGTVGGAQNGILIKGGEPLMAHKVYVVFDKGTGIT
 HGTPVVNQVKVLTESNRISHHKILAIIVGTAESNSEHPLGTAITKYCKQELDTETLGTCTIDFQVVPGCCIS
 CKVTNIEGLLHKNNWNIEDNNIKNASLVQIDASNEQSSTSSSMIDAQISNALNAQQYKVLIGNREWMIR
 NGLVINNDVDFMTEHERKGRATVAVVDELCLGLIAIADTVKPEAELAIHILKSMGLEVLMTGDNSKT
 ARSIASQVGITKVF AEVLP SHK VAKVKQLQE EGKRVAMVGDGINDSPALAMANVGIAGTGTDV AIEAAD
 VVLIRNDLLDVASIDL SRETVKRIRINFV FAL IYNLVGPIAAGVFMPIGLVLQPMGSAAMAASSVSV
 VLSLFLKLYRKPYESYELPARSQIGQKSPSEISVHVIGIDDTSRNSPKLGLLDRIVNYSRASINSLSD
 KRSLNSVVTSEPKHSLLVGDFREDDTAL

TRTRPLE - GFP Tag - V

Restriction Sites: SgfI-MluI

Cloning Scheme:

Cloning sites used for ORF Shutting:

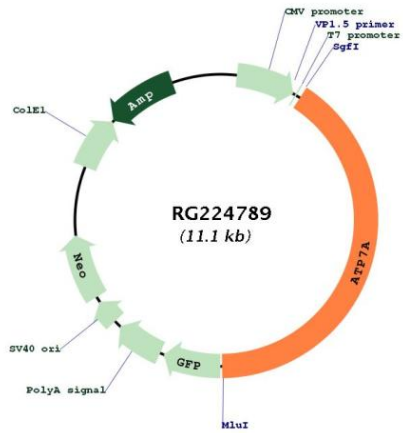


ACCN: NM_000052

ORF Size: 4500 bp

OTI Disclaimer:	<p>Due to the inherent nature of this plasmid, standard methods to replicate additional amounts of DNA in E. coli are highly likely to result in mutations and/or rearrangements. Therefore, OriGene does not guarantee the capability to replicate this plasmid DNA. Additional amounts of DNA can be purchased from OriGene with batch-specific, full-sequence verification at a reduced cost. Please contact our customer care team at custsupport@origene.com or by calling 301.340.3188 option 3 for pricing and delivery.</p> <p>The molecular sequence of this clone aligns with the gene accession number as a point of reference only. However, individual transcript sequences of the same gene can differ through naturally occurring variations (e.g. polymorphisms), each with its own valid existence. This clone is substantially in agreement with the reference, but a complete review of all prevailing variants is recommended prior to use. More info</p>
OTI Annotation:	<p>This clone was engineered to express the complete ORF with an expression tag. Expression varies depending on the nature of the gene.</p>
Components:	<p>The ORF clone is ion-exchange column purified and shipped in a 2D barcoded Matrix tube containing 10ug of transfection-ready, dried plasmid DNA (reconstitute with 100 ul of water).</p>
Reconstitution Method:	<ol style="list-style-type: none">1. Centrifuge at 5,000xg for 5min.2. Carefully open the tube and add 100ul of sterile water to dissolve the DNA.3. Close the tube and incubate for 10 minutes at room temperature.4. Briefly vortex the tube and then do a quick spin (less than 5000xg) to concentrate the liquid at the bottom.5. Store the suspended plasmid at -20°C. The DNA is stable for at least one year from date of shipping when stored at -20°C.
RefSeq:	NM_000052.5
RefSeq Size:	8492 bp
RefSeq ORF:	4503 bp
Locus ID:	538
UniProt ID:	Q04656
Cytogenetics:	Xq21.1
Domains:	E1-E2_ATPase, Hydrolase, HMA
Protein Families:	Druggable Genome, Transmembrane
Gene Summary:	<p>This gene encodes a transmembrane protein that functions in copper transport across membranes. This protein is localized to the trans Golgi network, where it is predicted to supply copper to copper-dependent enzymes in the secretory pathway. It relocates to the plasma membrane under conditions of elevated extracellular copper, and functions in the efflux of copper from cells. Mutations in this gene are associated with Menkes disease, X-linked distal spinal muscular atrophy, and occipital horn syndrome. Alternatively-spliced transcript variants have been observed. [provided by RefSeq, Aug 2013]</p>

Product images:



Circular map for RG224789