

## Product datasheet for **RG224784**

### IL36 gamma (IL36G) (NM\_019618) Human Tagged ORF Clone

#### Product data:

**Product Type:** Expression Plasmids  
**Product Name:** IL36 gamma (IL36G) (NM\_019618) Human Tagged ORF Clone  
**Tag:** TurboGFP  
**Symbol:** IL36 gamma  
**Synonyms:** IL-1F9; IL-1H1; IL-1RP2; IL1E; IL1F9; IL1H1; IL1RP2  
**Mammalian Cell Selection:** Neomycin  
**Vector:** pCMV6-AC-GFP (PS100010)  
**E. coli Selection:** Ampicillin (100 ug/mL)  
**ORF Nucleotide Sequence:** >RG224784 representing NM\_019618  
 Red=Cloning site Blue=ORF Green=Tags(s)

TTTTGTAATACGACTCACTATAGGGCGGCCGGAATTCGTCGACTGGATCCGGTACCGAGGAGATCTGCC  
 GCC**CGATCGCC**

ATGAGAGGCACTCCAGGAGACGCTGATGGTGGAGGAAGGGCCGTCTATCAATCAATGTGTAACCTATTA  
 CTGGGACTATTAATGATTTGAATCAGCAAGTGTGGACCCCTCAGGGTCAGAACCTTGTGGCAGTTCCACG  
 AAGTGACAGTGTGACCCAGTCACTGTTGCTGTTATCACATGCAAGTATCCAGAGGCTCTTGAGCAAGGC  
 AGAGGGGATCCCATTTATTTGGGAATCCAGAATCCAGAAATGTGTTTGTATTGTGAGAAGGTTGGAGAAC  
 AGCCACATTGCAGCTAAAAGAGCAGAAGATCATGGATCTGTATGGCCAACCCGAGCCCGTAAACCCCTT  
 CCTTTTCTACCGTGCCAAGACTGGTAGGACCTCCACCCTTGAGTCTGTGGCCTTCCCGGACTGGTTCATT  
 GCCTCCTCAAGAGAGACCAGCCATCATTCTGACTTCAGAACTTGGGAAGTCATACAACACTGCCTTTG  
 AATTAATATAAATGAC

**ACGCGT**ACGCGGCCGCTCGAG - GFP Tag - GTTTAA

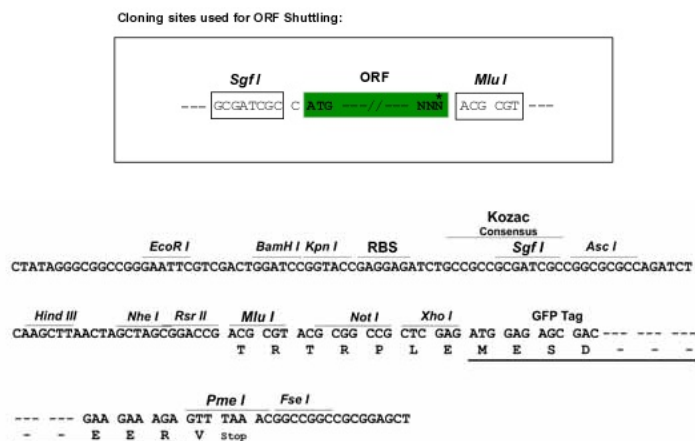
**Protein Sequence:** >RG224784 representing NM\_019618  
 Red=Cloning site Green=Tags(s)  
 MRGTPGDADGGGRAVYQSMCKPITGTINDLNQQVWTLQGQNLVAVPRSDSVTPVTVAVITCKYPEALEQG  
 RGDPIYLGIQNPEMCLYCEKVGEQPTLQLKEQKIMDLYGQPEPVKPFIFYRAKTGRSTLESVAFDPDFWI  
 ASSKRDPPIILTSELGKSYNTAFELNIND

**TRTRPLE** - GFP Tag - V

**Restriction Sites:** SgfI-MluI



[View online »](#)

**Cloning Scheme:**


**ACCN:** NM\_019618

**ORF Size:** 507 bp

**OTI Disclaimer:** The molecular sequence of this clone aligns with the gene accession number as a point of reference only. However, individual transcript sequences of the same gene can differ through naturally occurring variations (e.g. polymorphisms), each with its own valid existence. This clone is substantially in agreement with the reference, but a complete review of all prevailing variants is recommended prior to use. [More info](#)

**OTI Annotation:** This clone was engineered to express the complete ORF with an expression tag. Expression varies depending on the nature of the gene.

**Components:** The ORF clone is ion-exchange column purified and shipped in a 2D barcoded Matrix tube containing 10ug of transfection-ready, dried plasmid DNA (reconstitute with 100 ul of water).

**Reconstitution Method:**

1. Centrifuge at 5,000xg for 5min.
2. Carefully open the tube and add 100ul of sterile water to dissolve the DNA.
3. Close the tube and incubate for 10 minutes at room temperature.
4. Briefly vortex the tube and then do a quick spin (less than 5000xg) to concentrate the liquid at the bottom.
5. Store the suspended plasmid at -20°C. The DNA is stable for at least one year from date of shipping when stored at -20°C.

**RefSeq:** [NM\\_019618.4](#)

**RefSeq Size:** 1180 bp

**RefSeq ORF:** 510 bp

**Locus ID:** 56300

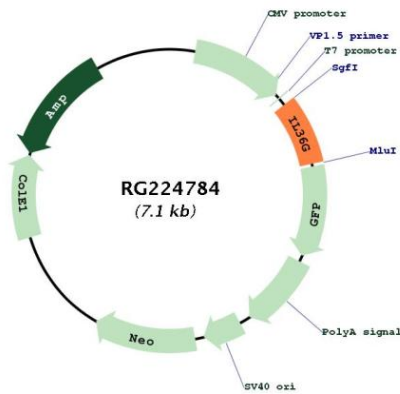
**UniProt ID:** [Q9NZH8](#)

**Cytogenetics:** 2q14.1

**Protein Families:** Druggable Genome, Secreted Protein

**Gene Summary:** The protein encoded by this gene is a member of the interleukin 1 cytokine family. The activity of this cytokine is mediated by interleukin 1 receptor-like 2 (IL1RL2/IL1R-rp2), and is specifically inhibited by interleukin 1 family, member 5 (IL1F5/IL-1 delta). Interferon-gamma, tumor necrosis factor-alpha and interleukin 1, beta (IL1B) are reported to stimulate the expression of this cytokine in keratinocytes. The expression of this cytokine in keratinocytes can also be induced by a contact hypersensitivity reaction or herpes simplex virus infection. This gene and eight other interleukin 1 family genes form a cytokine gene cluster on chromosome 2. [provided by RefSeq, May 2019]

**Product images:**



Circular map for RG224784