

Product datasheet for **RG224763**

METTL23 (NM_001080510) Human Tagged ORF Clone

Product data:

Product Type:	Expression Plasmids
Product Name:	METTL23 (NM_001080510) Human Tagged ORF Clone
Tag:	TurboGFP
Symbol:	METTL23
Synonyms:	C17orf95; MRT44
Mammalian Cell Selection:	Neomycin
Vector:	pCMV6-AC-GFP (PS100010)
E. coli Selection:	Ampicillin (100 ug/mL)
Protein Sequence:	>RG224763 representing NM_001080510 Red=Cloning site Green=Tags(s)

MLGRSRRRLRHRPAPPRPSPALPLCPSLPVAPAARCQFCACATATWPAASRSRSLAARSLPRSPARPGPN
DALLGEHDFRGQGVRAQRFRFSEEPGPGADGAVLEVHVPQIGAGVSLPGILAAKCGAEVILSDSSELPHC
LEVCRQSCQMNNLPHLQVVGLTWGHISWDLALPPQDIILASDVFFEPEDFEDILATIYFLMHKNPKVQL
WSTYQVRRQC

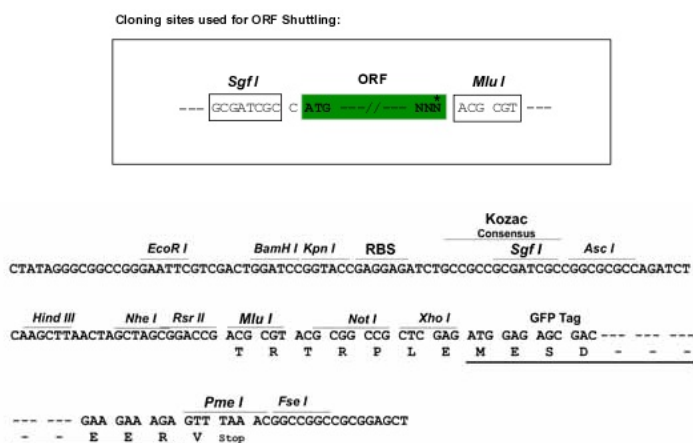
TRTRPLE - GFP Tag - V

Restriction Sites: Sgfl-MluI



[View online »](#)

Cloning Scheme:



ACCN: NM_001080510

ORF Size: 660 bp

OTI Disclaimer: The molecular sequence of this clone aligns with the gene accession number as a point of reference only. However, individual transcript sequences of the same gene can differ through naturally occurring variations (e.g. polymorphisms), each with its own valid existence. This clone is substantially in agreement with the reference, but a complete review of all prevailing variants is recommended prior to use. [More info](#)

OTI Annotation: This clone was engineered to express the complete ORF with an expression tag. Expression varies depending on the nature of the gene.

Components: The ORF clone is ion-exchange column purified and shipped in a 2D barcoded Matrix tube containing 10ug of transfection-ready, dried plasmid DNA (reconstitute with 100 ul of water).

Reconstitution Method:

1. Centrifuge at 5,000xg for 5min.
2. Carefully open the tube and add 100ul of sterile water to dissolve the DNA.
3. Close the tube and incubate for 10 minutes at room temperature.
4. Briefly vortex the tube and then do a quick spin (less than 5000xg) to concentrate the liquid at the bottom.
5. Store the suspended plasmid at -20°C. The DNA is stable for at least one year from date of shipping when stored at -20°C.

RefSeq: [NM_001080510.1](#)

RefSeq Size: 1025 bp

RefSeq ORF: 573 bp

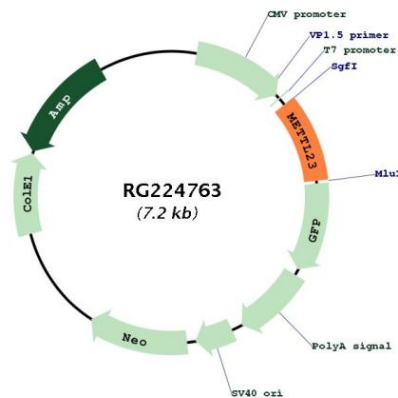
Locus ID: 124512

UniProt ID: [Q86XA0](#)

Cytogenetics: 17q25.1

Gene Summary: The protein encoded by this gene functions as a transcription factor regulator in the transcriptional pathway for human cognition. It is a partner of the alpha subunit of the GA-binding protein transcription factor. Mutations in this gene cause mild autosomal recessive intellectual disability. Alternative splicing results in multiple transcript variants. [provided by RefSeq, Nov 2014]

Product images:



Circular map for RG224763