

## Product datasheet for **RG224738**

### TRHDE (NM\_013381) Human Tagged ORF Clone

#### Product data:

Product Type:	Expression Plasmids
Product Name:	TRHDE (NM_013381) Human Tagged ORF Clone
Tag:	TurboGFP
Symbol:	TRHDE
Synonyms:	PAP-II; PGPEP2; TRH-DE
Mammalian Cell Selection:	Neomycin
Vector:	pCMV6-AC-GFP (PS100010)
E. coli Selection:	Ampicillin (100 ug/mL)
ORF Nucleotide Sequence:	>RG224738 representing NM_013381 Red=Cloning site Blue=ORF Green=Tags(s)

TTTTGTAATACGACTCACTATAGGGCGGCCGGAATTCGTCGACTGGATCCGGTACCGAGGAGATCTGCC  
GCC**CGATCGCC**

ATGGGGGAAGACGACGCCGCGCTTCGGGCTGGCAGCAGGGGGCTCTCCGACCCGTGGGCAGACTCAGTGG  
GAGTGGCACCACCGAGCGCCACATCGCCGTACACAAGCGGCTTGTGCTGGCCTTCGCTGTGTC  
CCTCGTGGCATTGCTCGCGGTACAATGCTCGCTGTGCTGCTCAGCCTGCGCTTCGACGAGTGGGGGGC  
AGTGCCACGCCAGGCGCCGACGGTGGCCCTCAGGCTTTCGGAGCGCGCGCAACGGGAGCCTCCCTG  
GATCGGCCGGCGCAACCACCACGAGGGGGGACTCCTGGCAGCCCAGGCGGGTGGGGTGGCCAGTCC  
GGGACCACGTCGCCACGCCGCTCGGAGGAGGAGCGGGAGCCGTGGGAGCCGTGGACGAGCTGCGC  
CTGTCCGGCCACCTGAAGCCGCTGCACTACAATCTGATGCTCACCGCCTTCATGGAGAATTCACCTTCT  
CCGGGGAGGTCAACGTGGAGATCGCGTGGCGAACGCCACCCGCTACGTAGTGTGCACGCTTCCCGAGT  
GGCGGTGGAGAAAGTGCAGCTGGCCGAGGACCGGGCGTTCGGGGCTGTCCCTGTAGCCGGTTTTTTCCTC  
TACCCGAAACCCAGGTCTTAGTGGTGGTGTGAATAGGACACTGGACGCGCAGAGGAATTACAATCTGA  
AGATTATCTACAACGCGCTCATCGAGAATGAGCTCCTGGGCTTCTCCGAGCTCCTATGTGCTCCACGG  
GGAGAGAAGATTCCTTGGTGTACTCAGTTTTCGCCTACACATGCCAGAAAGGCATTTCCCTGTTTTGAT  
GAGCCAATCTACAAGGCTACTTTCAAAATCAGCATCAAGCATCAAGCAACCTATTTATCTTATCTAATA  
TGCCAGTGGAAACTTCCGTGTTGAGGAAGATGGATGGGTACGGATCACTTTTCACAGACCCCTCTCAT  
GTCCACATATTATTTAGCCTGGGCAATTTGCAACTTCACATACAGAGAACTACCACCAAGAGTGGGGTT  
GTAGTACGATTATATGCAAGACCTGATGCTATCAGAAGAGGATCCGGGGACTATGCTCTCCATATAACAA  
AGAGATTAATAGAATTTTATGAAGACTACTTTAAAGTGCCTATTCCTTGCCAAAAGTAGATCTTTTAGC  
TGTGCCTAAGCATCCGTATGCTGCTATGGAGAAGTGGGGACTAAGTATTTTTGTGGAACAAAGAATACTG  
CTGGATCCAGTGTTCATCTATTTCTATTTGCTGGATGTCACCATGGTCATTGTTTCATGAGATATGTC  
ACCAAGTGGTTTGGTACCTGTGACGCTGTGTGGTGGGAAGACGTGTGGCTGAAGGAAGGGTTTGTCTCA  
CTACTTTGAATTTGTTGTAACAGACTACCTCTATCCTGGCTGGAACATGGAAGCAGAGGTTTCTGACC



[View online >](#)

GATGTTCTGCATGAAGTGATGCTGCTGGACGGTTTGGCCAGTCCCATCCAGTATCACAGGAAGTCTGC  
 AGGCAACAGATATTGACAGGGTGTTTGACTGGATCGCATATAAAAAGGGTGTGCTTTAATAAGAATGCT  
 GGCTAATTTTATGGGCCATTTCAGTTTTCCAGAGGGGTTTGAAGATTATTAACCATTTCATAAGTATGGT  
 AATGCAGCCAGAAATGATCTCTGGAATACATTATCGGAGGCTTTAAAAAGAAATGGGAAATATGTAATA  
 TACAAGAAGTAAATGGATCAGTGGACACTCCAGATGGGTTATCCTGTTATCACCATCTTGGGAAACACAAC  
 AGCAGAAAAAGAAATAAATTACCCAACAGCATTTTATCTATGATATCAGTGCTAAAACAAAGCACTT  
 AAACCTCAGAATAACAGTTACCTGTGGCAGATCCATTAACATTTGTGGTAGGAAATAGAAGCCATGTGT  
 CTTCAGAAGCAATTATTTGGGTGTCTAACAAATCAGAGCACCACAGAATAACTTATTTGGACAAAGGAAG  
 CTGGCTGCTGGGGAACATCAATCAAAGTGGCTATTTTAGAGTCAACTATGACCTAAGGAAGTGGAGATTA  
 TTAATTGATCAATTAATCCGGAATCATGAGGTTCTTTCTGTCAGTAACCGAGCGGGCTTGATCGATGATG  
 CCTTCAGCCTAGCCAGGGCTGGCTATTTGCCTCAGAATATTCCTCTGGAGATTATCAGATACCTGTCTGA  
 GGAGAAGGATTTTCTTCTTGGCATGCTGCCAGCCGAGCTCTTTATCCTCTAGATAAATTACTGGACCGC  
 ATGGAAAACACAACATTTTCAATGAATATATTTAAAGCAAGTTGCAACAACATATATCAAGCTGGGT  
 GGCCGAAAAATAATTTAATGGATCTCTTGTTCAGCATCCTACCAACATGAAGAACTACGTAGAGAAGT  
 TATAATGCTGGCCTGCAGTTTTGGCAACAAGCACTGTCACCAACAGGCATCAACACTTATTTAGATTGG  
 ATTTCCAGCAACAGGAACAGAATACCACTAAATGTTAGAGACATCGTATACTGTACAGGAGTGTCACTAC  
 TGGATGAGGATGTCTGGGAATTCATATGGATGAAATCCATTCCACCACAGCAGTTTCTGAGAAGAAAAAT  
 ATTATTGGAAGCCTTAACCTGTCAGTGTGACAGGAATTTATTAACAGGCTTCTAAATCTGTCACTGAAT  
 TCTGAGGTGGTGTGGATCAAGATGCAATTGATGTCATAATCCATGTAGCTCGAAATCCACATGGTCCGAG  
 ACCTTGCTGGAAGTTTTTCAGGGATAAATGGAAGATATAAATACCAGGTATGGAGAAGCATTGTTTAT  
 GAATCCAAACTCATCAGTGGTGTACAGAATTTCTTAATACTGAAGGTGAACTCAAAGAGCTCAAGAAC  
 TTCATGAAAAACTATGATGGGGTAGCTGCTGCTCTTTCTCACGAGCTGTGGAAGTGTGCAAGCCAATG  
 TGGCTGGAAAAATGCTTTACCAAGACGAGCTTTTCCAATGGTTAGGAAAAGCTCTAAGACAC

ACGCGTACGCGGCCGCTCGAG - GFP Tag - GTTTAA

**Protein Sequence:**

>RG224738 representing NM\_013381  
 Red=Cloning site Green=Tags(s)

MGEDDAALRAGSRGLSDPWADSVGVRPRTTERHIAVHKRLVLAFAVSLVALLAVTMLAVLLSLRFDECGA  
 SATPGADGGPSGFPERGGNGSLPGSARRNHAGGDSWQPEAGGVASPGTTSAQPPSEEEEPWEPWTQLR  
 LSGHLKPLHYNMLTAFMENFTFSGEVNVEIACRNATRYVVLHASRVAVEKVQLAEDRAFVAVPVAGFFL  
 YPQTQVLVVVLRNRLDAQRNYNLKIIYNALIENELGGFRSSYVLHGERRFLGVTQFSPHARKAFPCFD  
 EPIYKATFKISIKHQATYLSLNNMPVETSVFEEDGWVTDHFSQTPLMSTYYLAWAICNFTYRETTTKSGV  
 VVRLYARPDAIRRGSDYALHITKRLIEFYEDYFKVPYSLPKLDLLAVPKHPYAAMENWGLSIFVEQRIL  
 LDPSVSSISYLLDVTMIVHEICHQWFGDLVTPVWVEDVWLKEGFAHYFEFVGTDYLYPGWNMEKQRFLT  
 DVLHEVMLLDGLASSHPVSQEVLQATDIDRVFDWIAAYKGAALIRMLANFMGHSVFORGLQDYLTIHKYG  
 NAARNDLWNTLSEALKRNGKYVNIQEVMDQWTLQMGYPVITILGNTTAENRIIITQQHFYDYSAKTKAL  
 KLQNNSYLWQIPLTIVVGNRSHVSSEAIWVSNKSEHHRITYLDKGSWLLGNINQTYFRVNYDLRNWRL  
 LIDQLIRNHEVLSVSNRAGLIDDAFSLARAGYLPQNIPLIIRYLSEEKDFLPWHAASRALYPLDKLLDR  
 MENYNIFNEYILKQVATYIKLWPKNNFNGSLVQASYQHEELRREVIMLACSFNGKHCHQASTLISDW  
 ISSNRNRIPLNVRDIVYCTGVSLLEDVWEFIWMKFHSTAVSEKKILLEALTCSDDRNLLNRLNLSLN  
 SEVVLDQDAIDVIIHVARNPHGRDLAWKFFRDKWKILNTRYGEALFMNSKLSIGVTEFLNTEGELKELKN  
 FMKNYDGVAAASFRAVETVEANVRWKMLYQDELFWLQKALRH

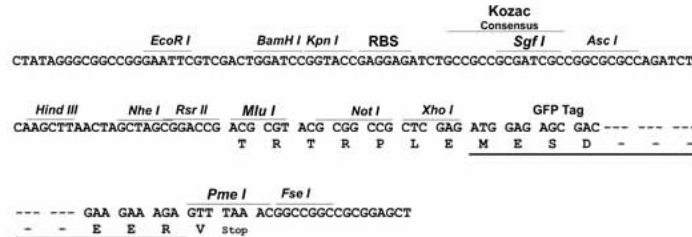
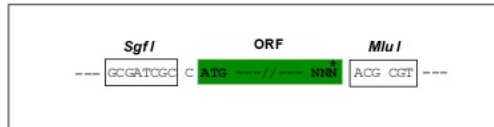
TRTRPLE - GFP Tag - V

**Restriction Sites:**

Sgfl-MluI

**Cloning Scheme:**

Cloning sites used for ORF Shutting:


**ACCN:** NM\_013381

**ORF Size:** 3072 bp

**OTI Disclaimer:** The molecular sequence of this clone aligns with the gene accession number as a point of reference only. However, individual transcript sequences of the same gene can differ through naturally occurring variations (e.g. polymorphisms), each with its own valid existence. This clone is substantially in agreement with the reference, but a complete review of all prevailing variants is recommended prior to use. [More info](#)
**OTI Annotation:** This clone was engineered to express the complete ORF with an expression tag. Expression varies depending on the nature of the gene.

**Components:** The ORF clone is ion-exchange column purified and shipped in a 2D barcoded Matrix tube containing 10ug of transfection-ready, dried plasmid DNA (reconstitute with 100 ul of water).

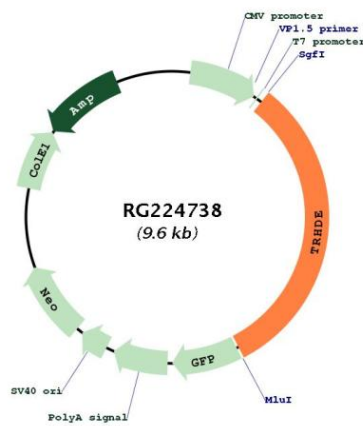
**Reconstitution Method:**

1. Centrifuge at 5,000xg for 5min.
2. Carefully open the tube and add 100ul of sterile water to dissolve the DNA.
3. Close the tube and incubate for 10 minutes at room temperature.
4. Briefly vortex the tube and then do a quick spin (less than 5000xg) to concentrate the liquid at the bottom.
5. Store the suspended plasmid at -20°C. The DNA is stable for at least one year from date of shipping when stored at -20°C.

**RefSeq:** [NM\\_013381.2](#)
**RefSeq Size:** 5666 bp

RefSeq ORF:	3210 bp
Locus ID:	29953
UniProt ID:	<u>Q9UKU6</u>
Cytogenetics:	12q21.1
Domains:	Peptidase_M1
Protein Families:	Druggable Genome, Protease, Transmembrane
Gene Summary:	This gene encodes a member of the peptidase M1 family. The encoded protein is an extracellular peptidase that specifically cleaves and inactivates the neuropeptide thyrotropin-releasing hormone.[provided by RefSeq, Dec 2008]

**Product images:**



Circular map for RG224738