

Product datasheet for **RG224705**

SPAG16 (NM_024532) Human Tagged ORF Clone

Product data:

Product Type:	Expression Plasmids
Product Name:	SPAG16 (NM_024532) Human Tagged ORF Clone
Tag:	TurboGFP
Symbol:	SPAG16
Synonyms:	PF20; WDR29
Mammalian Cell Selection:	Neomycin
Vector:	pCMV6-AC-GFP (PS100010)
E. coli Selection:	Ampicillin (100 ug/mL)



[View online »](#)

ORF Nucleotide Sequence:

>RG224705 representing NM_024532
 Red=Cloning site Blue=ORF Green=Tags(s)

TTTTGTAATACGACTCACTATAGGGCGGCCGGAATTCGTCGACTGGATCCGGTACCGAGGAGATCTGCC
 GCC**CGCATCGCC**

ATGGCTGCTCAGCGAGGGATGCCAGCTCCGCCGTGAGGGTCTGGAAGAGGCGTTGGGCATGGGTTTGA
 CGGCAGCCGGGGACGCGAGGGACACGGCGACCGGTGGCGGCTGAGGGCGCCTACTACCTGGAACAGT
 CACCATAACTGAAGCATCTGAAGATGACTATGAATATGAAGAGATACCAGATGACAAATTTAGCATCCCA
 GAAGGTGAAGAAGATCTGGCAAAAGCAATTCAGATGGCCCAAGAACAGGCTACAGATACTGAAATTTTGG
 AACGGAAAACAGTTCTTCCTTCAAAGCATGCAGTACCTGAAGTAATAGAAGACTTCTCTGCAATTTCTT
 GATCAAAATGGGAATGACCAGAACTCTTGATTGCTTTTCAGTCTGAATGGTATGAGTTAATACAGAAAAGGA
 GTGACTGAACTTAGAACTGTTGGGAATGTTCCAGATGTCTACCCAGATTATGCTTTTGGAAAATGAGA
 ACAAAAATTTAAAGAAAGATTTGAAGCACTACAAACAAGCAGCTGACAAAGCTAGAGAAGATTTGCTGAA
 AATTCAGAAAAGACGTGATTTTCATCGAATGCATCATAAGCGAATAGTCCAGGAAAAAACAATTAATT
 AATGACCTCAAAGGGTTGAAGTTACATTATGCATCTTATGAACCGACTATAAGGGTGTACATGAGAAAC
 ACCCACTTTACTGAAGGAGAAAATGCTGACCTCCTTGGAAAGAGACAAAGTAGTTGGGCAGATTTCTGG
 ACTTCAAGAAACATTGAAGAACTGCAAAGAGGACATAGTTACCATGGTCTCAAATTAAGTTGATCAT
 AGTCGTGAAAAAGAAAATGCACCAGAAGTCTACTCAGAAAGTCTTCGTGAAGCCAGGGAAACAAAACA
 AATGTAACAAGAAAGATGAAAGGCAATACAAAGGATTGAGAATTTCCCATAGATATGCAACCAATCCAAA
 CCTGAATGTTTCTAAAGAAAGTCTTCTCCAGCAAAATTTGACTACAAGCTGAAAAACATTTTGTAGACTC
 CATGAATTCAGTGAGCTGTGTCTCCATGCAACCCCAAAAGACATCCTAGTCTCTGTGGCAGGAGACC
 GACTCTGGAAGGTGTTGGGCCTTCCAAAATGCAATGTGCTTCTCACGGGATTTGGCCACACTGACTGGCT
 TTCAGACTGCTGCTTCCATCCCAGTGGCGACAAAATTTGGCTACTTCAAGTGGTGACACTACAGTTAAATTA
 TGGGATCTATGTAAGGCGATTGCATTTTGACCTTTGAAGGACACAGCCGCGCAGTGTGGTCTGCACAT
 GGCCTCCTGCGCAATTTTGTGGCTTCTCCTCACTGGATAAACTAGCAAAATTTGGGATGTTAATAG
 TGAAAGATGCAGATGTACTTTGTATGGACATACAGATTCTGTGAACAGCATTGAGTTTTTCTTCTCCTC
 AATACTCTTCTACAAGCTCTGCAGACAAGACCCTGTCTATATGGGATGCAAGAACAGGTATATGTGAGC
 AGTCACCTTATGGTCACATGCATTCTATCAATGATGCCATTTTGTATCCAGGGTCCACATGATAGCATC
 CTGTGATGCTGTGGGTTACAAAGCTGTGGGACTTTCGGAAGCTGTTACCAATTGTGTCCATCGATATA
 GGTCCAAGTCTGGCAATGAGGTGAATTTTGATTATCAGGTCGAGTTTTAGCTCAGGCAAGTGGCAATG
 GTGTTATCCATTTGCTAGATCTTAAATCTGGGGAGATTACAAATTTGATGGGCCACGAAAACGAGGCACA
 CACGGTTGTGTTTTCTCACGACGGGGAGATTCTCTTTTCTGGAGGCTCTGACGGCACAGTTCGAACGTGG
 TCT

ACGCGTACGCGGCCGCTCGAG - GFP Tag - GTTTAA

Protein Sequence:

>RG224705 representing NM_024532
 Red=Cloning site Green=Tags(s)

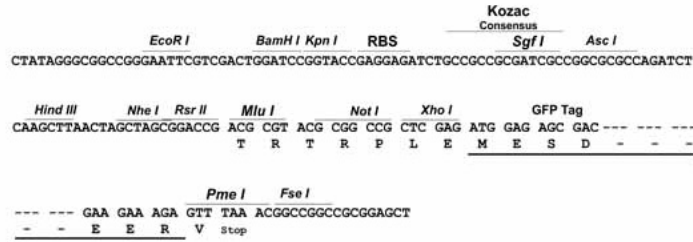
MAAQRGMPSSAVRVLLEALGMGLTAAGDARDTADAVAAEGAYYLEQVTITEASEDDYEYEEIPDDNFSIP
 EGEEDLAKAIQMAQEATDTEILERKTVLPSKHAVPEVIEDFLCNFLIKMGMRTRLDCFQSEWYELIQKG
 VTELRVTGNVPDYVTQIMLLENENKNLKKDLKHYKQAADKAREDLLKIQKERDFHRMHHKRIVQEKNKLI
 NDLKGLKLHYASYEPTIRVLHEKHHTLLKEKMLTSLERDKVVGQISGLQETLKKLQRGHSYHGPQIKVDH
 SREKENAPEGPTQKGLREAREQNKCKTKMKGNTKDSEFPIDMQPNPNLNVSKESLSPAKFDYKLNIFRL
 HELPVSCVSMQPHKDILVSCGEDRLWKVLGLPKCNVLLTGFGHTDWLSDCCFHPSGDKLATSSGDTTVKL
 WDLCKGDCILTFEGHSRAVWSCTWHSCGNFVASSSLDKTSKIWDVNSERCRTL YGHTDSVNSIEFFPFS
 NTLTSSADKTL SIWDARTGICEQSLYGHMHSINDAIFDPRGHMIASCDACGVTKLWDFRKLPIVSI
 GSPSPGNEVNFSSGRVLAQASNGVVIHLDDLKSGEIHKLMPGHENEAHTVVF SHDGEILFSGGSDGTVRTV
 S

TRTRPLE - GFP Tag - V

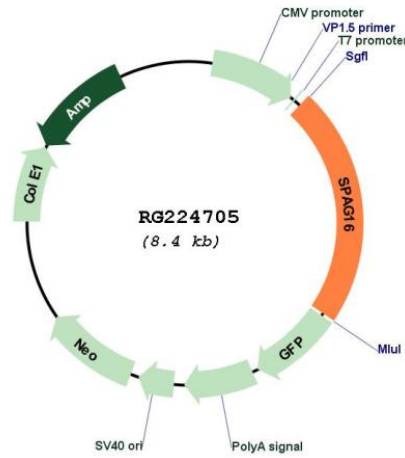
Restriction Sites: SgfI-MluI

Cloning Scheme:

Cloning sites used for ORF Shutting:



Plasmid Map:



ACCN: NM_024532

ORF Size: 1893 bp

OTI Disclaimer:	The molecular sequence of this clone aligns with the gene accession number as a point of reference only. However, individual transcript sequences of the same gene can differ through naturally occurring variations (e.g. polymorphisms), each with its own valid existence. This clone is substantially in agreement with the reference, but a complete review of all prevailing variants is recommended prior to use. More info
OTI Annotation:	This clone was engineered to express the complete ORF with an expression tag. Expression varies depending on the nature of the gene.
Components:	The ORF clone is ion-exchange column purified and shipped in a 2D barcoded Matrix tube containing 10ug of transfection-ready, dried plasmid DNA (reconstitute with 100 ul of water).
Reconstitution Method:	<ol style="list-style-type: none">1. Centrifuge at 5,000xg for 5min.2. Carefully open the tube and add 100ul of sterile water to dissolve the DNA.3. Close the tube and incubate for 10 minutes at room temperature.4. Briefly vortex the tube and then do a quick spin (less than 5000xg) to concentrate the liquid at the bottom.5. Store the suspended plasmid at -20°C. The DNA is stable for at least one year from date of shipping when stored at -20°C.
RefSeq:	NM_024532.5
RefSeq Size:	2189 bp
RefSeq ORF:	1896 bp
Locus ID:	79582
UniProt ID:	Q8N0X2
Cytogenetics:	2q34
Gene Summary:	Cilia and flagella are comprised of a microtubular backbone, the axoneme, which is organized by the basal body and surrounded by plasma membrane. SPAG16 encodes 2 major proteins that associate with the axoneme of sperm tail and the nucleus of postmeiotic germ cells, respectively (Zhang et al., 2007 [PubMed 17699735]).[supplied by OMIM, Jul 2008]