

## Product datasheet for **RG224693**

### **TORC1 (CRTC1) (NM\_001098482) Human Tagged ORF Clone**

#### **Product data:**

Product Type:	Expression Plasmids
Product Name:	TORC1 (CRTC1) (NM_001098482) Human Tagged ORF Clone
Tag:	TurboGFP
Symbol:	CRTC1
Synonyms:	Mam-2; MAML2; MECT1; TORC-1; TORC1; WAMTP1
Mammalian Cell Selection:	Neomycin
Vector:	pCMV6-AC-GFP (PS100010)
E. coli Selection:	Ampicillin (100 ug/mL)



[View online »](#)

**ORF Nucleotide Sequence:**

>RG224693 representing NM\_001098482  
 Red=Cloning site Blue=ORF Green=Tags(s)

TTTTGTAATACGACTCACTATAGGGCGGCCGGGAATTCGTCGACTGGATCCGGTACCGAGGAGATCTGCC  
 GCC**CGGATCGCC**

ATGGCGACTTCGAACAATCCGCGGAAATTCAGCGAGAAGATCGCGCTGCACAATCAGAAGCAGGCGGAGG  
 AGACGGCGGCTTCGAGGAGGTCATGAAGGACCTGAGCCTGACGCGGGCCGCGCGGCTCCAGCTCCAGAA  
 ATCCCAGTACCTGCAACTGGGCCCCAGCCGAGGCCAGTACTATGGCGGGTCCCTGCCCAACGTGAACCA  
 ATCGGGAGTGGCACCATGGACCTGCCCTTCAGCCAGCGGATTTCTGGGGGAGGCCCTGGCAGCGGCTC  
 CTGTCTCTGACCCCTTCCAATCCTCGGGCCTGGACACCAGCCGACCACCCGGCACCATGGGCTGGT  
 GGACAGGGTGTACCGGGAGCGTGGCCGGCTCGGCTCCCCACACCCGCGGCCCTGTCACTGGACAAAAC  
 GGACGGCAGGCGGACAGCTGCCCTATGGCACCATGTACCTCTCACCACCCGCGGACACCAGCTGGAGAA  
 GGACCAATTCTGACTCCGCCCTGCACCAGAGCACAATGACGCCACGCAGCCAGAATCCTTTAGCAGTGG  
 GTCCCAGGACGTGCACCAGAAAAGAGTCTTACTGTTAACAGTCCCAGGAATGGAAGAGACCACATCAGAG  
 GCAGACAAAAACCTTTCCAAGCAAGCATGGGACACCAAGAAGACGGGGTCCAGGCCCAAGTCTGTGAGG  
 TCCCCGGAATCAACATCTTCCCGTCTGCCGACCAGGAAAACACTACAGCCCTGATCCCCGCCACCCACAA  
 CACAGGGGGTCCCTGCCGACCTGACCAACATCCACTTCCCCTCCCCGCTCCCGACCCCGCTGGACCCC  
 GAGGAGCCACCTTCCCTGCACTGAGCAGCTCCAGCAGCACCGGCAACCTCGCGGCCAACCTGACGCACC  
 TGGGATCGGTGGCGCCGCCAGGGAATGAGCACACCTGGCTCCTCTCCACAGCACCGCCAGCTGGCGT  
 CAGCCCCCTGTCCCTGAGCACAGAGGCAAGGCGTCAGCAGGCATCGCCACCCCTGTCCCCGCTGTACCC  
 ATCACTCAGGCTGTAGCCATGGACGCCCTGTCTCTGGAGCAGCAGCTGCCCTACGCCTTCTTACCAGG  
 CGGGCTCCAGCAGCCACCGCCGAGCCACCCCGCCGCTCCTCCACCCGCTCCAGCAGCCACC  
 ACCCCCCGACACCCACAGGCGCCGCTCCGCTGCCCCCTGGTGGCCCTGTTGCCAGCGCCAGCCTG  
 ACTCGTGGGCCACAGCCGCCCGCTTGCAGTACCGGTACCGTCTCTCTCCCCAGTCCCCCCAGAGA  
 ACCCTGGCCAGCCATCGATGGGGATCGACATCGCCTCGCGCCGGCTCTGCAGCAGTACCGCACTAGCGC  
 CGGCTCCCCGCCAACAGTCTCCACCTCGCCAGTCTCCAATCAAGGCTTCTCCCCAGGGAGCTCCCCG  
 CAACACACTTCCACCCTGGGAGCGTGTGGGGACGCGTACTATGAGCAGCAGATGGCGGCCAGGCAGG  
 CCAATGCTCTGTCCACCAGCTGGAGCAGTTCAACATGATGGAGAACGCCATCAGCTCCAGCAGCCTGTA  
 CAGCCCGGCTCCACACTCAACTACTCGCAGGCGGCCATGATGGGCTCACGGGCAGCCACGGGAGCCTG  
 CCGGACTCGCAGCAACTGGGATACGCCAGCCACAGTGGCATCCCCAACATCATCCTCACAGTGCAGGAG  
 AGTCCCCCCCCAGCCTCTCTAAAGAACTGACCAGCTCTCTGGCCGGGGTGGCGGAGTCACTTCGACTC  
 CGACAGCCAGTTTCCCCTGGACGAACTCAAGATCGACCCCTGACCCCTGACGCTGACGGACTGCACATGCTCAAC  
 GACCCCGACATGGTTCTGGCCGACCCAGCCACCGAGGACACCTTCCGGATGGACCGCCTG

AG**CGGACCG**ACGCGTACGCGGCCGCTCGAG – GFP Tag – GTTTAA

**Protein Sequence:**

>RG224693 representing NM\_001098482  
 Red=Cloning site Green=Tags(s)

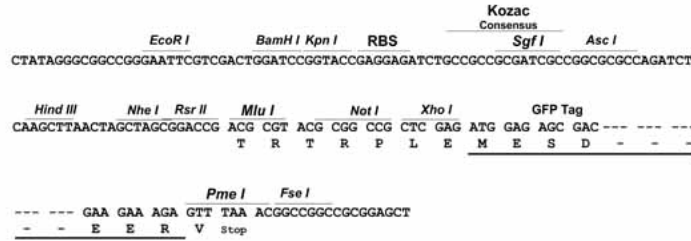
MATSNPRKFSEKIALHNQKQAEETAFAFEEVMKDLSLTRAARLQLQKSQYLQLGPSRQYYGGSLPNVNO  
 IGSMTDLPFQPSGFLGEALAAAPVSLTPFQSSGLDTSRTTRHHGLVDRVYRERGRLGSPHRRPLSVDKH  
 GRQADSCPYGMYLSPPADTSWRRTNDSALHQSTMTPQPEFSFGSQQDVHQKRVLLLTVPGMEETTSE  
 ADKNLSKQAWDTKKTGSRPKSCEVPGINIFPSADQENTTALIPATHNTGGSLPDLTNIHFPSPLPTPLDP  
 EEPTFPALSSSSSTGNLAANLTHLIGGAGQGMSTPGSSPQHRPAGVSPLSLSTEARRQQASPTLSPLSP  
 ITQAVAMDALSLEQLPYAFFTQAGSQPPPPQPPPPPPASQPPPPPPQAPVRLPPGGPLLPASL  
 TRGPQPPLAVTPSSLQSPPENPGQPSMGIDIASAPALQQYRTSAGSPANQSPTSPVSNQGFSPGSSP  
 QHTSTLGSVFGDAYEQQMAARQANALSHQLEQFNMMENAISSSSLYSPGSTLNYSQAAMMGLTGSHGSL  
 PDSQQLGYASHSGIPNIILTVTGESPPSLSKELTSSLAGVGDVDFSDSDSQFPLDELKIDPLTLDGLHMLN  
 DPDMVLADPATEDTFRMDRL

SGP**TRRRLE** – GFP Tag – V

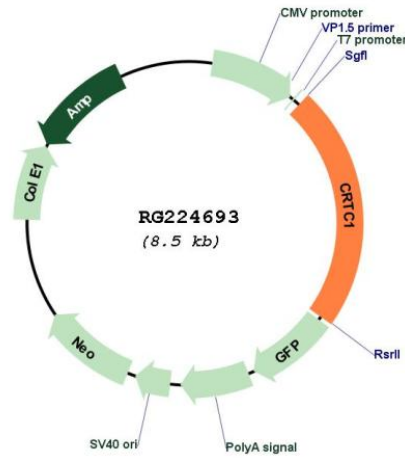
Restriction Sites: SgfI-RsrII

Cloning Scheme:

Cloning sites used for ORF Shuttling:



Plasmid Map:



ACCN: NM\_001098482

ORF Size: 1950 bp

<b>OTI Disclaimer:</b>	The molecular sequence of this clone aligns with the gene accession number as a point of reference only. However, individual transcript sequences of the same gene can differ through naturally occurring variations (e.g. polymorphisms), each with its own valid existence. This clone is substantially in agreement with the reference, but a complete review of all prevailing variants is recommended prior to use. <a href="#">More info</a>
<b>OTI Annotation:</b>	This clone was engineered to express the complete ORF with an expression tag. Expression varies depending on the nature of the gene.
<b>Components:</b>	The ORF clone is ion-exchange column purified and shipped in a 2D barcoded Matrix tube containing 10ug of transfection-ready, dried plasmid DNA (reconstitute with 100 ul of water).
<b>Reconstitution Method:</b>	<ol style="list-style-type: none"><li>1. Centrifuge at 5,000xg for 5min.</li><li>2. Carefully open the tube and add 100ul of sterile water to dissolve the DNA.</li><li>3. Close the tube and incubate for 10 minutes at room temperature.</li><li>4. Briefly vortex the tube and then do a quick spin (less than 5000xg) to concentrate the liquid at the bottom.</li><li>5. Store the suspended plasmid at -20°C. The DNA is stable for at least one year from date of shipping when stored at -20°C.</li></ol>
<b>RefSeq:</b>	<a href="#">NM_001098482.2</a>
<b>RefSeq Size:</b>	7009 bp
<b>RefSeq ORF:</b>	1953 bp
<b>Locus ID:</b>	23373
<b>UniProt ID:</b>	<a href="#">Q6UUV9</a>
<b>Cytogenetics:</b>	19p13.11
<b>Protein Families:</b>	Transcription Factors
<b>Gene Summary:</b>	Transcriptional coactivator for CREB1 which activates transcription through both consensus and variant cAMP response element (CRE) sites. Acts as a coactivator, in the SIK/TORC signaling pathway, being active when dephosphorylated and acts independently of CREB1 'Ser-133' phosphorylation. Enhances the interaction of CREB1 with TAF4. Regulates the expression of specific CREB-activated genes such as the steroidogenic gene, StAR. Potent coactivator of PGC1alpha and inducer of mitochondrial biogenesis in muscle cells. In the hippocampus, involved in late-phase long-term potentiation (L-LTP) maintenance at the Schaffer collateral-CA1 synapses. May be required for dendritic growth of developing cortical neurons (By similarity). In concert with SIK1, regulates the light-induced entrainment of the circadian clock. In response to light stimulus, coactivates the CREB-mediated transcription of PER1 which plays an important role in the photic entrainment of the circadian clock. [UniProtKB/Swiss-Prot Function]