

Product datasheet for **RG224664**

BAI2 (ADGRB2) (NM_001703) Human Tagged ORF Clone

Product data:

Product Type:	Expression Plasmids
Product Name:	BAI2 (ADGRB2) (NM_001703) Human Tagged ORF Clone
Tag:	TurboGFP
Symbol:	BAI2
Synonyms:	brain-specific angiogenesis inhibitor 2; Brain-specific angiogenesis inhibitor-2
Mammalian Cell Selection:	Neomycin
Vector:	pCMV6-AC-GFP (PS100010)
E. coli Selection:	Ampicillin (100 ug/mL)
ORF Nucleotide Sequence:	>RG224664 representing NM_001703 Red=Cloning site Blue=ORF Green=Tags(s)

TTTTGTAATACGACTCACTATAGGGCGGCCGGAATTCGTCGACTGGATCCGGTACCGAGGAGATCTGCC
GCC**CGATCGCC**

ATGGAGAATACAGGTTGGATGGGCAAGGGACATAGGATGACCCAGCCTGTCCCCTTTACTGTCTGTGA
TTCTGTCCCTGCGCCTGGCCACCGCTTCGACCCCGCCCCAGTGCCTGCTCTGCCCTGGCTCGGGTGT
GCTCTACGGGGCTTCTCGCTGCAGGACCTTTTCTACCATCGCCTCGGGCTGCTCTGGACCTGGAG
AACCTGACCCACCAAGTACTCCCTCTACCTGCGCTTCAACCGCAGGAGCAGGTGTGCGCACACTTTG
CCCCCGCTGTGCCCTGGACCACTACCTGGTCAACTTACCTGCCTGCGGCCTAGCCCCGAGGAGGC
GGTGGCCAGGCGGAGTCAAGAGTGGGGCGCCAGAAGAGGAGGAGGCAGAGGCGGACGGGGTTGGAG
CTGTGCAGCGGCTCAGGCCCTTACCTTCTGCACTTCGACAAGAACTTCGTGCAGCTGTGCCTGTCCG
CTGAGCCCTCCGAGGCCCGCGCCTGCTGGCGCCCGCTGCCCTAGCCTTCCGCTTGTGCGAGGTCTTGT
CATCAACAACAACAACCTAGCCAATTCACCTGTGGTGTGCTCTGCCGCTGGAGTGGAGTGTGGCCGC
GCTGCCGCGAGGGCTGCGGCTTTGCTCAGCCAGGCTGCAGTGCCTGGAGAGGCGGGGGCCGCTCCA
CCACCACCATCTCCAGGCCCTCTGCTGCCACACCTGTCCAATGCCCTGGTCCCGGGGGCCAGC
CCCACCTGCTGAGGCCGATTTGCACTCGGGGAGCAGCAATGATCTGTTCAACAACCGAGATGAGATATGGT
GAGGAGCCGGAAGAGGAACCGAAAGTAAAACCCAGTGGCCGAGGTCTGCAGATGACCTGGCTATACA
TGGCGCAGACAGGCGACCCGCGGCTGAGGAGTGGTCCCGTGGAGCGTGTGTTCCCTGACGTGTGGCA
GGGTCTGCAGGTGCGGACCCGCTCCTGTGTGCTCCTCCCTATGGGACCTGTGCAGCGGGCCCTGCGG
GAGACCAGGCCCTGCAACAATTCAGCCACCTGCCAGTGCACGGCGTGTGGGAGGAGTGGGGTCTGGA
GCCTGTGCTCCCGCAGCTGCGGGCGGGGTCCCGAGCCGGATGCGGACCTGCGTCCCCCCAGCACGG
CGGCAAGGCTGCGAGGGTCTGAGCTGCAGACTAAGCTCTGCAGTATGGCTGCCTGCCCGTGGAAAGGC
CAGTGGTTAGAATGGGGTCCCTGGGGCCATGCTCCACGTCTGTCCAATGGGACCAACAGCGCAGCC
GGAAGTGCAGCGTGGCGGCCAGCCTGGGCCACATGCACGGTGCCTCACTGACACCCGGGAGTGCAG
CAACCTCGAGTCCCGGCCACTGATAGCAAGTGGGGCCATGGAATGCGTGGAGCCTGTGCTAAGACG



[View online >](#)

TGTGACACAGGCTGGCAGCGCCGCTTCCGCATGTGCCAGGCCACGGGCACGCAGGGCTACCCCTGCGAGG
GCACCGGAGAGGAGGTGAAGCCTTGTAGTGAGAAGAGGTGTCCAGCCTTCCATGAGATGTGCAGGGATGA
GTACGTGATGCTGATGACGTGGAAGAAGGCAGCTGCTGGCGAGATCATCTACAACAAGTGCCCCCGAAT
GCCTCAGGGTCTGCCAGCCGCCGCTGTCTCCTCAGTGCCCAAGGCGTGGCGTACTGGGGGTGCCAGCT
TTGCTCGCTGCATCTCCCATGAGTACCGCTACCTGTATCTGTCACTTAGGGAGCACCTGGCCAAGGGGCA
GCGCATGTGGCAGGCGAGGGCATGTGCGAGGTGGTGGCAGCCTGCAGGAGTACTGGCCCGCGCACC
TACTATAGTGGGACCTGCTCTTCTCTGTGGCATTCTGAGGAATGTCACTGACACCTTTAAGAGGGCCA
CCTACGTGCCCTCGGCTGATGATGTGCAGCGCTTCTTCCAGGTGGTGAGCTTCATGGTGGATGCGGAAAA
CAAGGAGAAGTGGGACGATGCTCAGCAGGTGTCCCTGGCTCTGTGCACCTGCTCCGTGTCGTGGAGGAC
TTCATTACCTGGTGGGCGATGCTCTCAAGGCCTTCCAGAGCTCTCTGATTGTCACAGATAATCTAGTGA
TCAGCATTAGCGAGAGCCCGTCTCAGCTGTGTCCAGTGACATCACGTTCCCATGCGGGGCCGCCGGG
CATGAAGGACTGGGTGGGCACTCAGAGGACCGCCTTCTTCCCAAGGAGGTGCTCAGCCTCTCTCC
CCAGGGAAGCCAGCCACATCTGGGGCAGCAGCCAGCCTGGCAGGGGAGGGGCCAGGAACGCTGCCTC
CTGGCCAGGCCACTCCACCAGCGCCTCTCCAGCAGACCCTGATGAGTCTCTACTTTGTGATCGG
TGCTGTACTCTACCGCACCTTGGCCTCATCTGCCGCCTCCAGGCCCGCTGGCCGTACATCCCGG
GTGATGACAGTACTGTGCGCCCCCTACCCAGCCTCCAGCTGAGCCCCATCACTGTGGAGCTCTCT
ACATCATCAATGGGACCACGGATCCCCATTGCGCCAGCTGGGACTACTCCAGAGCAGATGCCAGCTCAGG
AGACTGGGACACTGAAAATTGCCAGACCCTGGAGACCCAGGCAGCTCACACCCGCTGCCAGTGCAGCAC
CTGTCCACCTTTGCTGTACTAGCCAGCCGCCAAGGACCTGACCCTGGAGCTGGCGGGTCCCCCTCGG
TCCCCCTGGTGATCGGCTGTGACGTGTGTCATGGCGTGTCAACCCTGCTCGCCATCTATGCCGCTT
TTGGAGTTTCAAAAATCGAACGCTCCATCATCTTGTGAACCTTCTGCCTGTCCATCTTGGCATCAAC
ATCCTGATCCTCGTGGCCAGTCCCGGTGCTGAGCAAGGGCGTGTGACCATGACGGTGCCTTCTCTGC
ACTTCTTCTTCTCTCTCTCTTCTTGGTGGTGTACCGAGGCTGGCAGTCTACTGGCTGTGATGG
GCGGATGCGCACCCGCTCGTTTCGAAGCGCTTCTCTGCTGGGCTGGGCTCTGCTGCCCTGGTGGTG
GCCGTGTCTGTTGGCTTTACCCGAACGAAAGGATACGGTACATCCAGCTACTGCTGGCTCTCCCTGGAGG
GCGGCTGCTCTACGCTTTGTGGGCCCTGCAGCCGTCATTGTCTGGTGAACATGCTCATCGGAATCAT
CGTCTTCAACAAGCTCATGGCAGTGTGGCATCTCCGACAAATCCAAGAAGCAGAGGGCCGGTGGAG
CGGTGCCCTGGCCAGCCTGCTCTCCCTGCTCAGCGTGTGGAGCGGTCCCAGCCCCCTGCTCAGCT
CAGCCTCGGCCAGGAACGCCATGGCCTCACTCTGGAGCTCTGCGTGGTGTGCCCTGCTGGCGCTCAC
CTGGATGTCTGCCGCTCTGGCTATGACAGACCCGCTTCCGTCTTCCAGGCCCTTTTGTGTCTTC
AACTCCGCGCAGGGCTTTGTCACTGCTGTGCACTGCTTCTGCGCCAGAGGTCCAGGATGTGGTGA
AGTGCCAGATGGGGGTGTGCCGGCTGATGAGAGCGAAGACTCCCTGACTCGTGTAAAGAACGGGAGCT
GCAGATCCTGTCAGACTTTGAAAAGGATGTGGATCTGGCTTGTCAAACAGTGTGTTCAAGGAGGTCAAC
ACTTGAACCCGTCCACCATCACGGGCACACTATCCCGCCTGTCCCTGGATGAGGATGAGGAGCCCAAGT
CCTGCCTCGTGGGCCCTGAGGGCAGCCTCAGCTTCTACCACTGCCTGGGAATATCCTGGTGGCCATGGC
AGCCTCACAGGGCTGGGGGAGCCTCCGCCCCACAGGAGGCCAACCCCTGTTTACATGTGTGGGAGGGT
GGCCTGCGGCAGCTGGACCTCACATGGCTGCGGCCACTGAGCCAGGCTCTGAGGGAGACTACATGGTGC
TGCCCCGGCGGACTTTGAGCCTGCAGCCTGGCGGTGGGGTGGAGGTGGTGGAGTGGCCCCAGGGCCCCG
GCCGGAGGGGACCCCCGGCGAGCTGCCAAGCAGTGGCCACACTGAAGGCTACCCAGCTTCTGTCTCC
GTGGACCACTCGGCCTGGGGCTGGGCCCTGCCTATGGATCTCTCAGAATCCCTATGGAATGACCTTCC
AACCGCCACCGCGACACCCAGCGCCCGCAAGTGCCCGAGCCAGGGGAGCGCAGCCGACCATGCCTCG
CACCGTGCCCGGCTTACCATGAAGATGGGCTCCCTGGAGCGAAAGAAATTACGGTATTACAGACCTGGAC
TTTGAGAAGGTGATGCACACCCGAAACGGCATTAGAACTCTACCAGGACTCAACCAGAAGTTCCACA
CTTTGACCGCTACCGCAGCCAGTCCACGGCCAAGAGGGAGAAGCGGTGGAGTGTGCTCTCGGGTGGGGC
AGCCGAGCGGAGCGTGTGACCGATAAGCCAGCCCTGGGGAGCGCCCCAGCTTGTCCCAACATCGGCGC
CATCAGAGCTGGAGCACCTTCAAATCTATGACACTGGGCTCGCTGCCCCCAAGCCCCGAGAACGGCTGA
CTCTGCACCGGGCAGCAGCTGGGAGCCACAGAACCACCGGATGGTACTTCCAGACAGAGGTG

ACGCGTACGCGGCCGCTCGAG – GFP Tag – GTTTAA

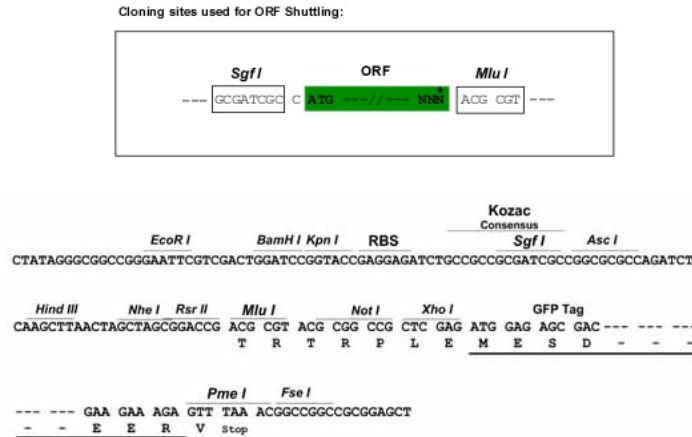
Protein Sequence: >RG224664 representing NM_001703
 Red=Cloning site Green=Tags(s)

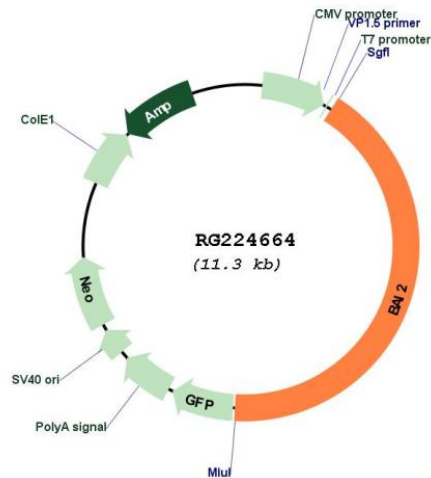
MENTGWMGKGRMTPACPLLLSVILSLRLATAFDPAAPSACSALASGVLYGAFSLQDLFPTIASGCSWTLE
 NPDPTKYSLYLRFNRQEQCAHFAPRLPLDHYLVNFTCLRPSPEEAVAQAESEVGRPEEEEEAEAAAGLE
 LCSGSGPFTFLHFDKNFVQLCLSAEPSEAPRLAPAALAFRFVEVLLINNNSQFTCGVLCRWSEECGR
 AAGRACGFAQPGCSCPGEAGAGSTTTTSPGPPAAHTLSNALVPGGPAPPAEADLHSGSSNDLFTTEMRYG
 EEPPEEPKVKTQWPRSADEPGLYMAQTGDPAEEWSPWSVCSLTCGQGLQVRTRSCVSSPYGTLCSGPLR
 ETRPCNNSATCPVHGVEEWGSWSLCSRSCGRGSRMRMTCVPPQHGGKACEGPELQTKLCSMAACPVGE
 QWLEWGPWGPCSTSCANGTQQRSRKCSVAGPAWATCTGALTDRECSNLECPATDSKWPWNAWSLCSKT
 CDTGWQRFRMCQATGTQGYPCGTGEEVKPCSEKRCPAFHEMCRDEYVMLMTWKKAAAGEIIYNKCPPN
 ASGSASRRCLLSAQGVAYWGLPSFARCISHEYRYLYLSLREHLAKGQRMLAGEGMSQVVRSLQELLARRT
 YYSGDLLFSVDILRNVTDTFKRATYVPSADDVQRFQVVSFVMDAENKEKWDDAQVSPGSVHLLRVVVD
 F IHLVGDALKAFQSSLIVTDNLV I S I Q R E P V S A V S S D I T F P M R G R R G M K D W V R H S E D R L F L P K E V L S L S S
 PGKPATSGAAGSPGRGRPGTVPPGPGHSHQRLLPADPDESSYFVIGAVLYRTLGLILPPRPLAVTSR
 VMTVTVRPPTQPPAEPLITVELSYIINGTTDPHCASWDYSRADASSGDWDTENCQLETQAHTRCQCQH
 LSTFAVLAQPPKDLTLELAGSPVPLVIGCAVSCMALLTLAIYAFAFRFIKERSIILLNFCLASILASN
 ILILVQGSRVLSKGVCTMTAAFLHFFFLSSFCWVLTEAWQSYLAVIGMRTRLVRKRFLCLGWLPALVV
 AVS V G F T R T K G Y G T S S Y C W L S L E G G L L Y A F V G P A A V I V L V N M L I G I I V F N K L M A R D G I S D K S K K Q R A G S E
 RCPWASLLLPCSACGAVPSPLLSSASARNAMASLWSSCVLPLLALTWMSAVLAMTDRRSVLFQALFAVF
 NSAQGFVITAVHCFLRREVQDVVKCQMVCRADESESDSPDCKNGQLQILSDFEKDVLACQTVLFKEVN
 TCNPSTITGTL SRLSLDEDEEPKSCLVGPEGSLSF SPLPGNILVPMAASPGLGEP PPPQ E A N P V Y M C G E G
 GLRQLDLTWRPTEPGSEGDYMLPRRTLSLQPGGGGGGGEDAPRARPEGTPRRAAKTVAHTEGYPSFLS
 VDHSGLGLGPAYGSLQNPYGMTFQPPPTPSARQVPEPGERSRTPRTPVPGSTMKMGSLERKRLRYDLD
 FEKVMHTRKRHSELYHEL N Q K F H T F D R Y R S Q S T A K R E K R W S V S S G G A A E R S V C T D K P S P G E R P S L S Q H R R
 HQSWSTFKSMTLGS L P P K P R E R L T L H R A A A W E P T E P P D G D F Q T E V

TRTRPLE - GFP Tag - V

Restriction Sites: SgfI-MluI

Cloning Scheme:



Plasmid Map:


ACCN: NM_001703

ORF Size: 4755 bp

OTI Disclaimer: The molecular sequence of this clone aligns with the gene accession number as a point of reference only. However, individual transcript sequences of the same gene can differ through naturally occurring variations (e.g. polymorphisms), each with its own valid existence. This clone is substantially in agreement with the reference, but a complete review of all prevailing variants is recommended prior to use. [More info](#)

OTI Annotation: This clone was engineered to express the complete ORF with an expression tag. Expression varies depending on the nature of the gene.

Components: The ORF clone is ion-exchange column purified and shipped in a 2D barcoded Matrix tube containing 10ug of transfection-ready, dried plasmid DNA (reconstitute with 100 ul of water).

Reconstitution Method:

1. Centrifuge at 5,000xg for 5min.
2. Carefully open the tube and add 100ul of sterile water to dissolve the DNA.
3. Close the tube and incubate for 10 minutes at room temperature.
4. Briefly vortex the tube and then do a quick spin (less than 5000xg) to concentrate the liquid at the bottom.
5. Store the suspended plasmid at -20°C. The DNA is stable for at least one year from date of shipping when stored at -20°C.

RefSeq: [NM_001703.2](#), [NP_001694.2](#)

RefSeq Size: 5434 bp

RefSeq ORF: 4758 bp

Locus ID: 576

Cytogenetics: 1p35.2

Protein Families: Druggable Genome, Transmembrane

Gene Summary: This gene encodes a seven-span transmembrane protein that is thought to be a member of the secretin receptor family. The encoded protein is a brain-specific inhibitor of angiogenesis. The mature peptide may be further cleaved into additional products (PMID:20367554). Alternative splicing results in multiple transcript variants. [provided by RefSeq, Jun 2014]