

Product datasheet for **RG224644**

DBX2 (NM_001004329) Human Tagged ORF Clone

Product data:

Product Type:	Expression Plasmids
Product Name:	DBX2 (NM_001004329) Human Tagged ORF Clone
Tag:	TurboGFP
Symbol:	DBX2
Mammalian Cell Selection:	Neomycin
Vector:	pCMV6-AC-GFP (PS100010)
E. coli Selection:	Ampicillin (100 ug/mL)
ORF Nucleotide Sequence:	>RG224644 representing NM_001004329 Red=Cloning site Blue=ORF Green=Tags(s)

TTTTGTAATACGACTCACTATAGGGCGGCCGGAATTCGTCGACTGGATCCGGTACCGAGGAGATCTGCC
GCC**CGATCGCC**

ATGCTCCCCAGCGCGGTGCGAGCCACGCCGGTGCCTACTGGGACGTTGTGGCTTCTCCGCGCTCCTCA
ACCTCCCCGCTGCGCCCGGCTTTGGCAACCTGGGCAAGAGTTTCTGATCGAGAATTTGCTGCGGGTCGG
GGGCGCCCAACGCCAGGCTGCAGCCGCCCGCCACGACCCGGCGACCCGCTGGCCACCGCGGGC
GCGCAGTCCGGCCCTGCCTGCTAGCCAGTCCCTAAAGCTGTGCCCGCAGCCGAACAAGTTAGCC
CCGCCGGGCGCCCTACGGAACGCGGTGGGCTTTCAAGTGTGCTCCCTCTGCGGACAGTGCAGGGCT
GCCGGGCGGGCTCCGGGGACCGAGACTGTACCTTCCAGCCTTCAGCGCCAGCACCTTCCAAACCTTTC
CTTCTGAGCACCCGCCATTCTACTCGGCGTGCTGCGGTGGTCTGTCGCGCCCTGCATCCTCCACTG
CTTTTCCAAGAGAAGAGAGCGTGTCTCTCCTGACACAGGACTCTAATCCAAAGCTCGGAGGGGCAT
TTAAGAAGAGCTGTCTTTCTGAGGACCAGAGAAAGGCTCTGGAGAAAATGTTTCAGAAACAGAAATAT
ATCAGCAAACAGACCGAAAGAACTTGCCATCAACTGGGACTAAAGGAATCACAGGTGAAAATTTGGT
TTCAGAACAGGAGGATGAAATGGCGGAATTCAAAGAAAAGGAAGTCTTCCAACAGGTGTATCCAAGA
AGTAGGTCTTCAAGAGGATCCCCTCTCAGGTCTGCTCTGGGTTCCCTTCTCCATGTCTTCAATATGG
GACGTCCCCAACAGCACTCAAGTCCAAGATGGAGGGAGAATTCTCCAGAACCTTCAGAAAGACTAATCC
AGGAGAGTTCAAGGGCACCCACCCAGAAAGCAAAATCACTGCAAGGTGCCTTATATTTATGTTCTGAAGA
AGAAGCTGGAAGCAAGGGTGTACTTACTGGGGCCGTC

ACGCGTACGCGGCCGCTCGAG - GFP Tag - GTTTAA



[View online »](#)

Protein Sequence: >RG224644 representing NM_001004329
Red=Cloning site Green=Tags(s)

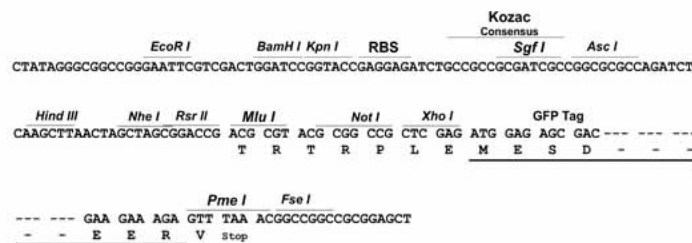
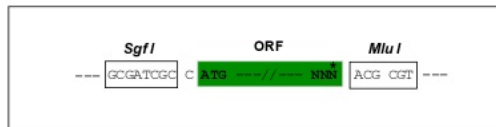
MLPSAVAAHAGAYWDVVASSALLNLPAAPGFNGLGKSFLIENLLRVGGAPT PRLQPPAPHPATALATAG
 AQLRPLPASPVPLKLCPAAEQVSPAGAPYGTRWAFQVLSADSARLPGRAPGDRDCTFQPSAPAPSKPF
 LLSTPPFYSACCGGSCRRPASSTAFPREE SVLPLLTDQSNKARRGILRRAVFSEDQRKALEKMFQKQKY
 ISKTDRKKLA INLGLKESQVKIWFQNRMKWRNSKEKEVLSNRCIQEVGLQEDPLSR SALGFPPSPCPSIW
 DVPQQHSSPRWRENSPEP SERLIQESSGAPPEANSLQ GALYLCSEEEAGSKGVL TGAV

TRTRPLE - GFP Tag - V

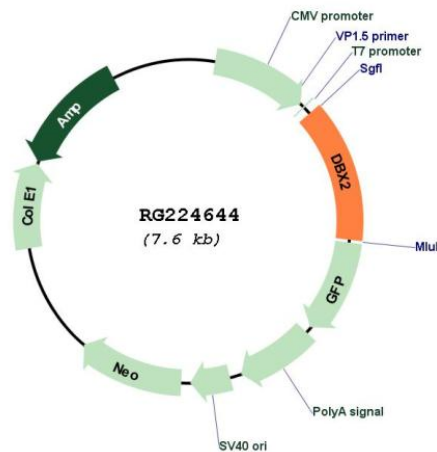
Restriction Sites: SgfI-MluI

Cloning Scheme:

Cloning sites used for ORF Shutting:



Plasmid Map:



ACCN: NM_001004329

ORF Size: 1017 bp

OTI Disclaimer:	The molecular sequence of this clone aligns with the gene accession number as a point of reference only. However, individual transcript sequences of the same gene can differ through naturally occurring variations (e.g. polymorphisms), each with its own valid existence. This clone is substantially in agreement with the reference, but a complete review of all prevailing variants is recommended prior to use. More info
OTI Annotation:	This clone was engineered to express the complete ORF with an expression tag. Expression varies depending on the nature of the gene.
Components:	The ORF clone is ion-exchange column purified and shipped in a 2D barcoded Matrix tube containing 10ug of transfection-ready, dried plasmid DNA (reconstitute with 100 ul of water).
Reconstitution Method:	<ol style="list-style-type: none">1. Centrifuge at 5,000xg for 5min.2. Carefully open the tube and add 100ul of sterile water to dissolve the DNA.3. Close the tube and incubate for 10 minutes at room temperature.4. Briefly vortex the tube and then do a quick spin (less than 5000xg) to concentrate the liquid at the bottom.5. Store the suspended plasmid at -20°C. The DNA is stable for at least one year from date of shipping when stored at -20°C.
RefSeq:	NM_001004329.1 , NP_001004329.1
RefSeq Size:	2722 bp
RefSeq ORF:	1020 bp
Locus ID:	440097
UniProt ID:	Q6ZNG2
Cytogenetics:	12q12
Protein Families:	ES Cell Differentiation/IPS