

## Product datasheet for **RG224636**

### SERINC5 (NM\_178276) Human Tagged ORF Clone

#### Product data:

Product Type:	Expression Plasmids
Product Name:	SERINC5 (NM_178276) Human Tagged ORF Clone
Tag:	TurboGFP
Symbol:	SERINC5
Synonyms:	C5orf12; TPO1
Mammalian Cell Selection:	Neomycin
Vector:	pCMV6-AC-GFP (PS100010)
E. coli Selection:	Ampicillin (100 ug/mL)
ORF Nucleotide Sequence:	>RG224636 representing NM_178276 Red=Cloning site Blue=ORF Green=Tags(s)

TTTTGTAATACGACTCACTATAGGGCGGCCGGAATTCGTCGACTGGATCCGGTACCGAGGAGATCTGCC  
GCC**CGATCGCC**

ATGTCAGCTCAGTGTGCGGGCCAGCTGGCCTGCTGCTGTGGGTCTGCAGGCTGCTCTCTGCTGTG  
ATTGCTGCCCCAGGATTCGGCAGTCCCTCAGCACCCGCTTCATGTACGCCCTCTACTTCATTCTGGTCGT  
CGTCTCTGCTGCATCATGATGTCAACAACCGTGGCTCACAAGATGAAAGAGCACATTCTTTTTTTGAA  
GATATGTGTAAGGCATTAAAGCTGGTACACCTGTGAGAAGCTGGTGGGATATTCTGCCGTGTATAGAG  
TCTGTTTTGGAATGGCTTGTCTTCTTATCTTCTGTCTACTGACCTTAAAAATCAACAACAGCAAAG  
TTGTAGAGCTCATATTCACAATGGCTTTTGGTTCTTAAACTTCTGCTGTTGGGGCCATGTGCTCAGGA  
GCTTTCTTCAATCCAGATCAGGACACCTTTCTGAACGCCTGGCGCTATGTGGGAGCCGTCGGAGGCTTCC  
TCTTCATTGGCATCCAGCTCCTCCTGCTCGTGGAGTTTGACATAAGTGGAAACAAGAACTGGACAGCAGG  
CACAGCCAGTAACAAGCTGTGGTACGCCTCCCTGGCCCTGGTACGCTCATCATGATTCCATTGCCACT  
GGAGGCTTGGTTTTGATGGCAGTGTATACACAGAAAGACAGCTGCATGGAAAACAAAATTCTGCTGG  
GAGTAAATGGAGGCTGTGCCTGCTTATCATTGGTAGCCATCTCACCTGGGTCCAAAATCGACAGCC  
ACACTCGGGCTCTTACAATCAGGGTCTAAGCTGCTATGTACCTACCTCACCTCTCAGCTCTGTCC  
AGCAAACCTGCAGAAGTAGTTCTAGATGAACATGGGAAAAATGTTACAATCTGTGTGCCTGACTTTGGTC  
AAGACCTGTACAGAGATGAAAACCTGGTACTATACTGGGACCAGCCTCTTAATCGGATGTATCTTGT  
TTCATGTTTTGACATCAACAACAAGATCGAGTTCTGACGCTCTGCAGGGGCGATACGAGCTCCTGAATTG  
GAGATAGCTCGCTGTTGTTTTGCTTCAGTCTGGTGGAGAGGACTGAAGAGCAGCAGCCGGGAAGG  
AGGGACCAGGGTCATTTATGACGAGAAGAAAGGCACCGTCTACATCTACTCCTACTTCCACTTCGTGTT  
CTTCTAGCTTCCCTGTATGTGATGATGACCGTACCAACTGTTCAACCATGTAAGAAGTGCTTTTAC  
CTCCTGCCA

**ACGCGT**ACGCGGCCGCTCGAG - GFP Tag - GTTTAA



[View online »](#)

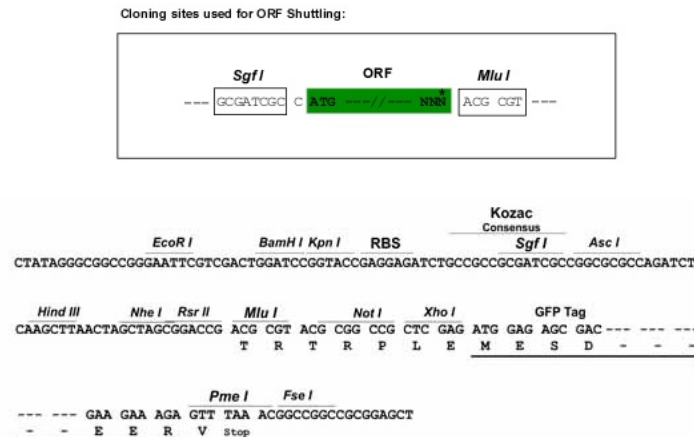
**Protein Sequence:** >RG224636 representing NM\_178276  
Red=Cloning site Green=Tags(s)

MSAQCCAGQLACCCGSAGCSLCCDCCPRIRQSLSTRFMYALYFILVVVLCIMMSTTVAHKMKEHIPFFE  
 DMCKGIKAGDTEKLVGYSAVYRVCFGMACFFFIFCLLTLKINNSKSCRAHIHNGFWFFKLLLLGAMCSG  
 AFFIPDQDTFLNAWRYVAVGGFLFIGIQLLLLVEFAHKWKNWTAGTASNKLWYASLALVTLIMYSIAT  
 GGLVLMVAVFYTQKDSMCENKILLGVNGLCLLISLVAISPWWQNRQPHSGLLQSGVISCYVTYLTFALS  
 SKPAEVLVDEHGKNVTICVPDFGQDLYRDENLVTILGTSLLIGCILYSCLTSTTRSSDALQGRYAAPEL  
 EIARCCFCFSPGGEDTEEQPGKEGPRVIYDEKKGTVYIYSYHFVFFLASLYVMMVTNWFNHVRSAPHL  
 LLP

TRTRPLE - GFP Tag - V

**Restriction Sites:** SgfI-MluI

**Cloning Scheme:**



**ACCN:** NM\_178276

**ORF Size:** 1269 bp

**OTI Disclaimer:** The molecular sequence of this clone aligns with the gene accession number as a point of reference only. However, individual transcript sequences of the same gene can differ through naturally occurring variations (e.g. polymorphisms), each with its own valid existence. This clone is substantially in agreement with the reference, but a complete review of all prevailing variants is recommended prior to use. [More info](#)

**OTI Annotation:** This clone was engineered to express the complete ORF with an expression tag. Expression varies depending on the nature of the gene.

**Components:** The ORF clone is ion-exchange column purified and shipped in a 2D barcoded Matrix tube containing 10ug of transfection-ready, dried plasmid DNA (reconstitute with 100 ul of water).

**Reconstitution Method:**

1. Centrifuge at 5,000xg for 5min.
2. Carefully open the tube and add 100ul of sterile water to dissolve the DNA.
3. Close the tube and incubate for 10 minutes at room temperature.
4. Briefly vortex the tube and then do a quick spin (less than 5000xg) to concentrate the liquid at the bottom.
5. Store the suspended plasmid at -20°C. The DNA is stable for at least one year from date of shipping when stored at -20°C.

**RefSeq:** [NM\\_178276.7](#)

**RefSeq Size:** 1907 bp

**RefSeq ORF:** 1272 bp

**Locus ID:** 256987

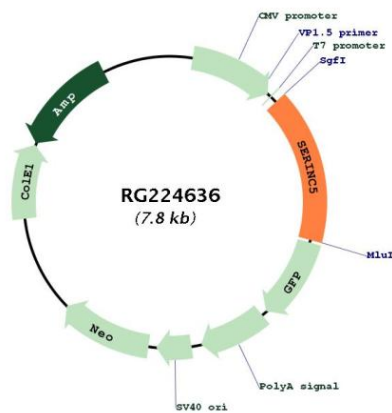
**UniProt ID:** [Q86VE9](#)

**Cytogenetics:** 5q14.1

**Protein Families:** Transmembrane

**Gene Summary:** Restriction factor required to restrict infectivity of lentiviruses, such as HIV-1: acts by inhibiting an early step of viral infection. Impairs the penetration of the viral particle into the cytoplasm (PubMed:26416733, PubMed:26416734). Enhances the incorporation of serine into phosphatidylserine and sphingolipids. May play a role in providing serine molecules for the formation of myelin glycosphingolipids in oligodendrocytes (By similarity).[UniProtKB/Swiss-Prot Function]

### Product images:



Circular map for RG224636