

Product datasheet for **RG224587**

PPIG (NM_004792) Human Tagged ORF Clone

Product data:

Product Type:	Expression Plasmids
Product Name:	PPIG (NM_004792) Human Tagged ORF Clone
Tag:	TurboGFP
Symbol:	PPIG
Synonyms:	CARS-Cyp; CYP; SCAF10; SRCyp
Mammalian Cell Selection:	Neomycin
Vector:	pCMV6-AC-GFP (PS100010)
E. coli Selection:	Ampicillin (100 ug/mL)



[View online »](#)

**ORF Nucleotide
Sequence:**

>RG224587 representing NM_004792
 Red=Cloning site Blue=ORF Green=Tags(s)

TTTTGTAATACGACTCACTATAGGGCGGCCGGAATTCGTCGACTGGATCCGGTACCGAGGAGATCTGCC
 GCC**CGCATCGCC**

ATGGGAATAAAGTTCAACGTCCTCGATGTTTTTTTACATTGCCATTAACAATCAACCTGCTGGAAGAG
 TTGCTTTGAATTATTTTCTGATGTGTGCCCAAACATGCGAGAACTTTCGTTGTCTTTGTACAGGTGA
 AAAGGGGACCGGAAATCAACTCAGAAACCATTACATTATAAGAGTTGTCTCTTTTACAGAGTTGTCAAG
 GATTTTATGGTTCAAGGTGGTACTTCAGTGAAGGAAATGGACGAGGAGGGGAATCTATCTATGGAGGAT
 TTTTTGAAGACGAGAGTTTCGCTGTTAAACACAACAAAGAATTTCTTTGTCAATGGCCAACAGAGGGAA
 GGATACAAATGGTTCACAGTTCTTCATAACAACGAAACCAACTCCTCATTTAGATGGGCATCATGTTGTT
 TTTGGACAAGTAATCTCTGGTCAAGAAGTTGTAAGAGAGATTGAAAACAGAAAACAGATGCAGCTAGCA
 AACCGTTTGGGAGGTACGGATACTCAGTTGTGGAGAGCTGATCCCAAATCTAAAGTTAAGAAAGAAGA
 AAAGAAAAGGCATAAATCATCATCTTCTCTCTCTCATCTAGTGACTCAGATAGCTCAAGTGATTCT
 CAGTCCTCTTCTGATTCTCTGATTCCGAAAGTCTACTGAAGAGAAATCAAAGAAAAGAAAAAGAAAC
 ATCGGAAAAATCCCGAAAACACAAGAAAGAAAAGAAAAGCGAAAAGAAAAGCAAGAAGAGTGCATCTAG
 TGAGAGTGAAGCTGAAAACTTGAAGCACAACCCAGTCTACTGTCCGTCCAGAAGAGATCCCTCTATA
 CCTGAAAATAGATTCTAATGAGAAAAAGTCTCTAAAGCTGATGAGAAGGAAAGGAAAAACAGAGAGA
 GAGAAAGGAAAGAGAGTGTAAATCCACCTAACTCCCAGCTGCTTCATACCAGAGACGACTTTTAGTTAC
 TAGATCTGGCAGGAAAATTAAGGAAGAGGACCAAGGCGTTATCGAACTCCTTCCAGATCCAGATCAAGG
 GATCGTTTCAGACGTAGTGAGACTCCTCCACATTGGAGGCAAGAGATGCAGAGAGCTCAAAGAATGAGGG
 TATCAAGTGGTAAAAGATGGATCAAGGGGGATAAGAGTGAGTTGAATGAAATAAAAGAAAATCAGAGAAG
 TCCAGTTAGAGTAAAAGAGAGAAAAATAACAGATCACAGGAATGTATCTGAGAGTCCAAACAGAAAAAT
 GAAAAGGAGAAGAAAGTTAAAGACCATAAATCTAACAGCAAAGAGAGAGACATCAGAAGAAATTCAGAAA
 AAGATGACAAGTATAAAAACAAAGTGAAGAAAAGGGCCAAATCTAAAAGTAGGAGTAAGAGCAAAGAGAA
 ATCAAAGAGTAAAGAAAGAGATTCAAAACATAATAGAAATGAAGAAAAGAGGATGAGGTCAAGGAGTAAA
 GGAAGGGATCATGAAAATGTTAAAGAAAAGAAAAGCAGTCTGATTCTAAAGGAAAAGATCAGGAAAAGGA
 GTAGAAGTAAAGAGAAGTCTAACAGTTAGAATCAAAGAGTAATGAGCATGATCACAGTAAAAGTAAAGGA
 AAAGGATAGACGCGCACAAATCCAGGAGTAGAGAATGTGATATAACTAAAGGTAACACAGTTATAATAGC
 AGAACAAAGAGAACGAAGCAGAAGTAGGGACAGAAGCAGAAGAGTCCGATCAAGAACCATGACAGAGATC
 GCAGCAGAAGCAAGGAGTACCATAGATACAGAGAACAGGAATACAGGAGAAGAGGACGGTACGAAGCCG
 AGAGAGAGAACAACACCAGGAAGTCAAGAAATAAAGATAGGAGGAGAAGGAGGAGAGACTCACGGAGC
 TCAGAGAGAGAAGAAAGTCAAAGCAGAAACAAAGACAAATACAGAAACCAAGAGAGTAAGAGCTCACACA
 GAAAAGAAAATTCGAGAGTGAGAAAAGAAATGACTCTAAAAGTCGTGATCATAATAGCTCAAAATAACAG
 CAGGGAAGAAAAGGCTGATAGAGATCAAAGTCCCTTCTCAAAAATAAAACAAAGCAGTCAAGGACAATGAA
 TTAAGTCCCTCATGTTGAAAAATAAGGAGGATGAGAAGATCAGATCCTCAGTGGAAAAAGAAAACCAA
 AATCAAAGGTCAAGAAAATGACCATGTACATGAAAAAAAATAAAAAATTTGATCATGAATCAAGCCCTGG
 AACAGATGAAGACAAAAGCGGA

ACGCGTACGCGGCCGCTCGAG – GFP Tag – GTTTAA

Protein Sequence: >RG224587 representing NM_004792
Red=Cloning site Green=Tags(s)

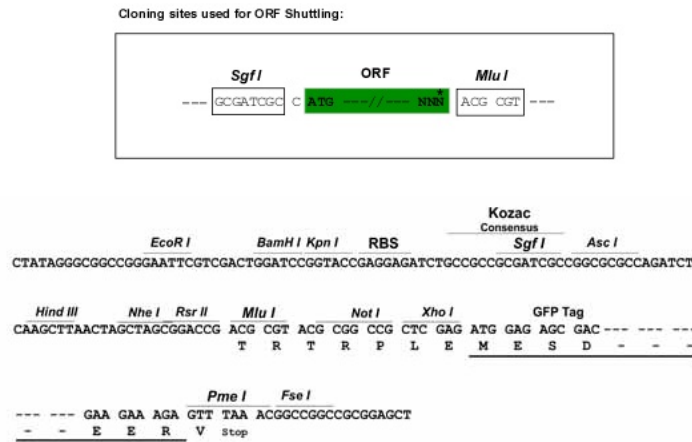
```

MGIKVQRPRCFFDIAINNQPAGRVVVFELFSDVCPKTCENFRCLCTGEKGTGKSTQKPLHYKSCLFHRVVK
DFMVQGGDFSEGNGRGGESIYGGFFEDESFAVKHNKEFLLSMANRGKDTNGSQFFITTKPTPHLDGHHVV
FGQVISGQEVVREIENQKTDAAASKPFAEVRILSCGELIPKSKVKKEEKKRHKSSSSSSSSSDSDSSSDS
QSSSDSDSESAATEEKSKKRKKKHKRKNRSRKHKKKEKKRKKSKKSASSEEAENLEAQPQSTVRPEEIPPI
PENRFLMRKSPPKADEKERKNRERERERECNPPNSQPASYQRLLVTRSGRKIKGRGPRRYRTPSRSRSR
DRFRRSETPPHWRQEMQRAQRMVSSGERWIKGDKSELNEIKENQRSPVRVKERKIDHRNVSESPNRKN
EKEKKVKDHSKNSKERDIRRNSEKDDKYKNKVKKRAKSKSRKSKEKSKSKERDSKHNRNEEKMRMSRSK
GRDHENVEKEKQSDSKGKDQERSRKEKSKQLESKSNEHDHKSKEKDRRAQSRRECDITKGKHSYNS
RTRERSRSRDRSRVRSRTHDRDRSRSEYHYREQEYRRRGRSRERRTPPGSRSKDRRRRRRDRSR
SEREESQSRNKDKYRNQESKSSHRKENSESEKRMYSKSRDHNSNNSREKKADRQSPFSKIKQSSQDNE
LKSSMLKNKEDEKIRSSVEKENQKSKGQENDHVHEKNKFDHESSPGTDEDKSG
    
```

TRTRPLE - GFP Tag - V

Restriction Sites: SgfI-MluI

Cloning Scheme:



ACCN: NM_004792

ORF Size: 2262 bp

OTI Disclaimer: The molecular sequence of this clone aligns with the gene accession number as a point of reference only. However, individual transcript sequences of the same gene can differ through naturally occurring variations (e.g. polymorphisms), each with its own valid existence. This clone is substantially in agreement with the reference, but a complete review of all prevailing variants is recommended prior to use. [More info](#)

OTI Annotation: This clone was engineered to express the complete ORF with an expression tag. Expression varies depending on the nature of the gene.

Components: The ORF clone is ion-exchange column purified and shipped in a 2D barcoded Matrix tube containing 10ug of transfection-ready, dried plasmid DNA (reconstitute with 100 ul of water).

Reconstitution Method:

1. Centrifuge at 5,000xg for 5min.
2. Carefully open the tube and add 100ul of sterile water to dissolve the DNA.
3. Close the tube and incubate for 10 minutes at room temperature.
4. Briefly vortex the tube and then do a quick spin (less than 5000xg) to concentrate the liquid at the bottom.
5. Store the suspended plasmid at -20°C. The DNA is stable for at least one year from date of shipping when stored at -20°C.

RefSeq: [NM_004792.3](#)

RefSeq Size: 2717 bp

RefSeq ORF: 2265 bp

Locus ID: 9360

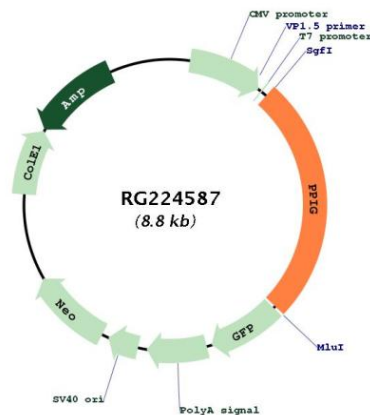
UniProt ID: [Q13427](#)

Cytogenetics: 2q31.1

Domains: pro_isomerase

Gene Summary: PPIase that catalyzes the cis-trans isomerization of proline imidic peptide bonds in oligopeptides and may therefore assist protein folding (PubMed:20676357). May be implicated in the folding, transport, and assembly of proteins. May play an important role in the regulation of pre-mRNA splicing.[UniProtKB/Swiss-Prot Function]

Product images:



Circular map for RG224587