

## Product datasheet for **RG224556**

### Fibrinogen alpha chain (FGA) (NM\_021871) Human Tagged ORF Clone

#### Product data:

Product Type:	Expression Plasmids
Product Name:	Fibrinogen alpha chain (FGA) (NM_021871) Human Tagged ORF Clone
Tag:	TurboGFP
Symbol:	FGA
Synonyms:	Fib2
Mammalian Cell Selection:	Neomycin
Vector:	pCMV6-AC-GFP (PS100010)
E. coli Selection:	Ampicillin (100 ug/mL)



[View online »](#)

**ORF Nucleotide Sequence:**

>RG224556 representing NM\_021871  
 Red=Cloning site Blue=ORF Green=Tags(s)

TTTTGTAATACGACTCACTATAGGGCGGCCGGAATTCGTCGACTGGATCCGGTACCGAGGAGATCTGCC  
 GCC**CGCATCGCC**

ATGTTTTCCATGAGGATCGTCTGCCTGGTCTAAGTGTGGTGGGCACAGCATGGACTGCAGATAGTGGTG  
 AAGGTGACTTTCTAGCTGAAGGAGGAGGCGTGCCTGGCCCAAGGTTGTGGAAAGACATCAATCTGCCTG  
 CAAAGATTCAGACTGGCCCTTCTGCTCTGATGAAGACTGGAACACAAATGCCCTTCTGGCTGCAGGATG  
 AAAGGGTTGATTGATGAAGTCAATCAAGATTTTACAAACAGAATAAATAAGCTCAAAAATCACTATTTG  
 AATATCAGAAGAACAATAAGGATTTCTATTGTTGACCACTAATAATAATGGAAATTTTGAGAGGCGATTT  
 TTCCTCAGCCAATAACCGTGATAATACCTACAACCGAGTGTGAGAGGATCTGAGAAGCAGAATTGAAGTC  
 CTGAAGCGCAAAGTCATAGAAAAAGTACAGCATATCCAGCTTCTGCAGAAAAATGTTAGAGCTCAGTTGG  
 TTGATATGAAACGACTGGAGGTGGACATTGATATTAAGATCCGATCTTGTGAGGGTTCATGCAGTAGGGC  
 TTTAGCTCGTGAAGTAGATCTGAAGGACTATGAAGATCAGCAGAAGCAACTTGAACAGGTCATTGCCAAA  
 GACTTACTTCCCTCTAGAGATAGGCAACACTTACCACTGATAAAAATGAAACCAGTTCAGACTTGGTTC  
 CCGGAAATTTTAAAGGCCAGCTTCAAGAAGTACCCCAAGAGTGGAAAGGCATTAACAGACATGCCCGAGAT  
 GAGAATGGAGTTAGAGAGACCTGGTGAAATGAGATTACTCGAGGAGGCTCCACCTTTATGGAACCGGA  
 TCAGAGACGGAAGCCCAAGAACCTAGCAGTGTGGAAGCTGGAACCTGGGAGCTCTGGACCTGGAA  
 GTACTGGAACCGAAACCTGGGAGCTCTGGGACTGGAGGGACTGCAACCTGGAACCTGGGAGCTCTGG  
 ACCTGGAAGTACTGGAAGCTGGAACCTGGGAGCTCTGGAACCTGGAAGTACTGGAACCAAAACCTGGG  
 AGCCCTAGACCTGGTAGTACCGAACCTGGAATCCTGGCAGCTCTGAACGCGGAAGTGTGGGCAGATGGA  
 CCTCTGAGAGCTCTGTATCTGGTAGTACTGGACAATGGCACTCTGAATCTGGAAGTTTTAGGCCAGATAG  
 CCCAGGCTCTGGGAACGCGAGGCTAACACCCAGACTGGGGCACATTTGAAGAGGTGTGAGGAAATGTA  
 AGTCCAGGGACAAGGAGAGAGTACCACACAGAAAACTGGTCACTTCTAAAGGAGATAAAGAGCTCAGGA  
 CTGGTAAAGAGAAGTCACTCTGGTAGCACAACCACCGCTCGTTTCTGCTCTAAAACCGTTACTAA  
 GACTGTTATTGGTCTGATGGTCAAAAGAAGTTACAAAGAAGTGGTACCTCCGAAGATGGTTCTGAC  
 TGTCCCGAGGCAATGGATTTAGGCACATTGTCTGGCATAGGACTCTGGATGGTTCCGCCATAGGCACC  
 CTGATGAAGCTGCCTTCTCGACACTGCCTCAACTGGAACCAATCCCAGGTTTCTTCACTATGTT  
 AGGAGAGTTTGTGAGTACTGAGTCTAGGGCTCAGAACTGGCATCTTCAAAATACAAAGGAATCC  
 AGTTCTCATCACCTGGGATAGTGAATCCCTTCCCGTGGTAAATCTTCAAGTTACAGCAAACAATTTA  
 CTAGTAGCAGGTTACAACAGAGGAGACTCCACATTTGAAAGCAAGAGCTATAAAATGGCAGATGAGGC  
 CGGAAGTGAAGCCGATCATGAAGGAACACATAGCACCAAGAGAGGCCATGCTAAATCTCGCCCTGTGAGA  
 GGTATCCACACTTCTCTTTGGGAAGCCTTCCCTGTCCCC

AG**CGGACCG**ACGCGTACGCGGCCGCTCGAG - GFP Tag - GTTTAA

**Protein Sequence:**

>RG224556 representing NM\_021871  
 Red=Cloning site Green=Tags(s)

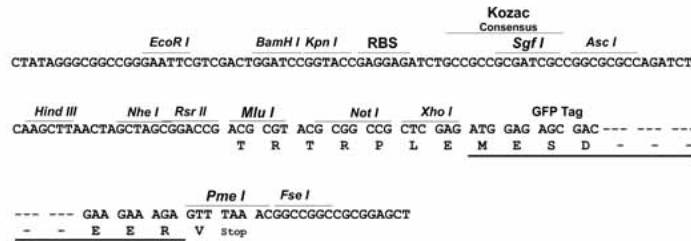
MFSMRIVCLVLSVVGTAWTADSGEGDFLAEGGGVGRPRVVERHQSACKDSDWPFCSEDEDWNYKCPSGCRM  
 KGLIDEVNDQFTNRINKLNKNSLFEYQKNNKDSHSLTTNIMEILRGDFSSANNRDNTYNRVSEDLRSRIEV  
 LKRKVIKQVHIQLLQKNVRAQLVDMKRLEVDIDIKIRSCRGSCSRALAREVDLKDYEDQKQLEQVIAK  
 DLLPSRDRQHLPLIKMKPVPDLVPGNFKSQLQKVPPEWKALTDMPQMRMELERPGGNEITRGGSTSYGTG  
 SETESPRNPSSAGSWNSGSSGPGSTGNRNPSSGTTGGTATWKPSSGPGSTGWSNSGSSGTTGNQNP  
 SPRPGSTGTWNPSSERGSAGHWTSESSVSGSTQWHSESGSFRPDPGSGNARPNPDWGTFFEEVSGNV  
 SPGTRREYHTEKLVTSKGDKELRTGKEKVTSGSTTTTRRSCSKTVTKTVIGPDGHKEVTKEVVTSEDGSD  
 CPEAMDLGTLGIGTLDGFRHRHPDEAAFFDASTGKTFPGFFSPMLGEFVSETESRGSSEGIPTNTKES  
 SSHHPGIAEFPSRGKSSYSKQFTSSTSYNRGDSFESKSYKMADEAGSEADHEGTHSTKRGHAKSRPVR  
 GIHTSPLGKPSLSP

SGP**TRRRLE** - GFP Tag - V

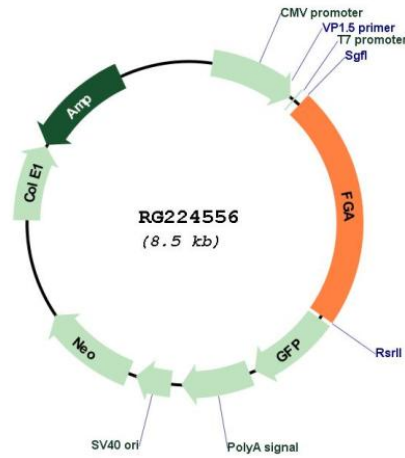
Restriction Sites: SgfI-RsrII

Cloning Scheme:

Cloning sites used for ORF Shuttling:



Plasmid Map:



ACCN: NM\_021871

ORF Size: 1932 bp

<b>OTI Disclaimer:</b>	The molecular sequence of this clone aligns with the gene accession number as a point of reference only. However, individual transcript sequences of the same gene can differ through naturally occurring variations (e.g. polymorphisms), each with its own valid existence. This clone is substantially in agreement with the reference, but a complete review of all prevailing variants is recommended prior to use. <a href="#">More info</a>
<b>OTI Annotation:</b>	This clone was engineered to express the complete ORF with an expression tag. Expression varies depending on the nature of the gene.
<b>Components:</b>	The ORF clone is ion-exchange column purified and shipped in a 2D barcoded Matrix tube containing 10ug of transfection-ready, dried plasmid DNA (reconstitute with 100 ul of water).
<b>Reconstitution Method:</b>	<ol style="list-style-type: none"><li>1. Centrifuge at 5,000xg for 5min.</li><li>2. Carefully open the tube and add 100ul of sterile water to dissolve the DNA.</li><li>3. Close the tube and incubate for 10 minutes at room temperature.</li><li>4. Briefly vortex the tube and then do a quick spin (less than 5000xg) to concentrate the liquid at the bottom.</li><li>5. Store the suspended plasmid at -20°C. The DNA is stable for at least one year from date of shipping when stored at -20°C.</li></ol>
<b>RefSeq:</b>	<a href="#">NM_021871.4</a>
<b>RefSeq Size:</b>	2210 bp
<b>RefSeq ORF:</b>	1935 bp
<b>Locus ID:</b>	2243
<b>UniProt ID:</b>	<a href="#">P02671</a>
<b>Cytogenetics:</b>	4q31.3
<b>Protein Families:</b>	Druggable Genome, Secreted Protein
<b>Protein Pathways:</b>	Complement and coagulation cascades
<b>Gene Summary:</b>	This gene encodes the alpha subunit of the coagulation factor fibrinogen, which is a component of the blood clot. Following vascular injury, the encoded preproprotein is proteolytically processed by thrombin during the conversion of fibrinogen to fibrin. Mutations in this gene lead to several disorders, including dysfibrinogenemia, hypofibrinogenemia, afibrinogenemia and renal amyloidosis. Alternative splicing results in multiple transcript variants, at least one of which encodes an isoform that undergoes proteolytic processing. [provided by RefSeq, Jan 2016]