

Product datasheet for **RG224547**

LILRB1 (NM_001081637) Human Tagged ORF Clone

Product data:

Product Type:	Expression Plasmids
Product Name:	LILRB1 (NM_001081637) Human Tagged ORF Clone
Tag:	TurboGFP
Symbol:	LILRB1
Synonyms:	CD85J; ILT-2; ILT2; LIR-1; LIR1; MIR-7; MIR7; PIR-B; PIRB
Mammalian Cell Selection:	Neomycin
Vector:	pCMV6-AC-GFP (PS100010)
E. coli Selection:	Ampicillin (100 ug/mL)



[View online »](#)

ORF Nucleotide Sequence:

>RG224547 representing NM_001081637
 Red=Cloning site Blue=ORF Green=Tags(s)

TTTTGTAATACGACTCACTATAGGGCGGCCGGAATTCGTCGACTGGATCCGGTACCGAGGAGATCTGCC
 GCC**CGGATCGCC**

ATGACCCCATCCTCACGGTCTGATCTGTCTCGGGCTGAGTCTGGGCCAGGACCCACGTGCAGGCAG
 GGCACCTCCCAAGCCACCCTCTGGGCTGAACCAAGGCTCTGTGATCACCAAGGGAGTCCCTGTGACCCCT
 CAGGTGTCAGGGGGCCAGGAGACCCAGGAGTACCGTCTATATAGAGAAAAGAAAACAGCACTCTGGATT
 ACACGGATCCCACAGGAGCTTGTGAAGAAGGGCCAGTTCCCCATCCCATCCATCACCTGGGAACATGCAG
 GGCGGTATCGCTGTTACTATGGTAGCGACTGCAGGCCGCTCAGAGAGCAGTGACCCCTGGAGCTGGT
 GGTGACAGGAGCTACATCAAACCCACCCTCTCAGCCAGCCAGCCCGTGGTGAACCTCAGGAGGGAAT
 GTAATCCTCCAGTGTGACTCACAGGTGGCATTGATGGCTTCAGTCTGTGAAGGAAGGAGAAGATGAAC
 ACCACAATGCCTGAACCTCCAGCCCATGCCCGTGGTCTGCCGCGCCATCTTCTCCGTGGGCCCGT
 GAGCCCGAGTCGAGGTGGTGGTACAGGTGCTATGCTTATGACTCGAAGTCTCCCTATGAGTGGTCTCTA
 CCCAGTATCTCCTGGAGCTCCTGGTCTAGGTGTTTCTAAGAAGCCATCACTCTCAGTGCAGCCAGGTC
 CTATCGTGGCCCTGAGGAGACCCTGACTCTGCAGTGTGGCTCTGATGCTGGCTACAACAGATTTGTTCT
 GTATAAGGACGGGGAACGTGACTTCTTCAGCTCGCTGGCGCACAGCCCAAGGCTGGGCTCTCCAGGCC
 AACTTCACCTGGGCCCTGTGAGCCGCTCTACGGGGCCAGTACAGATGCTACGGTGCACACAACCTCT
 CCTCCGAGTGGTGGCCCGCCAGCCCGTGGACATCCTGATCGCAGGACAGTTCTATGACAGAGTCTC
 CCTCTCGGTGCAGCCGGGCCACGGTGGCTCAGGAGAGAACGTGACCCATGGCGTAAAGTCAACGTACC
 TGGATGCAAAATTTCTTCTGACCAAGGAGGGGGCAGCTGATGACCCATGGCGTAAAGTCAACGTACC
 AATCTCAAAAATACCAGGCTGAATTTCCCATGGTCTGTGACCTCAGCCATGCGGGGACCTACAGGTG
 CTACGGCTCACAGAGCTCAAACCTACCTGCTGACTCACCCAGTGACCCCTGGAGCTCGTGGTCTCA
 GGACCGTCTGGGGCCCGAGTCCCGACAACAGGCCCACTCCACATCTGCAGGCCCTGAGGACCAGC
 CCCTACCCCCACCGGTCGGATCCCCAGAGTGGTCTGGGAAGGCACCTGGGGTTGTGATCGGCATCTT
 GGTGGCCGTATCCTACTGCTCCTCCTCCTCCTCCTCCTCCTCCTCCTCCTCCTCCTCCTCCTCCTCCTC
 AAACACTGGACATCGACCCAGAGAAAGGCTGATTTCAACATCCTGCAGGGGCTGTGGGGCCAGAGCCCA
 CAGACAGAGGCCGTCAGTGGAGTCCAGCCAGTCCGATGCCAGGAAGAAAACCTCTATGCTGCCGT
 GAAGCACACAGCCTGAGGATGGGTGGAGTGGACTCGGCAGAGCCACACGATGAAGACCCCGAG
 GCAGTGCAGTATGCCGAGGTGAAACACTCCAGACCTAGGAGAGAAATGGCCTCTCCTCCTCCCCACTGT
 CTGGGGAATTCCTGGACAAAAGGACAGACAGGCGGAAGAGGACAGGCAGATGGACACTGAGGCTGCTGC
 ATCTGAAGCCCCCAGGATGTGACCTACGCCAGCTGCACAGCTTACCCTCAGACGGGAGGCAACTGAG
 CCTCCTCCATCCCAGGAAGGGCCCTCTCCAGCTGTGCCAGCATCTACGCCACTCTGGCCATCCAC

ACGCGTACGCGGGCCGCTCGAG - GFP Tag - GTTTAA

Protein Sequence:

>RG224547 representing NM_001081637
 Red=Cloning site Green=Tags(s)

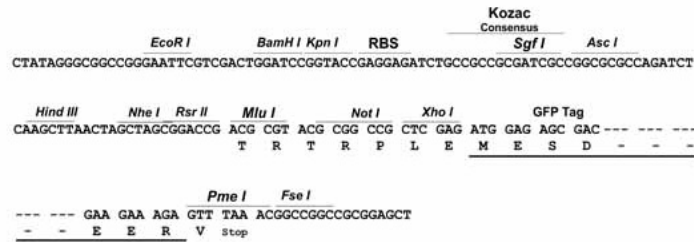
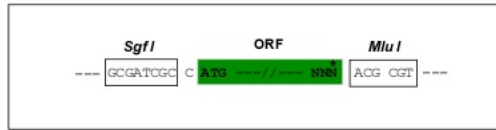
MTPILTVL ICLGLSLGPRTHVQAGHLPKPTLWAEPGSVITQGSPVTLRCQGGQETQEYRLYREKKTALWI
 TRIPQELVKKGFPIPSITWEHAGRYRCYYGSDTAGRSESSDPLELVVTGAYIKPTLSAQSPVNSGGN
 VILQCDSQVAFDGFSLCKEGEDHQPCLNSQPHARGSSRAIFSVGPVSPSRWWYRCYAYDSNSPYEWSL
 PSDLLELLVVLGVSKKPSLSVQPGPIVAPEETLTLQCGSDAGYNRFVLYKDGGERDFLQLAGAQPQAGLSQA
 NFRTLGPVRSYGGQYRCYGAHNLSSEWSAPSDPLDILIAQGFYDRVSLSVQPGPTVASGENVTLLCQSQG
 WMQTFLLTKEGAADDPWRLRSTYQSQYQAEFPMGPVTSAHAGTYRCYGSQSSKPYLLTHPSDPLELVVS
 GPSSGSSPTTGPSTSTAGPEDQPLTPTGSDPQSGLRHLGVVIGILVAVILL LLLLLLLFLILRHRRQG
 KHWTSTQRKADFQHPAGAVGPEPTDRGLQWRSSPAADAQEENLYAAVKHTQPEDGVEMDRQSPHDEDPQ
 AVTYAEVKHSRPRREMASPPSPLSGEFLDTKDRQAEEDRQMDTEAAASEAPQDVTYAQLHSLTLREATE
 PPSQEGPSPAVPSIYATLAIH

TRTRPLE - GFP Tag - V

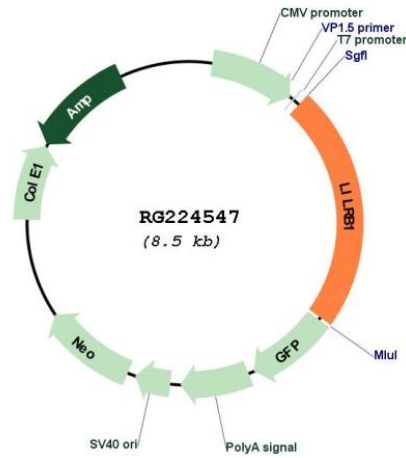
Restriction Sites: SgfI-MluI

Cloning Scheme:

Cloning sites used for ORF Shuttling:



Plasmid Map:



ACCN: NM_001081637

ORF Size: 1956 bp

OTI Disclaimer:	The molecular sequence of this clone aligns with the gene accession number as a point of reference only. However, individual transcript sequences of the same gene can differ through naturally occurring variations (e.g. polymorphisms), each with its own valid existence. This clone is substantially in agreement with the reference, but a complete review of all prevailing variants is recommended prior to use. More info
OTI Annotation:	This clone was engineered to express the complete ORF with an expression tag. Expression varies depending on the nature of the gene.
Components:	The ORF clone is ion-exchange column purified and shipped in a 2D barcoded Matrix tube containing 10ug of transfection-ready, dried plasmid DNA (reconstitute with 100 ul of water).
Reconstitution Method:	<ol style="list-style-type: none">1. Centrifuge at 5,000xg for 5min.2. Carefully open the tube and add 100ul of sterile water to dissolve the DNA.3. Close the tube and incubate for 10 minutes at room temperature.4. Briefly vortex the tube and then do a quick spin (less than 5000xg) to concentrate the liquid at the bottom.5. Store the suspended plasmid at -20°C. The DNA is stable for at least one year from date of shipping when stored at -20°C.
RefSeq:	NM_001081637.1 , NP_001075106.1
RefSeq Size:	2802 bp
RefSeq ORF:	1959 bp
Locus ID:	10859
UniProt ID:	Q8NHL6
Cytogenetics:	19q13.42
Protein Families:	Transmembrane
Gene Summary:	This gene is a member of the leukocyte immunoglobulin-like receptor (LIR) family, which is found in a gene cluster at chromosomal region 19q13.4. The encoded protein belongs to the subfamily B class of LIR receptors which contain two or four extracellular immunoglobulin domains, a transmembrane domain, and two to four cytoplasmic immunoreceptor tyrosine-based inhibitory motifs (ITIMs). The receptor is expressed on immune cells where it binds to MHC class I molecules on antigen-presenting cells and transduces a negative signal that inhibits stimulation of an immune response. It is thought to control inflammatory responses and cytotoxicity to help focus the immune response and limit autoreactivity. Multiple transcript variants encoding different isoforms have been found for this gene. [provided by RefSeq, Jul 2008]