

Product datasheet for **RG224515**

TAF6 (NM_139123) Human Tagged ORF Clone

Product data:

Product Type:	Expression Plasmids
Product Name:	TAF6 (NM_139123) Human Tagged ORF Clone
Tag:	TurboGFP
Symbol:	TAF6
Synonyms:	DKFZp781E21155; MGC:8964; TAF(II)80; TAF2E; TAFII70; TAFII80; TAFII85
Mammalian Cell Selection:	Neomycin
Vector:	pCMV6-AC-GFP (PS100010)
E. coli Selection:	Ampicillin (100 ug/mL)



[View online »](#)

ORF Nucleotide
Sequence:

>RG224515 representing NM_139123
Red=Cloning site Blue=ORF Green=Tags(s)

TTTTGTAATACGACTCACTATAGGGCGGCCGGGAATTCGTCGACTGGATCCGGTACCGAGGAGATCTGCC
GCC**CGGATCGCC**

ATGGCTGAGGAGAAGAAGCTGAAGCTTAGCAACACTGTGCTGCCCTCGGAGTCCATGAAGTGGTGGCTG
AATCCATGGGCATCGCCAGATTCAGGAGGAGACCTGCCAGCTGCTAACGGATGAGGATGCCTTGAAGTT
CATGCACATGGGGAAGCGGCAGAAAGCTCACACAGTGACATTGACTACGCCTTGAAGCTAAAGAATGTC
GAGCCACTCTATGGCTTCCACGCCAGGAGTTCATTCTTTCCGCTTCGCCTCTGGTGGGGCCGGGAGC
TTTACTTCTATGAGGAGAAGGAGGTTGATCTGAGCGACATCATCAATACCCCTCTGCCCCGGTGCCCT
GGACGTCTGCCTCAAAGCTCATTGGCTGAGCATCGAGGGCTGCCAGCCAGCTATCCCCGAGAACCCGCC
CCAGCTCCCAAAGAGCAACAGAAGGCTGAAGCCACAGAACCCTGAAGTCAGCCAAGCCAGGCCAGGAGG
AAGACGGACCCCTGAAGGGCAAAGGTCAAGGGGCCACCACAGCCACGGCAAAGGGAAAGAGAAGAAGGC
GCCGCCCTTGCTGGAGGGGGCCCTTGGGACTGAAGCCCGGAGCATCCACGAGTTGTCTGTGGAGCAG
CAGCTCTACTACAAGGAGATCACCGAGGCTGCGTGGGCTCCTGCGAGGCCAAGAGGGCGGAAGCCCTGC
AAAGCATTGCCACGGACCTGGACTGTATCAGATGCTGCCACGGTTCAGTACCTTATCTCGGAGGGGT
CCGTGTGAACGTGGTTCAGAACAACCTGGCCCTACTCATCTACCTGATGCGTATGGTGAAGCGCTGATG
GACAACCCACGCTCTATCTAGAAAAATACGTCCATGAGCTGATTCCAGCTGTGATGACCTGCATCGTGA
GCAGACAGTTGTGCTGCGACCAGATGTGGACAATCACTGGGCACTCCGAGACTTTGCTGCCCGCCTGGT
GGCCAGATCTGCAAGCATTTTAGCACAACTAACAACATCCAGTCCCGGATCACCAAGACCTTACC
AAGAGCTGGGTGGACGAGAAGACGCCCTGGACGACTCGTTATGGCTCCATCGCAGGCTTGGCTGAGCTGG
GACACGATGTTATCAAGACTCTGATTCTGCCCGGCTGCAGCAGGAAGGGGAGCGGATCCGAGTGTGCT
GGACGGCCCTGTGCTGAGCAACATTGACCGGATTGGAGCAGACCATGTGCAGAGCCTCCTGCTGAAACAC
TGTGCTCCTGTTCTGGCAAAGCTGCGCCACCGCTGACAATCAGGACGCCTATCGGGCAGAATTCGGGT
CCCTTGGGCCCTCCTCTGCTCCAGGTGGTCAAGGCTCGGGCCAGGCTGCTCTGCAGGCTCAGCAGGT
CAACAGGACCACTCTGACCATCACGCAGCCCCGGCCACGCTGACCTCTCGCAGGCCCCACAGCCTGGC
CCTCGACCCCTGGTGTGCTGAAGTTCCTGGCTCCATCGCACTTCTGTCCAGACACTGGTGTCTGCAC
GAGCGGCTGCCCCACCACAGCCTTCCCCTCCTCCAACCAAGTTTATTGTAATGTCATCGTCTCCAGCGC
CCCATCCACCCAGCAGGTCTGTCCCTCAGCACCTCGGCCCGGCTCAGGTTCCACCACCACTTCGCC
GTCACCACCACCGTCCCAGCGTGCAGCCATCGTCAAGTTGGTCTCCACCGCCACCACCGACCCCCCA
GCACTGCTCCCTCTGGTCTGGGAGTGTCCAGAAGTACATCGTGGTCTCACTTCCCCAACAGGGGAGGG
CAAAGGAGGCCCCACCTCCCATCTTCCAGTTCCTCCCCGGCATCGTCCCCGTCCTCCACTCAGCGGC
AGTGCCCTTTGTGGGGGAAGCAGGAGGCTGGGGACAGTCCCCTCCAGCTCCAGGGACTCCAAAAGCCA
ATGGCTCCAGCCAACTCCGGCTCCCCTCAGCCTGCTCCG

ACGCGTACGCGGCCGCTCGAG - GFP Tag - GTTTAA

Protein Sequence: >RG224515 representing NM_139123
 Red=Cloning site Green=Tags(s)

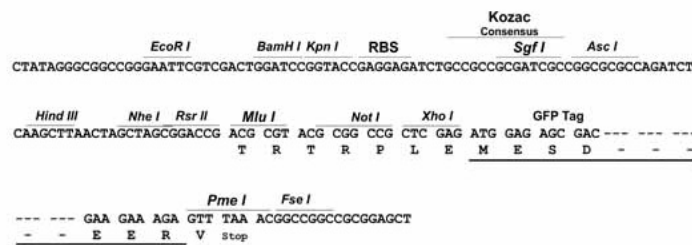
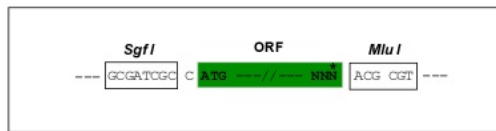
MAEEKKLLKLSNTVLPSESMKVVAESMGIAQIQEETCQLL TDEDALKFMHMGKRQKLTTSIDYALKLKNV
 EPLYGFHAQEFIPFRFASGGGREL YFYEEKEVDLSDIINTPLPRVPLDVCLKAHWLSIEGCQPAIPENPP
 PAPKEQQKAEATEPLKSAKPGQEEDGPLKKGQGATTADGKGKEKKAPLLEGA PLRLKPRSIHEL SVEQ
 QLYYKEITEACVGSCEAKRAEALQSIATDPGLYQMLPRFSTFI SEGVRVNVVQNNLALLIYLMRMVKALM
 DNPTLYLEKYVHELIPAVMTCIVSRQLCLRPDVDNHWALRDF AARLVAQICKHFSTTTNNIQSRITKFTT
 KSWVDEKTPWTTTRYGSIAGLAELGHDVIKTLILPRLQQEGERIRSVLDGPVLSNIDRIGADHVQSLLKHKH
 CAPVLAKLRPPPDNQDAYRAEFGSLGPLLCSQVVKARAQAALQAQQVNR TLTITQPRPTLTLSQAPQPG
 PRTPGLLKVPGSIALPVQTLVSARAAAPPQSPPTKFI VMSSSSAPSTQQVLSLSTSAPGSGSTTTSP
 VTTTVPSVQPIVKLVSTATTAPPSTAPSGPGSVQKYIVVSLPPTGEGKGGPTSHPSVPVPPASSPSLSG
 SALCGGKQEAGDSPPPAPGTPKANGSQPNSGSPQPAP

TRTRPLE - GFP Tag - V

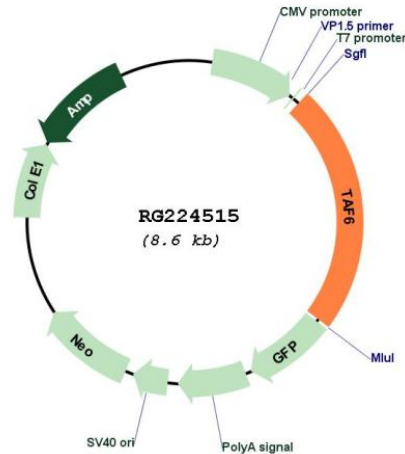
Restriction Sites: SgfI-MluI

Cloning Scheme:

Cloning sites used for ORF Shuttling:



Plasmid Map:



ACCN: NM_139123

ORF Size: 2001 bp

OTI Disclaimer: The molecular sequence of this clone aligns with the gene accession number as a point of reference only. However, individual transcript sequences of the same gene can differ through naturally occurring variations (e.g. polymorphisms), each with its own valid existence. This clone is substantially in agreement with the reference, but a complete review of all prevailing variants is recommended prior to use. [More info](#)

OTI Annotation: This clone was engineered to express the complete ORF with an expression tag. Expression varies depending on the nature of the gene.

Components: The ORF clone is ion-exchange column purified and shipped in a 2D barcoded Matrix tube containing 10ug of transfection-ready, dried plasmid DNA (reconstitute with 100 ul of water).

Reconstitution Method:

1. Centrifuge at 5,000xg for 5min.
2. Carefully open the tube and add 100ul of sterile water to dissolve the DNA.
3. Close the tube and incubate for 10 minutes at room temperature.
4. Briefly vortex the tube and then do a quick spin (less than 5000xg) to concentrate the liquid at the bottom.
5. Store the suspended plasmid at -20°C. The DNA is stable for at least one year from date of shipping when stored at -20°C.

RefSeq: [NM_139123.1](#), [NP_620835.1](#)

RefSeq Size:	2707 bp
RefSeq ORF:	2003 bp
Locus ID:	6878
Cytogenetics:	7q22.1
Domains:	TAF
Protein Families:	Transcription Factors
Protein Pathways:	Basal transcription factors
Gene Summary:	<p>Initiation of transcription by RNA polymerase II requires the activities of more than 70 polypeptides. The protein that coordinates these activities is transcription factor IID (TFIID), which binds to the core promoter to position the polymerase properly, serves as the scaffold for assembly of the remainder of the transcription complex, and acts as a channel for regulatory signals. TFIID is composed of the TATA-binding protein (TBP) and a group of evolutionarily conserved proteins known as TBP-associated factors or TAFs. TAFs may participate in basal transcription, serve as coactivators, function in promoter recognition or modify general transcription factors (GTFs) to facilitate complex assembly and transcription initiation. This gene encodes one of the smaller subunits of TFIID that binds weakly to TBP but strongly to TAF1, the largest subunit of TFIID. Alternative splicing results in multiple transcript variants. [provided by RefSeq, Jun 2010]</p>