

## Product datasheet for **RG224512**

### CUX1 (NM\_181552) Human Tagged ORF Clone

#### Product data:

Product Type:	Expression Plasmids
Product Name:	CUX1 (NM_181552) Human Tagged ORF Clone
Tag:	TurboGFP
Symbol:	CUX1
Synonyms:	CASP; CDP; CDP/Cut; CDP1; Clox; COY1; CUTL1; CUX; Cux/CDP; GDDI; GOLIM6; Nbla10317; p75; p100; p110; p200
Mammalian Cell Selection:	Neomycin
Vector:	pCMV6-AC-GFP (PS100010)
E. coli Selection:	Ampicillin (100 ug/mL)
ORF Nucleotide Sequence:	>RG224512 representing NM_181552 Red=Cloning site Blue=ORF Green=Tags(s)

TTTTGTAATACGACTCACTATAGGGCGGCCGGAATTCGTCGACTGGATCCGGTACCGAGGAGATCTGCC  
GCC**CGATCGCC**

ATGTTGTGCGTAGCCGGAGCCAGGTTGAAGAGAGAACTCGATGCCACCGCAACGGTATTGGCGAACCGGC  
AGGATGAAAGTGAGCAGTCCAGAAAGCGGCTTATCGAACAGAGCCGGGAGTTCAAGAAGAAGACTCCAGA  
GGATTTGCGCAAGCAGGTAGCGCCGCTGCTGAAGAGTTTCCAAGGAGAGATTGATGCACTGAGTAAAGA  
AGCAAGGAAGCTGAAGCAGCTTTCTTGAATGTCTACAAAAGATTGATTGACGTCCAGATCCCGTACCAG  
CTTTGGATCTCGGACAGCAACTCCAGCTCAAAGTGCAGCGCTGCACGATATTGAAACAGAGAACCAGAA  
ACTTAGGGAACTCTGGAAGAATACAACAAGGAATTTGCTGAAGTAAAAATCAAGAGGTTACGATAAAA  
GCACTTAAAGAGAAAATCCGAGAATATGAACAGACACTGAAGAACCAAGCCGAAACCATAGCTCTTGAGA  
AGGAACAGAAAGTTACAGAATGACTTTGCAGAAAAGGAGAGAAAGCTGCAGGAGACACAGATGTCCACCAC  
CTCAAAGCTGGAGGAAGCTGAGCATAAGGTTTCAGAGCCTACAAACAGCCCTGGAAAAAATCGAACAGAA  
TTATTTGACCTGAAAACCAAATACGATGAAGAACTACTGCAAAGGCCGACGAGATTGAAATGATCATGA  
CGGACCTTGAAAGGGCAAACAGAGGGCAGAGGTGGCTCAGAGAGAGGGCGGAGACCTTAAGGGAACAGCT  
CTCATCGGCAATCACTCCCTCCAGCTGGCCTCACAGATCCAGAAGGCACCAGACGTGGAGCAGGCCATA  
GAGGTGCTGACCCGCTCCAGCTAGAAAGTTGAGTTGGCCGCAAGGAGCGGGAGATCGCACAGCTGGTGG  
AGGACGTGCAGAGACTCCAGGCCAGCCTACCAAGCTGCGGGAGAATTCGGCCAGCCAGATCTCACAGCT  
TGAGCAGCAGCTGAGCGCAAAAACAGCACACTCAAACAATGGAAGAAAAACTCAAAGGCCAGGCTGAC  
TATGAAGAGGTGAAGAAAGAGCTGAACATTCTGAAGTCCATGGAGTTTGCACCGTCCGAGGGCGCTGGGA  
CACAGGATGCGGCCAAGCCCTGGAGGTGCTGTTGCTGGAGAAGAACCGCTCGCTGCAGTCCGAGAACGC  
CGCGCTGCGCATCTCAAACAGCGACCTGAGCGGGTCCAGCAGGAGGAAAGGGAAAGACCAGCCTGAAAGT  
CGGCGCCCGGATCTTTGCCGGCCCCCTCTTCTCAGTTGCCCGCAACCCGGGGGAGCAGGCTTCCA  
ATACTAATGGTACACACCAGTTCTACCAGCGGGTTAAGTCAAGACTTTTTTCAGCTCATCCCTGGCAAG



[View online »](#)

CCCCAGCCTACCCCTGGCTTCTACAGGAAAATTTGCACTAAACTCTTTCTCCAGCGGCAGCTAATGCAG  
TCCTTCTACTCCAAGGCTATGCAGGAAGCCGGAAGCACAAAGCATGATTTTTTCAACAGGTCCATACAGCA  
CAAACCTCATATCTTCCCAAAGTCCATTACAACAAAGCCAGATGTCAATGGCATGGCCCATCCCCAG  
CCAGTCAGAAAGTGCTGGGAGCGTCTCCGAGGGCGAGGAGATGGACACTGCAGAAATCGCCCGCAGGTC  
AAAGAGCAGCTGATTAAGCACAATATCGGACAACGTATTTTCGGACATTATGTGTTGGGACTGTCTCAAG  
GGTCCGTGAGCGAGATTCTGGCCCGGCCAAGCCATGGAATAAACTGACTGTTCTGTGGCAAGGAGCCATT  
TCACAAGATGAAACAGTTCCTCTCCGATGAGCAGAACATCCTGGCCCTCCGTAGCATCCAAGGCAGACAA  
AGAGAGAATCCAGGCCAGAGCCTGAACAGACTATTTTCAGGAAGTACCGAAACGAAGAAATGGGTCTGAAG  
GTAACATCACCACCCGGATCCGAGCCTCGGAGACTGGCTCTGATGAAGCCATCAAGTCCATCCTAGAGCA  
AGCCAAGAGGGAGCTCCAAGTGCAGAAAATGCAGAGCCGGCCAGCCTTCTCCGCATCCGGCAGCGGG  
AACTCTGATGACGCCATCCGCTCCATCTGCAGCAAGCCCGCCGGGAGATGGAGGCCAGCAGGCTGCC  
TCGACCCTGCCTTAAAGCAGGCACCACTGTCCAGAGTGACATCACCATCCTACCCCCAAGCTTCTGTC  
CACCTCGCCATGCCACCGTGTCCAGCTACCCACCTCTCGCCATCTCCCTGAAGAAGCCCTCCGCAGCT  
CCTGAGGCCGGTGCCTCTGCTCTGCCGAACCCCCCGGCCCTCAAAAAGGAGGCCAGGACGCCCCCGGGC  
TGGACCCCGAGGAGCAGCCGATTGTGACAAGGGGTCTGAGACAGGTGAAAAATGAGGTGGGCCGAG  
CGGTGCCTGGAAGGACCACTGGTGGAGCGCGTGCAGCCGGAGAGAAGAAATGCCGCCTCCTCCGAGGAG  
GCCAAGGCCGAAGAAACGGGCGCGGAAAGAGAGGGCAGCGGTGGCAGCGGAGGTGGCAGCCAGCCTC  
GGGCCGAGCGCAGTCAGCTCCAGGGACCCTCGTCGTGAGAGTACTGGAAGGAGTGGCCAGCGCTGAGTC  
CCCATACTCCCAGAGCTCAGAGCTGAGTCTGACCGGGCCAGCCGAGCGAGACACCACAGAACAGCCCC  
CTGCCATCTCCCGATCGTGCCATGTCCAAGCCACCAAGCCCTCGGTCCCCCGCTGACCCCGAGC  
AGTACGAGGTCTACATGTACCAGGAGGTGGACACCATCGAGCTCACCCGGCAGGTTAAGGAAAAGCTGGC  
CAAGAACGGCATCTGCCAGAGAATCTTCGGGGAGAAGGTGCTGGCCCTGTCCAGGGCAGCGTCAGCGAC  
ATGCTGTCCCACCGAAGCCATGGAGCAAGCTGACGCAGAAAGGCCGAGAACCCTTATCCGGATGCAGC  
CTTGGCTGAACGGCGAGCTAGGCCAGGGTGTCTACCCGTCCAGGGCCAGCAGCAAGGGCCAGTCCCTCA  
CTCCGTGACATCGCTCCAGGACCCGCTGCAGCAGGGCTGTGTGAGCTCAGAAAGCACTCCAAGACCTCC  
GCCAGTGCAGCCCTGCCCTGAGTCCCGATGAGTTCAGTGTGAGTGGTGAAGAGCCTGACCGAGCTGG  
TCCAGCAGCCCTGTCCCCCATCGAGGCGAGCAAGGACAGCAAGCCACCAGAGCCAGTACCCGCCAGC  
ATCCGACTCCCAGCCACAACCCCGTGCCTCTCTCCGGACTCGGCCCTCAGCATCCAAGAATTAGTA  
GCCATGTCCCGGAGCTGGACACCTACGGCATAACCAAGCGGGTGAAGGAGGTGCTGACGGACAACAACC  
TCGGCCAGCGCTATTTGGGAGACCATCTTAGGGCTACCCAAGGCTCTGTCTGTGACCTCTTGGCCG  
CCCCAAACCTGGCATAAGCTCAGTCTGAAAGGACGAGAGCCCTTCGTCCGGATGCAGCTGTGGCTGAAC  
GACCCCAACAATGTGGAGAAGCTGATGGACATGAAACGGATGGAGAAGAAAGCCTACATGAAGCGCGGC  
ACAGCTCAGTCAGTGACAGCCAGCCCTGCGAACCCGCTCTGTCCGCACCGAGTACAGCCAGGGCGCCAG  
CCCCAGCCCCAGCACCAGCTGAAGAAACCCCGGGTGGTGTGGTCCGGAGGAGAAGGAGGCGCTGAAA  
CGAGCGTATCAGCAAAAGCCATACCCGTACCAAAAACCATCGAAGACCTCGCCACCCAGCTCAACTGA  
AAACCAGCACCCTCATCAACTGGTTCACAACACTACAGGTCTCGGATCCGCAGAGAAGTGTTCATTGAGGA  
AATTACAGCCGGGAGTCAGGGCCAGGCGGGCGCCAGCGACTCACCTCGGCCCGCAGCGGCCGGCGGGC  
CCCAGCTCGGAGGGCGACAGCTGCGACGGCGTGGAGGCCACTGAGGGCCAGGACGCCGACACCGGAG  
AGCCCAAGTCTCAGGGAGAGGCCGAGCGGGAGGAGGTGCCGCGGCCGGCGGAGCAGACGGAGCCCGCC  
CTCGGGGACCCCGGGCCCGGACGACGCCCGCGACGACGACACCAGAGGGAGGCCCGCTGGAAGGCCCGGG  
CCCTGCCAGCCCGCCTCCGCGACCGCCACCGCCGCGCCCGCGGCCCGAGGACGCCCTACCTCAG  
CCGCGCCCGCGCCGGGGAGGGCCCGCGGCCCGAGCTCCGCGCCCGCCAGCAACAGCAGCAGCAG  
CAGCGCCCCCGCAGGCCAGCTCGCTGCAGAGCCTTTTCGGCCTCCCCGAGGCCGCGGGCGCCGGGAC  
TCGCGCGACAACCCCTGCGCAAGAAGAAGGCCGCAACTTGAACAGCATCATCCACCGCTGGAGAAGG  
CCGCCAGCCGGGAGAACCTATCGAATGGGAGTTC

ACGCGTACGCGGCCGCTCGAG - GFP Tag - GTTTAA

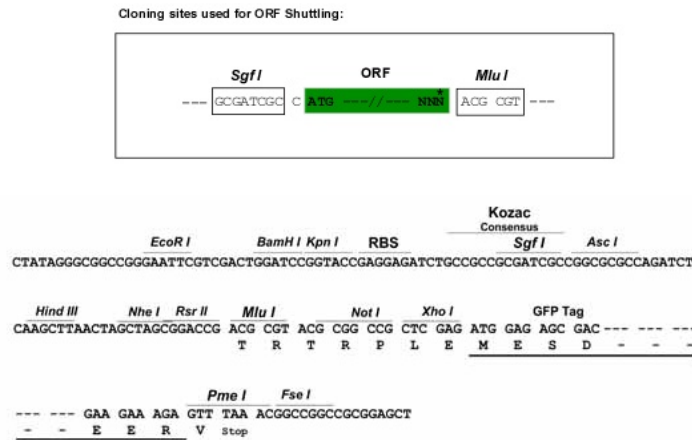
**Protein Sequence:** >RG224512 representing NM\_181552  
Red=Cloning site Green=Tags(s)

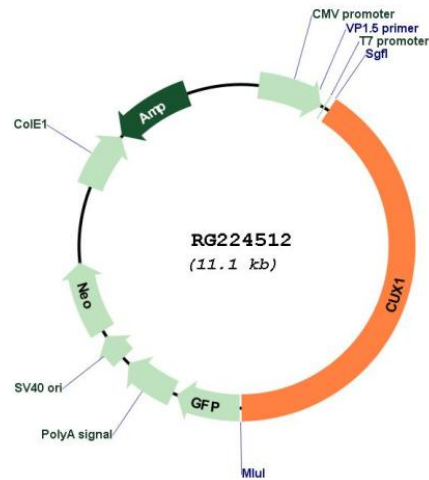
```
MLCVAGARLKRELDATATVLANRQDESEQSRKRLIEQSREFKKNTPEDLRKQVAPLLKSFQGEIDALSKR
SKEAEAAFLNVYKRLIDVPDPVPALDLGQQQLKVKVQRLHDIETENQKLRETL EYNKEFAEVKNQEVTIK
ALKKEKIREYEQTLKNQAETIALEKEQKLQNDFAEKERKLQETQMSTTSKLEEAHKVQSLQTALEKTRTE
LFDLTKTKYDEETTAKADEIEMIMTDLERANQRAEVAQREAE TLREQLSSANHSLQLASQIQKAPDVEQAI
EVLTRSSLEVELAAKEREIAQLVEDVQRLQASLTKLRENSASQISQLEQQLSAKNSTLQKLEEKLGQAD
YEEVKKELNLIKSMEFAPSEGAGTQDAAKPLEVLLLEKNRSLQSENAALRISNSDLSGSARRKKGDPES
RRPGSLPAPPSQLPRNPGEASNTNGTHQFSPAGLSQDFFSSSLASPSLPLASTGKFALNSLLQRQLMQ
SFYSKAMQEAGSTSMIFSTGPYSTNSISSQSPLQQSPDVNGMAPSPSQSESAGSVSEGEEMDTAEIARQV
KEQLIKHNIQGRIFGHYV LGLSQGSVSEILARPKPWNKLTVRGKEPFHKMKQFLSDEQNILALRSIQGRQ
RENPGQSLNRLFQEVPKRRNGSEGNITTRIRASETGSD EAIKSILEQAKRELQVQKTAEPAPSSASGSG
NSDDAIRSILQQARREMEAQAALDPALKQAPLSQSDITILTPKLLSTSPMPTVSSYPPLAISLKKPSAA
PEAGASALPNPPALKKEAQDAPGLDPQGAADCAQGVLRQVKNEVGRSGAWKDHWSAVQPERRNAASSEE
AKAEETGGGKEKSGSGSGGSQPRAERSQLQGPSSEYWK EWPSAESPYQSSELSTTGASRSETPQNSP
LPSSPIVPM SKPTKPSVPLTPEQYEVYMQEVDTIELTRQVKEKLAKNGICQRIFGKVLGLSQGSVSD
MLSRPKPWSKLTQKGREPFIRMQLWLNGLGQGVL PVQGGQQGPVLHVSLSLQDPLQQGCVSSESTPKTS
ASCSPAPESPMSSESVKSLTEL VQQPCPIEASKD SKPPEPSDPPASDSQPTTPLPLSGHSALSIQELV
AMSPELD TYGITKR VKEVLT DNNLGQRLFGETI LGLTQGSVSDLLARPKPWHKLSLKGREPFV RMQLWLN
DPNNVEKLM DMKRMEK KAYMKRRHSSVSDSQPC EPPSVGTEYSQ GASPQPHQLKKPRVVLAP EEKALK
RAYQQKPY PPKTIEDLATQLNLKTSTVINWFHNYRSRIRRELFIEEIQAGSQGAGASDPSARSGR AA
PSEGDSCDGV EATEGPGSADTEEPKSQGEAERE E VPRPAEQTEPPPSGTPGPD DARDDDHEGGPVEGPG
PLPSPASATAA PAAPEDAATSAAAAPGEGPAAPSSAPPPSNSSSSSAPRRPSSLQSLFGLPEAAGARD
SRDNPLRKKKAANLNSIIHRLEKAASREPIEWEF
```

TRTRPLE - GFP Tag - V

**Restriction Sites:** SgfI-MluI

**Cloning Scheme:**



**Plasmid Map:**


**ACCN:** NM\_181552

**ORF Size:** 4515 bp

**OTI Disclaimer:** The molecular sequence of this clone aligns with the gene accession number as a point of reference only. However, individual transcript sequences of the same gene can differ through naturally occurring variations (e.g. polymorphisms), each with its own valid existence. This clone is substantially in agreement with the reference, but a complete review of all prevailing variants is recommended prior to use. [More info](#)

**OTI Annotation:** This clone was engineered to express the complete ORF with an expression tag. Expression varies depending on the nature of the gene.

**Components:** The ORF clone is ion-exchange column purified and shipped in a 2D barcoded Matrix tube containing 10ug of transfection-ready, dried plasmid DNA (reconstitute with 100 ul of water).

**Reconstitution Method:**

1. Centrifuge at 5,000xg for 5min.
2. Carefully open the tube and add 100ul of sterile water to dissolve the DNA.
3. Close the tube and incubate for 10 minutes at room temperature.
4. Briefly vortex the tube and then do a quick spin (less than 5000xg) to concentrate the liquid at the bottom.
5. Store the suspended plasmid at -20°C. The DNA is stable for at least one year from date of shipping when stored at -20°C.

**RefSeq:** [NM\\_181552.4](#)

**RefSeq Size:** 13760 bp

**RefSeq ORF:** 4518 bp

**Locus ID:** 1523

**UniProt ID:** [P39880](#)

**Cytogenetics:** 7q22.1

**Protein Families:** Transcription Factors, Transmembrane

**Gene Summary:** The protein encoded by this gene is a member of the homeodomain family of DNA binding proteins. It may regulate gene expression, morphogenesis, and differentiation and it may also play a role in the cell cycle progression. Several alternatively spliced transcript variants encoding different isoforms have been identified.[provided by RefSeq, Feb 2011]