

## Product datasheet for **RG224507**

### NBEAL2 (NM\_015175) Human Tagged ORF Clone

#### Product data:

Product Type:	Expression Plasmids
Product Name:	NBEAL2 (NM_015175) Human Tagged ORF Clone
Tag:	TurboGFP
Symbol:	NBEAL2
Synonyms:	BDPLT4; GPS
Mammalian Cell Selection:	Neomycin
Vector:	pCMV6-AC-GFP (PS100010)
E. coli Selection:	Ampicillin (100 ug/mL)
ORF Nucleotide Sequence:	>RG224507 representing NM_015175 Red=Cloning site Blue=ORF Green=Tags(s)

TTTTGTAATACGACTCACTATAGGGCGGCCGGAATTCGTCGACTGGATCCGGTACCGAGGAGATCTGCC  
GCC**CGATCGCC**

ATGGCCGCTCGGAGCGGCTGTACGAGTTGTGGCTGCTCTACTACGCGCAGAAGGACCTGGGTTACCTGC  
AGCAGTGGCTGAAGGCCTTTGTAGGTGCCTTCAAGAAGAGCATCTCACTGCCTCTCTGGAGCCACGAAG  
GCCAGAGGAGGCAGGTGCAGAGTCCCCTGCTACCACTGGATGAGCTGCATGTGCTGGCCGAACAGCTG  
CACCAGGCTGACCTGGAGCAAGCCCTCCTGCTGCTCAAGCTCTTCATCATTCTCTGCAGGAACCTGGAGA  
ACATAGAGGCAGCCGGGCAAGTGTAGTGCCTGAGTGGCACTGTTGACCAAGTTGGTGGCGGA  
GCTGAAAGGATGCCACCACCCAGGGCCGAGGCACGCAGTTGGAGAATGTGGCCCTACATGCTCTGCTT  
CTCTGCGAGGGCCTCTTTGACCCCTACCAAACCTGGCGGCCAGCGCAGTGGGGAAGTCATCAGCTCCA  
AGGAGAAGAGCAAATACAAGTTCCCTCCTGCTGCTTTGCCCCAGGAATTCAGCGCCTTCTTCCAAGAGAG  
CCTACAGAATGCAGACCACTTGCCTCCCATACTGCTGTTACGTCTCATCCACCTCTTCTGCGCCGTCCTC  
GCTGGAGGAAAGGAGAACGGGCAGATGGCTGTAAGTGTGGCTCTGTGAAGGGCTGCTGAGTGTGGTGC  
GGGGCTGGAGCCGTGGGCCAGCCCGGACCCGTGCTAGTGCCTGCTAGAGGCACTGGTAGGTGC  
AGTCCATGTCTTGCATGCCAGCCGCGCACCTCCTCGTGGCCAGAGCTTCGTGCCCTGCTTGAGAGCTAC  
TTCCATGTCCTTAATGCTGACTGGCCAGCTGGTCTGAGCTCAGGCCCGAAGAGGCCCTTGTACCCTCC  
GGGTGAGCATGCTCGACGCCATCCCATGATGCTGGCATGTGAAGACCGCCAGTGTGCAAGCCACCTT  
CCTCAGCAAAATTGCTTTGAACACCTCACTCGGCTCATTGAGAAGCAAGCTGTACCTGCAGTCCCGG  
GCGCCCCCGAGGGGACAGTGCCTGCTACCCGTTACTGACTGAGCCGATGTCCAAAAGTCTG  
ACCAAGACACAGACGCCATTGCACTCCATGTAGTCAGAGTGTGACCTGCATCATGAGTACTCCCCCTC  
GGCCAAGGAGGTGTTAAGGAGCGCATCGGCTACCCTCACCTGCAGGAGTTCTGCAGAGCCATGGTCCC  
CCCACCCATCGGCTGTTGCAAGAGCTGCTAACATGGCTGTGGAGGGTGACCACAGCATGTGCCACCTC  
CACCAATCGCAACGAGCAGCCGCTACTGGTGTGGCGCAGTGGTCCGTCATTGCCACCCTGAGCT  
GCGGCTCTTCTAGCGCAACGCCTCAGGTGGCTCTGTGACAGTGCCTGCCAGCCGTGCCACCTGTGTG



CAGGCAGGCCTGGTGGGCTGCCTGTTGGAGACTCAGCACAGGGCTAGCCCTGGAGGCCCGCTGCCAAG  
 AGCAGTCTGGCACTGTACAAGCACTGGGCCGTGTATCAATAAGGCCCATGGAGCTGCCTCACCTGCT  
 GCGCCCCGGCCAGGATTGGACTCGGAACCAGGCGGAGCTGAGGCTGAAAGGCCCGACACGCAGGTGCT  
 GTCATCCGCACATTATCAGGCATGGCCAGGCACCAGGGTCTGCACGTGCTCTGCGCTACTTTGACCTCA  
 CGCCACAGCATGGCGGCATCATGGTACCCCTGTACAGCGATGGCCAGGGCTGGCTTACCTTTTATGC  
 CTGGCTCTGTCTGCACCCTATGGATAACAGCACCTACCCCTGCCCCACCCGACCCTCCAGCGAAAGCAG  
 CTGTACAGCTTCTTACCAGCAGCGGCTCAGGGTTTGGAGCCTTCTTACGGCGGCCGGACCCTGGTGG  
 TGGCTGTGTGCACACGGAAGGAGTATTTGACCATGAGTTTGCCCGAAGTGTCTTTGCCGACTCTGCCTG  
 GCACTGCGTGGCTATCGTCCATGTGCTGGGCGCCGGCCCTTACGCCAGAACCTGGTCCATGTCTACAAA  
 GACGGCCATCTGGTCAAGACAGCACCCCTTCGCTGCCCTCCCTCAGTGAGCCTTCTCCTCCTGTGTGA  
 TCGGCTCCGCTGGATACCGCACACGACCACCACAGGGCTGCCACACCACCAGTCCCCGCCACCT  
 GGCCTACACTCACCCGCCCTCACCCGCTCCAGTCAGTCCAGCCTCCACAGGGCTTGGCTGGGGTCC  
 GGGCTGGTGGCCCCCTGCAGGAGGGCAGCATCGACTTACCCTCGCAGGCACCCAGGACTCGGTGGG  
 GCAGCCCCACATCCCTGGAGGGTGAAGTGGGGCTGTGGCCATCTTTCACGAAGCCCTGCAGGCGACGGC  
 TCTGAGGACCCTGTGCACCTGGGGCCCAATGAGACGGCACCCCTCAAGCCTGAGGGGGAGCTGCATGAG  
 CTACGACCCAGGCTGCTCCTCCATTACTCACTCAGGCTTGTAAAGAACACATCTGCCTGGACCTGTCCC  
 CCAATCATGGGCTTGTGGGCGCCTGACGGGCCACAGAGTGGAGACCTGGGATGTGAAGGATGTGGTGAA  
 CTGCGTTGGGGTATGGGTGCCCTGCTGCCCTGCTGGAGCGAGTAGCTGCACAGCCAAAGAGGCTGAA  
 GCAGGTCCAGTGAACGCATGACCTCGTGGGTCTGAAGTACCTCTGGTCAACACCCAGGGCCTGG  
 TTCTCCATTGGGTAAATCTTACAGGAACGGATGGAGAGGAACGCAGTGGCTGCTTTTCTGTGATGCT  
 GCGGAACCTTCTTACGGTCACTGGTGAACCAAGAGAGCCTGGTGCAGTCCAGGGCCTGCCATCATC  
 GGGGCCCTCCTGCGAAAGGTCCCAAGCTGGGCCATGGACATGAACGTGCTCATGTCCGCGAGCTGCTGA  
 TGGACAGGTGGCAGCTGAGGGCAGCGGCCCTCCTGTACTCTACCAGCATTGTCTTCAACTT  
 TCACCTCTGGACCCTCAGTGACTTCGCCCTGCGCCTCGGTCCACATCCAGTACATGTCCAGCATAGTTCGG  
 GAGCACAGACAGAAGCTGCGGAAGAAGTACGGCGTCCAGTTTATCTTGGATGCTCTGCGCACCCACTACA  
 GCCCGCAGCGGGAGCGCCCCCTGGCTGCTGACGACCTACGCACCGTGCAGACCTCCCTCCTGGGCTGGC  
 GAGGGAGTTCCTGGTGGGAGTCTCTCAGCAGATGACGTGCAGGTACGCAGACCATGCTGAGCTTTTTG  
 GCGGCCACAGGCGATGACGGTACGGCGGTGGTGGCTGGACCTGCTGCTGGCCCTGCTGCACGGTCCC  
 TGGTGCAGGAGTCTTGGCTGTCTTTCTGTTGGAGCCAGGAACCTCGAAGTGTACTGGCCCTGCTAGT  
 GCGGCCAGGGTCACTGCCCTGCTGCCCGATCGAGTCTGCAAGATCCTGCGCAGACTGCAGCAGAATGAG  
 CGGCTACCTGAGCGGAGCCGCCAGCCCTCCGGCTGCGGGAGTGGTCTCCAGGGTCTGGTTGCCTGCT  
 TGCTGAGGGGACTGTTTCCCCCAGCTCTGCCAGGGCCTCTACAAGCTGTTCTGGGGGAGATTGCCCT  
 GAACCTCTCAGATCTGCTGGCTGTGGTACAGCTGTCCCTCCAGGCTGACCTCAGCGTTCCGCTAGACATC  
 TGTCCGACGTTTTCCACCTCATCTACGGACAGCCAGATGTAGTGGGCTTCTGGCCGACAGGCTGGCT  
 GGCAAGATGTGCTGACCCGGCTATATGCTCTGGAGGCTGCCACAGCCGGCAGCCCCCTCCGCTTCCCC  
 AGAGTCACTACCTCCCCAAGCCAGCCCCACCAAGCCACCCACTGAGTCACTGCTGAGCCTTCAGAT  
 GTCTTCTGCCCTCAGAGGCCCTGCCCTGACCTGATGGCTTTTACCATGCTCTCTCCCATTCTGCA  
 GCCTTTTACCTGGGCTGGAACGGTCTAGTGTAGGATCAGGCAACACTGCTGGTGGTGGCGGCAGCAG  
 TGGGACTTACTCCAGCCAGCCAGCCCGGCCTCCTTCGCCACTGGATGGGCGCGGCCCTTCTCTGCT  
 GCTCCTGGCCGCCACAGCTCCAGTCTCTCAATGTGCTGGAGGACGGCAGCCTCCCGGAGCCACCATTA  
 GCGGGGATGATACCTCGAACACCAGCAACCCACAGCAAACCTCTGAGGAAGAGTTGTGAATCTGCTCAC  
 CAACGTGCTGTTCTCGGTGACGTGGCGTGGCGTGGAAAGGCAGCGATGAGGCTGCCTGGCGGGAGCGTGGC  
 CAGGTTTTCTCAGTGTCTACCCAGCTGGGGCCTCAGCCACACTTGTGCGCCACCAGACTGCATCAAGC  
 GCAGCCTCCTGGAGATGATGCTGGAGTACGCCCTGACCGACATCAAAGAGGCCCCCGTGGGGTCTGGC  
 CAGCCTCACCCAGCAAGCGCTTTGGCTGCTGCGTCTGCTGCAGGACTTCTGTGTCTGAAGCCATGGT  
 AACCCAGGAAGTGGAGTGAGAAGCTCTTGAAGGTGTATGCAGCCTACTTGATCGCTGGGAGCCTGGC  
 CCCACTGGCCAACGGCACAGCTGATCTCCGTGAGATGGCGCAGATTGGCTACGGCTTGTACTTGGCTA  
 CATCTGCTGGAAGACCCACAGCTGCATGCCAGGCCTACGTGAGATTGCACATGCTGCTACAGACTGCA  
 GTGCCAGCCCGCGGAGGAGGCTGCTATGTGCTCTCAAGCTGGAGGCTGCACTGGGGCGGGTGTGA  
 ACACCTCTTCTTGGAGTACGCCACTGATGAGGACGGTCCCCACTTGCAGCTGCAGCAGCTGCAGCAGC  
 TGACAGAGCGTCTCTGGCTGGTGGCACTGGTGGCAGCAGCTGTAGACCGTGCCTATGAGCCGCTGGG  
 CTGAGTGGGACTGCCCTCCCTGCCACCACCAATGGCAGCCCCACCTTCTTTGAAGACTTCCAGGCTT

TTTGTGCCACACCCGAATGGCGCACTTCATCGACAAACAGGTACAGCCAACCATGTCCCAGTTCGAAAT  
 GGACACGTATGCTAAGAGCCACGACCTTATGTCAGGTTTCTGGAATGCCTGCTATGACATGCTTATGAGC  
 AGTGGGACGCGCGCCAGTGGGAGCGCGCCAGAGTCTGTCGGGCTTCCAGGAGCTGGTGTGGAACCTG  
 CGCAGAGGCGGGCGCCCTGGAGGGGCTACGCTACACGGCAGTGTGAAGCAGCAGGCAACGCAGCACTC  
 CATGGCCCTGCTGCACTGGGGGGCGCTGTGGGCCAGCTCGCCAGCCCATGTGGGCTGGGCGCTGAGG  
 GCAACCATCACTTCGACCCTCACCTGGAAGCCAGCGCTCTCCGAGACAATCTGGGTGAGGTTCCCCTGAC  
 ACCCACCAGGAGGCTCACTGCCTCTGGCAGTGACCAAAGAGGCCAAAGTGAGCACCCACCCGAGTTG  
 CTGACAGGAGGACCAGCTCGGCGAGGACGAGCTGGCTGAGCTGGAGACCCCGATGGAGGCAGCAGAAGTGG  
 ATGAGCAGCGTGAGAAGCTGGTGTGTCGGCCGAGTGCCAGCTGGTGACGGTAGTGGCCGTGGTCCCAGG  
 GCTGTGGAGGTCAACACACAGAATGTATACTTCTACGATGGCAGCACTGAGCGCGTGAAACCGAGGAG  
 GGCATCGGCTATGATTTCCGGCGCCCACTGGCCAGCTGCGTGAGGTCCACCTGCGGCGTTTCAACCTGC  
 GCCGTTACGCACTTGAGCTTTCTTTATCGATCAGGCCAACTACTTCTCAACTTCCCATGCAAGGTGGG  
 CACGACCCAGTCTCATCTCTAGCCAGACTCCCAGACCCAGCCTGGCCCATCCCACCCCATACCCAG  
 GTACGGAACAGGTGACTCGTGGCTCCTGCGCCTACGGCCCCCTCTCAAGGCTACCTAAGCAGCCGCT  
 CCCCCAGGAGATGCTGGTGCCTCAGGCTTACCCAGAAATGGGTACAGCGTGAGATATCCAACCTCGA  
 GTACTTGATGCAACTCAACACCATTTGCGGGGCGGACCTACAATGACCTGTCTCAGTACCCTGTGTTCCCC  
 TGGGCTCTGCAGGACTACGTGTCCCAACCCTGGACCTCAGCAACCCAGCCGTCTTCCGGGACCTGTCTA  
 AGCCCATCGGTGTGGTGAACCCCAAGCATGCCAGCTCGTGAGGGAGAAGTATGAAAGCTTTGAGGACCC  
 AGCAGGGACCAATTGACAAGTTCCTACTATGGCACCCTACTCCAATGCAGCAGGCGTGATGCACTACCTC  
 ATCCGCGTGGAGCCCTTCACTCCCTGCACGTCCAGCTGCAAAGTGGCCGCTTTGACTGCTCCGACCGGC  
 AGTTCCTACTCGGTGGCGGCAGCCTGGCAGGCAGCCTGGAGAGCCCTGCCGATGTGAAGGAGCTCATCCC  
 GGAATTTCTACTTTCTGACTTCTCTGGAGAACCAGAACGGTTTTGACTGGGCTGTCCAGCTGAC  
 AACGAGAAGGTAGGCGATGTGGTGTACCCCGTGGGCCAGCTCTCTGAGGACTTCATCCAGCAGCACC  
 GCCAGGCTCTGGAGTCGGAGTATGTGTCTGCACACCTACACGAGTGGATCGACCTCATTTTGGCTACAA  
 GCAGCGGGGGCCAGCCGCGGAGGAGGCCCTCAATGTCTTCTATTACTGCACCTATGAGGGGGCTGTAGAC  
 CTGGACCATGTGACAGATGAGCGGGAACGGAAGGCTCTGGAGGGCATTATCAGCAACTTTGGGCAGACTC  
 CCTGTGAGCTGTGAAGGAGCCACATCCAACCTCGGCTCTCAGCTGAGGAAGCAGCCCATCGCCTGCACG  
 CCTGGACACTAACTCACCTAGCATCTTCCAGCACCTGGACGAACCAAGGCATTCTTCGAGAGGTTGTC  
 AGTGATGGTGTACCCCTGGTGTAGCCCTGGTCCCCACCGGCAGCCCCACTCCTTCATACCCAGGGTT  
 CCCCAGACCTGTTGGTGACTGTGAGTGCCAGTGGGCTGCTGGGCACCCACAGCTGGTTGCCCTATGACCG  
 CAACATAAGCAACTACTTCAGCTTCAGCAAAGACCCACCATGGGCAGCCACAAGACGCAGCGACTGCTG  
 AGTGGCCCGTGGGTGCCAGGCAGTGGTGTGAGTGGACAAGCACTGGCAGTGGCCCCGGATGGAAAGCTGC  
 TATTACGCGGTGGCCACTGGGATGGCAGCCTGCGGGTACTGCACTACCCCGTGGCAAGCTGTTGAGCCA  
 GCTCAGCTGCCACCTTGATGTAGTAACCTGCCTTGCACTGGACACCTGTGGCATCTACCTCATCTCAGGC  
 TCCCGGGACACCAGTGCATGGTGTGGCGGCTCCTGCATCAGGGTGGTCTGTGAGTGGCCATCAGCACTGA  
 AGCTGTGAGGTCCTGTATGGGCATGGGGCTGCAGTGTGAGTGTGGCCATCAGCACTGAACCTGACAT  
 GGCTGTGCTGGATCTGAGGATGGAACCTGTGATCATAACACTGTACGCCGCGGACAGTTTGTAGCGGCA  
 CTACGGCCTCTGGGTGCCACATTCCTGGACCTATTTTCCACTGGCATTGGGGTCCGAAGGCCAGATTG  
 TGGTACAGAGCTCAGCGTGGGAACGTCTGGGGCCAGGTCACTACTCCTTGACCTGTATTTCAGTCAA  
 TGGGAAGTTGCGGGCTTCACTGCCCTGGCAGAGCAGCCTACAGCCCTGACGGTGACAGAGGACTTTGTG  
 TTGCTGGGCACCGCCAGTGCGCCCTGCACATCCTCCAACCTAAACACACTGCTCCCGGCCGCGCCTCCCT  
 TGCCCATGAAGGTGGCCATCCGCAGCGTGGCCGTGACCAAGGAGCGCAGCCACGTGCTGGTGGGCTGGA  
 GGATGGCAAGCTCATCGTGGTGGTGGCGGGGAGCCCTCTGAGGTGCGCAGCAGCCAGTTTCGCGCGGAAG  
 CTGTGGCGGTCTCGCGGCGCATCTCCAGGTGTCTCGGAGAGACGGAATAACAACCTACTGAGGCGC  
 GC

ACGCGTACGCGGCGGCTCGAG - GFP Tag - GTTTAA

**Protein Sequence:** >RG224507 representing NM\_015175  
 Red=Cloning site Green=Tags(s)

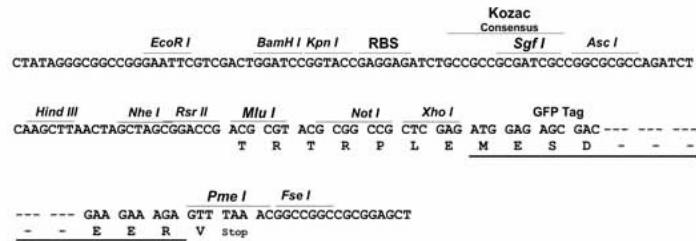
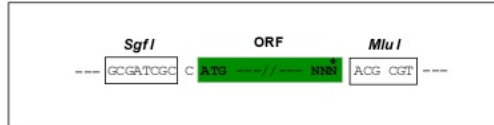
MAASERLYELWLLYYAQKDLGYLQQWLKAFVGFKKSISLSSLEPRRPEEAGAEVPLPLDELHVLAEQL  
 HQADLEQALLLLKLFIIICRNLEIEAGRGQVLVPRVLLTKLVAELKGCPPPQGRGTQLENVALHALL  
 LCEGLFDPYQWRRQRSGEVISSKEKSKYKFPAAALPQEFSAFFQESLQNADHLPPILLRLIHLFCAVL  
 AGGKENGQMAVSDGSVKGLL SVVRGWSRGPAPDPCLVPLALEALVGAVHVLHASRAPRGPPELRALLESY  
 FHVLNADWPAGLSSGPEEALVTLRVSMLEAIPMMLACEDRPVLQATFSLNNCFEHLTRLIQNSKLYLQSR  
 APPEGSDLATRLLTEPDVQKVLDDQDTDAIAVHVVRVLTICMSDSSPAKEVFKERIGYPHLQEVLLQSHGP  
 PTHRLQLLELNMAVEGDHSMCPPIRNEQPVLVLAQWLPSTAEELRFLAQRLRWLDCSPASRATCV  
 QAGLVGCLLETSTGLALEARCQEQLLALLQALGRVSIKRMELRHLLRPRGLDSEPGGAEAGKARHAGA  
 VIRTLSGMARHQPARALRYFDLTPSMAGIMVPPVQRWPGGFTFHAWLCLHPMDTAPTAPTRPLQRKQ  
 LYSFFTSSGSGFEAFFTAAGTLVAVCTRKEYLTMSLPEVSFADSAWHCAIVHVPGRPPFSQNLVHVYK  
 DGHLVKTAPLRCPSLSEPFSSCCIGSAGYRTTTTTGLPTPPVPATLAYTHPALTRSQSVASTGLGWGS  
 GLVAPLQEGSIDSTLAGTQDTRWGSPTSLEGELGAVAIHFHEALQATALRTLCTLGNPNETAPFKPEGELHE  
 LSTRLLHYPQACKNNICLDLSPSHGLDGRLTGHRVETWVDKDVNVCVGMGALLPLLERVAAQPKAEAE  
 AGPAETHDLVGPELTSQHNTQGLVPLPGKSSEERMERNAVAFLMLRNFLQGHMVNQEESLVQCQGAII  
 GALLRKPVPWAMDMNVLMSAQLLMEQVAAEGSGPLL YLLYQHLLFNHFWLWLSDFAVRLGHIQYMSSIVR  
 EHRQKLRKKYGVQFILDALRTHYSPQRERPLAADDLRTVQTSLLGLAREFLVRSLSADDVQVTQTMLSFL  
 AATGDDGQAVGALDLLLLALLHGSLVQESLAVFLLEPGNLEVLLALLVRPGSLPLLPDRVCKILRRLQONE  
 RLPERSRQRLRLREGLQGLVACLPEGTVPQLCQGLYKFLGADCLNLDLLAVVQLSLQADLSVRLDI  
 CRQLFHLIYGQPDVVRLARQAGWQDVLTRLVYLEAATAGSPPSSPESPTSPKAPPKPPTESPAEPSD  
 VFLPSEAPCPDPDFYHALSPFCTPFDLGLERSVSGNTAGGGGSSGTLTPASQPGTSPPLDGRPFPA  
 APGRHSSSLSNVLEDGSLPEPTISGDDTNTSNPQQTSEEELCNLLTNVLF SVTWRGVEGSDAAWRERG  
 QVFSVL TQLGASATLVRPPDCIKRSLLEMLESALTDIKEAPVGLASLTQQALWLLRLLQDFLCAEGHG  
 NQELWSEKLFEGVCSLLDRLGAWPHLANGTADLREMAQIGLRLVLYILLEDPLHAQAYVRLHMLLQTA  
 VPARREEACYVLSKLEAALGRVLTSSLESATDEAGSPLAAAAAAAAAERCSWL VPLVRTLLDRAYEPLG  
 LQWGLPSLPPTNGSPTFFEDFQAFCATPEWRHFIDKQVQPTMSQFEMDTYAKSHDLMSGFWNACYDMLMS  
 SGQRRQWERAQSRRAFQELVLEPAQRRARLEGLRYTAVLKQATQHSMALLHWGALWRQLASPCGAWALR  
 DTPIPRWKLSAETYSRMRLKLVNHHFDPHLEASALRDNLGEVPLTPTEEASLPLAVTKEAKVSTPPEL  
 LQEDQLGEDELAELTPMEEAELDEQREKLVLSAECQLVTVVAVVPGLEVTQNVVYFDGSTERVETEE  
 GIGYDFRRPLAQLREVHLRRFNLRSALELFFIDQANYFLNFPCKVGTTPVSSPSQTPRPQPGPIPPHTQ  
 VRNQVYSWLLRRLRPPSQGYLSSRSPQEMLRASGLTQKWWQREISNFEYLMQLNTIAGRTYNDLSQYPVFP  
 WVLQDYVSPTLDL SNAVFRDL SKPIGVVNPKHAQLVREKYESFEDPAGTIDKFHYGTHYSNAAGVMHYL  
 IRVEPFTSLHVQLQSGRFDSDRQFHSAVAAWQARLESPADVKELIPEFFYFPDFLENQNGFDLGCGLQT  
 NEKVGDDVLPWASSPEDFIQQRQALESEYVSAHLHEWIDLIFGYKQRGPAEEALNVFYCYTEGAVD  
 LDHVTDERERKALEGII SNFGQTPCQLLKEPHPTLSAEEAHLARLDTNSPSIFQHLDELKAFFAEVV  
 SDGVPLVLALVPHRQPHSFITQGSDDLVTVSASGLLGTSHWLPYDRNISNYFSFKDPTMGSHKTQRL  
 SGPWWPGSGVSGQALAVAPDGKLLFSGGHWDGSLRVTALPRGKLLSQLSCHLDVVTCLALDTCGIYLI  
 SGRDTCMVWRL LHQGLSVGLAPKPVQVLYGHGAAVSCVAISTELDMAVSGSEDGTVI IHTVRRGQFVAA  
 LRPLGATFPGPIFHLALGSEGQIVVQSSAWERPGAQVTYSLHLYSVNGKLRASLPLAEQPTALVTYEDFV  
 LLGTAQCALHILQLNTLLPAAPPLPMKVAIRSVAVTKERSHVLVGLLEDGKLI VVVAGQPSEVRSSQFARK  
 LWRSSRRISQVSSGETEYNPTEAR

TRTRPLE - GFP Tag - V

**Restriction Sites:** SgfI-MluI

## Cloning Scheme:

Cloning sites used for ORF Shutting:



ACCN: NM\_015175

ORF Size: 8262 bp

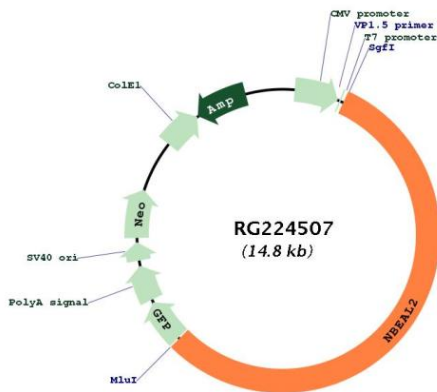
OTI Disclaimer: Due to the inherent nature of this plasmid, standard methods to replicate additional amounts of DNA in *E. coli* are highly likely to result in mutations and/or rearrangements. Therefore, OriGene does not guarantee the capability to replicate this plasmid DNA. Additional amounts of DNA can be purchased from OriGene with batch-specific, full-sequence verification at a reduced cost. Please contact our customer care team at [custsupport@origene.com](mailto:custsupport@origene.com) or by calling 301.340.3188 option 3 for pricing and delivery.

The molecular sequence of this clone aligns with the gene accession number as a point of reference only. However, individual transcript sequences of the same gene can differ through naturally occurring variations (e.g. polymorphisms), each with its own valid existence. This clone is substantially in agreement with the reference, but a complete review of all prevailing variants is recommended prior to use. [More info](#)

OTI Annotation: This clone was engineered to express the complete ORF with an expression tag. Expression varies depending on the nature of the gene.

- Components:** The ORF clone is ion-exchange column purified and shipped in a 2D barcoded Matrix tube containing 10ug of transfection-ready, dried plasmid DNA (reconstitute with 100 ul of water).
- Reconstitution Method:**
1. Centrifuge at 5,000xg for 5min.
  2. Carefully open the tube and add 100ul of sterile water to dissolve the DNA.
  3. Close the tube and incubate for 10 minutes at room temperature.
  4. Briefly vortex the tube and then do a quick spin (less than 5000xg) to concentrate the liquid at the bottom.
  5. Store the suspended plasmid at -20°C. The DNA is stable for at least one year from date of shipping when stored at -20°C.
- RefSeq:** [NM\\_015175.3](#)
- RefSeq Size:** 8843 bp
- RefSeq ORF:** 8265 bp
- Locus ID:** 23218
- UniProt ID:** [Q6ZNJ1](#)
- Cytogenetics:** 3p21.31
- Gene Summary:** The protein encoded by this gene contains a beige and Chediak-Higashi (BEACH) domain and multiple WD40 domains, and may play a role in megakaryocyte alpha-granule biogenesis. Mutations in this gene are a cause of gray platelet syndrome. [provided by RefSeq, Dec 2011]

**Product images:**



Circular map for RG224507