

Product datasheet for **RG224503**

Fibronectin (FN1) (NM_212474) Human Tagged ORF Clone

Product data:

Product Type:	Expression Plasmids
Product Name:	Fibronectin (FN1) (NM_212474) Human Tagged ORF Clone
Tag:	TurboGFP
Symbol:	FN1
Synonyms:	CIG; ED-B; FINC; FN; FNZ; GFND; GFND2; LETS; MSF; SMDCF
Mammalian Cell Selection:	Neomycin
Vector:	pCMV6-AC-GFP (PS100010)
E. coli Selection:	Ampicillin (100 ug/mL)
ORF Nucleotide Sequence:	>RG224503 representing NM_212474 Red=Cloning site Blue=ORF Green=Tags(s)

TTTTGTAATACGACTCACTATAGGGCGGCCGGAATTCGTCGACTGGATCCGGTACCGAGGAGATCTGCC
GCC**CGATCGCC**

ATGCTTAGGGGTCGGGGCCCGGGCTGCTGCTGCTGGCCGTCCAGTGCCTGGGGACAGCGGTGCCCTCCA
CGGGAGCCTCGAAGAGCAAGAGGCAGGCTCAGCAAATGGTTCAGCCCCAGTCCCCGGTGGCTGTCAGTCA
AAGCAAGCCCGTTGTTATGACAATGGAAAACACTATCAGATAAATCAACAGTGGGAGCGGACCTACCTA
GGCAATGCGTTGGTTTGTACTTGTATGGAGGAAGCCGAGTTTTAACTGCGAGAGTAACTGAAGCTG
AAGAGACTTGCTTTGACAAGTACACTGGGAACACTTACCGAGTGGGTGACTTATGAGCGTCCTAAAGA
CTCCATGATCTGGGACTGTACCTGCATCGGGGCTGGGCGAGGGAGAATAAGCTGTACCATCGCAAACCGC
TGCCATGAAGGGGTGAGTCTACAAGATTGGTACACCTGGAGGAGACCACATGAGACTGGTGGTTACA
TGTTAGAGTGTGTGTCTTGGTAATGGAAAAGGAGAATGGACCTGCAAGCCCATAGCTGAGAAGTGT
TGATCATGCTGCTGGGACTTCTATGTGGTCCGAGAAACGTGGGAGAAGCCCTACCAAGGCTGGATGATG
GTAGATTGTACTTGCTGGGAGAAGGCAGCGGACGCATCACTTGCCTTCTAGAAATAGATGCAACGATC
AGGACACAAGGACATCCTATAGAATTGGAGACACCTGGAGCAAGAAGGATAATCGAGGAAACCTGCTCCA
GTGCATCTGCACAGGCAACGGCCGAGGAGAGTGGAAAGTGTGAGAGGCACACCTCTGTGCAGACCACATCG
AGCGGATCTGGCCCTTACCAGTGTTCGTGCAGCTGTTTACCAACCGCAGCCTCACCCAGCCTCCTCCT
CCTATGGCCACTGTGTCACAGACAGTGGTGGTCTACTCTGTGGGATGCAAGTGGCTGAAGACACAAGG
AAATAAGCAAATGCTTTGCACGTGCTGGCAACGGAGTCACTGCAAGAGACAGCTGTAACCCAGACT
TACGGTGGCAACTCAAATGGAGAGCCATGTGTCTTACCATTACCTACAATGGCAGGACGTTCTACTCCT
GCACCACAGAAGGGCGACAGGACGGACATCTTGGTGCAGCACAACCTCGAATTATGAGCAGGACCAGAA
ATACTCTTCTGCACAGACCACACTGTTTTGGTTCAGACTCGAGGAGGAAATCCAATGGTGCCTTGTGC
CACTTCCCCTTCTATAACAACCAATTACTGATTGCCTTCTGAGGGCAGAAGAGACAACATGA
AGTGGTGTGGGACCACAGAACTATGATGCCACCAGAAGTTGGGTTCTGCCCATGGCTGCCACGA
GAAATCTGCACAACCAATGAAGGGTCATGTACCGCATTGGAGATCAGTGGGATAAGCAGCATGACATG



[View online »](#)

GGTCACATGATGAGGTGCACGTGTGTTGGGAATGGTCGTGGGAATGGACATGCATTGCCTACTCGCAGC
 TTCGAGATCAGTGCATTGTTGATGACATCACTTACAATGTGAACGACACATTCCACAAGCGTCATGAAGA
 GGGGCACATGCTGAAGTGTACATGCTTCGGTCAGGGTCGGGGCAGGTGGAAGTGTGATCCCGTCGACCAA
 TGCCAGGATTCAGAGACTGGGACGTTTTATCAAATGGAGATTCATGGGAGAAGTATGTGCATGGTGTCA
 GATACCACTGCTACTGCTATGGCCGTGGCATTGGGGAGTGGCATTGCCAACCTTTACAGACCTATCCAAG
 CTCAAGTGGTCTGTGCAAGTATTTACTACTGAGACTCCGAGTCAGCCCAACTCCCACCCCATCCAGTGG
 AATGCACCACAGCCATCTCACATTTCCAAGTACATTCTCAGGTGGAGACCTAAAAATTTCTGATGGCCGTT
 GGAAGGAAGCTACCATACCAGGCCACTTAAACTCCTACCCATCAAAGGCCTGAAGCCTGGTGTGGTATA
 CGAGGGCCAGCTCATCAGCATCCAGCAGTACGGCCACCAAGAAGTGAAGTGCCTTTGACTTACCACCACC
 AGCACCAGCACACCTGTGACCAGCAACACCGTGACAGGAGAGACGACTCCCTTTTCTCCTTTGTGGCCA
 CTTCTGAATCTGTGACCGAAATCACAGCCAGTAGCTTTGTGGTCTCCTGGGTCTCAGCTTCGACACCGT
 GTCGGGATTCGGGTGGAATATGAGCTGAGTGAGGAGGGAGATGAGCCACAGTACCTGGATCTTCCAAGC
 ACAGCCACTTCTGTGAACATCCCTGACCTGCTTCTGGCCGAAAATACATTGTAATGTCTATCAGATAT
 CTGAGGATGGGGAGCAGAGTTTGTCTGCTACTTACAAAACAACAGCGCCTGATGCCCTCCTGACCC
 GACTGTGGACCAAGTTGATGACACCTCAATTGTTGTTGCTGGAGCAGACCCAGGCTCCCATCACAGGG
 TACAGAATAGTCTATTCGCCATCAGTAGAAGGTAGCAGCACAGAAGTCAACCTTCTGAAACTGCAAACCT
 CCGTACCCCTCAGTGAAGTGTGCAACCTGGTGTTCAGTATAACATCACTATCTATGCTGTGGAAGAAAATCA
 AGAAAAGTACACCTGTTGTCAATCAACAAGAAACCCTGGCACCCACGCTCAGATACAGTGCCTCTCCC
 AGGGACCTGCAGTTTGTGGAAGTACAGACGTGAAGGTACCATCATGTGGACACCGCCTGAGAGTGCAG
 TGACCCGGTACCGTGTGGATGTGATCCCGTCAACCTGCCTGGCAGCAGCGGCAGAGGCTGCCATCAG
 CAGGAACACCTTTCGAGAAGTACCCGGCTGTCCCCTGGGGTACCTATTACTTCAAAGTCTTTCAGTG
 AGCCATGGGAGGGAGAGCAAGCCTCTGACTGCTCAACAGACAACCAAACTGGATGCTCCCACTAACCTCC
 AGTTTGTCAATGAAACTGATTCTACTGCTCTGGTGGATGGACTCCACCTCGGGCCAGATAAACAGGATA
 CCGACTGACCGTGGCCCTTACCCGAAGAGCAGCCAGGCAGTACAATGTGGGTCCCTGTCTCCAAG
 TACCCACTGAGGAATCTGCAGCCTGCATCTGAGTACACCGTATCCCTCGTGGCCATAAAGGGCAACCAAG
 AGAGCCCCAAAGCCACTGGAGTCTTTACCACACTGCAGCCTGGGAGCTCTATTCCACCTTACAACACCGA
 GGTGACTGAGACCACCATTTGTGATCACATGGACGCCTGCTCCAAGAATTGGTTTTAAGCTGGGTGTACGA
 CCAAGCCAGGGAGGAGAGGCACCACGAGAAGTGAAGTTCAGACTCAGGAAGCATCGTTGTGTCGGCTTGA
 CTCCAGGAGTGAATACGCTACACCATCCAAGTCTGAGAGATGGACAGGAAAGAGATGCGCCAATTGT
 AAACAAAGTGGTACACCATTGTCTCCACCAACAAACTGCATCTGGAGGCAACCCCTGACTGGAGTG
 CTCACAGTCTCCTGGGAGAGGAGCACCACCCAGACATTACTGGTTATAGAATTACCACAACCCCTACAA
 ACGGCCAGCAGGAAATTTCTTTGGAAGAAGTGGTCCATGCTGATCAGAGCTCCTGCACTTTTGATAACCT
 GAGTCCCAGCCTGGAGTACAATGTCAAGTGTTCACACTGTCAAGGATGACAAGGAAAGTGTCCCTATCTCT
 GATACCATCATCCAGCTGTTTCTCCTCCCACTGACCTGCGATTACCAACATTGGTCCAGACACCATGC
 GTGTCACCTGGGCTCCACCCCATCCATTGATTTAACCAACTTCTGGTGCCTTACTCACCTGTGAAAAA
 TGAGGAAGATGTTGAGAGTGTCAATTTCTCCTTACAGCAATGCAGTGGTCTTAAACAAATCTCCTGCCT
 GGTACAGAATATGTAGTGTCTCCAGTGTCTACGAACAACATGAGAGCACACCTCTTAGAGGAAGAC
 AGAAAACAGGTCTTGATCCCAACTGGCATTGACTTTTCTGATATTACTGCCAACTCTTTACTGTGCA
 CTGGATTGCTCCTCGAGCCACCATCACTGGTACAGGATCCGCCATCATCCCGAGCACTCAGTGGGAGA
 CCTCGAGAAGATCGGGTGGCCCACTCTCGGAATTCCATACCCTACCAACCTCACTCCAGGCACAGAGT
 ATGTGGTCAAGTATCGTTGCTCTTAAATGGCAGAGAGGAAAGTCCCTTATTGATTGGCCAACAAATCAACAGT
 TTCTGATGTTCCGAGGGACCTGGAAGTGTGCTGCGACCCCAACAGCCTACTGATCAGCTGGGATGCT
 CCTGCTGTACAGTGAGATATTACAGGATCACTTACGGAGAGACAGGAGGAAATAGCCCTGTCCAGGAGT
 TCACTGTGCTGGGAGCAAGTCTACAGCTACCATCAGCGGCTTAAACCTGGAGTTGATTATACCATCAC
 TGTGATGCTGTCACTGGCCGTGGAGACAGCCCGCAAGCAGCAAGCCAATTTCCATTAAATACCGAACA
 GAAATTGACAAACCATCCAGATGCAAGTACCGATGTTTACAGACAACAGCATTAGTGTCAAGTGGCTGC
 CTTCAAGTCCCCTGTTACTGGTTACAGAGTAACCACCACTCCCAAAAATGGACCAGGACCAACAAAAAC
 TAAAACCTGAGGTCCAGATCAAACAGAAATGACTATTGAAGGCTTGCAGCCACAGTGGAGTATGTGGTT
 AGTGTCTATGCTCAGAATCCAAGCGGAGAGAGTACGCCTCTGGTTACAGCTGCAGTAACCACTATTCCTG
 CACCAACTGACCTGAAGTTCACCTCAGGTACACCCACAAGCCTGAGCGCCAGTGGACACCACCAATGT
 TCAGCTCACTGGATATCGAGTGGGGTACCCCAAGGAGAAGACCGGACCAATGAAAGAAATCAACCTT
 GCTCCTGACAGCTCATCCGTGGTGTATCAGGACTTATGGTGGCCACCAATATGAAGTGAAGTGTCTATG

CTCTTAAGGACACTTTGACAAGCAGACCAGCTCAGGGAGTTGTCACCACTCTGGAGAATGTCAGCCCACC
AAGAAGGGCTCGTGTGACAGATGCTACTGAGACCACCATCACCATTAGCTGGAGAACCAAGACTGAGACG
ATCACTGGCTTCCAAGTTGATGCCGTTCCAGCCAATGGCCAGACTCCAATCCAGAGAACCATCAAGCCAG
ATGTCAGAAGCTACACCATCACAGGTTTACAACCAGGCACTGACTACAAGATCTACCTGTACACCTTGAA
TGACAAATGCTCGGAGCTCCCCTGTGGTCATCGACGCCCTCCACTGCCATTGATGCACCATCCAACCTGCGT
TTCCTGGCCACCACACCAATTCCTTGTGGTATCATGGCAGCCGCCACGTGCCAGGATTACCGGCTACA
TCATCAAGTATGAGAAGCCTGGGTCTCCTCCAGAGAAGTGGTCCCTCGGCCCCGCGCTGGTGTACAGAG
GGCTACTATTACTGGCCTGGAACCGGGAACCGAATATACAATTTATGTCATTGCCCTGAAGAATAATCAG
AAGAGCGAGCCCCTGATTGGAAGGAAAAAGACAGGACAAGAAGCTCTCTCTCAGACAACCATCTCATGGG
CCCCATCCAGGACACTTCTGAGTACATCATTTTCATGTCATCCTGTTGGCACTGATGAAGAACCCTTACA
GTTCCAGGGTTCCTGGAACCTTCTACCAGTGCCACTCTGACAGGCCCTCACCAGAGGTGCCACCTACAACATC
ATAGTGGAGGCACTGAAAGACCAGCAGAGGCATAAGGTTTCGGGAAGAGGTTGTTACCGTGGGCAACTCTG
TCAACGAAGGCTTGAACCAACCTACGGATGACTCGTGCTTTGACCCCTACACAGTTTCCCATTATGCCGT
TGGAGATGAGTGGGAACGAATGTCTGAATCAGGCTTTAACTGTTGTGCCAGTGCTTAGGCTTTGGAAGT
GGTCATTTAGATGTGATTCATCTAGATGGTGCATGACAATGGTGTGAAGTACAAGATTGGAGAGAAGT
GGGACCGTCAGGGAGAAAATGGCCAGATGATGAGCTGCACATGTCTTGGGAACGGAAAAGGAGAATTCAA
GTGTGACCCTCATGAGGCAACGTGTTATGATGATGGGAAGACATACCACGTAGGAGAACAGTGGCAGAAG
GAATATCTCGGTGCCATTTGCTCCTGCACATGCTTTGGAGGCCAGCGGGGCTGGCGCTGTGACAACTGCC
GCAGACCTGGGGGTGAACCCAGTCCCGAAGGCACTACTGGCCAGTCTACAACAGTATTCTCAGAGATA
CCATCAGAGAACAACACTAATGTTAATTGCCAATTGAGTGCTTCATGCCTTTAGATGTACAGGCTGAC
AGAGAAGATTCCCGAGAG

ACGCGTACGCGGCCGCTCGAG - GFP Tag - GTTTAA

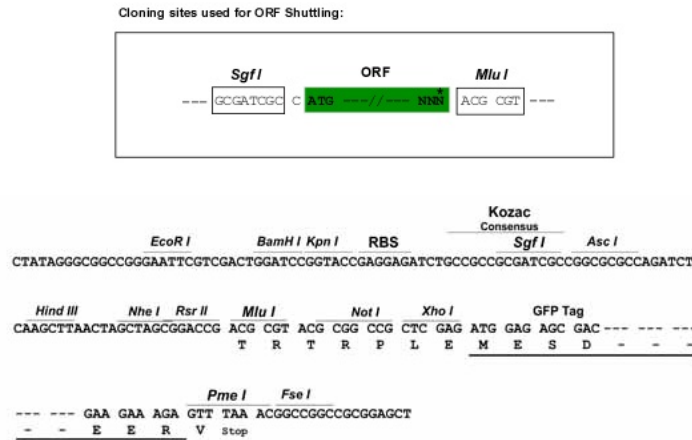
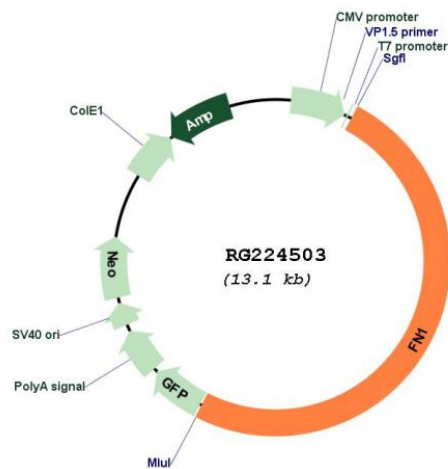
Protein Sequence: >RG224503 representing NM_212474
 Red=Cloning site Green=Tags(s)

```

MLRGPGLLLLLAVQCLGTAVPSTGASKSKRQAQQMVQPQSPVAVSQSKPGCYDNGKHYQINQQWERTYL
GNALVCTCYGGSRGFNCEKPEAEETCFDKYTGNTYRVGDTYERPKDSMIWDCTCIGAGRISCTIANR
CHEGGQSYKIGDTWRRPHETGGYMLECVCLGNGKGEWTKPIAEKCFDHAAGTSYVVGETWEKPYQGMM
VDCTCLGEGSGRITCTSRNRCNDQDTRTSYRIGDTWSKKNRGNLLQCICTGNRGEWK CERHTSVQTTT
SGSGPFTDVRAAVYQPQPHQPPPYGHCVTDSGVVYVSGMQWLKTQGNKQMLCTCLGNGVSCQETAVTQT
YGGNSNGEPCVLPFTYNGRTFYSCCTTEGRQDGHLCWSTTSNYEQDQKYSFCTDHTVLVQTRGNSGALC
HFPFLYNNHNYTDCTSEGRDNMKWCGTQNYDADQKFGFCPMAAHEEICTTNEGVMYRIGDQWDKQHDM
GHMMRCTCVGNRGEWTCIAYSQLRDQCI VDDITYNVNDFHHRHEEGHMLNCTCFGQGRGRWKC DPVDQ
CQDSETGTFYQIGDSWEKYVHGVRVYQCYCYGRGIGEWHCQPLQTYPSSSGPVEVFI TETSPQNSHPIQW
NAPQPSHISKYILRWRPKNSVGRWKEATIPGHLNSYTIKGLKPGVYVYEGQLISIQYQGHQEVTRDFTTT
STSTPVTNTVTGETTFFSPLVATSESVTEITASSFVSWVSASDTVSGFRVEYELSEEGDEPQYLDLPS
TATSVNIPDLLPGRKYIVNVYQI SEDGEQSLILSTSQTAPDAPPDPTVDQVDDTSIVVRSRQPAPITG
YRIVYSPSVEGSSTELNLPETANSVTLSDLQPGVQYNITII YAVEENQESTPVVIQGETTGT PRSDTVSP
RDLQFVEVTDVKVTIMWTPPE SAVTYRVDVIPVNL PGEHGQRLPISRNTFAEVTGLSPGVTYFYKVFVAV
SHGRESKPLTAQQTTKLDAPTNLQFVNEDSTVLVRWTPPRAQITGYRLTVGLTRRQPRQYVNGPSVSK
YPLRNLQPASEYTVSLVAIKGNQESPKATGVFTTLQPGSSIPPYNTEVTE TTIIVITWTPAPRIGFKLGV
PSQGEAPREVTSDSGSIVVSGLTPGV EYVYTIQVLRDQGERDAPIVNKVVTPSPPTNLHLEANPDTGV
LTVSWERSTTDPDITGYRITTTPTNGQQGNSLEEVVHADQSCTFDNLSPGLEYNVSVYTVKDDKESVPI
DTIIPAVPPPTDLRFTNIGPDMRVTWAPPPSIDL TNFLVRYSPVKNEEDVAELSI SPSDNAVVLTNLLP
GTEYVVS SVSYEQHESTPLRGRQKTGLD SPTGIDFSDITANSFVWHIAPRATITGYRIRHHPEHFSGR
PREDRVPHSRNSITLNLTPGTEYVVSIVALNGREE SPLLIGQQSTVSDVPRDLEVVAATPTSLLSWDA
PAVTVRYRITYGETGGNSPVQEFTVPGSKSTATISGLKPGVDYITVYAVTGRGDSPASSKPI SINYRT
EIDKPSMQVTDVQDNSISVKWLPSSSPVTGYRVTTTPKNGPGPTKTKTAGPDQTEMTIEGLQPTVEYVV
SVYAQNPSGESQPLVQTAVTTIPAPTDL KFTQVTPTSLSAQWTPPNVQLTGYRVRVTPKEKTGPMKEINL
APDSSSVVSGLMVATKYEVSVALKDTLTSRPAQGVVTTLENSPPRRARVTDATETTITISWRKTET
ITGFQVDAVPANGQTPIQRTIKPDVRSYITGLQPGTDYKIYLYLNDNARSSPVVIDASTAIDAPSNLR
FLATTPNSLLVSWQPPRARITGYIIKYEKPGSPPREVVPRPRPGVTEATITGLEPGTEYTIYVIALKNNQ
KSEPLIGRKKTGQEALSQTTISWAPFQDTSEYIISCHPVGTDDEEPLQFRVPGTSTSATLGLTRGATYNI
IVEALKDQQRHKVREEVTVGNSVNEGLNQPTDDSCFDPYTVSHYAVGDEWERMSESGFKLLCQCLGFGS
GHFRCDSSRWCHDNGVNYKIGEKWDRQGENQMMSCTCLGNGKGEFKCDPHEATCYDDGKTYHVGEQWQK
EYLGAI CSCTCFGGQRGWRCNCRPPGGEPSPEGTTGQSYNQYSQRYHQRTNTNVNCPICFMPDLVQAD
REDSRE
  
```

TRTRPLE - GFP Tag - V

Restriction Sites: Sgfl-MluI

Cloning Scheme:

Plasmid Map:


ACCN: NM_212474

ORF Size: 6528 bp

OTI Disclaimer: The molecular sequence of this clone aligns with the gene accession number as a point of reference only. However, individual transcript sequences of the same gene can differ through naturally occurring variations (e.g. polymorphisms), each with its own valid existence. This clone is substantially in agreement with the reference, but a complete review of all prevailing variants is recommended prior to use. [More info](#)

OTI Annotation: This clone was engineered to express the complete ORF with an expression tag. Expression varies depending on the nature of the gene.

Components:	The ORF clone is ion-exchange column purified and shipped in a 2D barcoded Matrix tube containing 10ug of transfection-ready, dried plasmid DNA (reconstitute with 100 ul of water).
Reconstitution Method:	<ol style="list-style-type: none">1. Centrifuge at 5,000xg for 5min.2. Carefully open the tube and add 100ul of sterile water to dissolve the DNA.3. Close the tube and incubate for 10 minutes at room temperature.4. Briefly vortex the tube and then do a quick spin (less than 5000xg) to concentrate the liquid at the bottom.5. Store the suspended plasmid at -20°C. The DNA is stable for at least one year from date of shipping when stored at -20°C.
RefSeq:	NM_212474.2
RefSeq Size:	7912 bp
RefSeq ORF:	6531 bp
Locus ID:	2335
UniProt ID:	P02751
Cytogenetics:	2q35
Protein Families:	Druggable Genome, ES Cell Differentiation/IPS, Secreted Protein
Protein Pathways:	ECM-receptor interaction, Focal adhesion, Pathways in cancer, Regulation of actin cytoskeleton, Small cell lung cancer
Gene Summary:	This gene encodes fibronectin, a glycoprotein present in a soluble dimeric form in plasma, and in a dimeric or multimeric form at the cell surface and in extracellular matrix. The encoded preproprotein is proteolytically processed to generate the mature protein. Fibronectin is involved in cell adhesion and migration processes including embryogenesis, wound healing, blood coagulation, host defense, and metastasis. The gene has three regions subject to alternative splicing, with the potential to produce 20 different transcript variants, at least one of which encodes an isoform that undergoes proteolytic processing. The full-length nature of some variants has not been determined. [provided by RefSeq, Jan 2016]