

Product datasheet for **RG224496**

Uromuroid (UMOD) (NM_001008389) Human Tagged ORF Clone

Product data:

Product Type:	Expression Plasmids
Product Name:	Uromuroid (UMOD) (NM_001008389) Human Tagged ORF Clone
Tag:	TurboGFP
Symbol:	UMOD
Synonyms:	ADMCKD2; ADTKD1; FJHN; HNFJ; HNFJ1; MCKD2; THGP; THP
Mammalian Cell Selection:	Neomycin
Vector:	pCMV6-AC-GFP (PS100010)
E. coli Selection:	Ampicillin (100 ug/mL)



[View online »](#)

ORF Nucleotide Sequence:

>RG224496 representing NM_001008389
 Red=Cloning site Blue=ORF Green=Tags(s)

TTTTGTAATACGACTCACTATAGGGCGGCCGGAATTCGTCGACTGGATCCGGTACCGAGGAGATCTGCC
 GCC**CGGATCGCC**

ATGGGGCAGCCATCTCTGACTTGGATGCTGATGGTGGTGGCCTCTTGGTTTCATCACAACCTGCAGCCA
 CTGACACCTCAGAAGCAAGATGGTCTCTGAATGTCACAGCAATGCCACCTGCACGGAGGATGAGGCCGT
 TACGACGTGCACCTGTCAGGAGGGCTTACC GGCGATGGCCTGACCTGCGTGGACCTGGATGAGTGCGCC
 ATTCCTGGAGCTCACAACCTGCTCCGCCAACAGCAGCTGCGTAAACACGCCAGGCTCCTTCTCCTGCGTCT
 GCCCCGAAGGCTTCCGCCTGTCGCCCGGTCTCGGCTGCACAGACGTGGATGAGTGCCTGAGCCTGGGCT
 TAGCCACTGCCACGCCCTGGCCACATGTGTCAATGTGGTGGCAGCTACTTGTGCGTATGCCCGCGGGC
 TACCGGGGGATGGATGGCACTGTGAGTGTCCCCGGCTCTGCGGGCCGGGTGGACTGCGTCCCCG
 AGGGCAGCGCTCGTGTGCGCGGATCCGTGCCAGGCGCACCCCTGGACGAGTACTGGCGCAGCAC
 CGAGTACGGGAGGGCTACGCCCTGCGACACGGACCTGCGCGGCTGGTACCCTTCGTGGCCAGGGCGGT
 GCGCGCATGGCCGAGACCTGCGTGCCAGTCTGCGCTGCAACACGGCCGCCCATGTGGCTCAATGGCA
 CGCATCCGTCCAGCGACGAGGGCATCGTGAGCCGCAAGGCTGCGCGCACTGGAGCGGCCACTGCTGCCT
 GTGGGATGCGTCCGTCCAGGTGAAGGCCTGTGCCGGCGGCTACTACGTCTACAACCTGACAGCGCCCCC
 GAGTGTACCTGGCGTACTGCACAGACCCAGCTCCGTGGAGGGGACGTGTGAGGAGTGCAGTATAGACG
 AGGACTGCAAAATCGAATAATGGCAGATGGCACTGCCAGTGCAACAGGACTTCAACATCACTGATATCTC
 CCTCTGGAGCACAGGCTGGAATGTGGGGCCAATGACATGAAGGTGTGCTGGGCAAGTCCAGCTGAAG
 AGTCTGGGCTTCGACAAGTCTTACGTACCTGAGTGACAGCCGGTGTCTGGGCTTCAATGACAGAGACA
 ACCGGACTGGGTCTGTAGTGACCCACGCCGGGATGGCCCTGTGGGACAGTGTGACGGAATGA
 AACCCATGCCACTTACAGCAACACCCTCTACCTGGCAGATGAGATCATCATCCGTGACCTCAACATCAAA
 ATCAACTTTGCATGCTCCTACCCCTGGACATGAAAGTCAAGCCTGAAGACCGCCCTACAGCCAATGGTCA
 GTGCTCTAAACATCAGAGTGGGCGGACCGGCATGTTACCGTGCAGGATGGCGCTTCCAGACCCCTTC
 CTACACGACGCCCTACCAAGGCTCCTCCGTGACACTGTCCACTGAGGCTTTTCTCTACGTGGCACCATG
 TTGGATGGGGGACCTGTCCCGATTTGCACTGCTCATGACCAACTGCTATGCCACACCCAGTAGCAATG
 CCACGGACCCCTGAAGTACTTTCATCATCCAGGACAGATGCCACACACTAGAGACTCAACTATCCAAGT
 GGTGGAGAAATGGGAGTCTCCAGGGCCGATTTCCGTCCAGATGTTCCGGTTTGTGGAAACTATGAC
 CTAGTCTACCTGCACTGTGAAGTCTATCTGTGACACCATGAATGAAAAGTGAAGCCTACCTGCTCTG
 GGACCAGATCCGAAGTGGGAGTGTATAGATCAATCCCGTGTCCCTGAACCTGGGTCCTCACACGGAA
 AGGTGTCCAGGCCACAGTCTCAAGGGCTTTTAGCAGCTTGGGGCTCTGAAAGTCTGGCTGCCTCTGCT
 CTCTCGGCCACCTTGACCCTGACTTTTCAG

ACGCGTACGCGGCCGCTCGAG – GFP Tag – GTTTAA

Protein Sequence:

>RG224496 representing NM_001008389
 Red=Cloning site Green=Tags(s)

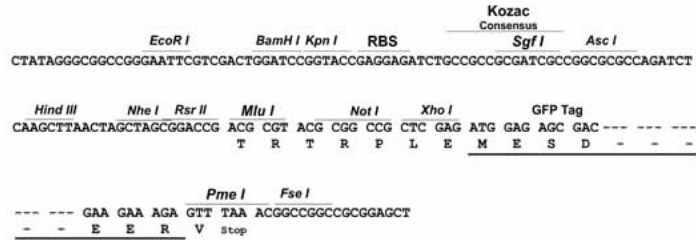
MGQPSL TWMLMVVVASWFIITTAATDTSEARWCSEHSNATCTEDEAVTTCTCQEGFTGDGLTCVDLDECA
 IPGAHNCSANSSCVNTPGSFSCVCEPGRFRLSPGLGCTDVDECAEPGLSHCHALATCVNVVGSYLVCVCPAG
 YRGDGHWCCESPGSCGGLDCVPEGDALVCADPCQAHRTLDEYWRSTEYGEYACDLDLRGWYRFVGGG
 ARMAETCVPLRCNTAAPMVLNTHPSSDEGIVSRKACAHWSGHCLWDASVQVKACAGGYVYVNL TAPP
 ECHLAYCTDPSSVEGTCEECSIDEDCKSNNGRWHCQCKQDFNITDISLLEHRLECGANDMKVSLGKQLK
 SLGFDKVFMYLSDSRCSGFNDRNDRDWVSVVTPARDGPCGTVLTRNETHATYSNTLYLADEIIIRDNLNIK
 INFACSYPLDMKVSLKTALQPMVSALNIRVGGTGMFTVRMALFQTPSYTQPYQGSVTLSTEAFLYVGMT
 LDGGDLRSRFAALLMTNCYATPSSNATDPLKYFIIQDRCPHTRDSTIQVVENGESSQGRFSVQMRFRAGNYD
 LVYLHCEVYLCDTMNEKCKPTCSGTRFRFRSGSVIDQSRVNLNLPITRKGVQATVSRAFFSSLGLLKVLPLL
 LSATLTLTFQ

TRTRPLE – GFP Tag – V

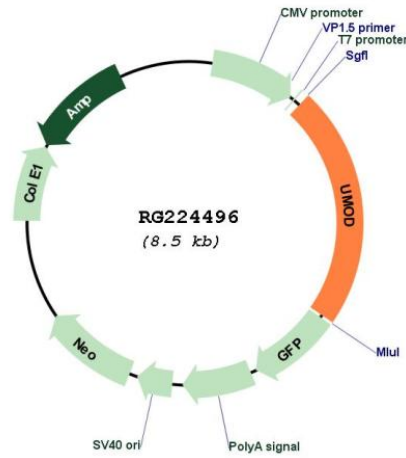
Restriction Sites: SgfI-MluI

Cloning Scheme:

Cloning sites used for ORF Shutting:



Plasmid Map:



ACCN: NM_001008389

ORF Size: 1920 bp

OTI Disclaimer:	The molecular sequence of this clone aligns with the gene accession number as a point of reference only. However, individual transcript sequences of the same gene can differ through naturally occurring variations (e.g. polymorphisms), each with its own valid existence. This clone is substantially in agreement with the reference, but a complete review of all prevailing variants is recommended prior to use. More info
OTI Annotation:	This clone was engineered to express the complete ORF with an expression tag. Expression varies depending on the nature of the gene.
Components:	The ORF clone is ion-exchange column purified and shipped in a 2D barcoded Matrix tube containing 10ug of transfection-ready, dried plasmid DNA (reconstitute with 100 ul of water).
Reconstitution Method:	<ol style="list-style-type: none">1. Centrifuge at 5,000xg for 5min.2. Carefully open the tube and add 100ul of sterile water to dissolve the DNA.3. Close the tube and incubate for 10 minutes at room temperature.4. Briefly vortex the tube and then do a quick spin (less than 5000xg) to concentrate the liquid at the bottom.5. Store the suspended plasmid at -20°C. The DNA is stable for at least one year from date of shipping when stored at -20°C.
RefSeq:	NM_001008389.3
RefSeq Size:	2264 bp
RefSeq ORF:	1923 bp
Locus ID:	7369
UniProt ID:	P07911
Cytogenetics:	16p12.3
Gene Summary:	The protein encoded by this gene is the most abundant protein in mammalian urine under physiological conditions. Its excretion in urine follows proteolytic cleavage of the ectodomain of its glycosyl phosphatidylinositol-anchored counterpart that is situated on the luminal cell surface of the loop of Henle. This protein may act as a constitutive inhibitor of calcium crystallization in renal fluids. Excretion of this protein in urine may provide defense against urinary tract infections caused by uropathogenic bacteria. Defects in this gene are associated with the renal disorders medullary cystic kidney disease-2 (MCKD2), glomerulocystic kidney disease with hyperuricemia and isosthenuria (GCKDHI), and familial juvenile hyperuricemic nephropathy (FJHN). Alternative splicing of this gene results in multiple transcript variants. [provided by RefSeq, Jul 2013]