

## Product datasheet for **RG224495**

### ORC5L (ORC5) (NM\_181747) Human Tagged ORF Clone

#### Product data:

**Product Type:** Expression Plasmids  
**Product Name:** ORC5L (ORC5) (NM\_181747) Human Tagged ORF Clone  
**Tag:** TurboGFP  
**Symbol:** ORC5  
**Synonyms:** ORC5L; ORC5P; ORC5T; PPP1R117  
**Mammalian Cell Selection:** Neomycin  
**Vector:** pCMV6-AC-GFP (PS100010)  
**E. coli Selection:** Ampicillin (100 ug/mL)  
**ORF Nucleotide Sequence:** >RG224495 representing NM\_181747  
 Red=Cloning site Blue=ORF Green=Tags(s)

TTTTGTAATACGACTCACTATAGGGCGGCCGGAATTCGTCGACTGGATCCGGTACCGAGGAGATCTGCC  
 GCC**CGATCGCC**

ATGCCCACTTGGAAAACGTGGTGCTTTGTGCGGAGTCTCAAGTGTCCATCTTGCAGTCCTGTTTGGAG  
 AGAGACATCATTCAGCTTCCATCCATTTTTATTTATGGACATACTGCTAGTGGAAAGACCTATGTAAC  
 ACAACGTTGTTGAAAACCTTAGAGCTCCACATGTGTTGTGAATTGTGTTGAATGCTTACATTGAGG  
 CTGCTTTTGAACAAATTTAAACAAATGAATCATCTTAGTTCTTCAGAGGATGGATGTTCTACTGAAA  
 TAACCTGTGAAACATTTAATGACTTTGTCGCTTGTAAACAAGTAACCACAGCTGAAAATCTTAAAGA  
 TCAGACTGTATATATTGTTCTAGATAAAGCAGAGTATCTAAGAGATATGGAAGCAAATCTTTGCGCTGGA  
 TTTCTTAGATTACAAGAATTGGCTGACAGAAATGTGACTGTTCTCTTTCTCAGTGAATTTGTTGGAAA  
 AGTTTCGTCCAAATACTGGATGCTTTGAGCCGTTTGTCTTATATTTCCCTGATTACAGCATAGGCAACCT  
 TCAAAAGATCCTGTCCCATGATCATCTCCAGAGTATTCAGCTGATTTCTATGCTGCCTACATTAACATT  
 CTTCTGGAGTTTCTACACTGTTTGTGCGAGATTTGAAAGAGCTCAGACATCTGGCAGTACTTAATTTTC  
 CTAATATTGTGAACCCGTGGTTAAAGGAGAAGCAAGTGAACGTGATACTCGAAACTGTGGAGAAATAT  
 TGAACCTCATTTGAAGAAAGCTATGCAGACTGTTTATCTCAGGAAATATCAAGTCCCAGTGGGAAAAG  
 CTACAGAAAGATGACACAGATCCGGGCAACTGAAAGGTATCAGAGGAAGTATTGAGACAGTTACCGGAG  
 ATACTTCTCAGCTAATTATCAAGATACTAAAGTTAATACTAAAGAGCATTTCAGTCAGGAAA

**ACGCGT**ACGCGGCCGCTCGAG - GFP Tag - GTTTAA



[View online »](#)

**Protein Sequence:** >RG224495 representing NM\_181747  
Red=Cloning site Green=Tags(s)

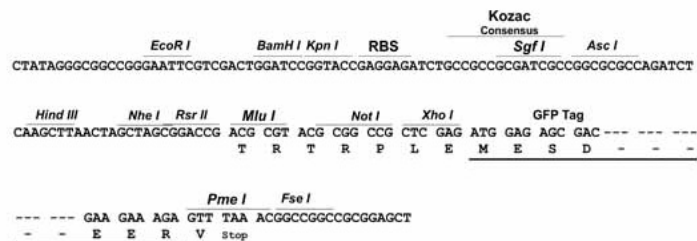
MPHLENNVLCRESQVSILQSLFGERHHFSFPSIFIYGHASGKTYVTQTLLKTLELPHVFNVCVECFLLR  
 LLLLEQILNKLNLHLSSEEDGCSTEITCETFNDFVRLFKQVTTAENLKDQTVYIVLDKAEYLDRMEANLLPG  
 FLRLQELADRNVTVFLFLSEIVWEKFRPNTGCFEPFVL YFPDYSIGNLQKILSHDHPPEYSADFYAAYINI  
 LLGVFYTVCRDLKELRHLAVLNFPKYCEPVVKGEASERDTRKLWRNIEPHLKKAMQTVYLREISSSQWEK  
 LQKDDTDPGQLKGI RGS IETVTGDTSSANYQDTKVNTKEHSVRK

TRTRPLE - GFP Tag - V

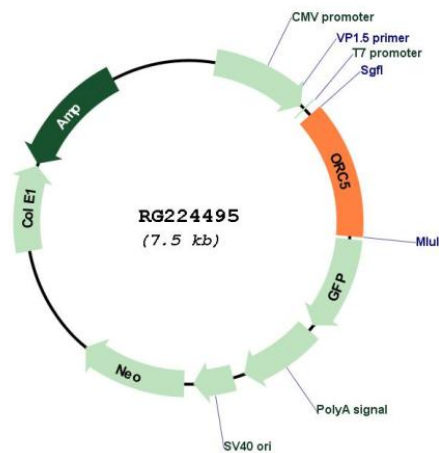
**Restriction Sites:** SgfI-MluI

**Cloning Scheme:**

Cloning sites used for ORF Shuttling:



**Plasmid Map:**



**ACCN:** NM\_181747

**ORF Size:** 972 bp

<b>OTI Disclaimer:</b>	The molecular sequence of this clone aligns with the gene accession number as a point of reference only. However, individual transcript sequences of the same gene can differ through naturally occurring variations (e.g. polymorphisms), each with its own valid existence. This clone is substantially in agreement with the reference, but a complete review of all prevailing variants is recommended prior to use. <a href="#">More info</a>
<b>OTI Annotation:</b>	This clone was engineered to express the complete ORF with an expression tag. Expression varies depending on the nature of the gene.
<b>Components:</b>	The ORF clone is ion-exchange column purified and shipped in a 2D barcoded Matrix tube containing 10ug of transfection-ready, dried plasmid DNA (reconstitute with 100 ul of water).
<b>Reconstitution Method:</b>	<ol style="list-style-type: none"><li>1. Centrifuge at 5,000xg for 5min.</li><li>2. Carefully open the tube and add 100ul of sterile water to dissolve the DNA.</li><li>3. Close the tube and incubate for 10 minutes at room temperature.</li><li>4. Briefly vortex the tube and then do a quick spin (less than 5000xg) to concentrate the liquid at the bottom.</li><li>5. Store the suspended plasmid at -20°C. The DNA is stable for at least one year from date of shipping when stored at -20°C.</li></ol>
<b>RefSeq:</b>	<a href="#">NM_181747.3</a> , <a href="#">NP_859531.1</a>
<b>RefSeq Size:</b>	1334 bp
<b>RefSeq ORF:</b>	975 bp
<b>Locus ID:</b>	5001
<b>UniProt ID:</b>	<a href="#">O43913</a>
<b>Cytogenetics:</b>	7q22.1-q22.2
<b>Protein Pathways:</b>	Cell cycle
<b>Gene Summary:</b>	The origin recognition complex (ORC) is a highly conserved six subunit protein complex essential for the initiation of the DNA replication in eukaryotic cells. Studies in yeast demonstrated that ORC binds specifically to origins of replication and serves as a platform for the assembly of additional initiation factors such as Cdc6 and Mcm proteins. The protein encoded by this gene is a subunit of the ORC complex. Alternatively spliced transcript variants encoding distinct isoforms have been described. [provided by RefSeq, Oct 2010]