

Product datasheet for **RG224484**

GIPC (GIPC1) (NM_202494) Human Tagged ORF Clone

Product data:

Product Type:	Expression Plasmids
Product Name:	GIPC (GIPC1) (NM_202494) Human Tagged ORF Clone
Tag:	TurboGFP
Symbol:	GIPC1
Synonyms:	C19orf3; GIPC; GLUT1CBP; Hs.6454; IIP-1; NIP; OPDM2; RGS19IP1; SEMCAP; SYNECTIN; SYNECTIN; TIP-2
Mammalian Cell Selection:	Neomycin
Vector:	pCMV6-AC-GFP (PS100010)
E. coli Selection:	Ampicillin (100 ug/mL)
ORF Nucleotide Sequence:	>RG224484 representing NM_202494 Red=Cloning site Blue=ORF Green=Tags(s)

TTTTGTAATACGACTCACTATAGGGCGGCCGGAATTCGTCGACTGGATCCGGTACCGAGGAGATCTGCC
GCC**GCGATCGCC**

ATGTTCTGCACCCTGAACACCCACAAAGTGGACATGGACAAGCTCCTGGGGGCCAGATCGGGCTGGAGG
ACTTCATCTTCGCCCACGTGAAGGGGCAGCGCAAGGAGGTGGAGGTGTTCAAGTCGGAGGATGCACTCGG
GCTCACCATCACGGACAACGGGGCTGGCTACGCCCTTCATCAAGCGCATCAAGGAGGGCAGCGTGATCGAC
CACATCCACCTCATCAGCGTGGGCGACATGATCGAGGCCATTAAACGGGCAGAGCCTGCTGGGCTGCCGGC
ACTACGAGGTGGCCGGCTGCTCAAGGAGCTGCCCGAGGCCGTACCTTCACGCTGAAGCTCACGGAGCC
TCGCAAGGCCCTTCGACATGATCAGCCAGCGTTCAGCGGGTGGCCGCCCTGGCTCTGGCCACAACCTGGC
ACTGGCCGAGGGACCCTGCGGCTCCGATCCCGGGGCCCGCCACGGTGGAGGATCTGCCCTCGCCTTTG
AAGAGAAGGCCATTGAGAAGGTGGATGACCTGCTGGAGAGTTACATGGGTATCAGGGACACGGAGCTGGC
GGCCACCATGGTGGAGCTGGGAAAGGACAAAAGGAACCCGGATGAGCTGGCCGAGGCCCTGGACGAACGG
CTGGGTGACTTTGCCCTCCCTGACGAGTTCGTCTTTGACGTCTGGGGCGCCATTGGGGACGCCAAGGTGCG
GCCGCTAC

ACGCGTACGCGGCCGCTCGAG - GFP Tag - GTTTAA



[View online »](#)

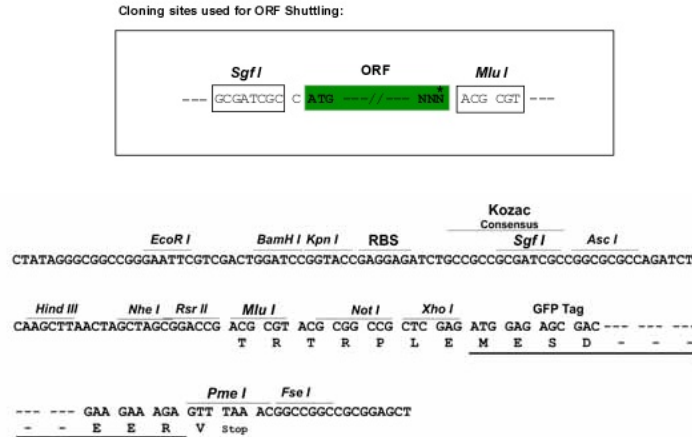
Protein Sequence: >RG224484 representing NM_202494
Red=Cloning site Green=Tags(s)

MFCTLNTHKVDMDKLLGGQIGLEDFIFAHVKGQRKEVEVFKSEDALGLTITDNGAGYAFIKRIKEGSVID
 HIHLISVGDMEIANGQSLLGCRHYEVARLLKELPRGRFTLKLTEPRKAFDMISQRSAGGRPGSGPQLG
 TGRGTLRLRSRGPATVEDLPSAFEKAIEKVDDLLESYMGIRDTELAATMVELGKDKRNPDELAELDER
 LGDFAFPDEFVFDVWGAIGDAKVGRY

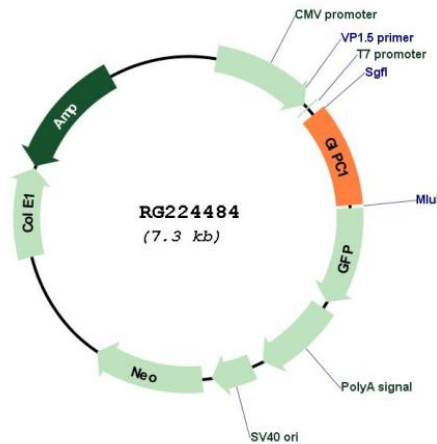
TRTRPLE - GFP Tag - V

Restriction Sites: SgfI-MluI

Cloning Scheme:



Plasmid Map:



ACCN: NM_202494

ORF Size: 708 bp

OTI Disclaimer:	The molecular sequence of this clone aligns with the gene accession number as a point of reference only. However, individual transcript sequences of the same gene can differ through naturally occurring variations (e.g. polymorphisms), each with its own valid existence. This clone is substantially in agreement with the reference, but a complete review of all prevailing variants is recommended prior to use. More info
OTI Annotation:	This clone was engineered to express the complete ORF with an expression tag. Expression varies depending on the nature of the gene.
Components:	The ORF clone is ion-exchange column purified and shipped in a 2D barcoded Matrix tube containing 10ug of transfection-ready, dried plasmid DNA (reconstitute with 100 ul of water).
Reconstitution Method:	<ol style="list-style-type: none">1. Centrifuge at 5,000xg for 5min.2. Carefully open the tube and add 100ul of sterile water to dissolve the DNA.3. Close the tube and incubate for 10 minutes at room temperature.4. Briefly vortex the tube and then do a quick spin (less than 5000xg) to concentrate the liquid at the bottom.5. Store the suspended plasmid at -20°C. The DNA is stable for at least one year from date of shipping when stored at -20°C.
RefSeq:	NM_202494.2 , NP_974223.1
RefSeq Size:	1502 bp
RefSeq ORF:	711 bp
Locus ID:	10755
UniProt ID:	O14908
Cytogenetics:	19p13.12
Protein Families:	Druggable Genome
Gene Summary:	GIPC1 is a scaffolding protein that regulates cell surface receptor expression and trafficking (Lee et al., 2008 [PubMed 18775991]).[supplied by OMIM, Apr 2009]