

Product datasheet for **RG224475**

Neurofilament (NEFM) (NM_005382) Human Tagged ORF Clone

Product data:

Product Type:	Expression Plasmids
Product Name:	Neurofilament (NEFM) (NM_005382) Human Tagged ORF Clone
Tag:	TurboGFP
Symbol:	Neurofilament
Synonyms:	NEF3; NF-M; NFM
Mammalian Cell Selection:	Neomycin
Vector:	pCMV6-AC-GFP (PS100010)
E. coli Selection:	Ampicillin (100 ug/mL)



[View online »](#)

ORF Nucleotide Sequence:

>RG224475 representing NM_005382
 Red=Cloning site Blue=ORF Green=Tags(s)

TTTTGTAATACGACTCACTATAGGGCGGCCGGGAATTCGTCGACTGGATCCGGTACCGAGGAGATCTGCC
 GCC**CGGATCGCC**

ATGAGCTACACGTTGGACTCGCTGGGCAACCCGTCGCTACCGCGGGTAACCGAGACCCGCTCGAGCT
 TCAGCCGCGTCAGCGGCTCCCCGTCAGTGGCTTCCGCTCGCAGTCGTGGTCCCGCGGCTCGCCAGCAC
 CGTGTCTCTCTATAAGCGCAGCATGCTCGCCCCGCGCTCGTTACAGCTCGGCCATGCTCAGCTCC
 GCCGAGAGCAGCCTTGACTTCAGCCAGTCTCGTCCCTGCTCAACGGCGGCTCCGGACCCGGCGGCGACT
 ACAAGCTGTCCCCTCAACGAGAAGGAGCAGCTGCAGGGGCTGAACGACCGCTTTGCCGCTACATAGA
 GAAGGTGCACTACCTGGAGCAGCAGAATAAGGAGATTGAGGCGGAGATCCAGGCGCTGCGGCAGAAGCAG
 GCCTCGCACGCCAGCTGGGCGACGCTACGACCAGGAGATCCGCGAGCTGCGCGCCACCCTGGAGATGG
 TGAACCACGAGAAGGCTCAGGTGACGCTGGACTCGGACCCTGGAGGAAGACATCCACCGGCTCAAGGA
 GCGCTTTGAGGAGAGGCGCGGTTGCGCGACGACACTGAGGCGGCCATCCGCGCGCTGCGCAAAGACATC
 GAGGAGGCGTTCGCTGGTCAAGGTGGAGCTGGACAAGAAGGTGCAGTCGTCGAGGATGAGGTGGCCTTCC
 TGGCGAGCAACCACGAGGAGGAGGTGGCCGACCTTCTGGCCCAGATCCAGGCATCGCACATCACGGTGA
 GCGCAAAGACTACCTGAAGACAGACATCTCGACGGCGCTGAAGGAAATCCGCTCCAGCTCGAAAGCCAC
 TCAGACCAAGAAATATGCACCAGGCCGAAGAGTGGTTCAAATGCCGCTACGCCAAGCTACCGAGGCGGCCG
 AGCAGAACAAAGGAGGCCATCCGCTCCGCCAAGGAAGAGATCGCCGAGTACCGGCGCCAGCTGCAGTCCAA
 GAGCATCGAGCTAGAGTCGGTGCAGGACCAAGGAGTCCCTGGAGCGGAGCTCAGCGACATCGAGGAG
 CGCCACAACCACGACCTCAGCAGCTACCAGGACCCATCCAGCAGCTGGAAAATGAGCTTCGGGGCACAA
 AGTGGAAAATGGCTCGTCAATTTGCGCGAATACCAGGACCTCCTCAACGTCAAGATGGCTTGGATATAGA
 AATCGCTGCGTACAGAAAACCTCTGGAGGGTGAAGAGACTAGATTTAGCACATTTGCAGGAAGCATCACT
 GGGCCACTGTATACACACCGACCCCAATCACAATATCCAGTAAGATTACAGAAAACCAAGGTGGAAGCTC
 CCAAGCTTAAGGTCCAACACAAATTTGTGAGGAGATCATAGAGGAAACCAAAGTGGAGGATGAGAAGTC
 AGAAATGGAAGAGGCCCTGACAGCCATTACAGAGGAATTGGCCGTTTCCATGAAGGAAGAGAAGAAAGAA
 GCAGCAGAAGAAAAGGAAGGAACCCGAAGCTGAAGAAGAAGAGTAGCTGCCAAAAGTCTCCAGTGA
 AAGCAACTGCACCTGAAGTTAAGAAGAGGAAGGGGAAAAGGAGGAAGAAGAAGGCCAGGAAGAAGAGGA
 GGAAGAAGATGAGGGAGCTAAGTCAGACCAAGCCGAAGAGGGAGGATCCGAGAAGGAAGGCTCTAGTGAA
 AAAGAGGAAGGTGAGCAGGAAGAAGGAGAAACAGAAGCTGAAGCTGAAGGAGAGGAAGCCGAAGCTAAAG
 AGGAAAAGAAAGTGGAGGAAAAGAGTGAAGGAGTGGCTACCAAGGAGGAGCTGGTGGCAGATGCCAAGGT
 GGAAAAGCCAGAAAAGCCAAGTCTCCTGTGCCAAAATCACCAGTGAAGAGAAAAGGCAAGTCTCCTGTG
 CCCAAGTCAACAGTGAAGAGAAAAGGCAAGTCTCCTGTGCCAAGTCAACAGTGAAGAGAAAAGGCAAGT
 CTCCTGTGCCAAATCACCAGTGAAGAGAAAAGGCAAGTCTCCTGTGTCAAAATCACCAGTGAAGAGAA
 AGCCAAATCTCCTGTGCCAAAATCACCAGTGAAGAGGCAAAAGTCAAAGCAGAAGTGGGGAAAGGTGAA
 CAGAAAGAGGAAGAAGAAAAGGAAGTCAAGGAAGTCCCAAGGAAGAGAAGGTAGAGAAAAGGAAGAGA
 AACCAAGGATGTGCCAGAGAAGAAGAAAGCTGAGTCCCCTGTAAGGAGGAAGCTGTGGCAGAGGTGGT
 CACCATCACCAAATCGGTAAAGGTGCCTTGGAGAAAAGAGACCAAGAAGAGGGGAAGCCACTGCAGCAG
 GAGAAAAGAGAAGGAGAAAAGCGGGAGGAGAGGGAGGAAGTGAAGGAGGAAGGAGTATAAAGGTGCCAAGG
 GATCCAGGAAGGAAGACATAGCTGTCAATGGGGAGGTAGAAGAAAAGAGGAGGTAGAGCAGGAGACCAA
 GGAAAAGGCAAGTGGGAGGAAGAGGAGAAAAGCGTGTGACCAATGGCCTAGACTTGAAGCCAGCAGAT
 GAAAAGAGGGGGTGTAAAAGTGAAGGAGAAAAGTGGTGGTGACCAAAACGGTAGAAAAAATCACCAGTG
 AGGGGGGAGATGGTGTACCAAATACATCACTAAATCTGTAACCGTCACTCAAAGGTTGAAGAGCATGA
 AGAGACCTTTGAGGAGAACTAGTGTCTACTAAAAGGTAGAAAAGTCACTTACACGCCATAGTAAAG
 GAAGTCAACCAGAGTGAC

AGCGGACCGACGCGTACGCGGCCGCTCGAG – GFP Tag – GTTTAA

Protein Sequence: >RG224475 representing NM_005382
 Red=Cloning site Green=Tags(s)

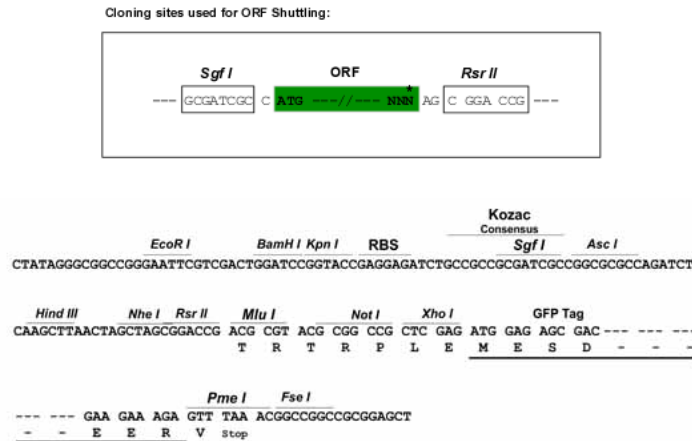
```

MSYTLDSLGNPSAYRRVTETRSSFSRVSGSPSSGFRSQSWSRGPSTVSSSYKRSMLAPRLAYSSAMLSS
AESSLDFSQSSSLLNGSGPGGDYKLSRSNEKEQLQGLNDRFAGYIEKVHYLEQQNKEIEAEIQALRQKQ
ASHAQLGDAYDQEIRELRATLEMVNHEKAQVQLDSDHLEEDIHRLKERFEEEEARLRDDTEAAIRALRKDI
EEASLVKVELDKKVQSLQDEVAFLRSNHEEEVADLLAQIQASHITVERKDYLKTDISTALKEIRSQLESH
SDQNMHQAEWFKCRYAKLTEAAEQNKEAIRSAKEEIAEYRRQLQSKSIELESVRGTKESLERQLSDIEE
RHNHDLSSYQDTTIQLENELRGTKWEMARHLREYQDLLNVKMALDIEIAAYRKLLEGEETRFSTFAGSIT
GPLYTHRPPITISSKIQTKVEAPKLVQHKFVEEIIIEETKVEDEKSEMEEALTAITEELAVSMKEEKKE
AAEEEEPEAEVEEVAAKKSPVKATAPEVKEEKEEKEEVEEVEEVEEVEEVEEVEEVEEVEEVEEVEE
KEEGEQEEGETEAEAEGEAEAEKKEKVEEKSEEVATKEELVADAKVEKPEKAKSPVPKSPVEEKGKSPV
PKSPVEEKGKSPVPKSPVEEKGKSPVPKSPVEEKGKSPVSKSPVEEKAKSPVPKSPVEEAKSKAEVKGGE
QKEEEKEVKEAPKEEKVEKKEEKPKDVPEKKAESPVKEEVAEVVTTITKSVKHLEKETKEEGKPLQQ
EKEKEKAGGEGGSEEGSDKGAKGSRKEDIAVNGEVEGKEEVEQETKEKSGREEEKGVVNTGLDLSPAD
EKKGGDKSEEVVTKTVEKITSEGGDGTKYITKSVTVTQKVEEHEETFEELVSTKKVEKVTSHAIVK
EVTQSD
  
```

SGPTRRRLE - GFP Tag - V

Restriction Sites: SgfI-RsrII

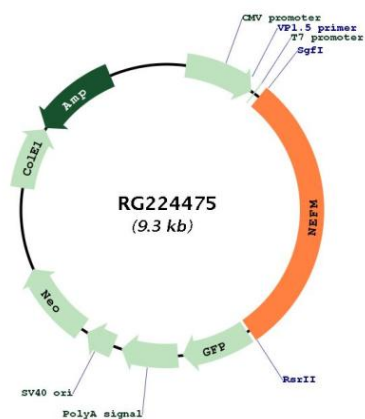
Cloning Scheme:



ACCN: NM_005382

ORF Size:	2748 bp
OTI Disclaimer:	<p>Due to the inherent nature of this plasmid, standard methods to replicate additional amounts of DNA in E. coli are highly likely to result in mutations and/or rearrangements. Therefore, OriGene does not guarantee the capability to replicate this plasmid DNA. Additional amounts of DNA can be purchased from OriGene with batch-specific, full-sequence verification at a reduced cost. Please contact our customer care team at custsupport@origene.com or by calling 301.340.3188 option 3 for pricing and delivery.</p> <p>The molecular sequence of this clone aligns with the gene accession number as a point of reference only. However, individual transcript sequences of the same gene can differ through naturally occurring variations (e.g. polymorphisms), each with its own valid existence. This clone is substantially in agreement with the reference, but a complete review of all prevailing variants is recommended prior to use. More info</p>
OTI Annotation:	This clone was engineered to express the complete ORF with an expression tag. Expression varies depending on the nature of the gene.
Components:	The ORF clone is ion-exchange column purified and shipped in a 2D barcoded Matrix tube containing 10ug of transfection-ready, dried plasmid DNA (reconstitute with 100 ul of water).
Reconstitution Method:	<ol style="list-style-type: none"> 1. Centrifuge at 5,000xg for 5min. 2. Carefully open the tube and add 100ul of sterile water to dissolve the DNA. 3. Close the tube and incubate for 10 minutes at room temperature. 4. Briefly vortex the tube and then do a quick spin (less than 5000xg) to concentrate the liquid at the bottom. 5. Store the suspended plasmid at -20°C. The DNA is stable for at least one year from date of shipping when stored at -20°C.
RefSeq:	NM_005382.1 , NP_005373.1
RefSeq Size:	3238 bp
RefSeq ORF:	2751 bp
Locus ID:	4741
UniProt ID:	P07197
Cytogenetics:	8p21.2
Domains:	filament, filament_head
Protein Pathways:	Amyotrophic lateral sclerosis (ALS)
Gene Summary:	Neurofilaments are type IV intermediate filament heteropolymers composed of light, medium, and heavy chains. Neurofilaments comprise the axoskeleton and functionally maintain neuronal caliber. They may also play a role in intracellular transport to axons and dendrites. This gene encodes the medium neurofilament protein. This protein is commonly used as a biomarker of neuronal damage. Alternative splicing results in multiple transcript variants encoding distinct isoforms. [provided by RefSeq, Oct 2008]

Product images:



Circular map for RG224475