

## Product datasheet for **RG224469**

### SFMBT1 (NM\_001005158) Human Tagged ORF Clone

#### Product data:

|                           |  |
|---------------------------|--|
| Product Type:             | Expression Plasmids                          |
| Product Name:             | SFMBT1 (NM_001005158) Human Tagged ORF Clone |
| Tag:                      | TurboGFP                                     |
| Symbol:                   | SFMBT1                                       |
| Synonyms:                 | RU1; SFMBT                                   |
| Mammalian Cell Selection: | Neomycin                                     |
| Vector:                   | pCMV6-AC-GFP (PS100010)                      |
| E. coli Selection:        | Ampicillin (100 ug/mL)                       |



[View online »](#)

**ORF Nucleotide Sequence:**

>RG224469 representing NM\_001005158  
 Red=Cloning site Blue=ORF Green=Tags(s)

TTTTGTAATACGACTCACTATAGGGCGGCCGGAATTCGTCGACTGGATCCGGTACCGAGGAGATCTGCC  
 GCC**CGCATCGCC**

ATGAACGGGGAGCAGCAGCTTGATGCAGATGCCGGCTCTGGTATGGAAGAGGTAGAATTAAGCTGGGAAG  
 ATTATCTAGAAGAAACAGGGTCCACAGCAGTTCCTATGGGTCTTTAAACATGTGGACACACGTCTGCA  
 AAATGGATTTGCTCCTGGGATGAAGCTGGAGGTGGCTGTGAGAACAGATCCTGAGACCTACTGGGTTGCC  
 ACCGTTATCACTACCTGTGAGCAGTTGCTCCTTCTCCGCTATGATGGCTATGGGAGGATCGGAGAGCAG  
 ATTTCTGGTGTGACATCAGGAAGGCTGATCTACCCATTGGGTGGTGTGAGCAGAATAAGAAGACCTT  
 TGAAGCCCCAGAAGGCATCAGAGATAAAGTATCTGACTGGGATGAGTTTCTGCGGCAGACCTGATAGGA  
 GCATGTAGTCTCCTGTTCCGCTGCTAGAGGGCCTCCGTAATGGGAGGAATCCTTTAGATCTCATTGCTC  
 CAGGATCCAGACTAGAATGTCAAGCTTCCAGGACTCTTAAAGCACTGGATTGTTACTGTAGTAGAAAA  
 CATTGGAGGAAGGCTGAAGCTACGTTATGAAGGACTTGAAGTTCTGACAATTATGAACATTGGTTGTAT  
 TACTTGGATCCATTTCTCATCACGTTGGTTGGGCTGCTCAACAGGGATATGAGCTTCAGCCCCCTTCAG  
 CCATTAGACATCTAAAAATGAAGCTGAGTGGCAAGAGATTTGGCCAAAGTGAAGAGGAAGAGGAAGA  
 GCCATTACCATCTTACTTATTTAAGGACAAACAAGTTATTGGCATTACATACATTCTCTGTAACATGAAA  
 TTGGAAGCTGTAGACCCCTGGTCTCCTTTTGGGATCTCTCCTGCTACAGTTGTTAAGGTTTTTGTGAGA  
 AGTACTTTCTGGTGGAAATGGATGACTTGCCTCCTGAGAACACGCACGGCGATCCTTTGTGTGCCACGC  
 CGACAGTCTGGCATCTCCCTGTGCAGTGGAGTCTGAAGAATGGCCTACACATCAGCCCCCTCCAGGC  
 TACCCAGCCAGGACTTGTACTGGGCTGACTACCTCAAACAGTGTGGTGTGAGCTGCTCCCAAGAGGT  
 GCTTCCCTCCGTTAATTTCTGAACATGAATTTAAGGAGAACATGAAGCTCGAGGCGGTGAACCCATTCT  
 CCTGAAGAAGTGTGTGTTGCTACCATCAGTGCAGTGCAGGCTCCTACCTGTGGCTCCAGCTGGAGGGT  
 TCTAAGAAGCCTATACCTGAATGTATTGTGAGTGTGGAATCCATGGATATATTTCTTTGGGCTGGTGTG  
 AAACCAACGGCCACCCCTCAGCACTCCTCGCGAGCACGAGTATATAAACAGAGGAAAATTGCAGTGGT  
 TCAGCCAGAAAAACAAGTACCATCCTCGAGGACTGTCCACGAGGGCCTGAGGAATCAGGAGCTGAATCC  
 ACAGAGTCAGTTATGATTAATGGAAAATATTGCTGTCCAAAGATATACTTCAACCACCGTTGCTTCTCAG  
 GGCCATATCTTAACAAAGGAAGAATTGCTGAGCTGCCTCAATGTGTAGGACCTGGAACTGTGTTCTGGT  
 CCTTAGAGAGTCTCACTTTACTTATCAATGCAGCCTACAAACCCAGCCGTGTCCTTCGGGAGCTCCAG  
 CTGGACAAAGACTCTGTGTGGCAGGATGTGGGAAGTCTAAAAGCCAAATATAAAGGAAAGAGTTATC  
 GGGCTACTGTTGAGATAGTGAACACAGCAGATCGGGTACTGAATTCGCGGCAACCTGTATCAAAC  
 GGAATGCTGTCCCTAACCTCTCGGTCCACGGATGGTTCTGGATAAGTGTCTGAGAACTGTTCTGTACTT  
 ACAAGACCAAATACACACACTATTACGGAAAAGAAAATAAAAAGAAATGGGAGGCCACCTGGTGGGC  
 ATAGTAACTTAGCTTGTGCCCTGAAAAAGCCAGTAAAGAGGAGAAAGAGGCGGAAAAATGTTTTTGTTC  
 TAAGAAGAAACGCTCCTCTGCATCTGTTGATAATACCCAGCGGGCTCTCCCAAGGAAGTGGGGGTGAA  
 GATGAGGATGACCCAGATGAAGGGGATGATGATCCCTAAGTGAAGGCAGTACATCCGAGCAGCAGGATG  
 AGCTACAGGAAGAATCAGAAATGTCAGAAAAAAGTCAATGCTCCTTCTCCCAACCAAGTGAATATC  
 CACATCGCTGCCTCCAGATAGACAAAGGAGAAAAAGGGAGCTTCGCACCTTTTCATTTTCTGACGATGAA  
 AATAAACCTCCTTACCAAAGGAAATAAGGATCGAAGTTGCTGAAAGGCTTACCTGGACAGTAACCCCT  
 TGAAGTGGAGTGTGCGAGACGTTGTGCGGTTTCATCAGATCCACTGACTGTGCTCCATTAGCAAGAATATT  
 CCTAGACCAGGAAATGATGGGCAGGCCCTGTTGCTCCTTACCCTTCCACTGTTCAAGAATGCATGGAC  
 TAAAAATTGGCCCTGCCATCAAACCTTGGCCATCACATAGAGAGGATCAAGTTTGTCTTTTATGAGCAGT  
 TTGCCAAC

**ACGCGT**ACGCGGCCGCTCGAG - GFP Tag - GTTTAA

**Protein Sequence:** >RG224469 representing NM\_001005158  
 Red=Cloning site Green=Tags(s)

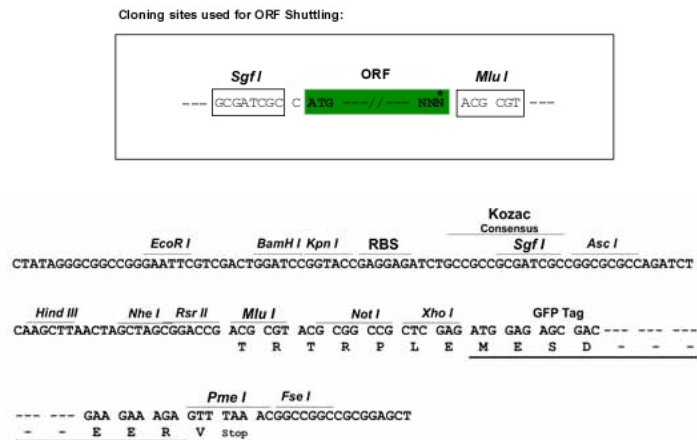
MNGEQQLDADAGSGMEEVELSWEDYLEETGSTAVPYGSKFHKVDTRLQNGFAPGMKLEAVRTDPETYWVA  
 TVITTCEQLLLLRDGYGEDRRADFWCDIRKADLYPIGWCEQNKKTLEAPEGIRDKVSVDWDFLRQTLIG  
 ACSPPVPLLEGLRNGRNPLDLIAPGSRLECAQFQDSLSTWIVTVVENIGGRLKLRVEGLESSDNYEHWLY  
 YLDPFLHHVGVAAQQGYELQPPSAIRHLKNEAEWQEILAKVKEEEEEPLPSYLFKDKQVIGIHTFSVNMK  
 LEAVDPWSPFGISPATVVKVFDEKYFLVEMDDLRPENHARRSFVCHADSPGIFPVQWSLKNGLHISPPPG  
 YPSQDFDWADYLKQCGAEAAPQRCFPPLISEHEFKENMKLEAVNPILPEEVCVATITAVRGSYLWLQLEG  
 SKKPIPECIVSVESMDIFPLGWCETNGHPLSTPRRARVYKQRKIAVVQPEKQVPSRTVHEGLRNQELNS  
 TESVMINGKYCCPKIYFNHRCFSGPYLNKGRIAEQPQCVGPGNCVLLVREVLTLINAAYKPSRVLRELQ  
 LDKDSVWHGCGEVLKAKYKGSYRATVEIVKTADRVTEFCRQTCIKLECCPNLFGPRMVLDKCSENCVSL  
 TKTYTHYYGKKKNKRIGRPPGGHNLACALKKASKRRRKRKNVVFHKKRSSASVDNTPAGSPQSGGGE  
 DEDDPDEGDDSLSEGSTSEQQDELQEESEMSEKKSCSSSPTQSEISTSLPPDRQRKRELRTFSFSDDE  
 NKPPSPKEIRIEVAERLHLDNPLKWSVADVVRFIRSTDCAPLARIFLDQEIDGQALLLTLPTVQECMD  
 LKLGPAIKLCHHIERIKFAFYEQFAN

TRTRPLE - GFP Tag - V

**Restriction Sites:**

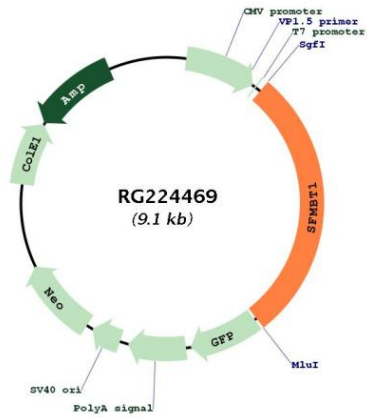
SgfI-MluI

**Cloning Scheme:**



|                               |   |
|-------------------------------|---|
| <b>ACCN:</b>                  | NM_001005158  |
| <b>ORF Size:</b>              | 2598 bp   |
| <b>OTI Disclaimer:</b>        | The molecular sequence of this clone aligns with the gene accession number as a point of reference only. However, individual transcript sequences of the same gene can differ through naturally occurring variations (e.g. polymorphisms), each with its own valid existence. This clone is substantially in agreement with the reference, but a complete review of all prevailing variants is recommended prior to use. <a href="#">More info</a>  |
| <b>OTI Annotation:</b>        | This clone was engineered to express the complete ORF with an expression tag. Expression varies depending on the nature of the gene.  |
| <b>Components:</b>            | The ORF clone is ion-exchange column purified and shipped in a 2D barcoded Matrix tube containing 10ug of transfection-ready, dried plasmid DNA (reconstitute with 100 ul of water).  |
| <b>Reconstitution Method:</b> | <ol style="list-style-type: none"><li>1. Centrifuge at 5,000xg for 5min.</li><li>2. Carefully open the tube and add 100ul of sterile water to dissolve the DNA.</li><li>3. Close the tube and incubate for 10 minutes at room temperature.</li><li>4. Briefly vortex the tube and then do a quick spin (less than 5000xg) to concentrate the liquid at the bottom.</li><li>5. Store the suspended plasmid at -20°C. The DNA is stable for at least one year from date of shipping when stored at -20°C.</li></ol> |
| <b>RefSeq:</b>                | <a href="#">NM_001005158.1</a> , <a href="#">NP_001005158.1</a>   |
| <b>RefSeq Size:</b>           | 3631 bp   |
| <b>RefSeq ORF:</b>            | 2600 bp   |
| <b>Locus ID:</b>              | 51460   |
| <b>Cytogenetics:</b>          | 3p21.1  |
| <b>Protein Families:</b>      | Transcription Factors   |
| <b>Gene Summary:</b>          | This gene shares high similarity with the Drosophila Scm (sex comb on midleg) gene. It encodes a protein which contains four malignant brain tumor repeat (mbt) domains and may be involved in antigen recognition. [provided by RefSeq, Jun 2012]  |

Product images:



Circular map for RG224469