

## Product datasheet for **RG224464**

### delta 2 Catenin (CTNND2) (NM\_001332) Human Tagged ORF Clone

#### Product data:

Product Type:	Expression Plasmids
Product Name:	delta 2 Catenin (CTNND2) (NM_001332) Human Tagged ORF Clone
Tag:	TurboGFP
Symbol:	CTNND2
Synonyms:	GT24; NPRAP
Mammalian Cell Selection:	Neomycin
Vector:	pCMV6-AC-GFP (PS100010)
E. coli Selection:	Ampicillin (100 ug/mL)
ORF Nucleotide Sequence:	>RG224464 representing NM_001332 Red=Cloning site Blue=ORF Green=Tags(s)

TTTTGTAATACGACTCACTATAGGGCGGCCGGGAATTCGTCGACTGGATCCGGTACCGAGGAGATCTGCC  
GCC**CGATCGCC**

ATGTTTGCAGGAAGCCGCCGGGCGCCGCCTTTGGGAGCTATGCCTGTTCCAGACCAGCCTTCATCAG  
CCTCAGAGAAGACGAGTTCCTGAGCCCCGGCTTAAACACCTCCAACGGGGATGGCTCTGAAACAGAAAC  
CACCTCTGCCATCTCGCCTCAGTCAAAGAACAGGAATTACAGTTTAAAGGCTGACCCGAGAGCTGGAG  
GCTGAACGGCAGATCGTAGCCAGCCAGCTGGAGCGATGCAAGCTCGGATCCGAGACTGCCAGCATGAGCA  
GCATGAGTTCAGCAGAAGAGCAGTTTCAGTGCCAGTCAACAAGATGGTCAAAAAGATATCGAAGATGAGCT  
TACAACAGGTCTCGAGCTGGTGGACTCCTGTATTAGGTCACTACAGGAATCAGGAATACTTGACCCACAG  
GATTATTCTACAGGTGAAAGGCCAGCCTGCTCTCCAGAGTGCCTTCAGCTCAATCCAAACCTGAAG  
GGTCTTTCCAGTATCCGGCCAGCTACCATAGCAACCAGACCCTGGCCCTGGGGGAAACCACCCCTCACA  
GCTCCCGGCCCGAGGCACACAAGCCGAGCTACGGGCCAGAGCTTCAGCCAGGGCACGACCAGCCGCGCC  
GGCCACCTGGCGGGGCCGAGCCCGCGCCGCGCCGCGCCGCGCCGCGGGAGCCGTTCCGCGCCAGCC  
TGGGCAGCGCTTCCACCTGCCGACGCGCCGCGCCGCGCCGCGCCGCGCCGCGCTCTACTACTCCAGCTC  
CAGCGTGGCCGCGCCGCGCGGGGGCTCCCCGCTGGCCGCGCCAGGGCGGCTCTCGCCCAAGAGCTCG  
CAGCGCGGGCTCGGCCCGGAGGGCGCCACCTACGCCGCGCCGCGCCGCGCCGCGCCGCGCCGCGCTGTC  
CCAGCCGCTGGCCAAGTCTACAGCACCAGCTCGCCCATCAACATCGTGTGTCCTCGGCCGCGCTGTC  
CCCGATCCGCGTGACCTCGCCCCCACCCTGACAGTCCACCATCTCCTCCTCGCCATCCACCAGCTGAGC  
TCCACCATCGGCAGTACGCCACCCTGTGCCCCACCAAGCGCCTGGTCCACGCGTCCGAGCAGTACAGCA  
AGCACTCGCAGGAGCTGTATGCCACGGCCACCCTCCAGAGCCGGGCAGCCTGGCAGCTGGTTCCCGAGC  
CTCATAACAGCAGCAGCATGGGCACCTGGGCCAGAGTTGCGGGCCCTGCAGTCCCAGAACACCACATA  
GATCCCATCTATGAAGACCGCTCTATCAGAAGCCCCCTATGAGGAGTCTCAGCCAGAGCCAGGGGGACC  
CTCTGCCGCCAGCACACCCGGCACCTACCGCACGAGCACAGCCCATCTTCCCCTGGTGTGACTCCGT  
CCCCTTGACGCGCACAGGCAGCCAGCACGGCCACAGAATGCCCGCGGGCCACCTTCAGAGGGCCAGC



[View online »](#)

TATGCCGCCGGCCAGCCTCCAATTACGCGGACCCCTACCGACAGCTGCAGTATTGTCCTCTGTTGAGT  
CTCCATACAGCAAATCCGGCCCTGCTCTCCCGCCTGAAGGCACCTTGGCCAGGTCCCCGTCCATTGATAG  
CATTCAGAAAGATCCCAGAGAATTTGGATGGAGAGACCCGGAAGTCCCGGAAGTATTGAGATGTTGCAG  
CACCAGTTTCCCTCGGTCCAGTCTAACGCGGCAGCCTACTTGAACACCTCTGTTTTGGAGACAACAAAA  
TTAAAGCCGAGATAAGGAGACAAGGAGGCATCCAGCTCCTGGTGGACCTGTTGGATCATCGGATGACCGA  
AGTCCACCGTAGTGCCTGTGGAGCTCTGAGAACTGGTGTATGGGAAGGCCAACGATGATAACAAAATT  
GCCCTGAAAAACTGTGGTGGCATCCCAGCACTGGTGGAGTTACTCCGCAAGACGACTGACCTGGAGATCC  
GGGAGCTGGTACAGGAGTCTTTGGAACCTCTCCTCATGCGATGCACTAAAATGCCAATCATCCAGGA  
TGCCCTAGCAGTACTGACCAACGCGGTGATTATCCCCCACTCAGGCTGGGAAAAATTCGCCTCTTCAGGAT  
GATCGGAAAAATACAGCTGCATTCATCACAGGTGCTGCGTAACGCCACCGGTGCCTAAGGAATGTTAGTT  
CGGCCGGAGAGGAGGCCCGCAGAAGGATGAGAGAGTGTGATGGGCTTACGGATGCCTTGCTGTACGTGAT  
CCAGTCTGCGCTGGGAGCAGTGAATCGATAGCAAGACCGTTGAAAATGTGTGTGCATTTTAAGGAAC  
CTCTCGTACCGGCTGGCGGCAGAACTCTCAGGGACAGCACATGGGCACGGACGAGCTGGACGGGCTAC  
TCTGTGGCGAGGCCAATGGCAAGGATGCTGAGAGCTCTGGGTGCTGGGGCAAGAAGAAGAAAAAGAA  
ATCCCAAGATCAGTGGGATGGAGTAGGACCTCTCCAGACTGTGCTGAACCACAAAAGGGATCCAGATG  
CTGTGGCACCCATCAATAGTCAAACCTACCTCACACTGCTCTCTGAGTGCCTCAAATCCAGACACGCTGG  
AAGGGGCGGCAGGCGCCCTGCAGAACTTGCTGCAGGGAGCTGGAAGTGGTCAAGTATATATCCGAGCCGC  
TGTCCGAAAAGAGAAAGGCCCTGCCATCCTCGTGGAGCTGCTCCGAATAGACAATGACCGTGTGGTGTGC  
GCGGTGGCCACTGCGCTGCGGAACATGGCCTTGGACGTCAGAAAATAAGGAGCTCATCGGCAAAATACGCCA  
TGCGAGACCTAGTCCACAGGCTTCCAGGAGGGAACAACAGCAACAACACTGCAAGCAAGGCCATGTCGGA  
TGACACAGTGACAGCTGTCTGCTGCACACTGCACGAAGTATTACCAAGAACATGGAGAACGCCAAGGCC  
TTACGGGATGCCGTGGCATCGAGAAGTTGGTCCGCATCTCCAAAAGCAAAGGAGATAAACACTCTCCAA  
AAGTGGTCAAGGCTGCATCTCAGGTCTCAACAGCATGTGGCAGTACCGAGATCTGAGGAGTCTCTACAA  
AAAGGATGGATGGTCAACAATACCACTTTGTAGCCTCGTCTTCAACCATCGAGAGGGACCGCAAAGGCC  
TACTCCTCCTCCCGCACGCCCTCCATCTCCCCTGTGCGCGTGTCTCCCAACAACCCTCAGCAAGTGCCC  
CAGCTTACCTCGGAAAATGATCAGCCTCAAAGAAAGGAAAACAGACTACGAGTGCACCGGCAGCAACGC  
CACCTACCACGGAGCTAAAGGCGAACACACTTCCAGGAAAGATGCCATGACAGCTCAAAACACTGGAATT  
TCAACTTTGTATAGGAATTTTATGGTGCGCCGCTGAAGACATCAAACACAACCAGTTTCAGCACAGC  
CAGTCCCACAGGAGCCCAGCAGAAAAGATTACGAGACCTACCAGCCATTTCAGAATTCACAAGAAATTA  
CGATGAGTCTTCTTCGAGGACCAGGTCCACCATCGCCCTCCCGCCAGCGAGTACACCATGCACCTGGGT  
CTCAAGTCCACCGCAACTACGTTGACTTCTACTCAGCTGCCCGTCCCTACAGTGAAGTGAAGTATGAAA  
CGAGCCACTACCGGCCCTCCCCGACTCCTGGGTG

AGCGGACCGACGCGTACGCGGCCGCTCGAG - GFP Tag - GTTTAA

Protein Sequence: >RG224464 representing NM\_001332  
 Red=Cloning site Green=Tags(s)

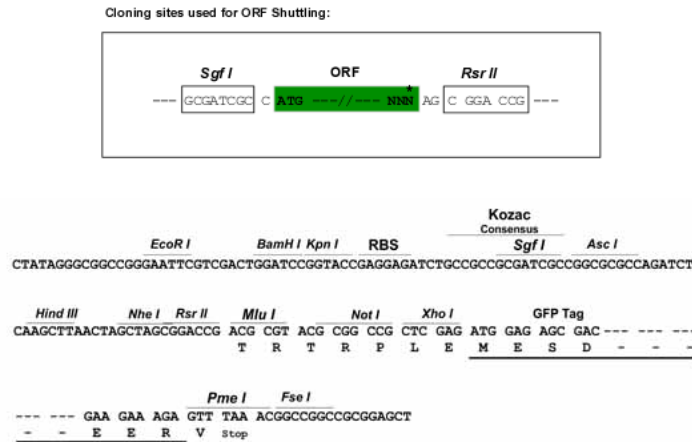
MFARKPPGAAPLGAMPVDPQPSSASEKTSSLSPGLNLSNGDGETTETSAILASVKEQELQFERLTRELE  
 AERQIVASQLERCKLGSETGSMSSMSAAEQFQWQSQDQKDIIEDELTTGLELVDSCIRSLQESGILDPO  
 DYSTGERPSLLSQSALQLNSKPEGSFQYPASYHSNQTALGETTPSQLPARGTQARATGQSFQGTTSRA  
 GHLAGPEPAPPPPPPPREPFAPSLGSAFHLPDAPPAAAAAALYSSSTLPAPPRGGSPLAAPQGGSPTKL  
 QRGGSAPGATYAAPRGSSPKQSPSRLAKSYSTSSPINIVVSSAGLSPIRVTSPTVQSTISSSPIHQLS  
 STIGTYATLSPTKRLVHASEQYSKHSQELYATATLQRPGLAAGSRASYSSQHGHLGPELRALQSPHHI  
 DPIYEDRVYQKPPMRSLSQSQGDPLPPAHTGTYRTSTAPSSPGVDSVPLQRTGSQHGPQNAAAATFORAS  
 YAAGPASNYADPYRQLQYCPVSPYSKSGPALPPEGTLARSPSIDSIQKDPREFGWRDPPELPEVIQMLQ  
 HQFPSVQSNAAAYLQHLCFGDNKIKAEIRRQGGIQLLDLLDHRMTEVHRSACGALRNLVYGKANDDNKI  
 ALKNCGGIPALVRLLRKTTDLIRELVTGVLWNLSSCDALKMPIIQDALAVLTNAVIIIPHSWENSPLQD  
 DRKIQLHSSQVLRNATGCLRNVSSAGEEARRRMRECDGLTDALLVYIQSALGSSEIDSKTVENVCILRN  
 LSYRLAAETSQGHMGTDDEL DGLLCGEANGKDAESSGCWGKKKKKKKSSQDQWDGVLDPDCAEPPKGIQM  
 LWHP SIVKPYLTLLSECSNPDTLEGAAGALQNL AAGSWKWSVYIRAAVRKEKGLPILVELLRIDNDRVVC  
 AVATALRNMALDVRNKEIIGKYAMRDLVHRLPGGNNNSNTASKMSDDTAVTAVCTLHEVITKNMENAKA  
 LRDAGGIEKLVGISKSGDKHSPKVKAASQVLSNMWQYRDLRSLYKKGWSQYHFVASSSTIERDRQRP  
 YSSRTPSISPVRVSPNRSASAPSPREMI SLKERKTDYECTGSNATYHGAKGEHTSRKDAMTAQNTGI  
 STL YRNSYGAPAE DIKHNQVSAQPVPQEPSRKDYETYQPFQNSTRYDESF FEDQVHRRPPASEYTMHLG  
 LKSTGNYVDFYSAARPYSELNYETSHYPASPD SW

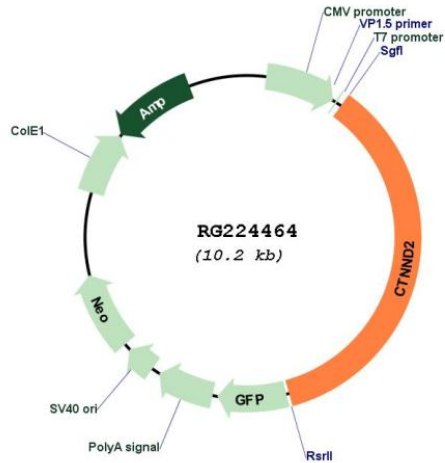
SGPTRRRLE - GFP Tag - V

Restriction Sites:

SgfI-RsrII

Cloning Scheme:



**Plasmid Map:**


**ACCN:** NM\_001332

**ORF Size:** 3675 bp

**OTI Disclaimer:** The molecular sequence of this clone aligns with the gene accession number as a point of reference only. However, individual transcript sequences of the same gene can differ through naturally occurring variations (e.g. polymorphisms), each with its own valid existence. This clone is substantially in agreement with the reference, but a complete review of all prevailing variants is recommended prior to use. [More info](#)

**OTI Annotation:** This clone was engineered to express the complete ORF with an expression tag. Expression varies depending on the nature of the gene.

**Components:** The ORF clone is ion-exchange column purified and shipped in a 2D barcoded Matrix tube containing 10ug of transfection-ready, dried plasmid DNA (reconstitute with 100 ul of water).

**Reconstitution Method:**

1. Centrifuge at 5,000xg for 5min.
2. Carefully open the tube and add 100ul of sterile water to dissolve the DNA.
3. Close the tube and incubate for 10 minutes at room temperature.
4. Briefly vortex the tube and then do a quick spin (less than 5000xg) to concentrate the liquid at the bottom.
5. Store the suspended plasmid at -20°C. The DNA is stable for at least one year from date of shipping when stored at -20°C.

**RefSeq:** [NM\\_001332.4](#)

**RefSeq Size:** 5440 bp

**RefSeq ORF:** 3678 bp

**Locus ID:** 1501

**UniProt ID:** [Q9UQB3](#)

**Cytogenetics:** 5p15.2

**Domains:** Armadillo\_seg

**Protein Families:** Druggable Genome

**Gene Summary:** This gene encodes an adhesive junction associated protein of the armadillo/beta-catenin superfamily and is implicated in brain and eye development and cancer formation. The protein encoded by this gene promotes the disruption of E-cadherin based adherens junction to favor cell spreading upon stimulation by hepatocyte growth factor. This gene is overexpressed in prostate adenocarcinomas and is associated with decreased expression of tumor suppressor E-cadherin in this tissue. This gene resides in a region of the short arm of chromosome 5 that is deleted in Cri du Chat syndrome. Alternative splicing results in multiple transcript variants encoding different isoforms. [provided by RefSeq, Dec 2013]