

## Product datasheet for **RG224461**

### DERA (NM\_015954) Human Tagged ORF Clone

#### Product data:

**Product Type:** Expression Plasmids  
**Product Name:** DERA (NM\_015954) Human Tagged ORF Clone  
**Tag:** TurboGFP  
**Symbol:** DERA  
**Synonyms:** CGI-26; DEOC  
**Mammalian Cell Selection:** Neomycin  
**Vector:** pCMV6-AC-GFP (PS100010)  
**E. coli Selection:** Ampicillin (100 ug/mL)  
**ORF Nucleotide Sequence:** >RG224461 representing NM\_015954  
**Red=Cloning site Blue=ORF Green=Tags(s)**

TTTTGTAATACGACTCACTATAGGGCGGCCGGAATTCGTCGACTGGATCCGGTACCGAGGAGATCTGCC  
GCC**CGATCGCC**

ATGGTAACAGCTTTCAGGAGCCTACCACGCGGCAGCTCCGGAGCTGCCGCTCCATGTCCGCGCACAATC  
GGGGCACCAGCTCGACCTTAGCTGGATCTCCAAAATACAAGTGAATCACCCGGCAGTTCTGAGGCGTGC  
GGAACAAATCCAGGCTCGCAGAACCGTAAAAAGGAGTGGCAGGCTGCTTGGCTCCTGAAAGCTGTTACC  
TTTATAGATCTTACTACACTTTCAGGTGATGATACATCTTCCAACATTCAAAGGCTCTGTTATAAGCCA  
AATACCCAATCCGGGAAGATCTCTTAAAAGCTTTAAATATGCATGATAAAGGCATTACTACAGCCCGCT  
TTGTGTTTATCCCGCCCGGTGTGTGATGCTGTAAAAGCACTCAAGGCTGCAGGCTGTAATATCCCTGTG  
GCATCAGTGGCCGCTGGATTTCCAGCTGGACAGACTCATTGAAGACACGATTAGAAGAGATCAGATTGG  
CTGTGGAAGATGGAGCTACAGAAATCGACGTGGTAATTAACAGAAGCTTGGTGTGACAGGCCAGTGGGA  
AGCCCTGTATGATGAGATTCGTCACTTTCGCAAGGCCTGTGGGGAGGCTCATCTTAAAATATATTAGCG  
ACAGGAGAAGCTTGAAGCTTACTAATGTCTATAAAGCCAGTATGATAGCAATGATGGCAGGATCAGATT  
TTATTAAGACCTTACTGGAAAAGAAACAGTAAATGCCACCTTCCCGGTAGCTATAGTAAATGCTGCGGGC  
CATTAGAGATTTCTTCTGAAAAGCTGAAAACAAGATAGGGTTTAAACCAGCAGGAGGCATCCGCAGTGCA  
AAGGATTCCTTGGCTCTCTTTGTAAGGAGGAGCTTGGAGATGAGTGGCTGAAGCCAGAAGCTCT  
TTCGAATAGGTGCCAGTACTCTGCTCTCGGACATTGAGAGGCAGATTTACCATCATGTGACTGGAAGATA  
TGCAGCTTATCATGATCTTCCAATGTCT

**ACGCGTACGCGGCCGCTCGAG** - GFP Tag - GTTTAA



[View online »](#)

**Protein Sequence:** >RG224461 representing NM\_015954  
Red=Cloning site Green=Tags(s)

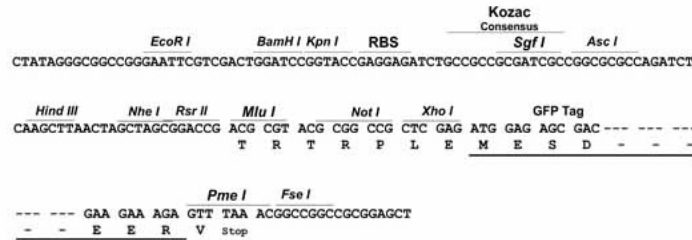
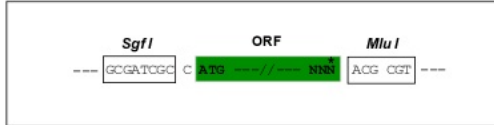
MVTAFRSLPRGSSGAAASMSAHNRGTELDLSWISKIQVNHPAVLRRAEQIQARRTVKKEWQAALLKAVT  
 FIDLTTLSGDDTSSNIQRLCYKAKYPIREDLLKALNMHDKGITTAAVCVYPARVCDVAVKALKAAGCNIPV  
 ASVAAGFPAGQTHLKRLEEIRLAVEDGATEIDVVINRSLVLTGQWEALYDEIRQFRKACGEAHLKTLA  
 TGELGTLTNVYKASMIAMMAGSDFIKTSTGKETVNATFPVAIVMLRAIRDFFWKTGNKIGFKPAGGIRSA  
 KDSLAWLSLVKEELGDEWLKPELFRIGASTLLSDIERQIYHHVTGRYAAYHDLPM

TRTRPLE - GFP Tag - V

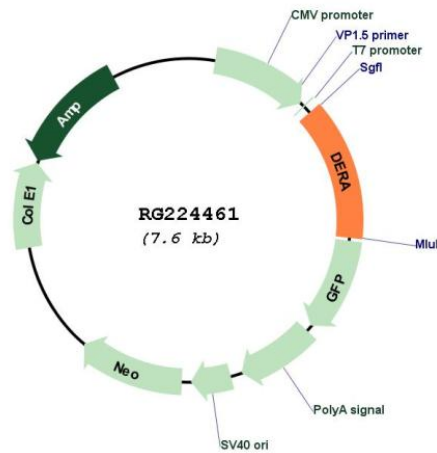
**Restriction Sites:** SgfI-MluI

**Cloning Scheme:**

Cloning sites used for ORF Shuttling:



**Plasmid Map:**



**ACCN:** NM\_015954

**ORF Size:** 1008 bp

<b>OTI Disclaimer:</b>	The molecular sequence of this clone aligns with the gene accession number as a point of reference only. However, individual transcript sequences of the same gene can differ through naturally occurring variations (e.g. polymorphisms), each with its own valid existence. This clone is substantially in agreement with the reference, but a complete review of all prevailing variants is recommended prior to use. <a href="#">More info</a>
<b>OTI Annotation:</b>	This clone was engineered to express the complete ORF with an expression tag. Expression varies depending on the nature of the gene.
<b>Components:</b>	The ORF clone is ion-exchange column purified and shipped in a 2D barcoded Matrix tube containing 10ug of transfection-ready, dried plasmid DNA (reconstitute with 100 ul of water).
<b>Reconstitution Method:</b>	<ol style="list-style-type: none"><li>1. Centrifuge at 5,000xg for 5min.</li><li>2. Carefully open the tube and add 100ul of sterile water to dissolve the DNA.</li><li>3. Close the tube and incubate for 10 minutes at room temperature.</li><li>4. Briefly vortex the tube and then do a quick spin (less than 5000xg) to concentrate the liquid at the bottom.</li><li>5. Store the suspended plasmid at -20°C. The DNA is stable for at least one year from date of shipping when stored at -20°C.</li></ol>
<b>RefSeq:</b>	<a href="#">NM_015954.1</a> , <a href="#">NP_057038.1</a>
<b>RefSeq Size:</b>	1561 bp
<b>RefSeq ORF:</b>	957 bp
<b>Locus ID:</b>	51071
<b>UniProt ID:</b>	<a href="#">Q9Y315</a>
<b>Cytogenetics:</b>	12p12.3
<b>Protein Families:</b>	Druggable Genome
<b>Protein Pathways:</b>	Pentose phosphate pathway
<b>Gene Summary:</b>	Catalyzes a reversible aldol reaction between acetaldehyde and D-glyceraldehyde 3-phosphate to generate 2-deoxy-D-ribose 5-phosphate. Participates in stress granule (SG) assembly. May allow ATP production from extracellular deoxyinosine in conditions of energy deprivation.[UniProtKB/Swiss-Prot Function]