

Product datasheet for **RG224453**

POTEA (NM_001005365) Human Tagged ORF Clone

Product data:

Product Type:	Expression Plasmids
Product Name:	POTEA (NM_001005365) Human Tagged ORF Clone
Tag:	TurboGFP
Symbol:	POTEA
Synonyms:	A26A1; CT104.3; POTE-8; POTE8
Mammalian Cell Selection:	Neomycin
Vector:	pCMV6-AC-GFP (PS100010)
E. coli Selection:	Ampicillin (100 ug/mL)



[View online »](#)

ORF Nucleotide Sequence:

>RG224453 representing NM_001005365
 Red=Cloning site Blue=ORF Green=Tags(s)

TTTTGTAATACGACTCACTATAGGGCGGCCGGAATTCGTCGACTGGATCCGGTACCGAGGAGATCTGCC
 GCC**GCGATCGCC**

ATGGTGGCTGAGTTTCTCCAAAGCTGGCTGCCTCCCCTATGAAGAAGCCCTTTGGCTTCAGGGCAAGA
 TGGGCAAGTGGTCTGCTGCTGCTTCCCCTGCTGCAGGGGAAGCGCAAGAACAACATGGGTGCTTGGAG
 AGACCACGACGACAGCGCCTTACCGGAGCCAAGGTATCACGTCCGTCGAGAAGATCTGGGCAAGCTCCAC
 AGAGCTGCCTGGTGGGTGAAGTCCCAGAGCGGATCTCATCGTCATGCTCAGGGGCCCTGGCATTAAACA
 AAAGGGACAAGAAGAAGAGGACTGCTCTACACTTGGCCTGTGCCAATGGCAATTCAGAAGTAGTAAGTCT
 TCTGCTGGACAGACAATGTCAACTTCATGTCTTTGACAGCAAAAAGAGGACAGCTCTGATAAAGGCCGTA
 CAATGCCAGGAGGATGAATGTGCGTTAATGTTGCTACAACATGGCACTGATCCAAATCTCCAGATATGT
 ATGGGAATACTGCTCTACACTATGCAGTCTACAATGAAGATAAATTAATGGCCAAAACACTGCTTTTATA
 CGGTGCTGACATTGAATCAAAAACAAGGGTGGCCTCACACCACCTTTGCTTGTGTACATGGACAAAA
 CAGCGAATGGTGAAATTTTAAATCAAGAAAAAGCTAATTTAAATGCACTTGATAGGTTTGAAGAAGCTG
 CCCTCATACTTGCTGTACGTTGTGGATCAGCAAGTATAGTTAGTCTTCTACTTCAGCAAAAATATTGATGT
 ATTTTCTCAAGATGTATTTGGACAAAAGTCTGAAGATTATGCAGTTTCTAGTCATCATAGTATAATTTGC
 CAATTACTTTCTGACTACAAAGAAAACCAGATGCCAAAACAACCTTCTGGAAATAGCAATCCAGAACAAG
 ACTTAAAGCTGACATCAGAGGAAGGCCACAAAGGCTTAAAGGAAGTGAAGTGAAGTGAAGTGAAGTGAAGT
 GACTCAAGAACCAGACATAAATAAGGATTGCGATAGAGAGGTTGAAGAAGAAATGCAGAAGCATGGAAGT
 AATAATGTGGGATTATCAGAAAACCTGACTGATGGTGTGCTGCTGGCAATGGTGTGGTGGATTAGTTC
 CACAAAGAAAGAGCAGAAAGCATGAAAATCAGCAATTTCCATAACACAGAGATTGAAGAGTACACAGGCC
 TGAAGAAGAAATCTAATGAAAAGAACAAGGTCAAAAAGCCAAATACATTTCAGTGGATAACCTTGATGACATA
 ACATGGCCATCAGAAATAGCGTCAAGGATTATGATTTGCTTTTCTAATTATGAGACTTTTACATTGC
 TCATTGAACAACCTCAAAAATGGATTTTAAACGATTCTGCTAGCCTATCAAAAATCCAGGATGCAGTTATTTT
 AGAAGAACACTTACTAGAACTCAAAAATAGCCACTATGAGCAACTTACAGTAGAAGTTGAACAAATGGAA
 AATATGGTTCATGTACTACAAAA

ACGCGTACGCGGCCGCTCGAG - GFP Tag - GTTTAA

Protein Sequence:

>RG224453 representing NM_001005365
 Red=Cloning site Green=Tags(s)

MVAEVSPKLAASPMKKPFGRGKMGKWCCEFPCCRGSGKNMGAWRDHDDSAFTEPRYHVRREDLGLH
 RAAWWEVPRADLIVMLRGPINRDKKRTALHLACANGNSEVVSLLLDRCQLHVFDSKKRTALIKAV
 QCQEDECALMLLQHGTDPNLPDYGNTALHYAVYNEDKLMKTLTLLYGDIESKNKGGLTPLLLAVHGQK
 QRMVKFLIKKANLNALDRFGRTALILAVRCGSASIVSLLLQONIDVFSQDVFQTAEDYAVSSHHSIIC
 QLLSDYKENQMPNNSGNSNPEQDLKLTSEEEQRLKGSSENSQHEKVTQEPDINKDCDREVEEEMQKHGS
 NNVGLSENLDGAAAGNGDGLVPQRKSRKHENQQFPNTEIEEYHRPEKKSNEKNKVKSQIHSVDNLDDI
 TWPSEIASDYDLLFSNYETFTLLIEQLKMFNDSASLSKIQDAVISEEHLLELKNSHYEQLTVEVEQME
 NMVHVLQK

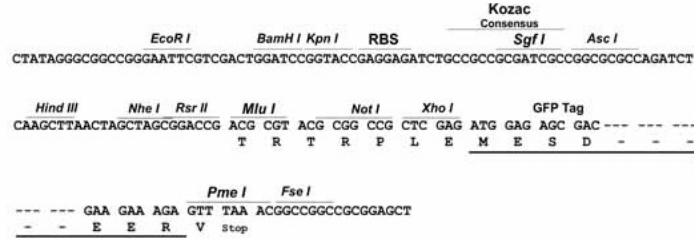
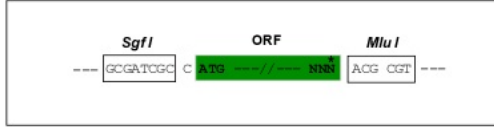
TRTRPLE - GFP Tag - V

Restriction Sites:

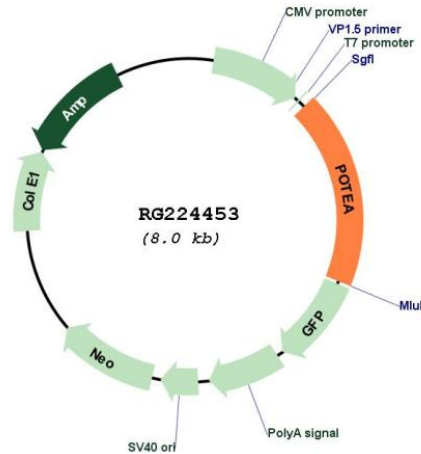
Sgfl-MluI

Cloning Scheme:

Cloning sites used for ORF Shutting:



Plasmid Map:



ACCN: NM_001005365

ORF Size: 1494 bp

OTI Disclaimer: The molecular sequence of this clone aligns with the gene accession number as a point of reference only. However, individual transcript sequences of the same gene can differ through naturally occurring variations (e.g. polymorphisms), each with its own valid existence. This clone is substantially in agreement with the reference, but a complete review of all prevailing variants is recommended prior to use. [More info](#)

OTI Annotation: This clone was engineered to express the complete ORF with an expression tag. Expression varies depending on the nature of the gene.

Components: The ORF clone is ion-exchange column purified and shipped in a 2D barcoded Matrix tube containing 10ug of transfection-ready, dried plasmid DNA (reconstitute with 100 ul of water).

Reconstitution Method:

1. Centrifuge at 5,000xg for 5min.
2. Carefully open the tube and add 100ul of sterile water to dissolve the DNA.
3. Close the tube and incubate for 10 minutes at room temperature.
4. Briefly vortex the tube and then do a quick spin (less than 5000xg) to concentrate the liquid at the bottom.
5. Store the suspended plasmid at -20°C. The DNA is stable for at least one year from date of shipping when stored at -20°C.

RefSeq: [NM_001005365.2](#), [NP_001005365.2](#)

RefSeq Size: 1976 bp

RefSeq ORF: 1497 bp

Locus ID: 340441

UniProt ID: [Q6S8I7](#)

Cytogenetics: 8p11.1