

Product datasheet for **RG224442**

KCNIP1 (NM_001034837) Human Tagged ORF Clone

Product data:

Product Type: Expression Plasmids
Product Name: KCNIP1 (NM_001034837) Human Tagged ORF Clone
Tag: TurboGFP
Symbol: KCNIP1
Synonyms: KCHIP1; VABP
Mammalian Cell Selection: Neomycin
Vector: pCMV6-AC-GFP (PS100010)
E. coli Selection: Ampicillin (100 ug/mL)
ORF Nucleotide Sequence: >RG224442 representing NM_001034837
Red=Cloning site Blue=ORF Green=Tags(s)

TTTTGTAATACGACTCACTATAGGGCGCCGGGAATTCGTCGACTGGATCCGGTACCGAGGAGATCTGCC
GCC**CGATCGCC**

ATGGGGCCGTCATGGGCACCTTCTCATCTCTGCAAACCAACAAAGGCGACCCTCGAAAGACATCGCCT
GGTGGTATTACCAGTATCAGAGAGATAAGATTGAAGATGAGCTGGAGATGACCATGGTTTGCCATCGGCC
CGAGGGACTGGAGCAGCTCGAGGCCAGACCAACTTCACCAAGAGGGAGCTGCAGGTCCTTTATCGAGGC
TTCAAAAATGAGTGCCCCAGTGGTGTGGTCAACGAAGACACATTCAGCAGATCTATGCTCAGTTTTTCC
CTCATGGAGATGCCAGCACGTATGCCATTACCTCTTCAATGCCTTCGACACCACTCAGACAGGCTCCGT
GAAGTTCGAGGACTTTGTAACCGCTCTGTGATTTTATTGAGAGGAAGTCCACGAGAACTAAGGTGG
ACATTTAATTTGTATGACATCAACAAGGACGGATACATAAACAAGAGGAGATGATGGACATTGTCAAAG
CCATCTATGACATGATGGGGAAATACACATATCCTGTGCTCAAAGAGGACACTCCAAGGCAGCATGTGGA
CGTCTTCTCCAGAAAATGGACAAAAATAAGATGGCATCGTAACTTTAGATGAATTTCTTGAAATCATGT
CAGGAGGACGACAACATCATGAGGTCTCTCCAGCTGTTTCAAATGTCATG

ACGCGTACGCGGCCGCTCGAG - GFP Tag - GTTTAA



[View online »](#)

Protein Sequence: >RG224442 representing NM_001034837
Red=Cloning site Green=Tags(s)

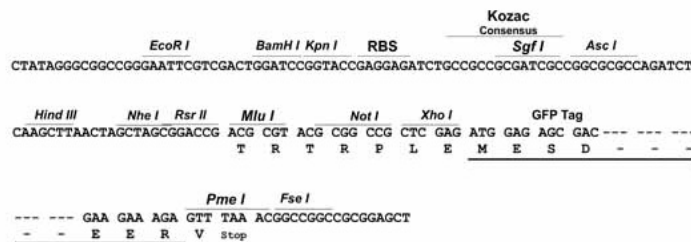
MGAVMGT FSSLQTKQRRPSKDIAWYYQYQRDKIEDELEMTMVCHRPEGLEQLEAQTNFTKRELQVLYRG
 FKNECPGSGVVNEDTFKQIYAQFFPHGDASTYAHYLFNAFDTTQTGSVKFEDFVTALSILLRGTVHEKLRW
 TFNLYDINKDGYINKEEMMDIVKAIYDMMGKYTPVLKEDTPRQHVDFVFQKMDKNKDGIVTLDEFLESC
 QEDDNIMRSLQLFQNVN

TRTRPLE - GFP Tag - V

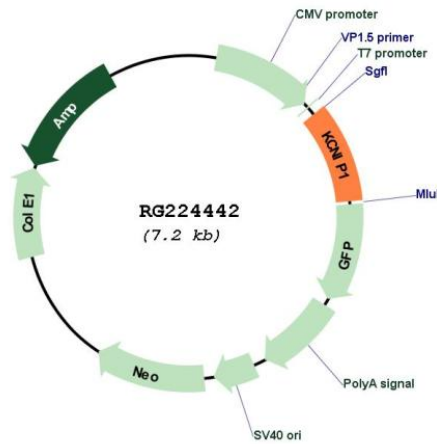
Restriction Sites: SgfI-MluI

Cloning Scheme:

Cloning sites used for ORF Shuttling:



Plasmid Map:



ACCN: NM_001034837

ORF Size: 681 bp

OTI Disclaimer:	The molecular sequence of this clone aligns with the gene accession number as a point of reference only. However, individual transcript sequences of the same gene can differ through naturally occurring variations (e.g. polymorphisms), each with its own valid existence. This clone is substantially in agreement with the reference, but a complete review of all prevailing variants is recommended prior to use. More info
OTI Annotation:	This clone was engineered to express the complete ORF with an expression tag. Expression varies depending on the nature of the gene.
Components:	The ORF clone is ion-exchange column purified and shipped in a 2D barcoded Matrix tube containing 10ug of transfection-ready, dried plasmid DNA (reconstitute with 100 ul of water).
Reconstitution Method:	<ol style="list-style-type: none">1. Centrifuge at 5,000xg for 5min.2. Carefully open the tube and add 100ul of sterile water to dissolve the DNA.3. Close the tube and incubate for 10 minutes at room temperature.4. Briefly vortex the tube and then do a quick spin (less than 5000xg) to concentrate the liquid at the bottom.5. Store the suspended plasmid at -20°C. The DNA is stable for at least one year from date of shipping when stored at -20°C.
RefSeq:	NM_001034837.3
RefSeq Size:	2053 bp
RefSeq ORF:	684 bp
Locus ID:	30820
UniProt ID:	Q9NZI2
Cytogenetics:	5q35.1
Protein Families:	Druggable Genome, Ion Channels: Other
Gene Summary:	This gene encodes a member of the family of cytosolic voltage-gated potassium (Kv) channel-interacting proteins (KCNIPs), which belong to the neuronal calcium sensor (NCS) family of the calcium binding EF-hand proteins. They associate with Kv4 alpha subunits to form native Kv4 channel complexes. The encoded protein may regulate rapidly inactivating (A-type) currents, and hence neuronal membrane excitability, in response to changes in the concentration of intracellular calcium. Alternative splicing results in multiple transcript variants encoding different isoforms. [provided by RefSeq, May 2013]