

Product datasheet for **RG224434**

SR140 (U2SURP) (NM_001080415) Human Tagged ORF Clone

Product data:

Product Type:	Expression Plasmids
Product Name:	SR140 (U2SURP) (NM_001080415) Human Tagged ORF Clone
Tag:	TurboGFP
Symbol:	U2SURP
Synonyms:	fSAPa; SR140
Mammalian Cell Selection:	Neomycin
Vector:	pCMV6-AC-GFP (PS100010)
E. coli Selection:	Ampicillin (100 ug/mL)
ORF Nucleotide Sequence:	>RG224434 representing NM_001080415 Red=Cloning site Blue=ORF Green=Tags(s)

TTTTGTAATACGACTCACTATAGGGCGGCCGGAATTCGTCGACTGGATCCGGTACCGAGGAGATCTGCC
GCC**CGATCGCC**

ATGGCGGACAAAACGCCAGGCGGATCTCAGAAGGCCAGTCAAAGACGAGATCATCAGATGTTTCATTCAT
CTGGATCTTCAGATGCACATATGGATGCATCTGGACCCTCAGATAGTGATATGCCAAGTCGGACACGACC
TAAGAGCCCAAGAAAACATAATTATAGGAATGAAAGTGCCCGTAAAAGCCTTTGTGATTCTCCTCATCAG
AATCTCTCAAGACCTCTTCTGAAAACAACTTAAAGCATTTCAGTATTGAAAAATGAGTACAGCTAAGC
GAACTTTAAGTAAAAGAACAGGAAGAATTAAGAAAAAGGAGGATGAAAAGGCAGCTGCTGAGATTTA
TGAGGAGTTTCTTGCTGCTTTTGAAGGAAGTATGGTAATAAAGTGAAAACATTTGTGCGAGGGGTGTT
GTTAATGCAGCTAAAGAAGAACATGAAACAGATGAAAAAGAGGTAAAATCTATAAGCCATCTTCAAGAT
TTGCAGATCAAAAAATCCTCCAATCAGTCTTCCAATGAAAGACCACCATCTCTTCTTGATAGAAAAC
CAAAAAACCTCCACTTAAAAAGGAGAGAAAAGAAAAAGCAATTTGGAACCTCTTCAAGAAGAA
TTAAAGCAATTCAGAGGAACGTGATGAGAGACATAAAACAAAAGGCAGATTAAGTCGATTTGAACCTC
CTCAGTCAGATTTCTGATGGTCAGCGTCGTTCTATGGACGCGCCTCAAGAAGAAATAGATCATCTGGTGT
TCTTGATGATTACGCACCTGGCTCACATGATGTAGGAGATCCAAGCACTACTAATTTATACCTTGGAAAC
ATTAATCCACAGATGAATGAAGAAATGCTGTGCCAAGAATTTGGAAGATTTGGACCGTTAGCCAGTGTGA
AAATCATGTGGCCTAGAAGTATGGAAGAAAGGCCAGAGAGAGAAATTCGGCTTTGTGGCTTTATGAA
TAGAAGAGATGCTGAAAGAGCTTTAAAAAATTTGAATGAAAAATGATTATGCTTTTGAATGAAGTTA
GGTTGGGGTAAAGCTGTACCTATTCTCCACATCCAATATACATTCGCTTCTATGATGGAACATACGC
TTCCCCACCTCCATCCGGACTGCCTTTAATGCGCAGCCTAGAGAGCGTTAAAAAACCTAATGCTCC
TATGTTACCGCCACCTAAAAACAAAGAGGATTTGAGAAGACTCTGTGCAAGCCATAGTCAAAGTGTT
ATCCCAACAGAAAGGAATTTGCTCGCCCTGATACATCGAATGATAGAGTTTGTGACGTGAAGGCCAA
TGTTTGAAGCTATGATTATGAACAGAGAAATCAACAATCCTATGTTTCAGGTTCTTATTTGAAAACAGAC
ACCAGCCCATGTTTACTATAGGTGGAAGCTTTATTCTATTCTGCAGGAGATTCTCCAACATAATGGCGG



[View online »](#)

ACGGAAGATTTTCGTATGTTCAAAAATGGATCTTTTTGGAGGCCACCACCATTAAATCCGTA CTTCATG
 GAATGTCAGAAGAGCAAGAAACAGAAGCTTTTGTAGAGGAACCTAGTAAAAAGGGAGCACTTAAGGAAGA
 ACAGAGGGATAAATTGGAAGAAATCTTGCGGGATTAACCTCAAGGAAAAATGATATTGGAGATGCAATG
 GTTTTCTGTCTTAATAATGCTGAAGCTGCTGAAGAAATAGTGGATTGCATTACTGAGTCGTTGTCCATCT
 TAAAGACACCCCTTCTAAAAAGATTGCCAGATTATATTTGGTTTCTGATGTTTTGTACAACCTTTCAGC
 CAAAGTTGCTAATGCTTCATATTATAGAAAATTTTTTGAACAAAGTTATGTCAGATATTTTCAGACCTC
 AATGCCACCTATCGTACAATTCAGGCCATTTACAATCTGAAAACCTTAAAGCAACGGGTAATGACTTGCT
 TCAGAGCATGGGAAGATTGGCAATTTATCCAGAACCATTTTTGATCAAACCTACAAAATATTTCTTAGG
 ACTTGTAAATATTATTGAAGAAAAGGAAACAGAGGATGTTCCAGATGACCTTGATGGTGCCTCCATCGAG
 GAAGAGCTTGATGGTGCACCTCTGGAAGATGTAGATGGAATTCCTATTGATGCTACTCCCATCGATGATC
 TTGATGGAGTCCCTATAAAAAGTCTTGATGATGATCTTGATGGAGTGCCTTTGGATGCAACTGAAGACTC
 AAAAAAGAATGAGCCTATATTTAAAGTTGCCCATCAAATGGGAAGCTGTGGATGAATCTGAATTGGAA
 GCACAGGCTGTTACAACCTCTAAATGGGAATTATTTGACCAGCATGAAGAATCAGAAGAAGAAGAAAATC
 AAAATCAAGAAGAAGAAAGTGAAGATGAAGAAGATACTCAAAGTCCAAATCTGAAGAACATCATTTGTA
 CTCTAATCCAATCAAAGAAGAAATGACTGAGTCTAAGTCTCTAAGTACTCTGAAATGAGTGAGGAAAAA
 CGAGCCAAACTTCGTGAAATTGAGCTCAAAGTTATGAAGTTTCAGGATGAATTGGAATCTGGGAAAAAGC
 CTAAAAAACCAGGCCAGAGTTTTTCAGGAGCAAGTAGAACACTACAGAGATAAACTTCTTCAACGAGAGAA
 AGAGAAAGAGTTAGAAAGAGAACGAGAAAGAGACAAGAAAGATAAAGAAAAATTGGAATCTCGCTCCAAA
 GACAAGAAGGAAAAAGATGAGTGTACTCCGACAAGGAAGGAAAGGAGGCGACACAGTACATCCCCCA
 GCCCATCTCGCAGTAGCAGTGGTAGACGAGTGAATCCCCATCACCAAAATCGGAGCGATCAGAGCGTTC
 AGAAAGATCTCATAAAGAGAGCTCACGGTCCAGGTCATCTCACAAGATTCTCTAGAGATGTTAGCAAA
 AAAGCCAAAAGATCACCATCTGGTTCAAGGACACCTAAAAGGTCAGGCGATCACGGTCTAGATCTCCTA
 AAAAAATCAGGAAAGAAGTCCAGATCCAGTCCAGATCTCCACACAGGTCTCATAAAAAGTCAAAGAAAA
 CAAACAC

ACGCGTACGCGGCCGCTCGAG – GFP Tag – GTTTAA

Protein Sequence:

>RG224434 representing NM_001080415
 Red=Cloning site Green=Tags(s)

MADKTPGGSQKASSKTRSSDVHSSGSSDAHMDASGPSDSMPSRTRPKSPRKHNRYNESARESLCDSPHQ
 NLSRPLLENKLFKAFSIGKMSTAKRTL SKKEQEELKKKEDKAAAEIYEFLAAAFEGSDGNKVKTFVRGGV
 VNAAKEEHETDEKRGKIYKSSRFADQKNPPNQSSNERPPSLLV IETKKPPLKKGEKKKSNLELFKEE
 LKQIQEERDERHKTKGRLSRFEPQSDSDGQRRSMDAPSRNRSSGVLDYAPGSHDVGDPSTTNLYLGN
 INPQMNEEMLCQEFGRFGLASVKIMWPRTDEERARERNCGFVAFMNRDAERALKNLNGKMIMSFEMKL
 GWGKAVPIPPHIYIPPSMMEHTLPPPPSGLPFNAQPRERLKNPNAPMLPPPKNKEDFEKTL SQAIVKVV
 IPTERNLLAL IHRMIEFVVREGPMFEAMIMNREINNPMFRFLFENQTPAHVYYRWKLYSILQGDSPTKWR
 TEDFRMFKNGSFWRPPPLNPLYLHGMSEEQETEAFVEEPSKKGALKEEQRDKLEEILRGLTPRKNDIGDAM
 VFCLNNAEAAEEIVDCITESLSILKTPLPKKIARLYLVSDVLYNSSAKVANASYRKFETKLCQIFSDL
 NATYRTIQGHLQSENFKQRVMTCFRAWEDWAIYEPFLIKLQNIIFLGLVNIIEEKETEDVPDDL DGAPIE
 EELDGAPELVDGIPIDATPIDDL DGVPIKSLDDDL DGVPLDATEDSKKNEPIFKVAPSKWEAVDESELE
 AQAVTTSKWELFDQHEESEEENQNQEESEDEEDTQSSKSEEHLYSNPIKEEMTESKFSKYSEMSEEK
 RAKLREIELKVMKFQDELESGKRPKPGQSFQEQVEHYRDKLLQREKEKELERERERDKKDKELERSK
 DKKEKDECTPTRKERRRHSTSPSPSRSSGRRVKSPPKSERSESRSESHKSSRSRSSHKDSRPRVSK
 KAKRSPSGSRTPKRSRRSRSPKSGKRSRSQSRSPHRSHKSKKNKH

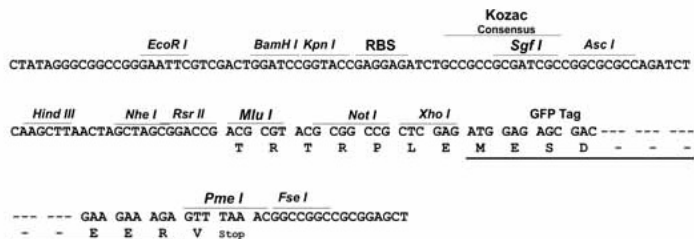
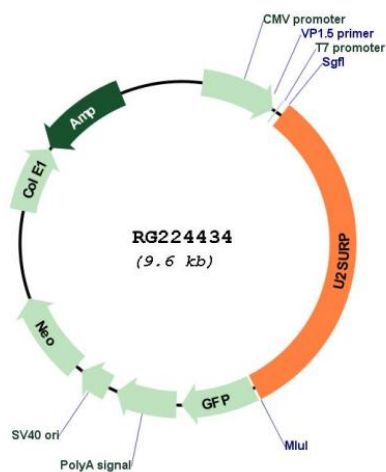
TRTRPLE – GFP Tag – V

Restriction Sites:

Sgfl-MluI

Cloning Scheme:

Cloning sites used for ORF Shutting:


Plasmid Map:

ACCN: NM_001080415

ORF Size: 3087 bp

OTI Disclaimer: The molecular sequence of this clone aligns with the gene accession number as a point of reference only. However, individual transcript sequences of the same gene can differ through naturally occurring variations (e.g. polymorphisms), each with its own valid existence. This clone is substantially in agreement with the reference, but a complete review of all prevailing variants is recommended prior to use. [More info](#)

OTI Annotation:	This clone was engineered to express the complete ORF with an expression tag. Expression varies depending on the nature of the gene.
Components:	The ORF clone is ion-exchange column purified and shipped in a 2D barcoded Matrix tube containing 10ug of transfection-ready, dried plasmid DNA (reconstitute with 100 ul of water).
Reconstitution Method:	<ol style="list-style-type: none">1. Centrifuge at 5,000xg for 5min.2. Carefully open the tube and add 100ul of sterile water to dissolve the DNA.3. Close the tube and incubate for 10 minutes at room temperature.4. Briefly vortex the tube and then do a quick spin (less than 5000xg) to concentrate the liquid at the bottom.5. Store the suspended plasmid at -20°C. The DNA is stable for at least one year from date of shipping when stored at -20°C.
RefSeq:	<u>NM_001080415.2</u>
RefSeq Size:	7464 bp
RefSeq ORF:	3090 bp
Locus ID:	23350
UniProt ID:	<u>O15042</u>
Cytogenetics:	3q23
Protein Pathways:	Spliceosome