

## Product datasheet for **RG224431**

### Aftiphilin (AFTPH) (NM\_203437) Human Tagged ORF Clone

#### Product data:

Product Type:	Expression Plasmids
Product Name:	Aftiphilin (AFTPH) (NM_203437) Human Tagged ORF Clone
Tag:	TurboGFP
Symbol:	Aftiphilin
Synonyms:	Nbla10388
Mammalian Cell Selection:	Neomycin
Vector:	pCMV6-AC-GFP (PS100010)
E. coli Selection:	Ampicillin (100 ug/mL)



[View online »](#)

**ORF Nucleotide Sequence:**

>RG224431 representing NM\_203437  
 Red=Cloning site Blue=ORF Green=Tags(s)

TTTTGTAATACGACTCACTATAGGGCGGCCGGAATTCGTCGACTGGATCCGGTACCGAGGAGATCTGCC  
 GCC**CGGATCGCC**

ATGGAGCCAGACATCATTCAATGTACTCTTCATCCCCACCACCATTAGACAATGGAGCAGAGGATGATG  
 ATGATGATGAATTTGGGGAATTTGGTGGTTTTTCAGAAGTTAGCCCTTCTGGTGTAGGGTTTGTGATTT  
 CGATACACCAGATTATACTCGTCCCAAGGAAGAGTTTGTACCTTCAAACATTTTATGCCAATTCATGAA  
 TTCTCAGAAAATGTAGATAGCCTTACAAGCTTTAAGTCCATTAATAATGGTAATGATAAGGACATCACTG  
 CTGAACTTTCTGCTCCTGTGAAAGGACAGTCTGATGTTTTACTTTCTACCACCAGCAAAGAAATAATTTT  
 ATCTGAAATGTTAGTACTTCCATTGATGGCATGGAAAGACCAGGAAATTTAAATAAAGTAGTGGAGCAG  
 AGACAGAATGTTGGAACACTTCAAAGTTTCTCTCCAGGAGATTTAGAACTAATATGAATGTTGTTTCATC  
 AAAACAAGCAGTTAGAGAGCTGCAATGGTAAAAGCCTCCTGTCTGGAGATTCTAACAAATGGGTTTGC  
 AGTGTGGAAACTGTAATCCTCAGGGAACAGATGATCTGGACAATGTAGCTGATTCAAAGGACCGAAG  
 CCTCTTAGCACTCATAGCACTGAGTATAATTTAGACTCTGTACCTAGTCCGTGCTGAGGAATTTGAGATT  
 TTGCCACATTTTCCAAAAGGAAAGGATACAATTAGAAGAAATAGAATGTGCAGTTTTAAATGATAGAGA  
 AGCACTAACCATTCGGGAAAACAATAAAATTAATAGAGTCAATGAACTGAATTTCTGTAAAAGAAGTGGCT  
 TTGGGTAGAAGCTTGGATAACAAAGGAGACACTGATGGAGAGGATCAGGTTTGTGTTTCAGAAAATAAGCA  
 TAGTGACTAACAGAGGTTTCAAGTGTGAAAAACAAGGCCCTTCAAACACTGCAACAGGATGAATTTTACA  
 GTCAGGTGTTCAAGGCTTGGAGTTTGGTAGACTCAGCTGATAATTCAGAAGCCATTAGGAGAGAA  
 CAATGTAAGTGAAGAAAACCTGACTTACTTACTTCTAAATGTGCTCACCTATGCATGGATTCTGTTA  
 AAATCTGTGATGAAGTTGGTTCTCCCAAAGAAGAAAGTGAAGTTTACTAATTTCCAAAGCCCAAA  
 CATTGACCCACAGAAGAAAATGATTTGGATGATTTCTTTAAGTGTAAAAAATGGTGATAGTAGTAATGAC  
 TTTGTGACTTGAATGATATCAATGAAGATGATTTTGGTATTTTGGTACTTTGGCTCTGCCAGTGGCT  
 CACTCCACCTTTTGTACTGGTACTCAAGATTCAATGAGTGTGCCACTTTTGAAGAGTCTTCAGAGCA  
 CTTTCCACATTTTGTGAAACAGGTGATGACTTTGGAGAATTTGGGGATATAATGCTGTTTCTTGCCAA  
 GAGGAGACAATATTAACAAAGTCAAGCTTAAAACAGACTTCTGATAATTTATCAGAAGAATGTCAATTTGG  
 CAAGAAAATCTAGTGAACAGGCACTGAACCTGTTGCAAACTTAAAAATGGGCAAGAAGGTGAGATTGG  
 ACATTTTGATTCTGTGCCAAATATTCAGGATGACTGCAATGGTTTTCAAGACTCTGATGATTTTGCAGAC  
 TTCAGTTCAGCTGGTCTAGCCAAGTTGTAGATTGGAATGCTTTTGGAGTGAACAAAAAGATAGTTGTT  
 CTTGGGCTGCTTTTGGAGACCAGCAGGCTACTGAATCTCATCATCGAAAGGAAGCCTGGCAGTCACATAG  
 GACAGATGAAAATATTGATACTCCAGGAACCCCAAAACGCACAGTGTACCTTCAGCAACTTCCAAGGA  
 GCAGTTGCTAGTGGCCATTTACAGGAATCAGCCACTTCAGTTCAGACAGCTTTATTAACCCGCTGGAGC  
 GAATTTTTCGAAGCATGTTTTCTTCCACTTGTCCCTGATGCTGAAGAGGAAGTTACTTCCCTGAAGCA  
 CTTGCTGGAAACAAGCACTTTGCCAATAAAAACGAGAGAGGCCTTACCTGAAAGTGGGGAATGCTAGAT  
 GTGTGGACTGAGCTACAGGATATCCATGATGCACATGGCTTGAGATACCAGTGGGCGGCTCCCATAGCA  
 ACAAGAAGCTTTTGTCTCCTTGGGAATAGACACCCGAAACATTTCTTTCAGGGCAATAAGAAGCAGCC  
 TGTTATAGTGCCCATGTATGCAGCAGGATTGGGTATGTTAGACCCACCAAGGAACCACTGAAACCACTT  
 TCTGCTGCAGAAAAAATAGCTTCCATCGGTCAGACAGCCACCATGTCAACAGATATGAACACATGTACAT  
 CTGATCAGTTCAGGAGTCTCTACCACCCGTCCAGTTTACTGGAGTAGCAGTGGCCTTACTAACCCCTT  
 AGATGCTAGTGGAGGTTCCACTCTTCTGAACCTTGATTTCTTTGGGCCCGTGGATGACAGTAGCTTAGC  
 AGCAGCACCAATCCCAGGTGTGGATCCGGAGTTGTATGAGTTAACTTCTAAGCTGGAAATCTCCA  
 CCTCAAGCCTCAAAGTACTGATGCATTTGCAAGACTCATGTCTACAGTAGAGAAGACAAGCACATCTAC  
 CAGGAAACCGAAAAGAGAAGAGCACCTAAGTGAAGAAGCTATCAAGGTGATCGCTGGCCTTCTGACTTA  
 ACATTCATGCATGCCAAGGTGTTGATGTTCCAGCCACGTTAACACCTTCCACAAGCTCTCAAGAAAAAG  
 CAGACGGA

**ACGCGT**ACGCGGCCGCTCGAG - GFP Tag - GTTTAA

**Protein Sequence:** >RG224431 representing NM\_203437  
 Red=Cloning site Green=Tags(s)

MEPDIIRMYS SSPPLDNGAEDDDDEFGEFGGFSEVSPSGVGFVDFDTPDYTRPKEEFVPSNHFMPIHE  
 FSENVDSLTSFKSIKNGNDKIDITAEASAPVKGQSDVLLSTTSKEIISSEMLATSIDGMRPGNLNKVVEQ  
 RQNVGTLESFSPGDFRTNMNVVHQNKQLESCNGEKPPCLEILTNGFAVLETVNPQGTDDLDNVADSKGRK  
 PLSTHSTEYNLDSVPSAEFFADFATFSKKERIQLEEIECAVLNDREALTIRENNKINRVNELNSVKEVA  
 LGRSLDNKGD TDGEDQVCVSEISIVTNRGFSVEKQGLPTLQQDEF LQSGVQSKAWSLVDSADNSEAIRRE  
 QCKTEEKLDLLTSKCAHLCDMSVKTSDDEVGSPKEESRKFTNFQSPNIDPTEENDLDDLSVKNGDSSND  
 FVTCNDINEDDFGDFGDFGSASGTPPFVTGTQDSMSDATFEESSEHFPHFSEPGDDFGEFGDINAVSCQ  
 EETILTKSDLKQTSNDLSEECQLARKSSGTGTEPVAKLKNGQEGEIGHFDSVPNIQDDCNGFQSDDDFAD  
 FSSAGPSQVVDWNAFEDEQKDCSWAAGDQQATESHHRKEAWQSHRTDENIDTPGTPKTHSVPSATSKG  
 AVASGHLQESATSVQTALLNRLERIFEACFPSILVPDAEEEVTS LKHLLTSTLP IKTREALPESGELL  
 VTELQDIHDAHGLRYQWGGSHSNKLLSSLGIDTRNILFTGNKKQPVI VPMYAAGLGMLEPTKEPLKPL  
 SAAEKIASIGQATMSPDMNTCTSDQFQESLPPVQFDWSSSGLTNPLDASGGSTLLNLDFFGPVDDSSSS  
 SSTTIPGVDP ELYELTTSKLEISTSSLKVTDARLMSTVEKTSTSTRPKREEHLSEEAIKVIAGLPDL  
 TFMHAKVLMFPATLTPSTSSQEKADG

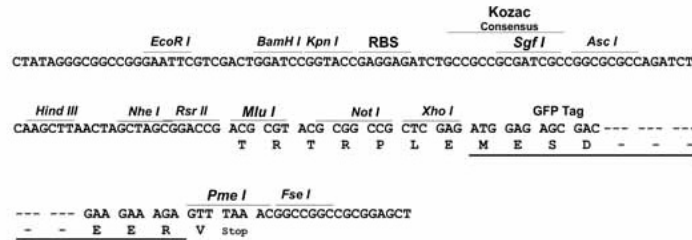
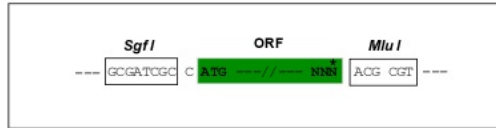
TRTRPLE - GFP Tag - V

**Restriction Sites:**

SgfI-MluI

**Cloning Scheme:**

Cloning sites used for ORF Shuttling:

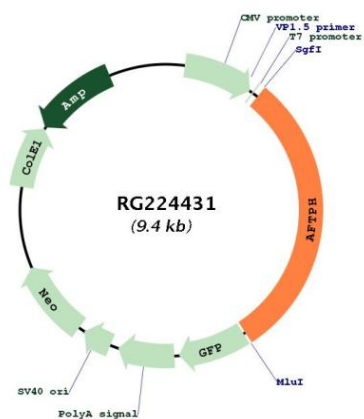


**ACCN:** NM\_203437

**ORF Size:** 2808 bp

<b>OTI Disclaimer:</b>	<p>Due to the inherent nature of this plasmid, standard methods to replicate additional amounts of DNA in E. coli are highly likely to result in mutations and/or rearrangements. Therefore, OriGene does not guarantee the capability to replicate this plasmid DNA. Additional amounts of DNA can be purchased from OriGene with batch-specific, full-sequence verification at a reduced cost. Please contact our customer care team at <a href="mailto:custsupport@origene.com">custsupport@origene.com</a> or by calling 301.340.3188 option 3 for pricing and delivery.</p> <p>The molecular sequence of this clone aligns with the gene accession number as a point of reference only. However, individual transcript sequences of the same gene can differ through naturally occurring variations (e.g. polymorphisms), each with its own valid existence. This clone is substantially in agreement with the reference, but a complete review of all prevailing variants is recommended prior to use. <a href="#">More info</a></p>
<b>OTI Annotation:</b>	This clone was engineered to express the complete ORF with an expression tag. Expression varies depending on the nature of the gene.
<b>Components:</b>	The ORF clone is ion-exchange column purified and shipped in a 2D barcoded Matrix tube containing 10ug of transfection-ready, dried plasmid DNA (reconstitute with 100 ul of water).
<b>Reconstitution Method:</b>	<ol style="list-style-type: none"> <li>1. Centrifuge at 5,000xg for 5min.</li> <li>2. Carefully open the tube and add 100ul of sterile water to dissolve the DNA.</li> <li>3. Close the tube and incubate for 10 minutes at room temperature.</li> <li>4. Briefly vortex the tube and then do a quick spin (less than 5000xg) to concentrate the liquid at the bottom.</li> <li>5. Store the suspended plasmid at -20°C. The DNA is stable for at least one year from date of shipping when stored at -20°C.</li> </ol>
<b>RefSeq:</b>	<a href="#">NM_203437.3</a> , <a href="#">NP_982261.2</a>
<b>RefSeq Size:</b>	4135 bp
<b>RefSeq ORF:</b>	2811 bp
<b>Locus ID:</b>	54812
<b>UniProt ID:</b>	<a href="#">Q6ULP2</a>
<b>Cytogenetics:</b>	2p14
<b>Gene Summary:</b>	May play a role in membrane trafficking.[UniProtKB/Swiss-Prot Function]

Product images:



Circular map for RG224431