

Product datasheet for **RG224417**

PDE9A (NM_001001574) Human Tagged ORF Clone

Product data:

Product Type:	Expression Plasmids
Product Name:	PDE9A (NM_001001574) Human Tagged ORF Clone
Tag:	TurboGFP
Symbol:	PDE9A
Synonyms:	HSPDE9A2
Mammalian Cell Selection:	Neomycin
Vector:	pCMV6-AC-GFP (PS100010)
E. coli Selection:	Ampicillin (100 ug/mL)



[View online »](#)

ORF Nucleotide Sequence:

>RG224417 representing NM_001001574
 Red=Cloning site Blue=ORF Green=Tags(s)

TTTTGTAATACGACTCACTATAGGGCGGCCGGAATTCGTCGACTGGATCCGGTACCGAGGAGATCTGCC
 GCC**CGGATCGCC**

ATGGGATCCGGCTCCTCCAGCTACCGGCCAAGGCCATCTACCTGGACATCGATGGACGCATTGAGAAGG
 TAATCTTCAGCAAGTACTGCAACTCCAGCGACATCATGGACCTGTTCTGCATCGCCACCGCCTGCCTCG
 CACTCCGTACAAAAGTGAGACCTGTGGCCATCAAGCAACTCTCCGAGAGAGAAGAATTAATCCAGAGCGTG
 CTGGCGCAGGTTGCAGAGCAGTTCTCAAGAGCATTCAAAATCAATGAACTGAAAGCTGAAGTTGCAATC
 ACTTGGCTGTCTAGAGAAACCGGTGGAATTGGAAGGACTAAAAGTGGTGGAGATTGAGAAATGCAAGAG
 TGACATTAAGAAGATGAGGGAGGAGCTGGCGCCAGAAGCAGCAGGACCAACTGCCCTGTAAGTACAGT
 TTTTTGGATAACCAAGAAGTTGACTCCTCGACGCGATGTTCCCACTTACCCCAAGTACCTGCTCTCTC
 CAGAGACCATCGAGGCCCTCGGAAGCCGACCTTTGACGTCTGGCTTTGGGAGCCCAATGAGATGCTGAG
 CTGCCTGGAGCACATGTACCACGACCTCGGGCTGGTCAGGGACTTCAGCATCAACCCTGTCACCCTCAGG
 AGGTGGCTGTTCTGCGTCCACGACAACACAGAAACAACCCCTTCCACAACCTCCGGCACTGCTTCTGCG
 TGGCCAGATGATGTACAGCATGGTCTGGCTCTGCACTCTCCAGGAGAAGTTCTCACAACCGGATATCCT
 GATCCTAATGACAGCGGCCATCTGCCACGATCTGGACCATCCCGCTACAACAACACGTACCAGATCAAT
 GCCCGCACAGAGCTGGCGGTCCGCTACAATGACATCTCACCGCTGGAGAACCACCACTGCGCCGTGGCCT
 TCCAGATCCTCGCCGAGCCTGAGTGAACATCTTCTCCAACATCCCACTGATGGGTTCAAGCAGATCCG
 ACAGGGAATGATCACATTAATCTTGGCCACTGACATGGCAAGACATGCAGAAATTATGGATTCTTTCAA
 GAGAAAATGGAGAATTTGACTACAGCAACGAGGAGCACATGACCCTGCTGAAGATGATTTTATAAAAAT
 GCTGTGATATCTTAACGAGGTCCTCAATGGAAGTCGACAGCCTTGGGTGGACTGTTTATTAGAGGA
 ATATTTTATGCAGAGCGACCGTGAGAAGTCAGAAGGCCTTCTGTGGCACCGTTCATGGACCGAGACAAA
 GTGACCAAGGCCACAGCCAGATTGGGTTCAAGTTTGTCTGATCCCAATGTTTGAACAGTGACCA
 AGCTCTTCCCATGGTTGAGGAGATCATGCTGCAGCCACTTTGGGAATCCCGAGATCGCTACGAGGAGCT
 GAAGCGGATAGATGACGCCATGAAAGAGTTACAGAAGAAGACTGACAGCTTGACGTCTGGGGCCACCGAG
 AAGTCCAGAGAGAGAAGCAGAGATGTGAAAAACAGTGAAGGAGACTGTGCC

ACGGGCCGCTCGAG - GFP Tag - GTTTAA

Protein Sequence:

>RG224417 representing NM_001001574
 Red=Cloning site Green=Tags(s)

MGS GSSSYRPKAIYLDIDGRIQKVIKSKYCNSSDIMDLFCIATGLPRTPYKVRPVAIKQLSEREELIQSV
 LAQVAEQFSRAFKINELKAEVANHLAVLEKRVLEGLKVVIEKCKSDIKKREELAARSSRTNCPCKYS
 FLDNHKKLTTPRDVPTYPKYLLSPETIEALRKPTFDVWLWEPNEMLSCLEHMYHDLGLVRDFSINPVTLR
 RWLFCVHDNYRNNPFHFRHCFVAQMMYSMVWLCSLQEKFSQTDILILMTAAICHDLDPGYNNTYQIN
 ARTELAVRYNDISPLENHHCAVAFQILAEPECNIFSNIPPDGFKQIRQGMITLILATDMARHAEIMDSFK
 EKMFDFYSNEEHMTLLKMLIKCCDISNEVRPMEVAEPWVDCLLEEFMQSDREKSEGLPVAPFMDRDK
 VTKATAQIGFIKFLIPMFETVTKLFPVVEIMLQPLWESRDYEELKRIDDAMKELQKKTDSLTSGATE
 KSRERSRDVKNSEGDCA

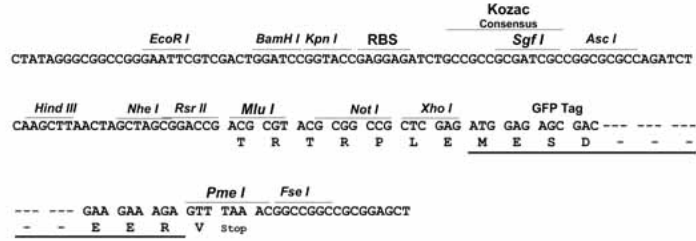
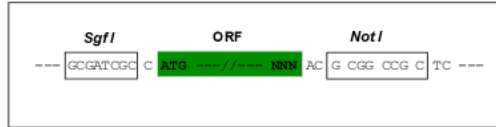
TRPLE - GFP Tag - V

Restriction Sites:

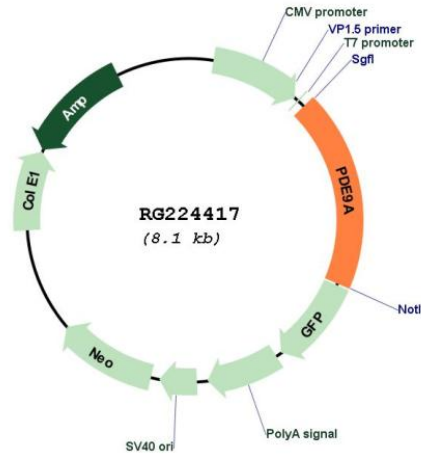
Sgfl-NotI

Cloning Scheme:

Cloning sites used for ORF Shutting:



Plasmid Map:



ACCN: NM_001001574

ORF Size: 1521 bp

OTI Disclaimer: The molecular sequence of this clone aligns with the gene accession number as a point of reference only. However, individual transcript sequences of the same gene can differ through naturally occurring variations (e.g. polymorphisms), each with its own valid existence. This clone is substantially in agreement with the reference, but a complete review of all prevailing variants is recommended prior to use. [More info](#)

OTI Annotation: This clone was engineered to express the complete ORF with an expression tag. Expression varies depending on the nature of the gene.

Components: The ORF clone is ion-exchange column purified and shipped in a 2D barcoded Matrix tube containing 10ug of transfection-ready, dried plasmid DNA (reconstitute with 100 ul of water).

Reconstitution Method:

1. Centrifuge at 5,000xg for 5min.
2. Carefully open the tube and add 100ul of sterile water to dissolve the DNA.
3. Close the tube and incubate for 10 minutes at room temperature.
4. Briefly vortex the tube and then do a quick spin (less than 5000xg) to concentrate the liquid at the bottom.
5. Store the suspended plasmid at -20°C. The DNA is stable for at least one year from date of shipping when stored at -20°C.

RefSeq: [NM_001001574.1](#), [NP_001001574.1](#)

RefSeq Size: 1845 bp

RefSeq ORF: 1524 bp

Locus ID: 5152

UniProt ID: [O76083](#)

Cytogenetics: 21q22.3

Protein Families: Druggable Genome

Protein Pathways: Progesterone-mediated oocyte maturation, Purine metabolism

Gene Summary: The protein encoded by this gene catalyzes the hydrolysis of cAMP and cGMP to their corresponding monophosphates. The encoded protein plays a role in signal transduction by regulating the intracellular concentration of these cyclic nucleotides. Multiple transcript variants encoding several different isoforms have been found for this gene. [provided by RefSeq, Jul 2008]