

## Product datasheet for **RG224400**

### ADAMTSL4 (NM\_019032) Human Tagged ORF Clone

#### Product data:

Product Type:	Expression Plasmids
Product Name:	ADAMTSL4 (NM_019032) Human Tagged ORF Clone
Tag:	TurboGFP
Symbol:	ADAMTSL4
Synonyms:	ADAMTSL-4; ECTOL2; TSRC1
Mammalian Cell Selection:	Neomycin
Vector:	pCMV6-AC-GFP (PS100010)
E. coli Selection:	Ampicillin (100 ug/mL)
ORF Nucleotide Sequence:	>RG224400 representing NM_019032 Red=Cloning site Blue=ORF Green=Tags(s)

TTTTGTAATACGACTCACTATAGGGCGGCCGGAATTCGTCGACTGGATCCGGTACCGAGGAGATCTGCC  
GCC**CGATCGCC**

ATGGAGAAGTGGACTGGCAGGCCCTGGCTGTATCTGCTGCTGCTTCTGTCCCTCCCTCAGCTCTGCTTGG  
ATCAGGAGGTGTTGTCCGGACACTCTTTCAGACACCTACAGAGGAGGGCCAGGGCCCCGAAGGTGTCTG  
GGGACCTTGGGTCCAGTGGCCCTTGTCTCCAGCCCTGCGGGGTGGGGTGCAGCGCAGGAGCCGGACA  
TGTCAGCTCCCTACAGTGCAGCTCCACCCGAGTCTGCCCTCCCTCCCCGGCCCCAAGACATCCAGAAG  
CCCTCCTCCCCGGGGCCAGGGTCCAGACCCAGACTTCTCCAGAAACCCTCCCTTGTACAGGACACA  
GTCTCGGGGAAGGGTGGCCACTTCGAGGTCCCGCTTCCACCTAGGGAGAGAGGAGACCCAGGAGATT  
CGAGCGGCCAGGAGGTCCCGGCTTCGAGACCCATCAAGCCAGGAATGTTTCGGTTATGGGAGAGTGCCCT  
TTGCATTGCCACTGCACCGGAACCGCAGGCACCCTCGGAGCCACCCAGATCTGAGCTGTCCCTGATCTC  
TTCTAGAGGGGAAGAGGCTATTCGTCCTACTCCAAGAGCAGAGCCATTCTCCGAAACGGCAGCCCC  
CAAAGTGAAGTCCCTCCACAGAAGTGTCTGTCCACACCCATCCCCCAAGCAGAACCTTAAGCCCTG  
AAACTGCTCAGACAGAGGTGGCCCCAGAACCAGGCCTGCCCCCTACGGCATCACCCAGAGCCAGGC  
CTCTGGCAGAGACCCCTCACCCAGCACTCCTTAGGAGAAGGTGGCTTCTCCGTGCATCCCCTCAG  
CCACGAAGGCCAAGTCCCAGGGTTGGCCAGTCCCAGGTAGCAGGGAGAGCCCTGATCCTTTTCCTT  
CGGTCCCTCGGGGCCAGGCCAGCAGGGCCAAGGCCTTGGGGAACGGGGGGACTCCTCACGGGCCCG  
CCTGGAGCCTGACCCTCAGCACCCGGGCGCTGGCTGCCCTGCTGAGCAACGGCCCCATGCCAGCTCC  
CTCTGGAGCCTCTTGTCTCCAGTAGCCCTATTCCAAGATGTTCTGGGAGAGTGAACAGCTAAGAGCCT  
GCAGCCAAGCGCCCTGCCCCCTGAGCAGCCAGACCCCGGGCCCTGCAGTGCGCAGCCTTTAACTCCCA  
GGAATTTCATGGGCCAGCTGTATCAGTGGGAGCCCTTCACTGAAGTCCAGGGCTCCAGCGCTGTGAAGT  
AACTGCCGGCCCCGTGGCTTCCGCTTCTATGTCCGTACACTGAAAGGTCCAGGATGGGACCCTGTGTC  
AGCCTGGAGCCCTGACATCTGTGTGGCTGGACGCTGTCTGAGCCCCGGCTGTGATGGGATCCTTGGCTC  
TGGCAGGCGTCTGATGGCTGTGGAGTCTGTGGGGGTGATGATTCTACCTGTCGCTTGTTCGGGGAAC



[View online »](#)

```
CTCACTGACCGAGGGGGCCCCCTGGGCTATCAGAAGATCTTGTGGATTCCAGCGGGAGCCTTGGCGCTCC
AGATTGCCAGCTCCGGCCTAGCTCCAACCTACCTGGCACTTCGTGGCCCTGGGGCCCGTCCATCATCAA
TGGGAAGTGGGCTGTGGATCCCCCTGGGTCTACAGGGCCGGCGGGACCGTCTTTCGATATAACCGTCTT
CCCAGGGAGGAGGGCAAAGGGGAGAGTCTGTGGCTGAAGGCCACCACCCAGCCTGTGGATGTCTATA
TGATCTTTCAGGAGGAAAACCCAGGCGTTTTTATCAGTATGTCATCTCTCACCTCCTCCAATCCTTGA
GAACCCACCCAGAGCCCCCTGTCCCCAGCTTCAGCCGGAGATTCTGAGGGTGGAGCCCCCACTTGCT
CGGCACCCCGCCAGCCCGGACCCAGCACCTCCAGCGTCAGGTGGGATCCCCAGATCCCCGCC
CGCCCCATCCCAGGACACCCCTGGGGTCTCCAGCTGCGTACTGGAACGAGTGGGACACTCTGCATGCTC
AGCGTCTGCGGGAAAGGTGTCTGGCGCCCCATTTTCTCTGCATCTCCCGTGAGTCGGGAGAGGAACTG
GATGAACGCAGCTGTGCCGCGGGTCCAGGCCCCAGCCTCCCCTGAACCCTGCCACGGCACCCCATGCC
CCCCATACTGGGAGGCTGGCGAGTGGACATCTGCAGCCGCTCCTGTGGCCCCGGCACCCAGCACCGCCA
GCTGCAGTCCCGGAGGAATTTGGGGGGGTGGCTCCTCGGTGCCCGGAGCGCTGTGGACATCTCCCC
CGGCCAACATCACCCAGTCTTGCCAGCTGCGCCTCTGTGGCCATTGGGAAGTTGGCTCTCCTTGGAGCC
AGTGCTCCGTGCGGTGCGGCCGGGGCCAGAGAAGCCGGCAGGTTTCGTGTGTTGGGAACAATGGTATGA
AGTGAGCGAGCAGGAGTGTGCGTCAGGCCCCCCGAGCCCCCAGCAGAGAGGCCCTGTGACATGGGGCCC
TGTAATACTGCCTGGTCCACAGCGACTGGAGCTCCAAGTGCTCAGCCGAGTGTGGGACGGGAATCCAGC
GGCGCTCTGTGGTCTGCCTTGGGAGTGGGGCAGCCCTCGGGCCAGGCCAGGGGGAAGCAGGAGCAGGAAC
TGGGCAGAGCTGTCCAACAGGAAGCCGGCCCCCTGACATGCGCGCCTGCAGCCTGGGGCCCTGTGAGAGA
ACTTGGCGCTGGTACACAGGGCCCTGGGGTGGTGTCTCCTCCGAATGTGGCTCTGGCACACAGCGTAGAG
ACATCATCTGTGTATCCAACTGGGGACGGAGTTCAACGTGACTTCTCCGAGCAACTGTTCTCACCTCCC
CAGGCCCCCTGCCCTGCAGCCCTGTCAAGGGCAGGCTGCCAGGACCGATGGTTTTCCACGCCCTGGAGC
CCATGTTCTCGCTCCTGCCAAGGGGGAACGACAGACCGGGAGGTCAGTGCCTGAGCACCACCCAGACCC
TCAGACCCGATGCCCTCCTCAACTGCGGCCCTCCAGGAAGCGCCCTGTAAACAGCCAACCTGCAGCCA
CGGCCCTGATGATCAATGCAAGGACAGCTCTCCACATTGCCCCCTGGTGGTACAGGCCCGCTCTGGCTC
TACCCCTACTACAGCCACCTGTTGCCGCTCTTGCGCACATGTCTGGAGCGGTCTCCCCAGGATCCCT
CC
```

ACGCGTACGCGGCCGCTCGAG – GFP Tag – GTTTAA

**Protein Sequence:**

>RG224400 representing NM\_019032

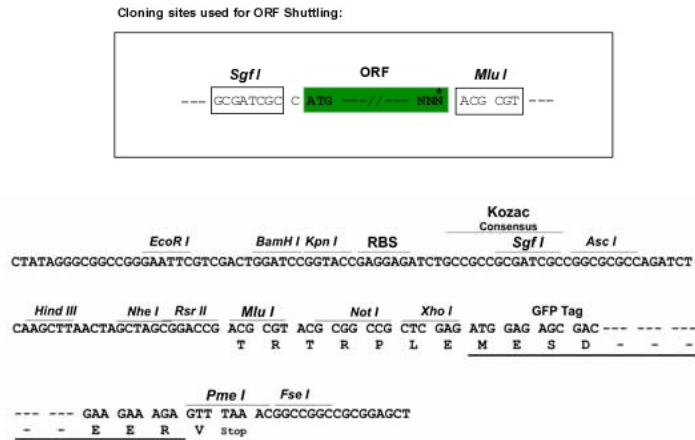
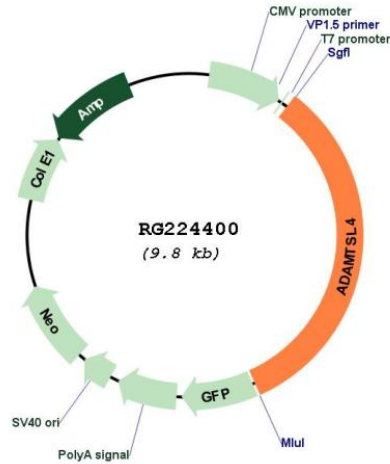
Red=Cloning site Green=Tags(s)

```
MENWTGRPWLYLLLLSLPQLCLDQEVLSGHSLSQTPTEEGQGPEGVWGPWVQWASCSQPCGVGVQRRSRT
CQLPTVQLHPSLPLPPRPPRHEALLPRGQGRPQTSPETLPLYRTQSRGRGGLRGPASHLGREETQEI
RAARRSRLRDPKPGMFGYGRVPFALPLHRNRHPRSPRSELSLISRGEEAIPSPTPRAEPPFASANGSP
QTELPPELTVHSPQAEPLSPETAQTEVAPRTRPAPLRHHPRAQASGTEPPSPHSLGEGGFRRASPQ
PRRPSQGWASPVAGRRPDPFSPVPRGRGQQGQGPWGTGGTTPHGPRLEPDPQHPGAWLPLLSNGPHASS
LWSLFAPSSPIPRCSGESEQLRACSQAPCPPEQDPDRALQCAAFNSQEFMGQLYQWEPFTEVQGSQRCEL
NCRPRGRFRFYVRHTEKVQDGLCQPGAPDLCVAGRCLSPGCDGILGSGRRPDGCGVCGDDSTCRLVSGN
LTDRGGPLGYQKILWIPAGALRLQIAQLRPSSNYLALRGPGRSIIINGNWAVDPPGSYRAGTTFVFRYNRP
PREEGKESLSAEGPTTQPDVYMIQFQENPGVFYQYVISSPPPILENPTPEPPVQLQPEILRVEPPLA
PAPRPARTPGTLQRQVRIPQMPAPPHRTPPLGSPAAYWKRVGHSACSASCCKGVWRPIFLCISRESGEE
LDERSCAAGARPPASPEPCHGTPCPPYWEAGEWTSRSCSGPGTQHRQLQCRQEFGGGSSVPPERCGHLP
RPNITQSCQLRLCGHWEVGSVWQCSVRCGRGQRSRQVRCVGNNGDEVSEQECASGPPQPPSREACDMGP
CTTAWFHSDWSSKCSAECGTGIQRRSVVCLGSGAALGPGQGEAGAGTGQSCPTGSRPPDMRACSLGPCER
TWRWYTGWPWGECSSECGSGTQRRDIIICVSKLGTGFNVTSPSNCSHLRPPALQPCQGGACQDRWFSTPWS
PCSRSCGGTQTREVQLSTNQTLSTRCPPLRPSRKRPCNSQPCSRPDDQCKDSSPHCLPLVVQARLCV
YPIYTATCCRSCAHLERSPDPS
```

TRTRPLE – GFP Tag – V

**Restriction Sites:**

Sgfl-MluI

**Cloning Scheme:**

**Plasmid Map:**


**ACCN:** NM\_019032

**ORF Size:** 3222 bp

**OTI Disclaimer:** The molecular sequence of this clone aligns with the gene accession number as a point of reference only. However, individual transcript sequences of the same gene can differ through naturally occurring variations (e.g. polymorphisms), each with its own valid existence. This clone is substantially in agreement with the reference, but a complete review of all prevailing variants is recommended prior to use. [More info](#)

**OTI Annotation:** This clone was engineered to express the complete ORF with an expression tag. Expression varies depending on the nature of the gene.

<b>Components:</b>	The ORF clone is ion-exchange column purified and shipped in a 2D barcoded Matrix tube containing 10ug of transfection-ready, dried plasmid DNA (reconstitute with 100 ul of water).
<b>Reconstitution Method:</b>	<ol style="list-style-type: none"><li>1. Centrifuge at 5,000xg for 5min.</li><li>2. Carefully open the tube and add 100ul of sterile water to dissolve the DNA.</li><li>3. Close the tube and incubate for 10 minutes at room temperature.</li><li>4. Briefly vortex the tube and then do a quick spin (less than 5000xg) to concentrate the liquid at the bottom.</li><li>5. Store the suspended plasmid at -20°C. The DNA is stable for at least one year from date of shipping when stored at -20°C.</li></ol>
<b>RefSeq:</b>	<a href="#">NM_019032.6</a>
<b>RefSeq Size:</b>	4209 bp
<b>RefSeq ORF:</b>	3225 bp
<b>Locus ID:</b>	54507
<b>UniProt ID:</b>	<a href="#">Q6UY14</a>
<b>Cytogenetics:</b>	1q21.2
<b>Domains:</b>	tsp_1
<b>Protein Families:</b>	Secreted Protein
<b>Gene Summary:</b>	This gene is a member of ADAMTS (a disintegrin and metalloproteinase with thrombospondin motifs)-like gene family and encodes a protein with seven thrombospondin type 1 repeats. The thrombospondin type 1 repeat domain is found in many proteins with diverse biological functions including cellular adhesion, angiogenesis, and patterning of the developing nervous system. Alternate transcriptional splice variants, encoding different isoforms, have been characterized. [provided by RefSeq, Sep 2014]