

Product datasheet for **RG224397**

GRID1 (NM_017551) Human Tagged ORF Clone

Product data:

Product Type:	Expression Plasmids
Product Name:	GRID1 (NM_017551) Human Tagged ORF Clone
Tag:	TurboGFP
Symbol:	GRID1
Synonyms:	GluD1; GluD1-b
Mammalian Cell Selection:	Neomycin
Vector:	pCMV6-AC-GFP (PS100010)
E. coli Selection:	Ampicillin (100 ug/mL)
ORF Nucleotide Sequence:	>RG224397 representing NM_017551 Red=Cloning site Blue=ORF Green=Tags(s)

TTTTGTAATACGACTCACTATAGGGCGGCCGGAATTCGTCGACTGGATCCGGTACCGAGGAGATCTGCC
GCC**CGATCGCC**

ATGGAAGCGGTGACGCTGTGGCTTCTCCCTGGATATGCCAGTGCCTGTCGGTGC GGCCGACTCCATCA
TCCACATCGGTGCCATCTTCGAGGAGAACGCGCCAAGGACGACAGGGTGTCCAGTTGGCGGTATCCGA
CCTGAGCCTCAACGATGACATCCTGCAGAGCGAGAAGATCACCTACTCCATCAAGGTCATCGAGGCCAAC
AACCCATTCCAGGCTGTGCAGGAAGCCTGTGACCTCATGACCCAGGGGATTTGGCCTTGGTCACGTCCA
CTGGCTGTGCATCTGCCAATGCCCTGCAGTCCCTCACGGATGCCATGCACATCCCACACCTTTTGTCCA
GCGCAACCCGGGAGGGTGCACACGACCCGATGCCACCTGAACCCAGCCCCGATGGTGAGGCCTACACA
CTGGCTTCGAGACCACCCGTCGCCCTCAATGATGTCATGCTCAGGCTGGTGACGGAGCTGCGCTGGCAGA
AGTTTCGTCATGTTCTACGACAGCGAGTATGATATCCGTGGGCTTCAAAGCTTTCTGGACCAGGCCTCGCG
GCTGGGCTTGACGTCTCTTTACAAAAGGTGGACAAGAACATTAGCCACGTATTCACCAGCCTTTCACC
ACGATGAAGACAGAGGAGCTGAATCGCTACCGGGACACGCTTCGCCGCGCCATCTGTGCTCAGCCAC
AGGGAGCCCACTCTTCATCAACGAGGCCGTGGAGACCAACCTGGCTTCCAAGGACGCCACTGGGTCTT
TGTGAATGAGGAAATCAGTGACCCGGAGATCCTGGATCTGGTCCATAGTGCCTTGAAGGATGACCGTG
GTCCGGCAAATCTTTCCGTCTGCAAAGGACAATCAGAAATGCACGAGGAACAACCACCCGATCTCCCTCC
TGCTCTGCGACCCCAAGGAGGCTACCTCCAGATGCTGCAGATCTCCAACCTCTATCTGTATGACAGTGT
TCTGATGCTGGCCAACGCCCTTTCACAGGAAGCTGGAGGACCGGAAGTGGCATAGCATGGCGAGCCTCAAC
TGCATACGGAAATCCACTAAGCCATGGAATGGTGGGAGGTCCATGCTGGATACCATCAAAAAGGGCCACA
TCACTGGCCTCACTGGGGTATGGAGTTTCGGGAGGACAGTTCGAATCCCTATGTCCAGTTTGAAATCCT
TGGCACTACCTATAGTGAGACTTTTGGCAAAGACATGCGCAAGTTGGCGACATGGGACTCAGAGAAGGGC
TTGAATGCCAGCTTGAAGAGAGGCCCATGGGCAGCCGCTCCAAGGATTGACTCTAAAGTGGTGACTG
TCTTGAAGAGCCTTTCGTGATGGTGGCTGAGAACATCCTAGGACAGCCCAAGCGCTACAAAGGTTCTC
CATAGATGCTCGGATGCACTGGCCAAGGCTCTGGGCTTAAATATGAGATTTACCAAGCCCTGATGGC



```

AGGTACGGTCACCAGCTCCATAACACCTCCTGGAACGGGATGATCGGGGAGCTCATCAGCAAGAGAGCAG
ACTTGGCCATCTCTGCCATCACCATCACCCAGAGAGGGAGAGCGTTGTGGACTTCAGCAAGCGGTACAT
GGACTATTCAGTGGGGATTCTAATTAAGAAGCCCGAGGAGAAAATCAGCATCTTCTCCCTCTTTGCTCCA
TTTGATTTTCGCTGTGTGGGCTGCATTGCAGCAGCCATCCCTGTGGTTGGTGTGCTGATATTTGTGTTGA
ACAGGATACAGGCTGTGAGGGCTCAGAGTGTGCCAGCCAGGCCGTGACGTTCTGCCACTCTGCACAG
CGCCATCTGGATTGTCTATGGAGCCTTCGTACAGCAAGGTGGCGAATCTCCGTGAACCCATGCCCATG
CGCATCGTGTAGGGCAGCTGGTGGCTCTTCAGCTCATTGTGTGCTCCTCTACACAGCCAACTTGTG
CCTTCTCACAGTGTCCAGGATGGACAACCCATAAGGACTTTCAGGACCTGTCCAACAAGTGGAAAT
GTCTTATGGCACTGTCCGGGATTCTGCTGTATATGAGTACTTCCGAGCCAAGGGACCAACCCCTGGAG
CAGGACAGCACGTTTGTGAACTCTGGCGGACCATCAGCAAGAACGGAGGGGCTGACAACTGCGTGTCCA
GTCCTTCAGAAGGCATCAGGAAGGCAAAGAAGGGGAACTACGCCTTCTGTGGGATGTGGCCGTGGTGA
ATACGCAGCCCTGACGGATGACGACTGCTCGGTGACTGTCATCGGCAACAGCATCAGCAGCAAGGGTTAC
GGGATTGCCCTGCAGCATGGCAGCCCTACAGGGACCTTCTCCAGAGGATCTGGAGCTGCAGGACA
CAGGGGACCTGGATGTGCTGAAGCAGAAGTGGTGGCCGCATGGCCGCTGTGACCTCACCAGCCATGC
CAGCGCCAGGCCGACGGCAAATCCCTCAAGCTGCACAGCTTCGCCGGGGTCTTCTGCATCTGGCCATT
GGCCTGCTCCTGGCCTGCCTGGTGGCTGCCCTGGAGTTGTGGTGGAAACAGCAACCCGGTGCCACCAGGAGA
CCCCAAGGAGGACAAAGAAGTGAACCTGGAGCAGGTCCACCGGCGCATGAACAGCCTCATGGATGAAGA
CATTGCTCACAAGCAGATTTCCCCAGCGTCGATTGAGCTCTCGGCCCTGGAGATGGGGGGCTGGCTCCC
ACCCAGACCTTGGAGCCGACACGGGAGTACCAGAACACCCAGCTCTCGGTGAGCAGCTTTCTGCCAGAGC
AGAGCAGCCATGGCACCAGCCGACACTCTCATCAGGGCCAGCAGCAACCTGCCGCTGCCGCTGAGCAG
CTCGGCGACCATGCCCTCCATGCAGTGAACACAGGTCAACCAACGGGGGGCTGTTCCGGCAGAGCCCG
GTGAAGACCCCATCCCATGTCCTTCCAGCCCGTGCCTGGAGGGCTCCTCCAGAGGCTCTGGACACCT
CCCACGGGACCTCCATC
    
```

ACGCGTACGCGGCCGCTCGAG - GFP Tag - GTTTAA

Protein Sequence:

>RG224397 representing NM_017551
 Red=Cloning site Green=Tags(s)

```

MEALTLWLLPWICQCVSVRADSIHIGAI FEENA KDDRVFQLAVSDL SLNDDILQSEKITYSIKIVIEAN
NPFQAVQAEADLMTQGILALVTSTGCASANALQSLTDAMHIPHLFVQRNPGGSPRTACHLNPSPDGEAYT
LASRPPVRLNDVMLRLVTELRWQKVMFYDSEYDIRGLQSF LDQASRLGLDVSLQKVDKNI SHVFTSLFT
TMKTEELNRYRDLRRAILLSPQGAHSF INEAVETNLASKDSHWVFNEEISDPEILD LVHSALGRMTV
VRQIFPSAKDNQKCTRNHRISLLCDPQEGYLQMLQISNL YLYDSVLMANAFHRKLEDRKWHSMASLN
CIRKSTKPWNGGRSMLDIKKGHITGLTGVMFREDSSNPYVQFEILGTTYSETFGKDMRKLATWDESEK
LNGSLQERPMGSRLQGLTLKVVTVLEEFVMAENILGQPKRYKGF SIDVLDALAKALGFKYEIYQAPDG
RYGHLHNTSWNGMIGELISKRADLAISAITITPERESVVD FSKRYMDYSVGILIKKPEEKISIFSLFAP
FDFAVWACIAAAIPVVGVLIFVLNRIQAVRAQSA AQRPSASATLHSAIWIYVYGA FVQGGESSVNSMAM
RIVMGSWWLFTLIVCSSYANLAAFLTVSRMDNPIRTFQDLSKQVEMSYGTVRDSAVYEFYFRAGKTNPLE
QDSTFAELWRTISKNGGADNCVSSPSEGIRKAKKGN YAFLDVAVVEYAALTD DDCSVTVIGNSISSKGY
GIALQHGSYPYRDLFSQRILELQDTGDLV LKQKWWPHMGRCDL TSHASAQADGKSLKLHSFAGVFCILAI
GLLLACLVAALELWVNSNRCHQETPKEDKEVNLEQV HRRMNSLMDEDIAHKQISPASIELSALEMGLAP
TQTLEPTREYQNTQLSVSTFLPEQSSHGTSRTLSSG PSSLPLPLSSSATMPSMQCKHRSPNGGLFRQSP
VKTPIPMSFQVPVGGVLPEALDTSHGTSI
    
```

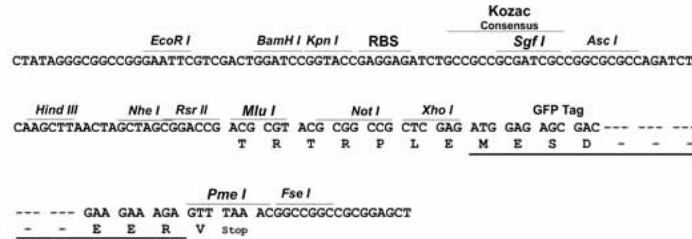
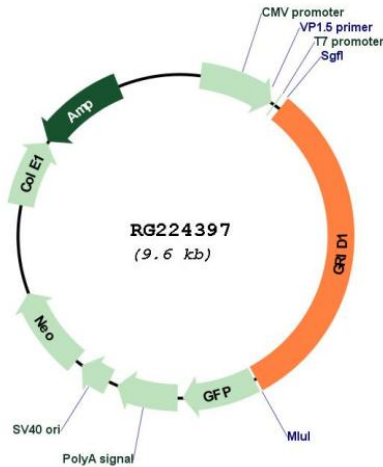
TRTRPLE - GFP Tag - V

Restriction Sites:

Sgfl-MluI

Cloning Scheme:

Cloning sites used for ORF Shutting:


Plasmid Map:

ACCN: NM_017551

ORF Size: 3027 bp

OTI Disclaimer: The molecular sequence of this clone aligns with the gene accession number as a point of reference only. However, individual transcript sequences of the same gene can differ through naturally occurring variations (e.g. polymorphisms), each with its own valid existence. This clone is substantially in agreement with the reference, but a complete review of all prevailing variants is recommended prior to use. [More info](#)

OTI Annotation:	This clone was engineered to express the complete ORF with an expression tag. Expression varies depending on the nature of the gene.
Components:	The ORF clone is ion-exchange column purified and shipped in a 2D barcoded Matrix tube containing 10ug of transfection-ready, dried plasmid DNA (reconstitute with 100 ul of water).
Reconstitution Method:	<ol style="list-style-type: none">1. Centrifuge at 5,000xg for 5min.2. Carefully open the tube and add 100ul of sterile water to dissolve the DNA.3. Close the tube and incubate for 10 minutes at room temperature.4. Briefly vortex the tube and then do a quick spin (less than 5000xg) to concentrate the liquid at the bottom.5. Store the suspended plasmid at -20°C. The DNA is stable for at least one year from date of shipping when stored at -20°C.
RefSeq:	<u>NM_017551.3</u>
RefSeq Size:	5849 bp
RefSeq ORF:	3030 bp
Locus ID:	2894
UniProt ID:	<u>Q9ULK0</u>
Cytogenetics:	10q23.1-q23.2
Protein Families:	Druggable Genome, Ion Channels: Glutamate Receptors, Transmembrane
Protein Pathways:	Neuroactive ligand-receptor interaction
Gene Summary:	This gene encodes a subunit of glutamate receptor channels. These channels mediate most of the fast excitatory synaptic transmission in the central nervous system and play key roles in synaptic plasticity.[provided by RefSeq, Jan 2009]