

Product datasheet for **RG224379**

TCL6 (NM_012468) Human Tagged ORF Clone

Product data:

Product Type: Expression Plasmids
Product Name: TCL6 (NM_012468) Human Tagged ORF Clone
Tag: TurboGFP
Symbol: TCL6
Synonyms: OTTHUMP00000195767; T-cell leukemia/lymphoma 6; T-cell leukemia/lymphoma 6 ORF72; T-cell leukemia/lymphoma 6 ORF141; TCL1-neighboring gene 1; TCL1-neighboring gene 2; TCL6e1; TCL6f1; TCL6f2; TNG1; TNG2

Mammalian Cell Selection: Neomycin

Vector: pCMV6-AC-GFP (PS100010)

E. coli Selection: Ampicillin (100 ug/mL)

ORF Nucleotide Sequence: >RG224379 representing NM_012468
Red=Cloning site Blue=ORF Green=Tags(s)

TTTTGTAATACGACTCACTATAGGGCGGCCGGAATTCGTCGACTGGATCCGGTACCGAGGAGATCTGCC
GCC**CGGATCGCC**

ATGGAGCCAGAGTGACACAGAGGAAGAGGCCCTGGATGGATGCATGGGAAGATCACGGGAATTACAA
GTGACATCCTGAAGTATGATCACAAATGTTTCAAATTAAGCCTTCTGCTAAGTTTCCAGAGGTGTGTGG
CTCGGACGAAGTGTTCAGACCCTGATCTACTGCATGCCTGCCTGTTGCTGGTTCTTTCAGCAGTCC
ATTGACCAATGCTGTCTACAGCTTGAGAGCCTCTGCAGGCCAGGGCTGCTCTGTGCACATCCTACGTTAC
TATTCAAAGTGCACAGCAGCATGAAAAACAGGCCCTTCTTTCTCTCATTACACATATGTGAAGAAGAC
ACAGCAAGTGAGAAAACGTGACCGAAAGCCACGCGGACAGGTGGCCGAGGGCCAAACCAACTCCGTG
ATG

ACGCGTACGCGGCCGCTCGAG - GFP Tag - GTTTAA

Protein Sequence: >RG224379 representing NM_012468
Red=Cloning site Green=Tags(s)

MEPRVTQRKRPLDGC MGKITGITS DILKYD HKCFKLSLPAKFPEVCGSDEVFPDPDLLHVL PVAGSLQQS
IDQCCLQLES LCRPGLLCAHPTLLFKLHSSMKNRPF FSLIYTYVKK TQVRKRDRKPRGQVAAGNP TSV
M

TRTRPLE - GFP Tag - V

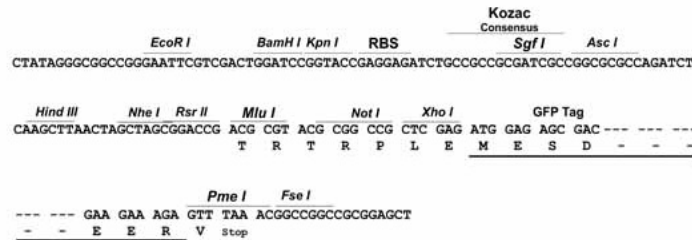
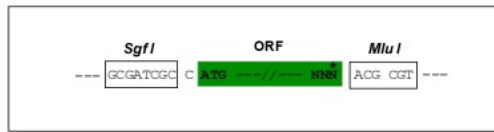


[View online »](#)

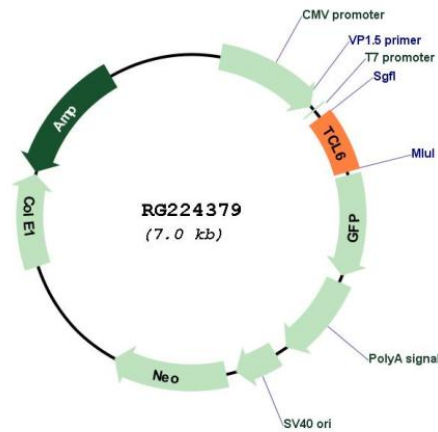
Restriction Sites: SgfI-MluI

Cloning Scheme:

Cloning sites used for ORF Shutting:



Plasmid Map:



ACCN: NM_012468

ORF Size: 423 bp

OTI Disclaimer: The molecular sequence of this clone aligns with the gene accession number as a point of reference only. However, individual transcript sequences of the same gene can differ through naturally occurring variations (e.g. polymorphisms), each with its own valid existence. This clone is substantially in agreement with the reference, but a complete review of all prevailing variants is recommended prior to use. [More info](#)

OTI Annotation: This clone was engineered to express the complete ORF with an expression tag. Expression varies depending on the nature of the gene.

Components:	The ORF clone is ion-exchange column purified and shipped in a 2D barcoded Matrix tube containing 10ug of transfection-ready, dried plasmid DNA (reconstitute with 100 ul of water).
Reconstitution Method:	<ol style="list-style-type: none">1. Centrifuge at 5,000xg for 5min.2. Carefully open the tube and add 100ul of sterile water to dissolve the DNA.3. Close the tube and incubate for 10 minutes at room temperature.4. Briefly vortex the tube and then do a quick spin (less than 5000xg) to concentrate the liquid at the bottom.5. Store the suspended plasmid at -20°C. The DNA is stable for at least one year from date of shipping when stored at -20°C.
RefSeq:	<u>NM_012468.4</u>
RefSeq Size:	3807 bp
RefSeq ORF:	425 bp
Locus ID:	27004
Cytogenetics:	14q32.13