

## Product datasheet for **RG224363**

### Aprataxin (APTX) (NM\_175071) Human Tagged ORF Clone

#### Product data:

Product Type:	Expression Plasmids
Product Name:	Aprataxin (APTX) (NM_175071) Human Tagged ORF Clone
Tag:	TurboGFP
Symbol:	APTX
Synonyms:	AOA; AOA1; aprataxin; ataxia 1, early onset with hypoalbuminemia; AXA1; EAOH; EOAHA; FHA-HIT; FLJ20157; MGC1072; OTTHUMP00000021188
Mammalian Cell Selection:	Neomycin
Vector:	pCMV6-AC-GFP (PS100010)
E. coli Selection:	Ampicillin (100 ug/mL)
ORF Nucleotide Sequence:	>RG224363 representing NM_175071 Red=Cloning site Blue=ORF Green=Tags(s)

TTTTGTAATACGACTCACTATAGGGCGGCCGGAATTCGTCGACTGGATCCGGTACCGAGGAGATCTGCC  
GCC**CGATCGCC**

ATGCAGGACCCAAAATGCAGGTTTACAAAGATGAGCAGGTGGTGGTGATAAAGGATAAATACCCAAAGG  
CCC GTTACCATTGGCTGGTCTTACCGTGGACCTCCATTTCCAGTCTGAAGGCTGTGGCCAGGGAACACCT  
TGAACCTCTTAAGCATATGCACACTGTGGGGGAAAAGGTATTGTAGATTTTGCTGGGTCCAGCAAACCT  
CGCTTCCGATTGGGCTACCACGCCATTCGAGTATGAGCCATGTACATCTTCATGTGATCAGCCAGGATT  
TTGATTCTCCTTGCCTTAAAAACAAAAACATTGGAATTCCTTCAATACAGAATACTTCTAGAAATCACA  
AGCTGTGATCGAGATGGTACAAGAGGCTGGTAGAGTAAGTGTCCGAGATGGGATGCCTGAGCTCTTGAAG  
CTGCCCTTCGTTGTCATGAGTGCCAGCAGCTGCTGCCTCCATTCTCAGCTGAAAGAATCTCAGGA  
AGCACTGGACACAG

**ACGCGT**ACGCGGCCGCTCGAG - GFP Tag - GTTTAA

Protein Sequence:	>RG224363 representing NM_175071 Red=Cloning site Green=Tags(s)
	MQDPKMVYKDEQVVVVKDKYPKARYHWLVLPWTSISSLKAVAREHLELLKHMHTVGEKVIIVDFAGSSKL RFRLGYHAIPSMHVHLHVISQDFDPSCLKNKKHWNFSNTEYFLESQAVIEMVQEAQRVTVRDGMPELLK LPLRCHQCQQLLPSIPQLKEHLRKHWTQ
	<b>TRTRPLE</b> - GFP Tag - V

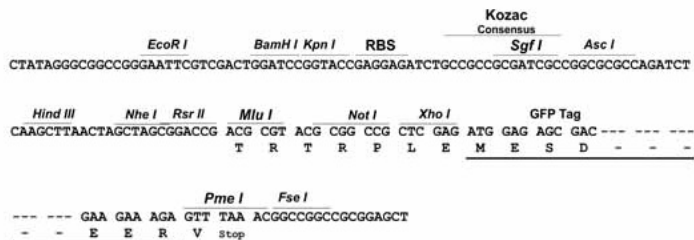
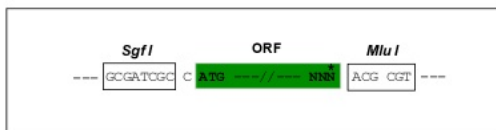


[View online »](#)

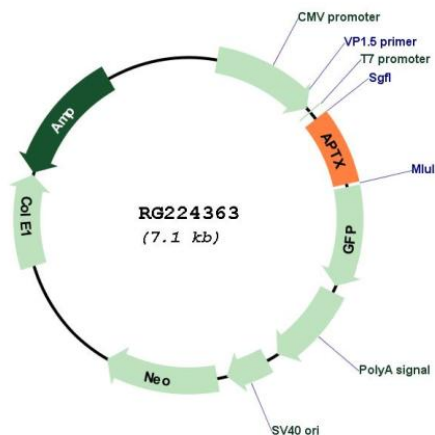
Restriction Sites: SgfI-MluI

Cloning Scheme:

Cloning sites used for ORF Shutting:



Plasmid Map:



ACCN: NM\_175071

ORF Size: 504 bp

OTI Disclaimer: The molecular sequence of this clone aligns with the gene accession number as a point of reference only. However, individual transcript sequences of the same gene can differ through naturally occurring variations (e.g. polymorphisms), each with its own valid existence. This clone is substantially in agreement with the reference, but a complete review of all prevailing variants is recommended prior to use. [More info](#)

OTI Annotation: This clone was engineered to express the complete ORF with an expression tag. Expression varies depending on the nature of the gene.

<b>Components:</b>	The ORF clone is ion-exchange column purified and shipped in a 2D barcoded Matrix tube containing 10ug of transfection-ready, dried plasmid DNA (reconstitute with 100 ul of water).
<b>Reconstitution Method:</b>	<ol style="list-style-type: none"><li>1. Centrifuge at 5,000xg for 5min.</li><li>2. Carefully open the tube and add 100ul of sterile water to dissolve the DNA.</li><li>3. Close the tube and incubate for 10 minutes at room temperature.</li><li>4. Briefly vortex the tube and then do a quick spin (less than 5000xg) to concentrate the liquid at the bottom.</li><li>5. Store the suspended plasmid at -20°C. The DNA is stable for at least one year from date of shipping when stored at -20°C.</li></ol>
<b>RefSeq:</b>	<u>NM_175071.1, NP_778241.1</u>
<b>RefSeq Size:</b>	1836 bp
<b>RefSeq ORF:</b>	506 bp
<b>Locus ID:</b>	54840
<b>Cytogenetics:</b>	9p21.1
<b>Protein Families:</b>	Druggable Genome
<b>Gene Summary:</b>	This gene encodes a member of the histidine triad (HIT) superfamily. The encoded protein may play a role in single-stranded DNA repair through its nucleotide-binding activity and its diadenosine polyphosphate hydrolase activity. Mutations in this gene have been associated with ataxia-ocular apraxia. Alternatively spliced transcript variants have been identified for this gene.[provided by RefSeq, Aug 2010]