

Product datasheet for **RG224335**

C11orf49 (NM_001003678) Human Tagged ORF Clone

Product data:

Product Type:	Expression Plasmids
Product Name:	C11orf49 (NM_001003678) Human Tagged ORF Clone
Tag:	TurboGFP
Symbol:	C11orf49
Mammalian Cell Selection:	Neomycin
Vector:	pCMV6-AC-GFP (PS100010)
E. coli Selection:	Ampicillin (100 ug/mL)
ORF Nucleotide Sequence:	>RG224335 representing NM_001003678 Red=Cloning site Blue=ORF Green=Tags(s)

TTTTGTAATACGACTCACTATAGGGCGGCCGGAATTCGTCGACTGGATCCGGTACCGAGGAGATCTGCC
GCC**CGATCGCC**

ATGCTGAGTCCGGAGCGCCTAGCCCTACCGACTACGAGTATCTGGCTCAGCGACATGTCCTCACCTACA
TGGAGGATGCAGTGTGCCAGCTGCTAGAAAACAGGAAGATATTAGCCAATATGGAATTGCCAGGTTCTT
CACTGAATATTTAACAGTGTATGCCAGGGAACACACATTCTCTTTCGAGAATTCAGCTTCGTCCAAGCC
ACCCCCACAATAGGGTATCATTTTTACGGCCTTCTGGAGATGCTTCCGAACTGTGGCAAAAATGGCG
ATTTGCTGACCATGAAAGAATATCACTGTTTGTGCAATTACTGTGCTGCTGATTTCCCGTGGAGCTCAC
TCAGAAAGCAGCCAGGATTGTGCTCATGGACGATGCCATGGACTGCTTGATGTCTTTTTTCAGATTTCTC
TTTGCCTTCCAGATCCAGTTTTACTACTCAGAATTCCTGGACAGTGTGGCTGCCATCTATGAGGACCTGC
TGTGAGGCAAGAACCCCAACACAGTATTGTGCCGACGTCGTCCAGTGGGACGACCCGCAACGACCTGC
CTTGGGCGGGCCGGCACGCTGGAGGGCGTGGAGGCGTGTCTACCAAGTGTCTGAAAACTGTGT
GATCGGCACAAGTACAGCTGCCACCCAGCACTTGTCAAAGAGGCCCTCAGCAATGTTGAGAGACTGA
CCTTCTATGGATTCCTCATGGCTCTCTCAAAGCACCGTGAATCAACCAAGCCCTCGGAGCTTTGCCTGA
CAAGGGGATCTGATGCACGACCCAGCAATGGATGAAGAGCTGGAACGGCTGGTGGTGAAGCTG
CACCGGACCTCACGGCAGCACAGAGCCAAGGAGCCAGGGCCTTTGGCTTTCAGAGAAGAGAGAAGCAGG
AGGCCCTGGAGAGAGTGTCTCAGCTTCGGTACCGACGCCCTACCATTACCGGTGGGAGCCAGAGAG

ACGCGTACGCGGCCGCTCGAG - GFP Tag - GTTTAA



[View online »](#)

Protein Sequence: >RG224335 representing NM_001003678
 Red=Cloning site Green=Tags(s)

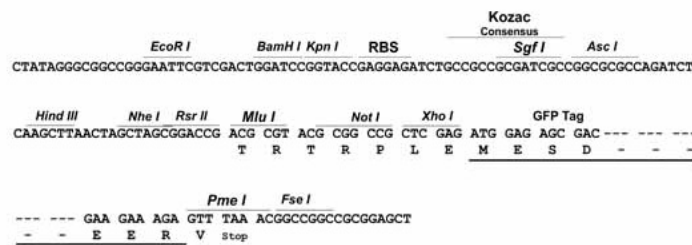
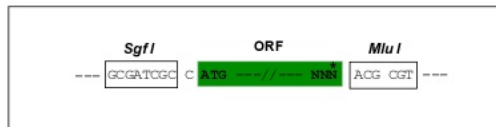
MLSPERLALPDYEYLAQRHVLT YMEDAVCQLENREDISQYGIARFFTEYFN SVCQGTHILFREFSFVQA
 TPHNRVSFLRAFWRFCRTV GKNGDLLTMKEYHCLLQLLCPDFPLELTQKAARIVLMDDAMDCLMSFSDFL
 FAFQIQFYSEFLDSVAAIYEDLLSGKNPNTVIVPTSSSQHRQRPALGGAGTLEGVEASLFYQCLENLC
 DRHKYSCPPPALVKEALSNVQRLTFYGFMLALSKHRGINQALGALPDKGDLMHPAMDEELERLVVRSKL
 HRTSRQHRAKEPGAFGFQRREKQEALERVSSASVPTPYHYRWEPRE

TRTRPLE - GFP Tag - V

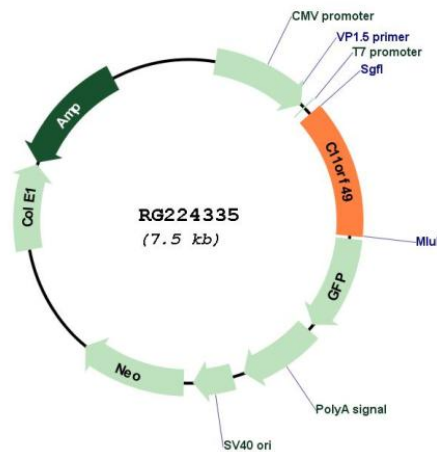
Restriction Sites: SgfI-MluI

Cloning Scheme:

Cloning sites used for ORF Shutting:



Plasmid Map:



ACCN: NM_001003678

ORF Size: 978 bp

OTI Disclaimer:	The molecular sequence of this clone aligns with the gene accession number as a point of reference only. However, individual transcript sequences of the same gene can differ through naturally occurring variations (e.g. polymorphisms), each with its own valid existence. This clone is substantially in agreement with the reference, but a complete review of all prevailing variants is recommended prior to use. More info
OTI Annotation:	This clone was engineered to express the complete ORF with an expression tag. Expression varies depending on the nature of the gene.
Components:	The ORF clone is ion-exchange column purified and shipped in a 2D barcoded Matrix tube containing 10ug of transfection-ready, dried plasmid DNA (reconstitute with 100 ul of water).
Reconstitution Method:	<ol style="list-style-type: none"> 1. Centrifuge at 5,000xg for 5min. 2. Carefully open the tube and add 100ul of sterile water to dissolve the DNA. 3. Close the tube and incubate for 10 minutes at room temperature. 4. Briefly vortex the tube and then do a quick spin (less than 5000xg) to concentrate the liquid at the bottom. 5. Store the suspended plasmid at -20°C. The DNA is stable for at least one year from date of shipping when stored at -20°C.
RefSeq:	NM_001003678.3
RefSeq Size:	1231 bp
RefSeq ORF:	981 bp
Locus ID:	79096
UniProt ID:	Q9H6J7
Cytogenetics:	11p11.2