

Product datasheet for **RG224326**

Dynamin 3 (DNM3) (NM_015569) Human Tagged ORF Clone

Product data:

Product Type:	Expression Plasmids
Product Name:	Dynamin 3 (DNM3) (NM_015569) Human Tagged ORF Clone
Tag:	TurboGFP
Symbol:	Dynamin 3
Synonyms:	Dyna III
Mammalian Cell Selection:	Neomycin
Vector:	pCMV6-AC-GFP (PS100010)
E. coli Selection:	Ampicillin (100 ug/mL)



[View online »](#)

ORF Nucleotide Sequence:

>RG224326 representing NM_015569
 Red=Cloning site Blue=ORF Green=Tags(s)

TTTTGTAATACGACTCACTATAGGGCGGCCGGGAATTCGTCGACTGGATCCGGTACCGAGGAGATCTGCC
 GCC**GCGATCGCC**

ATGGGGAACCGGGAGATGGAGGAGCTGATCCCCTGGTGAACCGTCTGCAGGACGCGTTTTTCGGCGCTGG
 GACAGAGCTGCCTGCTGGAGCTGCCGAGATCGCCGTGGTGGGCGGCCAGAGCGCCGCAAGAGCTCGGT
 GCTCGAGAACTTCGTGGGACGGGACTTTCTCCCTCGAGGGTGGGCATTGTAACAAGACGACCTCTGTG
 CTGCAGCTTGTACTTCTAAAGCAGAATATGCCGAGTTTCTACATTGCAAAGGAAAGAAATTTACAGATT
 TTGATGAAGTTCGCCTTGAGATTGAAGCAGAAACAGATCGCGTACTGGAATGAATAAAGGCATTTCTC
 CATACCCATTAATTTACGAGTCTATTTCCACACGCTGTTAAATCTAACCTTATTGATCTACCTGGAATA
 ACTAAAGTGCCTGTGGGAGATCAGCCACCAGATATCGAGTATCAGATCAGAGAAATGATTATGCAGTTCA
 TCACGAGGGAGAACTGTCTGATTTTAGCTGTTACTCCAGCCAACACTGATCTTGCAAACTCAGATGCGCT
 GAAGCTAGCTAAAGAAGTTGATCCTCAAGTCTGAGAACCATTGGAGTTATCACCAAACCTGGACCTTATG
 GATGAAGGAACGGATGCCAGGGATGTTCTAGAGAACAAACTGTTGCCTCTTCGCAGGGGTTACGTGGGGG
 TGGTAAACAGAAGCCAGAAGGACATAGATGGGAAGAAGGACATAAAGGCAGCCATGCTGGCAGAGAGGAA
 GTTTTTCTTTCCACCCGGCTTACAGACATATCGCTGACCGAATGGGAACCCACACCTGCAGAAGGTC
 CTTAATCAGCAACTTACCAACCACATTCGGGATACCTACCAAACCTCAGGAACAAACTACAGGGACAGT
 TGCTCTCCATAGAACATGAAGTAGAAGCCTACAAAAATTTCAAACCAGAAGACCAACAAGGAGACCAA
 AGCATTGCTGCAGATGGTTCAGCAATTTGCTGTGGACTTTGAGAAGAGAATTGAAGGGTCAGGGGATCAA
 GTAGATACCCTGGAACCTCAGGTGGTGTAAAATCAATCGTATTTTTCATGAACGCTTTCTTTTGAGA
 TAGTAAAGATGGAGTTCAATGAGAAAGAATTGCGAAGAGAAATTAAGCTATGCAATCAAAAACATACATGG
 TATCAGGACAGGGTTGTTTACTCCAGACATGGCATTGGAAGCGATAGTCAAGAAACAGATTGTAAGATTG
 AAAGGGCCTTCTTGAAGAGTGTGGATCTGGTAATACAAGAATTAATCAACACTGTGAAGAAGTGTACCA
 AAAAAGTGGCAAACCTTCCCAGACTCTGCGAGGAAACGAAAGGATTGTTGCTAACCCACATTCTGAGCG
 AGAAGGGAAAGACAAGGACCAGGTATTGCTATTGATTGACATTCAAGTCTTTACATCAACACCAACCAT
 GAAGACTTCATTGGCTTCGCAAATGCTCAGCAGAGGAGCAGTCAAGTTTACAAGAAAACACAGTTGGAA
 ATCAGGTGATTCGCAAGGGTGGCTCACCATCAGCAACATTGGCATTGAAAGGCGGCTCGAAGGGATA
 CTGTTTCGTCCTTACTGCGGAAAGCTTGTCTGGTATAAAGATGATGAGGAAAAAGAAAAGTACATG
 CTTCCCTTGGACAACCTGAAAGTTCGGGATGTGAAAAGAGCTTTATGTCTAGCAAGCACATCTTTGCAC
 TCTTTAATACAGAGCAAAGGAATGTATACAAGACTATCGCTTCCCTTGGCTGGCATGTGATTCCCAGGA
 GGATGTCGACAGCTGGAAGGCATCTCTACTAAGAGCTGGGGTCTATCCTGACAAATCTGTAGGGAACAAC
 AAAGTGAATAATGATGAGAATGGACAAGCAGAAAACCTTTTCCATGGACCCACAATTGGAGAGGCAAGTGG
 AGACCATTCGCAACCTCGTAGACTCCTACATGTCCATTATCAACAAATGTATCCGAGATCTAATTCAAA
 AACAATAATGCACCTTATGATCAATAACGTTAAAGATTTCAATAATTCGAGCTCCTAGCACAGTTGTAT
 TCTTCAGAGGACCAAAAATACCCTGATGGAGGAATCTGCTGAGCAGGCTCAGCGCCGGGATGAGATGCTTC
 GAATGTATCAAGCACTGAAAGAAGCCCTTGGGATAATTTGGGACATCAGCACAGCCACCGTGTCCACTCC
 GGCACCCCTCCAGTGGATGACTCCTGGATACAGCACTCTGCAGGTCACCTCCTCAAGCCCCACAACC
 CAAAGGAGGCCAACACTAAGTGCTCCCCTCGAAGGCCACATCCGGCCGAGGACCAGTCTCTGCCATTC
 CCTCTCTGGCCCCACTCTGGGCTCCTCCAGTCCCATTCCGTCCAGGCCATTACCTCTTTCCCCAG
 CAGCAGTACTCCTTCGGAGCCCCTCCACAAGTTCATCTAGGCCTACGAGGGCCCCGCCAGTGTCCCA
 AGCCGGAGACCACCCCATCACCAACTCGTCCCCTATAATCCGCCACTAGAATCTCCTGTTAGAC

AG**CGGACCG**ACGCGTACGCGGCCGCTCGAG - GFP Tag - GTTTAA

Protein Sequence: >RG224326 representing NM_015569
 Red=Cloning site Green=Tags(s)

```

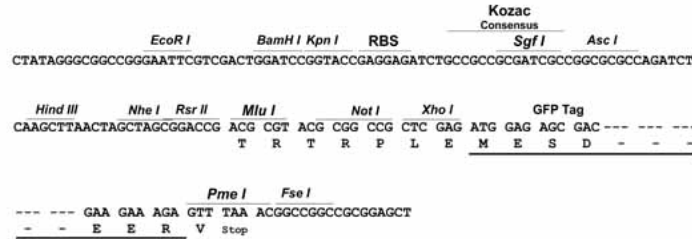
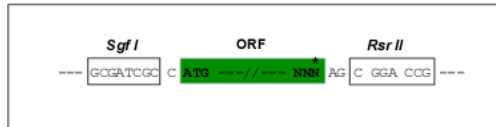
MGNREMEELIPLVNRLQDAFSALGQSCLLELPQIAVVGGSAGKSSVLENFVGRDFLPRGSGIVTRRPLV
LQLVTSKAEYAEFLHCKGKKFTDFDEVRLIEAETDRVTGMNKGISSIPINLRVYSPHVLNLTIDLPGI
TKVPVGDQPPDIEYQIREMIMQFITRENCLILAVTPANTDLANSALKLAKEVDPQGLRTIGVITKLDLM
DEGTDARDVLENKLLPLRRGYGVVNRSQKDIDGKKDIKAAMLAERKFFLSHPAYRHIADRMGTPHLQKV
LNQQLTNHIRDTLPNFRNKLQGQLLSIEHEVEAYKNFKPEDPTRKTKALLQMVQQFAVDFEKRIEGSGDQ
VDTLELSGGAKINRIFHERFPFEIVKMEFNEKELRREISYAIKNIHGIRTGLFTPDMAFEAIVKKQIVKL
KGPVSLKSVDLVIQELINTVKKCTKLANFPRLCEETERIVANHIREREGTKDQVLLLDIQVSYINTNH
EDFIGFANAQQRSSQVHKTTVGNQVIRKGWLTISNIGIMKGGSKGYWVFLTAESLSWYKDDEEKEKKYM
LPLDNLKVRDVEKSFMSKHFALFNTEQRNVYKDYRFLELACDSQEDVDSWKASLLRAGVYDPKSVGNN
KAENDENQAENFSMDPQLERQVETIRNLVDSYMSIINKCIRDLIPKTIIMHLMINNVKDFINSELLAQLY
SSEDQNTLMEESAQAQRREMLRMYQALKEALGIIGDISTATVSTPAPPVDDSWIQHSRRSPPPSPTT
QRRPTLSAPLARPTSGRGPAPAIKSPGPHSGAPPVFRPGPLPPFPSSSDSFGAPPQVSRPTRAPPSVP
SRRPPSPTRPTIIRPLESSLLD
  
```

SGPTRRRLE - GFP Tag - V

Restriction Sites: Sgfl-RsrII

Cloning Scheme:

Cloning sites used for ORF Shuttling:


ACCN: NM_015569

ORF Size: 2589 bp

OTI Disclaimer: The molecular sequence of this clone aligns with the gene accession number as a point of reference only. However, individual transcript sequences of the same gene can differ through naturally occurring variations (e.g. polymorphisms), each with its own valid existence. This clone is substantially in agreement with the reference, but a complete review of all prevailing variants is recommended prior to use. [More info](#)
OTI Annotation: This clone was engineered to express the complete ORF with an expression tag. Expression varies depending on the nature of the gene.

Components: The ORF clone is ion-exchange column purified and shipped in a 2D barcoded Matrix tube containing 10ug of transfection-ready, dried plasmid DNA (reconstitute with 100 ul of water).

Reconstitution Method:

1. Centrifuge at 5,000xg for 5min.
2. Carefully open the tube and add 100ul of sterile water to dissolve the DNA.
3. Close the tube and incubate for 10 minutes at room temperature.
4. Briefly vortex the tube and then do a quick spin (less than 5000xg) to concentrate the liquid at the bottom.
5. Store the suspended plasmid at -20°C. The DNA is stable for at least one year from date of shipping when stored at -20°C.

RefSeq: [NM_015569.5](#)

RefSeq Size: 7644 bp

RefSeq ORF: 2592 bp

Locus ID: 26052

UniProt ID: [Q9UQ16](#)

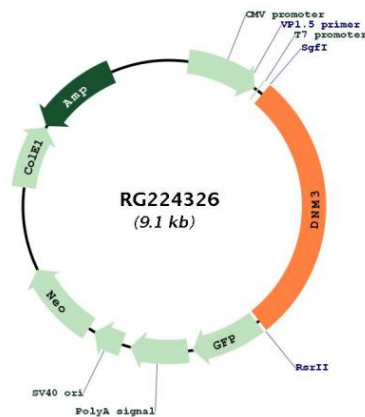
Cytogenetics: 1q24.3

Domains: dynamin_2, dynamin, PH, GED

Protein Pathways: Endocytosis, Fc gamma R-mediated phagocytosis

Gene Summary: This gene encodes a member of a family of guanosine triphosphate (GTP)-binding proteins that associate with microtubules and are involved in vesicular transport. The encoded protein functions in the development of megakaryocytes. Alternative splicing results in multiple transcript variants. [provided by RefSeq, May 2013]

Product images:



Circular map for RG224326