

Product datasheet for **RG224324**

TAF172 (BTAF1) (NM_003972) Human Tagged ORF Clone

Product data:

Product Type:	Expression Plasmids
Product Name:	TAF172 (BTAF1) (NM_003972) Human Tagged ORF Clone
Tag:	TurboGFP
Symbol:	BTAF1
Synonyms:	MOT1; TAF(II)170; TAF172; TAFII170
Mammalian Cell Selection:	Neomycin
Vector:	pCMV6-AC-GFP (PS100010)
E. coli Selection:	Ampicillin (100 ug/mL)
ORF Nucleotide Sequence:	>RG224324 representing NM_003972 Red=Cloning site Blue=ORF Green=Tags(s)

TTTTGTAATACGACTCACTATAGGGCGGCCGGAATTCGTCGACTGGATCCGGTACCGAGGAGATCTGCC
GCC**CGATCGCC**

ATGGCGGTCTCCAGGCTAGATCGCCTTTTTATTTACTGGATACTGGCACTACTCCTGTTACAAGAAAAG
CTGCTGCACAGCAACTTGGAGAAGTGGTGAAGCTTCATCCCCATGAACTAAATAATCTCCTGTCTAAAGT
GTTGATATATTTAAGGAGTGCAAATGGGATACCCGGATTGCAGCAGGACAAGCTGTTGAAGCTATAGTG
AAAAATGTACCTGAGTGGAAATCCAGTGCCGAGAACCAGACAAGAACCTACTTCCGAAAGTTCTATGGAAG
ATTCACCTACTACAGAGCGATTGAATTTGACAGATTTGATATATGTAGATTGTTACAACATGGTGCATC
ACTCCTGGGATCTGCTGGTGCCGAATTTGAAGTCCAAGATGAAAAATCAGGTGAAGTGGATCCTAAAGAG
AGGATAGCACGCCAACGAAAATTATTACAGAAGAACTTGGCCTTAATATGGGAGAAGCAATTGGAAATGA
GTACTGAAGAACTTTTCAATGATGAGGATTTGGATTATACCCCAACTTCAGCATCCTTTGTTAAACAAACA
ACCTACTCTTCAGGCAGCTGAATTGATTGACTCAGAGTTTCGAGCAGGAATGAGCAATAGACAAAAGAAC
AAAGCTAAAAGAATGGCCAAGTTATTTGCAAAACAGAGATCCAGGGATGCAGTGGAACTAATGAGAAGA
GCAATGATAGCACTGATGGGAGCCAGAAGAAAAGAGACGGAAAATAGCAAAATGTTGTTATTAATCAGTC
TGCAAAATGATCCAAAGTCTTGATTGATAATATCCAGACAGCTCTTCCCTAATTGAAGAGACAAATGAA
TGGCCTTTGAAAAGCTTTTGTGAAGAACTTTGCAATGACCTTTTTAATCCCTCCTGGGAGTTTCGACATG
GTGCAGGCACTGGACTTAGGGAAATCTTAAAGCTCATGGGAAAAGTGGTGGTAAAATGGGTGACAGCAC
TTTAGAAGAGATGATTCAGCAGCATCAAGAGTGGTTGGAAGACTTGGTTATTAGACTCCTTTGTGTTTTT
GCATTAGACAGATTTGGAGACTTTGTTTCTGATGAAGTTGTGGCACCAGTTCTGTAAGACTTGTGCTCAAA
CATTAGGTGTGGTTTTAAACACATGAACGAAACAGGAGTTTCAAGACTGTGGATGTGCTGCTAAAATT
ACTTACACAAGAACAATGGGAAGTTAGACATGGTGGTCTGCTGGGAATAAAAATGCTTTGGCAGTCCGT
CAGGATGTAATTAATACTTTATTGCCTAAAGTTTTAACTAGAATAAATGAAGGACTCCAGGATCTTGATG
ATGATGCAGAGCTGTTGCTGCAGCATCATTAGTGCCTGTAGTAGAAAGCCTTGCTATCTTCAGACACA
AAAGGTGCCCTTCATTATAAATACATTGTGGGATGCTCTCTGGAATTAGATGATCTAACAGCTTCAACA



[View online »](#)

AATAGTATTATGACTCTCCTTTCATCCTTGTTAACTTACCCTCAGGTCCAACAATGCAGTATTCAGCAGT
 CACTGACAGTTTTAGTCCACGTGTCTGGCCTTTTTTGCATCACACTATATCATCAGTTCGAAGAGCAGC
 ATTGAAACTCTGTTTACGTTATTATCAACACAGGACCAGAACTCTTCATCTTGGCTTATACCTATACTG
 CCTGATATGCTCCGACACATTTTTCAGTCTGTGTTTTGGAAAGCAGCCAGGAAATCTGGACCTTATTC
 ACAAGGTTTGGATGGAAGTGTGAGTAAGGCTTCAGTTCAGTATGTGGTAGCAGCTGCTTGGCCATGGAT
 GGGTGTGGCTTGTCTGATGATGCAGCCTTCTCATTACCTATCGATTTAAATATGTTGCTAGAAGTA
 AAAGTAGAGCCAAGGAAAAACAGGTGGTAAGGTGCGCCAAGGCCAAAGCCAGAATAAAGAAGTACTTC
 AGGAGTATATTGCAGGTGCCACCATCATGGAAGACCCAGCCACCAGGATTTGTAGTTATGCGGGC
 CAGAATGATGGCAGCCAAGTTGTTAGGACACTTTGTTGCTGATTTGTGATCCAGGTGTAATGTGGTA
 ACTCAAGAAATTAACCAGCTGAATCCCTGGGCCAGTTACTACTCTTCCATTTGAACTCCAAGTCTGCTT
 TACAGAGGATTAGTGTAGCTTTGGTAATCTGTGAATGGGCTGCTTACAAAAGGAGTGTAAAGCTGTAC
 CTTAGCTGTGCAGCCGCTTTACTTGATATCCTTTCAGAACATTTATATTATGACGAAATGGCCTTCCA
 TTCACACGAATGCAGAATGAATGTAACAACCTTATATCATCATTAGCTGATGTACATATTGAAGTTGGTA
 ATCGAGTAAACAACAATGTTTTAAACAATAGATCAAGCTAGTGACTTGGTCACTACTGTTTTAATGAAGC
 CACATCATCTTTGATTTAAATCCTCAAGTGTACAACAGTTAGATAGTAAACGACAGCAGTCCAATG
 ACAGTTACAGAGACCAACCAGGAGTGGCAAGTGTGCAGTTGAGAGTGCATACTTTTGTGCTGTGCAG
 TTGTGAGCTTGCAGCAGCTTCCGGAGAAATTAATCCTATCATAAAACCATTAATGGAGACAATTA
 AGAAGAGAATACACTAGTGCAAACTATGCAGCTCAGTGCATAGCTAACTCCTTCAGCAGTGCACAACA
 AGGACGCCCTGTCCCAATTCAAAATTTAAAAACCTCTGTAGCTCACTTTGTGTGGACCCATATCTAA
 CTCCTTGTGTACATGTCAGTACCAACACAAAGTGGCCAGGAAATTTCTAAAGGATCCACCTCAGAAAA
 AGATGGAATGCACCACTGTCCCAAGCACAGAGGTATAATTACACTCTACAGGCACGAAAGCTGCC
 TTTGCTATCACAAGTAGGCGAGGCTCCTACCCCAAAGCAGTAAAAGCTCAATAGCAGATCTTCTGCAG
 GAAGTAGTGGAAATATTCTTGTGAACCTGTAGGAGCCAGAAGCCTTACCTGGTACAACGGAGAGGAGC
 TGAATTTGCTTTGACAACCTATAGTAAAGCATTTTGGTGGTGAATGGCAGTGAAGTTGCCACATCTCTGG
 GATGCTATGGTTGGCCATTGAGGAATACAATCGACATAAATAATTTTGTGGAATCCCTCCTGGATA
 AGGGAGATAGCCCTGCTCAAGAATTGGTGAATCTCTGCAGGTTTTTGAACAGCAGCAGCTTCAATGGA
 TTCTGAGCTTCATCCCTTGTGGTCCAGCATTGGCCACATCTTTATATGTGCTTCAATACCCAGTACT
 GCAGTGAGGCACATGGCTGCTCGTTGTGTAGGTGTATGAGCAAAATAGCTACCATGGAACAATGAATA
 TTTTTTGGAGAAGTCTTCCGTGGCTGGGAGCAATTGATGACAGTGTCAAACAAGAGGGTGAATTTGA
 AGCACTTGCTGTGAATGGAACAACCTAGATGTTGGTATTGTTCCATATATTGCTCTTTAGTTGTTCT
 GTATTAGGAAGAATGAGTGTATGACAGACAGTGTGAGATTCATGGCCACGCAGTCTTTGCAACGCTAA
 TTAGACTCATGCCACTTGAGGCAGGCATTCCAGACCCCTCAAACATGTCAGCAGAATTAATCCAATTGAA
 AGCCAAGGAGCGACACTTTTTGGAGCAATTGTTAGATGGGAAAAAATGGAAAAATTAATAAATCCAGTA
 CCAATCAATGCTGAACTCAGAAAAATACAGCAGGATGGTGTGAACCTGGTTAGCATTCTTAAATAGTATA
 AACTTCATGGAATCTGTGTGATGACATGGGTTTAGGAAAAACTTACAGTCCATCTGCATTCTAGCAGG
 AGATCATTGTATAGGGCCAGGAATATGCAAGATCAAATTAGCAGAATGTATGCCACTTCTTCTCTTA
 GTGGTTTGTCCGCAACATTAACAGGCCATTGGGTGGTGAAGTAGGTAATTTGCTCTAGAGAATATC
 TCAACCCGTTGCATTACACTGGACCTCCCACTGAAAGAATAAGGTTACAGCACCAAGTAAAAAGGCACAA
 TCTAATAGTGGCTTCATATGATGTTGTGAGGAATGACATAGATTTCTTTAGAAATATTAATTTAACTAC
 TGCAATCTTGATGAAGCCATGTCATCAAAAATGGAAAAACAAAGTTGTCAAAGCAGTAAAAACAATGA
 CTGCTAATTATAGGATTATTCTTCTGGAACCAATCCAGAACAACGTTTTGGAGCTGTGGTCATTATT
 TGATTTCTCATGCCAGGATTTTTGGTACTGAACGCCAGTTTGTGCTCGATATGGTAAACCTATATTA
 GCAAGTAGGGATGCTCGAAGCTCCAGTCGAGAGCAAGAAGCAGGTGTTCTTGCTATGGATGCGCTGCACC
 GCCAAGTACTACCGTTCTTTTGGAGAAGATGAAAGAAGATGTTTTGCAGGATCTCCACCTAAAATAT
 TCAAGACTATTATTGACTCTTAGTCTCTCCAGGTTACGCTCTATGAAGATTTGCTAAGTCTCGTGCC
 AAGTGTGATGTTGATGAAACAGTTTCTCAGCTACACTTCTGAAGAACTGAAAAACCAAGCTTAAAG
 CTACAGGCCACGTATTCCAGGCATTACAGTACTTACGTAACCTGTGCAACCATCCAGCATTAGTCTTAA
 ACCTCAACATCCAGAATTAAGACCACTGCCGAAAAACTGGCAGTTCAGAATTTCTCTACATGATATT
 CAACATGCCCTAAGCTCTCAGCTTTGAAACAATTGCTGTTGGACTGCGGTTTGGGAAATGGCAGCACT
 CCGAGAGTGGCACAGAGTCTGTTGTGGCCAGCACAGGATACTGATATTCTGTCAGCTGAAAAGCATGCT
 TGATATAGTAGAGCATGATCTCCTCAAACCTCACTTGGCCCTGTGCACTTATTTGAGATTAGATGGCAGC
 ATACCTCCTGGTCAGAGGCATTCCATTGTTCCCGGTTAATAATGATCCATCTATAGACGTTCTGTTAC

TTACCACTCACGTTGGTGGCCTGGGACTTAATTTGACAGGCGCTGACACAGTAGTATTTGTGGAGCATGA
 CTGGAATCCTATGCGAGATCTACAAGCCATGGACCGGGCCATCGCATTGGGCAGAAACGTGTGGTTAAC
 GTATACCGATTGATAACCAAGAGGAACATTGGAAGAAAAATAATGGGGTTGCAGAAATCAAGATGAACA
 TAGCGAATACTGTTATTAGCCAAGAGAATTCTAGTTTGCAGAGCATGGGGACTGATCAGCTTCTTGATCT
 GTTTACTCTTGATAAGGATGGCAAAGCAGAAAAAGCTGACACCTCTACTTCTGGGAAAGCAAGTATGAAA
 TCAATCTTGGAAACCTGAGTGATCTTTGGGATCAAGAGCAGTATGATTCAGAGTACAGCCTGAAAAATT
 TTATGCATTCTCTCAAG

ACGCGTACGCGGCCGCTCGAG - GFP Tag - GTTTAA

Protein Sequence:

>RG224324 representing NM_003972
 Red=Cloning site Green=Tags(s)

MAVSRLDRLFILLDTGTPVTRKAAQQLGEVVKLHPHELNNLLSKVLIYLRSANWDTRIAAGQAVEAIV
 KNVPEWNPVPRTRQEPTESSMEDSPPTTERLNDFRFDICRLLQH GASLLGSAGAEFEVQDEKSGEVDPK
 RIARQRKLLQKGLNMGEAIGMSTEELFNDEDLDYTPTSASFVNKQPTLQAAELIDSEFRAGMSNRQKN
 KAKRMAKLFQKRSRAVETNEKSNDSTGEPEEKRRKIINVVINQSANDSKVLIDNIPDSSSLIETNE
 WPLESFCEELCNDFNPSWEVRHGAGTGLREILKAHGKSGGKMGDSTLEEMIQQHQEWLEDLVIRLLCVF
 ALDRFGDFVSDEVVAPVRETCAQTLGVVLKHMNETGVHKTVDVLLKLLTQEQWEVRHGGLLGIKYLAVR
 QDVINTLLPKVLTRIEGLQDLDDVRAVAASLVPVVEVLVYLQTKVPIINTLWDALLEDDL TAST
 NSIMTLLSSLLTYPQVQCSIQQLTVL VPRVWPFLLHHTISSVRRAALETFTLLSTQDQNSSSWLPIIL
 PDMRLRHIFQFCVLESSQIILDLIHKVWMEILLSKASVQYVVAACPWMGAWLCLMMQPSHLPIDLNMLLEV
 KARAKEKTGGKVRQGSQNKVEVLQEYIAGADTIMEDPATRDFVVMRARMMAAKLLGALCCICDPGVNVV
 TQEIKPAESLQGLLLFHLNSKALQRISVALVCEWAALQKECKAVTLAVQPRLLDILSEHLYYDEIAPV
 FTRMQNECKQLISSLADVHIEVGNRVNNNVLIDQASDLVTTVFNEATSSFDLNPQVLQQLDSKRQQVM
 TVTETNQEWQLQRVHTFAACAVVSLQQLPEKLNPIIKPLMETIKKEENTLVQNYAAQCIKLLQOCTT
 RTPCPNSKI IKNLCSLVDPYLTPCVTCPVPTQSGQENSKGSTSEKDGMMHHTVTKHRGIITLYRHQKAA
 FAITSRRGPTPKAVKAQIADLPAGSSGNILVELDEAQKPYLVQRRGAEFALTTIVKHFGGEMAVKPLHLW
 DAMVGPLRNTIDINNFDGKSLLDKGDSPAQELVNSLQVFETAAASMDSELHPLL VQHLPHLYMCLQYPST
 AVRHMAARCVGVMSKIATMETMNI FLEKVL PWLGAIDDSVKQEGAEALACVMEQLDVGIVPYIVLLVVP
 VLRMSDQTDVSRFMATQCFATLIRLMPL EAGIPDPPNMSAELIQLKAKERHFLEQLLDGKKLENYKIPV
 PINAELRKYQDGVNWLAFLNKYKLGILCDDMGLGKTLQSIICILAGDHCHRAQYARSKLAECMPLPSL
 VVCPPTLTGHVWDEVGKFC SREYLNPLHYTGPPTERIRLQH QVVRHNLIVASYDVVRNDIDFFRNIKFNY
 CILDEGHV IKNKTKL SKAVKQLTANYRIILSGTPIQNNVLELWLSFDLMPGFLGTERQFAARYGKPIIL
 ASRDARSSSREQEAGVLAMDALHRQVLPFLRRMKEDVLQDLPPKIIQDYCTL SPLQVQLYEDFAKSRA
 KCDVDET VSSATLSEETEKPKL KATGHVFQALQYLRKLCNHPALVLT PQHPFKTTAEKLVQNSSLHDI
 QHAPKLSALKQLLLDCGLGNGSTSESGTESVVAQHRILIFCQLKSMLDIVHDLLKPHLPSVTYLRDGS
 IPPQGRHSIVSRFNNDPSIDVLLL TTHVGGLGLNLTGADTVVFEHDWNPMDLQAMDRAHRIGQKRVVN
 VYRLITRGTLEEKIMGLQKFKMNIANTVISQENSSLQSMGTDQLLDLFTL DKDGKAEKADTSTSGKASMK
 SILENLSDLWDQEQYDSEYSLENFMHSLK

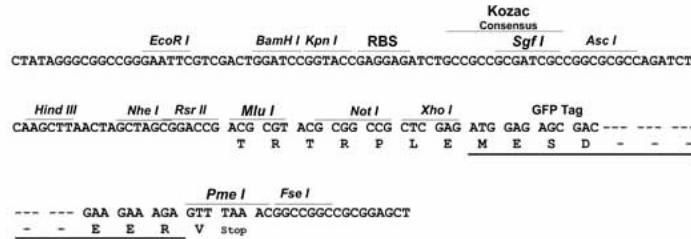
TRTRPLE - GFP Tag - V

Restriction Sites:

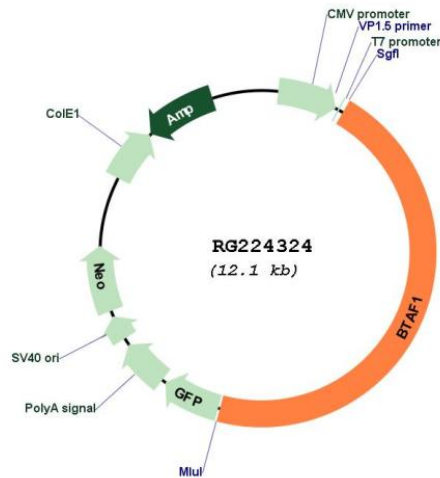
SgfI-MluI

Cloning Scheme:

Cloning sites used for ORF Shutting:



Plasmid Map:



ACCN: NM_003972
 ORF Size: 5547 bp

OTI Disclaimer:	The molecular sequence of this clone aligns with the gene accession number as a point of reference only. However, individual transcript sequences of the same gene can differ through naturally occurring variations (e.g. polymorphisms), each with its own valid existence. This clone is substantially in agreement with the reference, but a complete review of all prevailing variants is recommended prior to use. More info
OTI Annotation:	This clone was engineered to express the complete ORF with an expression tag. Expression varies depending on the nature of the gene.
Components:	The ORF clone is ion-exchange column purified and shipped in a 2D barcoded Matrix tube containing 10ug of transfection-ready, dried plasmid DNA (reconstitute with 100 ul of water).
Reconstitution Method:	<ol style="list-style-type: none">1. Centrifuge at 5,000xg for 5min.2. Carefully open the tube and add 100ul of sterile water to dissolve the DNA.3. Close the tube and incubate for 10 minutes at room temperature.4. Briefly vortex the tube and then do a quick spin (less than 5000xg) to concentrate the liquid at the bottom.5. Store the suspended plasmid at -20°C. The DNA is stable for at least one year from date of shipping when stored at -20°C.
RefSeq:	NM_003972.3
RefSeq Size:	7054 bp
RefSeq ORF:	5550 bp
Locus ID:	9044
UniProt ID:	O14981
Cytogenetics:	10q23.32
Protein Families:	Transcription Factors
Gene Summary:	This gene encodes a TAF (TATA box-binding protein-associated factor), which associates with TBP (TATA box-binding protein) to form the B-TFIID complex that is required for transcription initiation of genes by RNA polymerase II. This TAF has DNA-dependent ATPase activity, which drives the dissociation of TBP from DNA, freeing the TBP to associate with other TATA boxes or TATA-less promoters. [provided by RefSeq, Sep 2011]