

Product datasheet for **RG224300**

ENTPD5 (NM_001249) Human Tagged ORF Clone

Product data:

Product Type: Expression Plasmids
Product Name: ENTPD5 (NM_001249) Human Tagged ORF Clone
Tag: TurboGFP
Symbol: ENTPD5
Synonyms: CD39L4; NTPDase-5; PCPH
Mammalian Cell Selection: Neomycin
Vector: pCMV6-AC-GFP (PS100010)
E. coli Selection: Ampicillin (100 ug/mL)
ORF Nucleotide Sequence: >RG224300 representing NM_001249
Red=Cloning site Blue=ORF Green=Tags(s)

TTTTGTAATACGACTCACTATAGGGCGGCCGGAATTCGTCGACTGGATCCGGTACCGAGGAGATCTGCC
GCC**CGATCGCC**

ATGGCCACTTCTTGGGGCACAGTCTTTTTTCATGCTGGTGGTATCCTGTGTTTGCAGCGCTGTCTCCACA
GGAACCAGCAGACTTGGTTTGGGGTATCTTCTGTCTTCCATGTGCCCCATCAATGTCAGCGCCAGCAC
CTTGATGGAATTATGTTTGTGACGGGAGCACTGGAACCGAATTCATGTTTACACCTTTGTGCAGAAA
ATGCCAGGACAGCTTCCAATTCTAGAAGGGGAAGTTTTTGATTCTGTGAAGCCAGGACTTCTGCTTTT
TAGATCAACCTAAGCAGGGTCTGAGACCGTTCAAGGGCTTTAGAGGTGGCCAAAGACTCAATCCCCCG
AAGTCACTGGA AAAAGACCCAGTGGTCTAAAGGCAACAGCAGGACTACGCTTACTGCCAGAACAACAAA
GCCAAGGCTCTGCTCTTTGAGGTAAGGAGATCTTCAGGAAGTCACTTTCTGTTACCAAAGGGCAGTG
TTAGCATCATGGATGGATCCGACGAAGGCATATTAGCTTGGGTTACTGTGAATTTCTGACAGGTGACGT
GCATGGCCACAGACAGGAGACTGTGGGGACCTTGACCTAGGGGGAGCCTCCACCCAAATCACGTTCTCTG
CCCCAGTTTGAGAAAACCTCTGGAACAACTCCTAGGGGTACCTCACTTCTTTGAGATGTTTAAACGCA
CTTATAAGCTCTATACACATAGTTACCTGGGATTTGGATTGAAAGCTGCAAGACTAGCAACCCTGGGAGC
CCTGGAGACAGAAGGGACTGATGGGCACACTTTCCGGAGTGCCTGTTTACCGAGATGGTTGAAGCAGAG
TGGATCTTTGGGGTGTGAAATACCAAGTATGGTGGCAACCAAGAAGGGGAGGTGGCTTTGAGCCCTGCT
ATGCCGAAGTGTGAGGGTGGTACGAGGAAAACCTCACCAGCCAGAGGAGTCCAGAGAGGTTCCCTTCTA
TGCTTTCTCTTACTATTATGACCAGCTGTTGACACAGACATGATTGATTATGAAAAGGGGGTATTTTA
AAAGTTGAAGATTTTGAAGAAAAGCCAGGGAAGTGTGTGATAACTTGGAAAACCTCACCTCAGGCAGTC
CTTCTCTGTGCATGGATCTCAGCTACATCACAGCCCTGTTAAAGGATGGCTTTGGCTTTGCAGACAGCAC
AGTCTTACAGCTCACAAGAAAAGTGAACAACATAGAGACGGGCTGGGCCCTGGGGCCACCTTTCACCTG
TTGCAGTCTCTGGGCATCTCCAT

ACGCGTACGCGGCCGCTCGAG - GFP Tag - GTTTAA



[View online >](#)

Protein Sequence: >RG224300 representing NM_001249
Red=Cloning site Green=Tags(s)

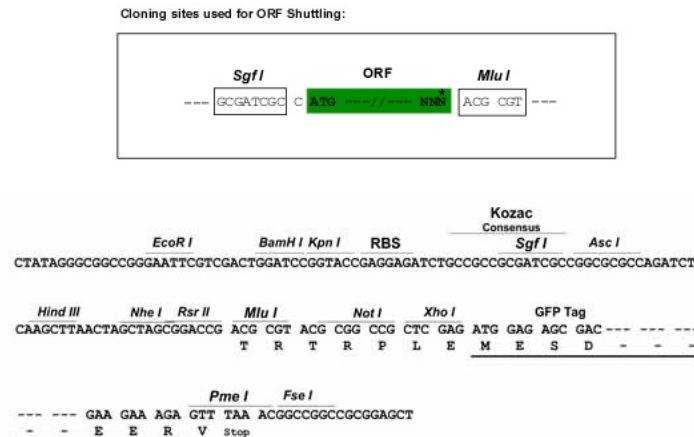
MATSWGTVFFMLVVSCVCSAVSHRNQQTWFEGIFLSSMCPINVSASTLYGIMFDAGSTGTRIHVYTFVQK
 MPGQLPILEGEVFDVSVKPLSAFVDQPKQGAETVQGLLEVAKDSIPRSHWKKTPVVLKATAGLRLLPEHK
 AKALLFEVKEIFRKSPFLVPKGSVIMDGSDEGILAWVTVNFLTGQLHGHRQETVGTLDLGGASTQITFL
 PQFEKTLQTPRGYLTSEFMFNSTYKLYTHSYLGFGLKAARLATLGALETEGTDGHTFRSACLPRWLEAE
 WIFGGVKYQYGGNQEGEVGFPCYAEVLRVVRGKLLHQPEEVQRGSFYAFSYYYDRAVDTDMIDYEKGGIL
 KVEDFERKAREVCDNLENFTSGSPFLCMDLSYITALLKDGFGFADSTVLQLTKKVNNIETGWALGATFHLL
 LQSLGISH

TRTRPLE - GFP Tag - V

Restriction Sites:

SgfI-MluI

Cloning Scheme:



ACCN: NM_001249

ORF Size: 1284 bp

OTI Disclaimer: The molecular sequence of this clone aligns with the gene accession number as a point of reference only. However, individual transcript sequences of the same gene can differ through naturally occurring variations (e.g. polymorphisms), each with its own valid existence. This clone is substantially in agreement with the reference, but a complete review of all prevailing variants is recommended prior to use. [More info](#)

OTI Annotation: This clone was engineered to express the complete ORF with an expression tag. Expression varies depending on the nature of the gene.

Components: The ORF clone is ion-exchange column purified and shipped in a 2D barcoded Matrix tube containing 10ug of transfection-ready, dried plasmid DNA (reconstitute with 100 ul of water).

Reconstitution Method:

1. Centrifuge at 5,000xg for 5min.
2. Carefully open the tube and add 100ul of sterile water to dissolve the DNA.
3. Close the tube and incubate for 10 minutes at room temperature.
4. Briefly vortex the tube and then do a quick spin (less than 5000xg) to concentrate the liquid at the bottom.
5. Store the suspended plasmid at -20°C. The DNA is stable for at least one year from date of shipping when stored at -20°C.

RefSeq: [NM_001249.5](#)

RefSeq Size: 1998 bp

RefSeq ORF: 1287 bp

Locus ID: 957

UniProt ID: [O75356](#)

Cytogenetics: 14q24.3

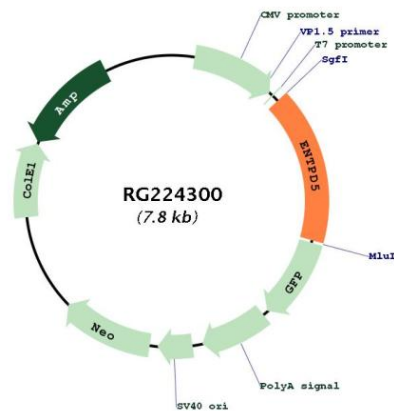
Domains: GDA1_CD39

Protein Families: Transmembrane

Protein Pathways: Purine metabolism, Pyrimidine metabolism

Gene Summary: The protein encoded by this gene is similar to E-type nucleotidases (NTPases)/ecto-ATPase/apyrases. NTPases, such as CD39, mediate catabolism of extracellular nucleotides. ENTPD5 contains 4 apyrase-conserved regions which is characteristic of NTPases. [provided by RefSeq, Jan 2009]

Product images:



Circular map for RG224300