

## Product datasheet for **RG224279**

### SMOC1 (NM\_022137) Human Tagged ORF Clone

#### Product data:

Product Type:	Expression Plasmids
Product Name:	SMOC1 (NM_022137) Human Tagged ORF Clone
Tag:	TurboGFP
Symbol:	SMOC1
Synonyms:	OAS
Mammalian Cell Selection:	Neomycin
Vector:	pCMV6-AC-GFP (PS100010)
E. coli Selection:	Ampicillin (100 ug/mL)
ORF Nucleotide Sequence:	>RG224279 representing NM_022137 Red=Cloning site Blue=ORF Green=Tags(s)

TTTTGTAATACGACTCACTATAGGGCGGCCGGAATTCGTCGACTGGATCCGGTACCGAGGAGATCTGCCGCC**CGCATCGCC**

ATGCTGCCCGCGCTGCGCCCGCTGCTCAGCCCCACTTGCTGCTGGTGTGGTGCAGCTGTCCCCTGCTCGCGGCCACCGCACCACAGGCCCCAGGTTTCTAATAAGTGACCGTGACCCACAGTGCAACCTCCACTGCTCCAGGACTCAACCCAAACCCATCTGTGCCTCTGATGGCAGGTCCTACGAGTCCATGTGTGAGTACCAGCGAGCCAAGTGCCGAGACCCGACCCTGGCGTGGTGCATCGAGGTAGATGCAAAGATGCTGGCCAGAGCAAGTGTGCGCTGGAGCGGGCTCAAGCCCTGGAGCAAGCCAAGAAGCCTCAGGAAGCTGTGTTGTCCCAGAGTGTGGCGAGGATGGCTCCTTACCAGGTGCACTGCCATACTTACACTGGGTACTGCTGGTGTGTACC CCGGATGGGAAGCCCATCAGTGGCTCTTCTGTGCAGAATAAACTCCTGTATGTTAGGTTAGTACCCGACAAGCCCTTGAGCCAGGGTAACCTCAGGAAGGAAAGATGACGGGTCTAAGCCGACACCCACGATGGAGACCCAGCCGGTGTTCGATGGAGATGAAATCACAGCCCAACTCTATGGATTAACACTTGGTGTCAAGGAC TCCAAACTGAACAACCAACATAAGAAATTAGAGAAAGTCTATTCTGTGTGACCAAGGAGAGGCAGAGTG CCCTGGAAGAGGCCAGCAGAAATCCCGTGAGGGTATTGTATCCCTGAATGTGCCCTGGGGACTCTA TAAGCCAGTGAATGCCACCACTGCTACTGCTGGTGTGTGCTGGTGGACACAGGGCGCCCGCTG CCTGGACCTCCACAGCTACGTGATGCCAGTTGTGAGAGCAGCCAGGGCCAAGACTACAGAGGCGG ATGACCCCTTCAAGGACAGGGAGCTACCAGGCTGTCCAGAAGGGAAGAAAATGGAGTTTATCACCAGCCT ACTGGATGCTCTCACCCTGACATGGTTAGGCCATTAACCTCAGCAGCGCCCACTGGAGGTGGGAGGTTT CAGAGCCAGACCCAGCCACACCTGGAGGAGCGGGTGTGCACTGGTATTTACGCCAGCTGGACAGCA ATAGCAGCAACGACATTAACAAGCGGGAGATGAAGCCCTTCAAGCGCTACGTGAAGAAGAAGCCAAGCC CAAGAAATGTGCCGGCTTTACCAGCTACTGTGACCTGAACAAAGACAAGGTCATTTCACTGCCTGAG CTGAAGGGCTGCCTGGGTGTTAGCAAAGAAGTAGGACGCCTCGTC

**ACGCGT**ACGCGGCCGCTCGAG - GFP Tag - GTTTAA



[View online »](#)

**Protein Sequence:** >RG224279 representing NM\_022137  
Red=Cloning site Green=Tags(s)

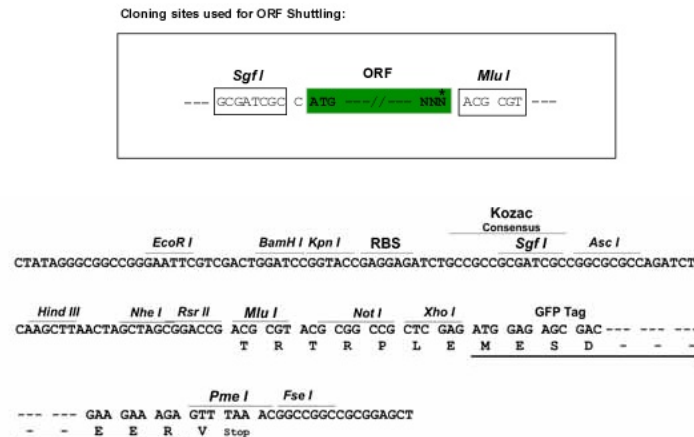
MLPARCARLLTPHLLLVLVQLSPARGHRTTGPRFLISDRDPQCNLHCSRTQPKPICASDGRSYESMCEYQ  
 RAKCRDPTLGVVHRGRCKDAGQSKRLERAQALEQAKKPQEAQVPECEGEGSFTQVQCHTYTGYCWCVT  
 PDGKPISGSSVQNKTPVCSGSVTDKPLSQGNSGRKDDGSKPTPTMETQPVFDGDEITAPTLWIKHLVIKD  
 SKLNNNTNIRNSEKVVYSCDQERQSALEEAQONPREGIUIPECAPGGLYKPVQCHQSTGYCWCVLVDTGRPL  
 PGTSTRYVMPSCESDARAKTTEADDPFKDRELPGCEPKMEFITSLLDALTTDMVQAINSAAPTGGGRF  
 SEPDPSTLEERVVHWYFSQLDSNSSNDINKREMKPFKRYVKKKAKPKKARRFTDYCDLNKDKVISLPE  
 LKGCLGVSKEVGRLV

TRTRPLE – GFP Tag – V

**Restriction Sites:**

SgfI-MluI

**Cloning Scheme:**



**ACCN:** NM\_022137

**ORF Size:** 1305 bp

**OTI Disclaimer:** The molecular sequence of this clone aligns with the gene accession number as a point of reference only. However, individual transcript sequences of the same gene can differ through naturally occurring variations (e.g. polymorphisms), each with its own valid existence. This clone is substantially in agreement with the reference, but a complete review of all prevailing variants is recommended prior to use. [More info](#)

**OTI Annotation:** This clone was engineered to express the complete ORF with an expression tag. Expression varies depending on the nature of the gene.

**Components:** The ORF clone is ion-exchange column purified and shipped in a 2D barcoded Matrix tube containing 10ug of transfection-ready, dried plasmid DNA (reconstitute with 100 ul of water).

**Reconstitution Method:**

1. Centrifuge at 5,000xg for 5min.
2. Carefully open the tube and add 100ul of sterile water to dissolve the DNA.
3. Close the tube and incubate for 10 minutes at room temperature.
4. Briefly vortex the tube and then do a quick spin (less than 5000xg) to concentrate the liquid at the bottom.
5. Store the suspended plasmid at -20°C. The DNA is stable for at least one year from date of shipping when stored at -20°C.

**RefSeq:** [NM\\_022137.4](#), [NP\\_071420.1](#)

**RefSeq Size:** 3681 bp

**RefSeq ORF:** 1305 bp

**Locus ID:** 64093

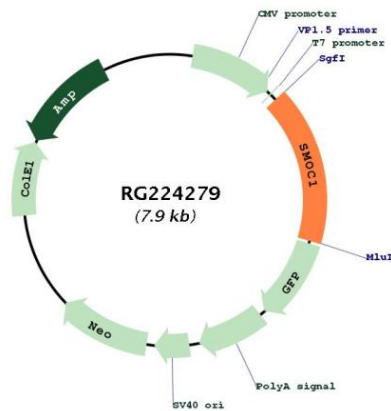
**UniProt ID:** [Q9H4F8](#)

**Cytogenetics:** 14q24.2

**Protein Families:** Secreted Protein

**Gene Summary:** This gene encodes a multi-domain secreted protein that may have a critical role in ocular and limb development. Mutations in this gene are associated with microphthalmia and limb anomalies. Alternatively spliced transcript variants encoding different isoforms have been found for this gene. [provided by RefSeq, Mar 2011]

## Product images:



Circular map for RG224279