

Product datasheet for **RG224259**

NTN3 (NM_006181) Human Tagged ORF Clone

Product data:

Product Type:	Expression Plasmids
Product Name:	NTN3 (NM_006181) Human Tagged ORF Clone
Tag:	TurboGFP
Symbol:	NTN3
Synonyms:	NTN2L
Mammalian Cell Selection:	Neomycin
Vector:	pCMV6-AC-GFP (PS100010)
E. coli Selection:	Ampicillin (100 ug/mL)



[View online »](#)

ORF Nucleotide Sequence:

>RG224259 representing NM_006181
 Red=Cloning site Blue=ORF Green=Tags(s)

TTTTGTAATACGACTCACTATAGGGCGGCCGGAATTCGTCGACTGGATCCGGTACCGAGGAGATCTGCC
 GCC**CGCATCGCC**

ATGCCTGGCTGGCCCTGGGGCTGCTGCTGACGGCAGGCACGCTCTTCGCCGCCCTGAGTCTGGGCCG
 CGGCGCCCGCCGACCCCTGCCACGATGAGGGGGTGCGCCCGCGCTGGTGCCAGGACTGGTGAACGC
 CGCCCTGGGCGCGAGGTGCTGGCTTCCAGCACGTGCGGGCGGCCGCCACTCGGCCTGCGACGCCTCC
 GACCCGCGACGGGCACACTCCCCGCCCTCCTTACTTCCCAGGGGGCACGGCCAGCCCTCTGTGCTGGC
 GCTCGGAGTCCCTGCCTCGGGCGCCCTCAACGTGACTCTCACGGTGCCCTGGGCAAGGCTTTTGAAGT
 GGTCTTGTGAGCCTGCGCTTCTGCTCAGCTCCCCAGCCTCCGTGGCCCTGCTCAAGTCTCAGGACCAT
 GGCCGAGCTGGCCCCGCTGGGCTTCTTCTCCTCCACTGTGACCTGGACTATGGCCGTCTGCCTGCC
 CTGCCAATGGCCAGCTGGCCAGGGCTGAGGCCCTGTGCTTCCCGCACCCCTGGCCAGCCTGATGG
 CAGCGGCTTCTGGCCTCAGCATGCAGGACAGCAGCCCCAGGCTGGACCTGGACAGCAGCCAGTGC
 CTCGAAGACTGGGTGACCGCCACCGACGTCCTGTAGTGCTCACAAAGCCTAGCACGGCAGGTGACCCCA
 GGGACATGGAGGCCGTCGTCCTTACTCTACGCAGCCACCGACCTCCAGGTGGGCGGGCGCTGCAAGT
 CAATGGACATGCCTCACGGTGCCTGCTGGACACACAGGGCCACCTGATCTGCGACTGTGGCATGGCACC
 GAGGGCCCTGACTGCGGCCGCTGCAAGCCCTTCTACTGCGACAGGCCATGGCAGCGGGCCACTGCCCGG
 AATCCCACGCCTGCCTCGCTTGTCTGCAACGGCCATGCCCGCCGCTGCCGCTTCAACATGGAGCTGTA
 CCGACTGTCCGGCCGCGCAGCGGGGTGTCTGTCTCAACTGCCGCACAACACCGCCGGCCGCGCCACTGC
 CACTACTGCCGGGAGGGCTTCTATCGAGACCTGGCCGTGCCCTGAGTGACCGTGGGCTGCAGGGCT
 GCGACTGCACCCGGTTGGTGTCTGCTGCAAGACCTGCAACCAGACACAGGCCAGTGTCCCTGCAAGGA
 TGGCGTCACTGGCCTCACCTGCAACCGCTGCGCGCCTGGCTTCCAGCAAAGCCGCTCCCCAGTGGCGCC
 TGTGTTAAGACCCTATCCCTGGACCCACTGAGGACAGCAGCCCTGTGCAGCCCCAGGACTGTGACTCGC
 ACTGCAAACCTGCCCGTGGCAGTACCGCATCAGCCTAAAGAAGTTCTGCAAGAAGGACTATGCGGTGCA
 GGTGGCGGTGGGTGCGCGCGGCGAGGCGCGCGCGGAGTAGCGCGCTGTGGTGCCCGCCGGGATGCGGCT
 TTCCGGAGCGGAGAGGAGCGCGCGCGGGAGTAGCGCGCTGTGGTGCCCGCCGGGATGCGGCT
 GCGGCTGCCCGCCTGCTCCCCGGCCGCGCTACCTCCTGCTGGGGGGCGGGCTGGAGCCGGGCTGG
 GGGCGGGGGGGCGGGGCCCCGGGCTCATCGCCGCCCGGAAGCCTCGTGTACCTGGAGGGACGCG
 TGGACCGCGCCTGCGGAGGCTGCAGCGACGCAACGGCGGGGGCGCTGCAGCGCCGC

AG**CGGACCG**ACGCGTACGCGCCGCTCGAG - GFP Tag - GTTTAA

Protein Sequence:

>RG224259 representing NM_006181
 Red=Cloning site Green=Tags(s)

MPGWPWLLLLTAGTLFAALSPGPPAPADPCHDEGGAPRGCVPLVNAALGREVLASSTCGRPATRADAS
 DPRRAHSPALLTSPGGTASPLCWRSESLPRAPLNVTLTVPLGKAFELVFVSLRFCAPPASVALLKSQDH
 GRSWAPLGFSSHCDDLDYGRLPAPANGPAGPGPEALCFPAPLAQPDGSLLAQSMQDSSPPGLDLDSPPV
 LQDWVATDVRVVLTRPSTAGDPRDMEAVVPYSYAATDLQVGRCKCNGHASRCLLDQGHLCDCRHGT
 EGPDCGRCKPFYCDRPWQRATARESHAACSCNGHARRCRFNMELYRLSGRRSGVCLNCRHNTAGRHC
 HYCREGFYRDPGRALSDRRACRACDCHPVGAAGKTCNQTTGQCPCDKGVTGLTCNRCAPGFQSRSPVAP
 CVKTPIPGPTEDSSPVQPDQCDSHCKPARGSYRISLKKFKCKDYAVQVAVGARGEARGAWTRFPVAVLAV
 FRSGEERARRGSSALWVPAGDAACGCPRLLPGRRYLLLGGGPGAAGGAGGRGPLIAARGSLVLPWRDA
 WTRRLRRLQRRERRGRCSAA

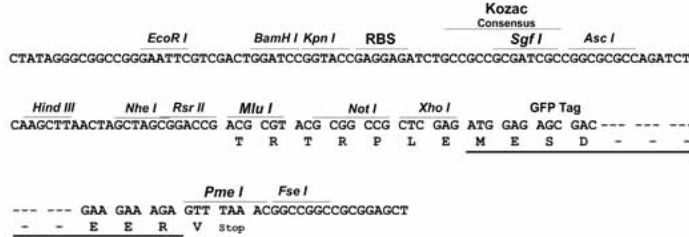
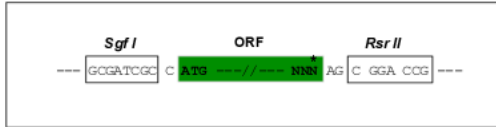
SGP**TRTRRLE** - GFP Tag - V

Restriction Sites:

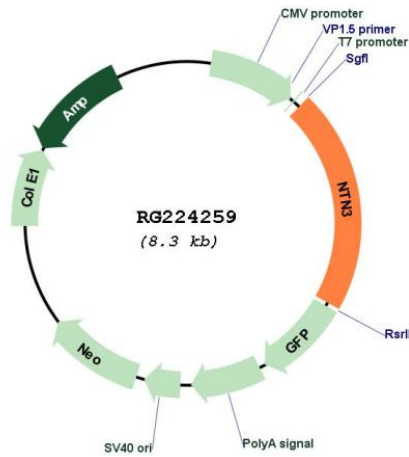
SgfI-RsrII

Cloning Scheme:

Cloning sites used for ORF Shuttling:



Plasmid Map:



ACCN: NM_006181
 ORF Size: 1740 bp

OTI Disclaimer:	The molecular sequence of this clone aligns with the gene accession number as a point of reference only. However, individual transcript sequences of the same gene can differ through naturally occurring variations (e.g. polymorphisms), each with its own valid existence. This clone is substantially in agreement with the reference, but a complete review of all prevailing variants is recommended prior to use. More info
OTI Annotation:	This clone was engineered to express the complete ORF with an expression tag. Expression varies depending on the nature of the gene.
Components:	The ORF clone is ion-exchange column purified and shipped in a 2D barcoded Matrix tube containing 10ug of transfection-ready, dried plasmid DNA (reconstitute with 100 ul of water).
Reconstitution Method:	<ol style="list-style-type: none">1. Centrifuge at 5,000xg for 5min.2. Carefully open the tube and add 100ul of sterile water to dissolve the DNA.3. Close the tube and incubate for 10 minutes at room temperature.4. Briefly vortex the tube and then do a quick spin (less than 5000xg) to concentrate the liquid at the bottom.5. Store the suspended plasmid at -20°C. The DNA is stable for at least one year from date of shipping when stored at -20°C.
RefSeq:	NM_006181.3
RefSeq Size:	1986 bp
RefSeq ORF:	1743 bp
Locus ID:	4917
UniProt ID:	O00634
Cytogenetics:	16p13.3
Protein Pathways:	Axon guidance
Gene Summary:	Netrins control guidance of CNS commissural axons and peripheral motor axons. [UniProtKB/Swiss-Prot Function]