

Product datasheet for **RG224243**

ADAMTS12 (NM_030955) Human Tagged ORF Clone

Product data:

| | |
|---------------------------|---|
| Product Type: | Expression Plasmids |
| Product Name: | ADAMTS12 (NM_030955) Human Tagged ORF Clone |
| Tag: | TurboGFP |
| Symbol: | ADAMTS12 |
| Synonyms: | PRO4389 |
| Mammalian Cell Selection: | Neomycin |
| Vector: | pCMV6-AC-GFP (PS100010) |
| E. coli Selection: | Ampicillin (100 ug/mL) |
| ORF Nucleotide Sequence: | >RG224243 representing NM_030955 Red=Cloning site Blue=ORF Green=Tags(s) |

TTTTGTAATACGACTCACTATAGGGCGCCGGGAATTCGTCGACTGGATCCGGTACCGAGGAGATCTGCC
GCC**CGATCGCC**

ATGCCATGTGCCAGAGGAGCTGGCTTGCAAACCTTTCGGTGGTGGCTCAGCTCCTTAACCTTTGGGGCGC
TTTGCTATGGGAGACAGCCTCAGCCAGGCCCGTTTCGCTTCCCGGACAGGAGGCAAGAGCATTTTATCAA
GGGCTGCCAGAATACCACGTGGTGGTCCAGTCCGAGTAGATGCCAGTGGGCATTTTTGTGCATATGGC
TTGCACTATCCCATCACGAGCAGCAGGAGGAAGAGAGATTTGGATGGCTCAGAGGACTGGGTGTACTACA
GAATTTCTCACGAGGAGAAGGACCTGTTTTTAACTTGACGGTCAATCAAGGATTTCTTTCCAATAGCTA
CATCATGGAGAAGAGATATGGGAACCTCTCCCATGTTAAGATGATGGCTTCTCTGCCCCCTCTGCCAT
CTCAGTGGCACGGTTCTACAGCAGGGCACCAGAGTTGGGACGGCAGCCCTCAGTGCTGCCATGGACTGA
CTGGATTTTTCCAACACCACATGGAGACTTTTTTCATTGAACCCGTGAAGAAGCATCCACTGGTTGAGGG
AGGGTACCACCCGCACATCGTTTACAGGAGGCAGAAAGTCCAGAAACCAAGGAGCCAACCTGTGGATTA
AAGGACAGTGTTAACATCTCCAGAAGCAAGAGCTATGGCGGGAGAAGTGGGAGAGGCACAACTTGCCAA
GCAGAAGCCTCTCTCGGCGTCCATCAGCAAGGAGAGATGGGTGGAGACTGGTGGTGGCCGACACAAA
GATGATTGAATACCATGGGAGTGAGAATGTGGAGTCTACATCCTCACCATCATGAACATGGTCACTGGG
TTGTTCCATAACCAAGCATTGGCAATGCAATTCACATTGTTGTGGTTCGGCTCATTCTACTCGAAGAAG
AAGAGCAAGGACTGAAAATAGTTCAACCATGCAGAAAAGACACTGTCTAGCTTCTGCAAGTGGCAGAAGAG
TATCAATCCCAAGAGTGACCTCAATCCTGTTTCATCACGACGTGGCTGTCTTCTCACCAGAAAGGACATC
TGTGCTGGTTTCAATCGCCCTGCGAGACCCTGGGCTGTCTCACCTTTCAGGAATGTGTGAGCCTCACC
GCAGTTGTAACATCAATGAAGATTCGGGACTCCCTCTGGCTTTCACAATTGCCCATGAGCTAGGACACAG
CTTCGGCATCCAGCATGATGGGAAAGAAAATGACTGTGAGCCTGTGGCAGACATCCGTACATCATGTCC
CGCCAGCTCCAGTACGATCCCACTCCGCTGACATGGTCCAAGTGCAGCGAGGAGTACATCACCCGCTTCT
TGGACCGAGGCTGGGGTTCTGTCTTGATGACATACCTAAAAGAAAGGCTTGAAGTCCAAGGTCATTGC
CCCCGGAGTGATCTATGATGTTACCACCAGTGCCAGCTACAATATGGACCAATGCTACCTTCTGCCAG



[View online »](#)

GAAGTAGAAAACGTCTGCCAGACACTGTGGTGCTCCGTGAAGGGCTTTTGTGCTCTAAGCTGGACGCTG
 CTGCAGATGGAACCTCAATGTGGTGAGAAGAAGTGGTGTATGGCAGGCAAGTGCATCACAGTGGGGAAGAA
 ACCAGAGAGCATTCTGGAGGCTGGGGCCGCTGGTCACCCTGGTCCCCTGTTCCAGGACCTGTGGGGCT
 GGAGTCCAGAGCGCAGAGAGGCTCTGCAACAACCCCGAGCCAAAGTTTGGAGGGAATATTGCACTGGAG
 AAAGAAAACGCTATCGCTTGTGCAACGTCCACCCTGTGCTCAGAGGCACCAACATTTCCGCAGATGCA
 GTGCAGTGAATTTGACACTGTTCCCTACAAGAATGAACTCTACCCTGGTTTCCATTTTAAACCCAGCA
 CATCCTTGTGAGCTCTACTGCCGACCCATAGATGGCCAGTTTTCTGAGAAAATGCTGGATGCTGTCTATTG
 ATGGTACCCTTGTCTTGAAGGCGGCAACAGCAGAAATGTCTGTATTAATGGCATATGTAAGATGGTTGG
 CTGTGACTATGAGATCGATTCCAATGCCACCGAGGATCGCTGCGGTGTGTGCCTGGGAGATGGCTCTTCC
 TGCCAGACTGTGAGAAAGATGTTAAGCAGAAGGAAGGATCTGGTTATGTTGACATTGGGCTCATTCCAA
 AAGGAGCAAGGGACATAAGAGTGATGAAATTGAGGGAGCTGAAACTTCTGGCCATCAGGAGTGAAGA
 TCCTGAAAAATATTACCTGAATGGAGGGTTTATTATCCAGTGAACGGGAACTATAAGCTGGCAGGGACT
 GTCTTTCAGTATGACAGGAAAGGAGACCTGGAAAAGCTGATGGCCACAGGTCCCACCAATGAGTCTGTGT
 GGATCCAGCTTCTATTCCAGGTGACTAACCTGGCATCAAGTATGAGTACACAATCCAGAAAGATGGCT
 TGACAATGATGTTGAGCAGCAGATGTACTTCTGGCAGTACGGCCACTGGACAGAGTGCAGTGTGACCTGC
 GGGACAGGTATCCGCGCCAAACTGCCATTGCATAAAGAAGGGCCGCGGGATGGTGAAAGCTACATTCT
 GTGACCCAGAAAACACAGCCCAATGGGAGACAGAAGAAGTGCCATGAAAAGGCTTGTCCACCCAGGTGGT
 GGCAGGGGAGTGGGAAGCATGCTCGGCGACATGCGGGCCACGCGGAGAGAAGAAGCGAACCGTGTGTGC
 ATCCAGACCATGGTCTCTGACGAGCAGGCTCTCCCGCCACAGACTGCCAGCACCTGTGAAGCCCAAGA
 CCCTCCTTTCTGCAACAGAGACATCCTGTGCCCTCGGACTGGACAGTGGGCAACTGGAGTGAAGTGTTC
 TGTTTCTGTGGTGGTGGAGTGGGATTCGAGTGTGCATGTGCCAAGAACCATGATGAACCTTGGCAT
 GTGACAAGGAAACCCACAGCCGAGCTCTGTGTGGCTCCAGCAATGCCCTTCTAGCCGGAGACTCTGA
 AACCAACAAGGCACATTTTCCAATGAAAAAACCCACCAACTAAAGCCCTCCCTCCACCTACATC
 CAGGCCCAGAAATGCTGACCACACCCACAGGGCTGAGTCTATGAGCACAAGCACTCCAGCAATCAGCAGC
 CCTAGTCTACCACAGCTCCAAAGAAGGAGACCTGGGTGGGAAACAGTGGCAAGATAGCTCAACCAAC
 CTGAGCTGAGCTCTCGTATCTCATTTCCTGGAAGCACTTCCAGCCCATCTCACTTCCCAATCCTT
 GAGCATTAGCCAAAGTGAGGAAATGTTTCCAGTTCAGATACTGGTCTACCTCGGAGGGAGGCCTTGTA
 GCTACAACAACAAGTGGTCTGGCTTGCATCTTCCCGCAACCCTATCACTTGGCTGTGACTCCATTTT
 ACAATACCTTGACCAAAGGTCCAGAAATGGAGATTCACAGTGGCTCAGGGGAAGAAGAGAACAGCCTGA
 GGACAAAGATGAAAGCAATCCTGTAATATGGACCAAGATCAGAGTACCTGAAATGACGCTCCAGTGGAA
 AGTACAGAAATGCCACTGCACCTCCACTAACACCAGATCTCAGCAGGGAGTCTGGTGGCCACCCTTCA
 GCACAGTAAATGGAAGGACTGCTCCCGAGCCAAAGGCCACTACTCCGAACTGGGACACCCAGAGTTGA
 GGGGATGGTACTGAAAAGCCAGCCAACACTCTGCTCCCTCTGGGAGGAGACCACCAGCCAGAACCCTCA
 GGAAAGACGGCAAACCGTAACCACCTGAAACTTCCAAACAACATGAACCAAAACAAAAAGTTCTGAACCAG
 TCCTGACTGAGGAGGATGCAACAAGTCTGATTACTGAGGGCTTTTTGCTAAATGCCTCCAATTACAAGCA
 GCTCACAACGGCCACGGCTCTGCACACTGGATCGTGGAAACTGGAGCGAGTGTCCACCACATGTGGC
 CTGGGGCCCTACTGGAGAAGGGTGGAGTGCAGCACCCAGATGGATTCTGACTGTGCGGCCATCCAGAGAC
 CTGACCCTGCAAAAAGATGCCACCTCCGTCCCTGTGCTGGCTGGAAAGTGGGAACTGGAGCAAGTGCTC
 CAGAAAATGCAGTGGGGCTTCAAGATACGCGAGATTAGTGGTGGACAGCCGGGACCCGGAACTCTG
 AGGCCATTTCACTGCCAGTTCCTGGCCGGCATTCTCCCCATTGAGCATGAGCTGTAACCCGGAGCCCT
 GTGAGGCGTGGCAGGTGGAGCCTTGGAGCCAGTGTCCAGGTCTGTGGAGGTGGAGTTCAGGAGAGAGG
 AGTGTCTGTCCAGGAGGCCTCTGTGATTGGACAAAAAGACCCACATCCACCATGTCTTGAATGAGCAC
 CTGTGCTGTCACTGGCCACTGGGAACTGGGACCTGTGTTCCACTTCTGTGGAGGTGGCTTTCAGAAGA
 GGACTGTCCAATGTGTGCCCTCAGAGGGCAATAAAACTGAAGACCAAGACCAATGTCTATGTGATCACAA
 ACCCAGACCTCCAGAATCAAAAAATGCAACCAGCAGGCCTGCAAGAAAAGTGCCGATTTACTTTGCACT
 AAGGACAACTGTGAGCCAGTTTCTGCCAGACACTGAAAGCCATGAAGAAATGTTCTGTGCCACCCTGA
 GGGCTGAGTGTGCTTCTCGTGTCCCAGACACACATCACACACCCAAAGGCAAGAAGCAACGGTT
 GCTCCAAAAGTCAAAAGAACTC

ACGCGTACGCGGCCGCTCGAG - GFP Tag - GTTTAA

Protein Sequence: >RG224243 representing NM_030955
 Red=Cloning site Green=Tags(s)

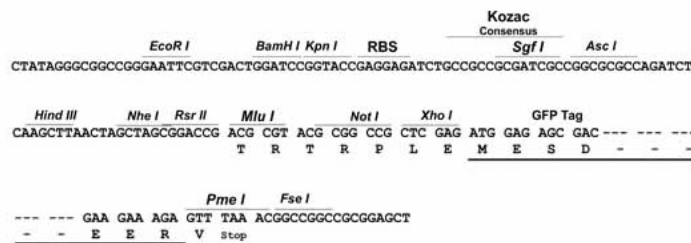
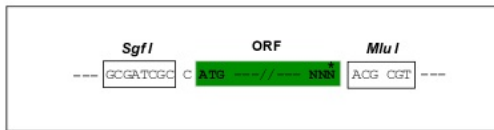
MPCAQRSWLANLSVVAQLLNFGALCYGRQPQPGPVRFPDRRQEHFIKGLPEYHVVGPRVVDASGHFLSYG
 LHYPITSSRRKRDLDGSEDWVYYRISHEEKDLFFNLTVNQGFLSNSYIMEKRYGNLSHVKMMASSAPLCH
 LSGTVLQQGTRVGTAAALSACHGLTGFFQLPHGDFFIIEPVKKHPLVEGGYHPHIVYRRQKVPETKEPTCGL
 KDSVNISQKQELWREKWERHNLPSRSLRRRSISKERWVETLVVADTKMIEYHGSENVESYILTIMNMVTG
 LFHNPSIGNAIHIVVVRLLILLEEEEQGLKIVHHAETLSSFCWKQKINPKSDLNPVHHDVAVLLTRKDI
 CAGFNRPCETLGLSHLSGMCQPHRSCNINEDSGLPLAFTIAHELGHSGFIQHDGKENDCEPVRHPYIMS
 RQLQYDPTPLTWSKCSSEYITRFLDRGWGFLDIPKKKGLKSKVIAPGVIYDVHHCQQLQYGNATFCQ
 EVENVCQTLWCSVKGFCRSKLDAAADGTQCCEKKWCMAGKCITVGKKPESIPGGWGRWSPWSHCSRTCGA
 GVQSAERLCNNPEPKFGGKYCTGERKRYRLCNVHPCRSEAPTFRMQCSEFDTVPYKNELYHWFPIFNPA
 HPCELYCRPIDGQFSEKMLDAVIDGTPCFEGNSRNVCIINGICKMVGCDYEIDSNATEDRCGVCLGDGSS
 CQTVRKMFKQKEGSGYVDIGLIPKGARDIRVMEIEGAGNFLAIRSEDPEKYLLNGGFI IQWNGNYKLAGT
 VFQYDRKGDLEKLMATGPTNESVWIQLLFQVTNPGIKYEYTIQKDGLDNDVEQQMYFWQYGHWTECSVTC
 GTGIRRTAHCICKGRGMVKATFCDPETQPNGRQKKCHEKACPPRWWAGWEACSATCGPHGEKKRTVLC
 IQTMVSDQALPPTDCQHLLKPKTLLSCNRDILCPSDWTVGNWSECSVSCGGGVIRSVTCAKNHDEPCD
 VTRKPNRSLCGLQQCPSSRRVLKPNKGTISNGKNPPTLKPVPPTSRPRMLTPTGPESMSTSTPAISS
 PSPTTASKEGDLGGKQWQDSSTQPELSSRYLISTGSTSQPILTSQSLSIQSEENVSSSDTGPSTEGGLV
 ATTTSGSGLSSSRNPITWPVTPFYNTLTKGPEMIEHSGSGEEREQPEDKDESNPVIWTKIRVPGNDAPVE
 STEMLAPPLTPDL SRESWWPPFSTVMEGLLPSQRPTTSETGTPRVEGMVTEKPANTLLPLGGDHQPEPS
 GKTANRNHLKLPNNMNQTKSSEPVLT EEDATSLITEGFLLNASNYKQLTNGHGSAAHWVGNWSECSTCG
 LGAYWRRVECTQMDSCAAIQRPDPAKRCHLRPCAGWKVGNWSKCSRNCSSGGFKIREIQCVDSRDHRNL
 RPFYHCQFLAGIPPLSMSCNPEPEAWQVEPWSQCSRSCGGGVQERGVFCPGGLCDWTKRPTSTMSCNEH
 LCCHWATGNWDL CSTSCGGGFQKRTVQCVPSEGNKTEDQDQCLCDHKPRPPEFKKCNQACKKSADLLCT
 KDKLSASFQTLKAMKKCSVPTVRAECCFSCPQTHITHTQRQRRLQKSKEL

TRTRPLE - GFP Tag - V

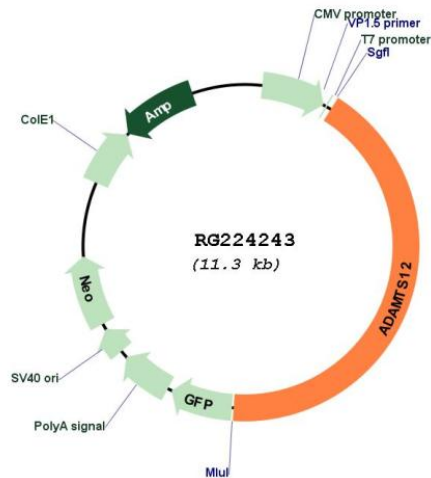
Restriction Sites: SgfI-MluI

Cloning Scheme:

Cloning sites used for ORF Shutting:



Plasmid Map:



ACCN: NM_030955

ORF Size: 4782 bp

OTI Disclaimer: The molecular sequence of this clone aligns with the gene accession number as a point of reference only. However, individual transcript sequences of the same gene can differ through naturally occurring variations (e.g. polymorphisms), each with its own valid existence. This clone is substantially in agreement with the reference, but a complete review of all prevailing variants is recommended prior to use. [More info](#)

OTI Annotation: This clone was engineered to express the complete ORF with an expression tag. Expression varies depending on the nature of the gene.

Components: The ORF clone is ion-exchange column purified and shipped in a 2D barcoded Matrix tube containing 10ug of transfection-ready, dried plasmid DNA (reconstitute with 100 ul of water).

Reconstitution Method:

1. Centrifuge at 5,000xg for 5min.
2. Carefully open the tube and add 100ul of sterile water to dissolve the DNA.
3. Close the tube and incubate for 10 minutes at room temperature.
4. Briefly vortex the tube and then do a quick spin (less than 5000xg) to concentrate the liquid at the bottom.
5. Store the suspended plasmid at -20°C. The DNA is stable for at least one year from date of shipping when stored at -20°C.

RefSeq: [NM_030955.4](#)

RefSeq Size: 4955 bp

RefSeq ORF: 4785 bp

Locus ID: 81792

UniProt ID: [P58397](#)

Cytogenetics: 5p13.3-p13.2

Protein Families: Druggable Genome

Gene Summary: This gene encodes a member of the ADAMTS (a disintegrin and metalloproteinase with thrombospondin motifs) protein family. Members of the family share several distinct protein modules, including a propeptide region, a metalloproteinase domain, a disintegrin-like domain, and a thrombospondin type 1 (TS-1) motif. Individual members of this family differ in the number of C-terminal TS-1 motifs, and some have unique C-terminal domains. The enzyme encoded by this gene contains eight TS-1 motifs. It may play roles in pulmonary cells during fetal development or in tumor processes through its proteolytic activity or as a molecule potentially involved in regulation of cell adhesion. [provided by RefSeq, Jul 2008]