

Product datasheet for **RG224229**

WWP2 (NM_199423) Human Tagged ORF Clone

Product data:

Product Type:	Expression Plasmids
Product Name:	WWP2 (NM_199423) Human Tagged ORF Clone
Tag:	TurboGFP
Symbol:	WWP2
Synonyms:	AIP2; WWp2-like
Mammalian Cell Selection:	Neomycin
Vector:	pCMV6-AC-GFP (PS100010)
E. coli Selection:	Ampicillin (100 ug/mL)
ORF Nucleotide Sequence:	>RG224229 representing NM_199423 Red=Cloning site Blue=ORF Green=Tags(s)

TTTTGTAATACGACTCACTATAGGGCGGCCGGAATTCGTCGACTGGATCCGGTACCGAGGAGATCTGCC
GCC**CGATCGCC**

ATGGCATCTGCCAGCTCTAGCCGGGCAGGAGTGGCCCTGCCTTTTGAGAAGTCTCAGCTCACTTTGAAAG
TGGTGTCCGAAAGCCCAAGGTGCATAATCGTCAACCTCGAATTAACCTCTACGTGGAGGTGGCGGTGGA
TGGACTCCCAGTGAGACCAAGAAGACTGGGAAGCGCATTGGGAGCTCTGAGCTTCTCTGGAATGAGATC
ATCATTTTGAATGTCACGGCACAGAGTCATTTAGATTTAAAGGTCTGGAGCTGCCATACCTTGAGAAATG
AACTGCTAGGCACCGCATCTGTCAACCTCTCCAACGTCTTGAAGAACAATGGGGGCAAAATGGAGAACAT
GCAGCTGACCCTGAACCTGCAGACGGAGAACAAGGCAGCGTTGTCTCAGGCGGAGAGCTGACAATTTTC
CTGGACGGGCCAACTGTTGATCTGGGAAATGTGCCTAATGGCAGTGCCCTGACAGATGGATCACAGCTGC
CTTCGAGAGACTCCAGTGGAACAGCAGTAGCTCCAGAGAACCAGGACCCAGCCCCAGCACAACCTGCTT
TGGTGGAAAGATCCCGGACGCACAGACATTCGGGTGCTTCAGCCAGAACAACCCAGCAACCCGGCGAGCAA
AGCCCCGGTGCTCGGAGCCGGCACCAGCCCGTCAAGAACTCAGGCCACAGTGGCTTGGCCAATGGCA
CAGTGAATGATGAACCCACAACAGCCACTGATCCCGAAGAACCTCCGTTGTTGGTGTGACGTCCCCACC
TGCTGCACCCTTGAGTGTGACCCCGAATCCCAACAGACTTCTCTCCCTGCCAGCCACACCCGGCTGAA
GGAGAGGAACCCAGCACTTCGGGTACACAGCAGCTCCAGCGGCTGCCAGGCCCCGACGCTCTGCCTG
CTGGATGGGAACAGCGAGAGCTGCCCAACGGGACGTGTCTATTATGTTGACCACAATACCAAGACCACCAC
CTGGGAGCGGCCCTTCTCCAGGG

ACGCGTACGCGGCCGCTCGAG - GFP Tag - GTTTAA



[View online »](#)

Protein Sequence: >RG224229 representing NM_199423
Red=Cloning site Green=Tags(s)

MASASSSRAGVALPFEKSQLTLKVVSAKPKVHNRPINSYVEVAVDGLPSETKKTGKRIGSELLWNEI
 IILNVTAQSHLDLKVWSCHTLRNELLGTASVNL SNVLKNNGGKMENMQLTLNLQ TENKGSVVSGGELTIF
 LDGPTVDLGNVPNGSALTDGSQLPSRDSSGTAVAPENRHQPPSTNCFGGRSRTHRHSGASARTTPATGEQ
 SPGARSRHRQPVKNSGHSLANGTVNDEPTTATDPEEPSVVGVTSPPAAPLSVTPNPNTTSLPAPATPAE
 GEEPSTSGTQQLPAAAQAPDALPAGWEQRELPNGRYYYYVDHNTKTTTWERPLPPG

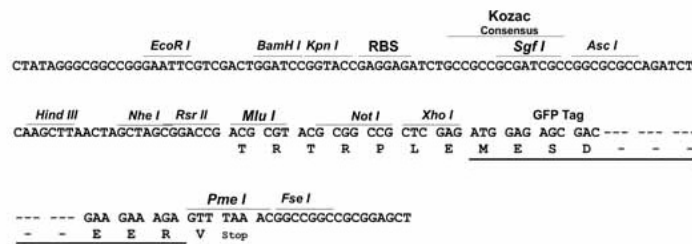
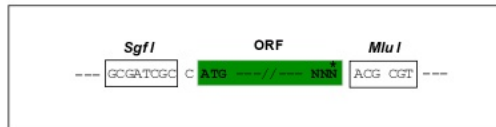
TRTRPLE - GFP Tag - V

Restriction Sites:

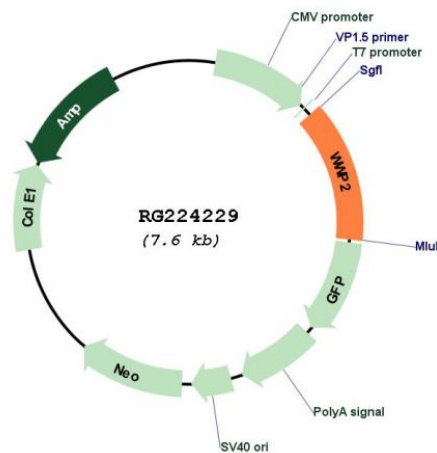
SgfI-MluI

Cloning Scheme:

Cloning sites used for ORF Shuttling:



Plasmid Map:



ACCN: NM_199423

ORF Size: 1005 bp

OTI Disclaimer:	The molecular sequence of this clone aligns with the gene accession number as a point of reference only. However, individual transcript sequences of the same gene can differ through naturally occurring variations (e.g. polymorphisms), each with its own valid existence. This clone is substantially in agreement with the reference, but a complete review of all prevailing variants is recommended prior to use. More info
OTI Annotation:	This clone was engineered to express the complete ORF with an expression tag. Expression varies depending on the nature of the gene.
Components:	The ORF clone is ion-exchange column purified and shipped in a 2D barcoded Matrix tube containing 10ug of transfection-ready, dried plasmid DNA (reconstitute with 100 ul of water).
Reconstitution Method:	<ol style="list-style-type: none">1. Centrifuge at 5,000xg for 5min.2. Carefully open the tube and add 100ul of sterile water to dissolve the DNA.3. Close the tube and incubate for 10 minutes at room temperature.4. Briefly vortex the tube and then do a quick spin (less than 5000xg) to concentrate the liquid at the bottom.5. Store the suspended plasmid at -20°C. The DNA is stable for at least one year from date of shipping when stored at -20°C.
RefSeq:	NM_199423.1 , NP_955455.1
RefSeq Size:	2659 bp
RefSeq ORF:	1007 bp
Locus ID:	11060
Cytogenetics:	16q22.1
Protein Families:	Druggable Genome
Protein Pathways:	Ubiquitin mediated proteolysis
Gene Summary:	This gene encodes a member of the Nedd4 family of E3 ligases, which play an important role in protein ubiquitination. The encoded protein contains four WW domains and may play a role in multiple processes including chondrogenesis and the regulation of oncogenic signaling pathways via interactions with Smad proteins and the tumor suppressor PTEN. Alternatively spliced transcript variants encoding multiple isoforms have been observed for this gene, and a pseudogene of this gene is located on the long arm of chromosome 10. [provided by RefSeq, Jul 2012]