

Product datasheet for **RG224221**

GPR179 (NM_001004334) Human Tagged ORF Clone

Product data:

Product Type: Expression Plasmids
Product Name: GPR179 (NM_001004334) Human Tagged ORF Clone
Tag: TurboGFP
Symbol: GPR179
Synonyms: CSNB1E; GPR158L; GPR158L1
Mammalian Cell Selection: Neomycin
Vector: pCMV6-AC-GFP (PS100010)
E. coli Selection: Ampicillin (100 ug/mL)
ORF Nucleotide Sequence: >RG224221 representing NM_001004334
Red=Cloning site Blue=ORF Green=Tags(s)

TTTTGTAATACGACTCACTATAGGGCGGCCGGAATTCGTCGACTGGATCCGGTACCGAGGAGATCTGCC
 GCCCGATCGCC

ATGGGCACCAGGGGAGCGGTCA TGCCCCCTCTATGTGGGGGCTGCTGGGCTGCTGTTTTGTCTGTGCCT
 GGGCTCTGGGGGTCCACGGCCATCCGCTCTGCCCCCTCTGTCTTCCCAAGTCAAGCCAGGATCTGT
 ACCCATGCAGGTGCCCTAGAGGGGGCCGAGGCCGCCCTCGTTATCTCTACTCTGGAGATGCCAGCAG
 CTATCACAGGTGAATTGCAGTGAGCGCTATGAAGCGCTGGGGCAGGAGCCATGCCAGGGCTCCCCCAA
 GCCTACAGGGGAGCGGGCACCTTGCCAGGCCGCAATTTTCTCAACATGCTGCTGCAAGCCAAACGA
 CATCCGTGAGTCCAGTGTGGAGGAGGATGTGGAATGTTACCAGGCACTGGTCCGCAGCGTGGCCGAGGGG
 GACCCAAGAGTGTACAGGGCTTTGCTGACCTTTAACCTCCACCAGGGGCCAGCCACCTACAGCTGGCCC
 TGCAGGCCACCCGGACTGGGAGGAAACCATCCTGCAGGACTTGTCTGGGAACTGGGTGCAGGAGGAGAA
 CCCTCCTGGGGACCTGGACACCCCTGCCCTGAAGAAGCGAGTGTGACCAATGACCTAGGGAGCCTCGGC
 AGCCCCAAGTGGCCGAGGCAGATGGATATGTGGGGGACACGCAGCAGGTGAGGCTGTCTCCTCTTTCC
 TGGAAATGCCAGGAGGGACGGCTCCGACCTGGATGGCTGATCACA CTCTGCCACCTTCTATGGACTCAA
 GCCAGACCTCAGCCCAGAAGTCAAGGGGCGAGTGCAGATGGACGTAGATCTCCAGAGTGTGGACATCAAT
 CAGTGTGCAAGTGGCCAGGCTGGTACTCTAACACACACCTGTGTGATCTCAACAGCACCCAGTGTGTTT
 CCTGGAGAGTCAAGGGCTTTGTTCTTGGCCGCTACCTCTGCCGCTGCCGACCTGGATTCTACGGGGCAAG
 CCCCTCTGGGGGTTAGAGGAGAGTGACTTCCAGACTACCGGGCAATTCGGGTTCCAGAAGGCAGATCT
 GGGAGACTGCTGCAGTGTCTGCCATGTCTGAGGGCTGCACCAGCTGCATGGATGCCACACCGTGCCTGG
 TGAAGAGGCCGCGGTGCTGCGGGCCGCTGTGCTGGCCTGCCAGGCTGCTGCATGCTGGCCATCTTCT
 GAGCATGCTGGTCTCCTACCGCTGCCGCCGAACAAGAGGATCTGGGCATCTGGAGTGGTCTGCTGGAA
 ACTGCTCTTTTGGATTCTGCTGCTTTACTTTCTGTCTTCATCCTATACTTCAAGCCAGTGTATTCC
 GCTGCATCGCTCTCGTGGGTGCGGCTGCTGGGTTTTGCCATCGTCTACGGCACCATCATACTCAAGCT
 TTACAGAGTGTGCAGCTGTTTCTGTCTCGAACGCCAGCGGAGTGCCCTTCTGAGCAGCGGGCGGCTG



[View online »](#)

CTGCGGCGCTGGGGCTGCTCCTGCTACCTGTGCTGGGCTTCTGGCTGTGTGGACCRRTGGGCGCCCTGG
AGCGAGGCATCCAGCACGCACCTCTGGTATCCGAGGCCACACTCCCAGTGGCCGCCATTTCTACCTCTG
TCACCAGACCGCTGGGACTACATCATGGTTGTGGCTGAGCTGCTGCTGTGCTGGGGCAGCTTCTCT
TGCTACGCCACACGGGCTGTGCTCTCGGCTTCCATGAGCCACGCTACATGGGCATCGCCCTGCACAATG
AGCTACTGCTTTCCGCTGCCTCCACACAGCCAGGTTTGTGCTGGTCCCTCTCTGCACCCGGACTGGAC
CCTCCTCTCTTCTTCTCCACACCCACAGCACAGTACCACCACGCTGGCTCTGATCTTCATCCCTAAG
TTCTGGAAGCTGGGGCTCCTCCCCGGGAGGAGATGGTGGATGAGGTGTGTGAGGACGAGCTGGACCTGC
AGCACTCAGGCTCTACCTTGGCAGCAGCATCGCCTCAGCCTGGAGTGAACACAGCCTGGACCTGGAGA
CATTTCGGGACGAGCTGAAGAAGCTCTATGCCAGCTAGAGGTCCACAAAACCAAGGAAATGGCCGCAAAAC
AACCCCACTGCCCAAGAAGCGAGGCAGCTCATGCCAGGGACTGGGCGCTCCTTCATGAGGTACCTGG
CGGAATCCCCGAGGCCCTGGCCAGGCAGCACTCCCGGACTCAGGATCCCAGGCCACGGCAGCCTGCC
CGGCTCCTCCCGCCGGCTCCTCAGCTCCAGCTCCAGGAACCCGAGGGGACACCAGCTCTGCACAAG
TCCCGCAGCACCTATGACCAGCGCAGGGAGCAGGACCCGCTCTTCTGACTCACTGCTGAGGAGGAAGC
TGGCCAAGAAGGCTCTGAACAGAGAGCCGGGAGTGGTGGAGGGGCCCTGCCCTGGCTTCAGGTC
AGCCAGCGCCACAACCTGACGGTGGGAGAGAGGCTACCAGAGCCGGCCGCTCTCTGCAGAAGTCG
CTCAGTGTGGCCAGCTCCAGGAAAAGGCTTGTCTCATGGCCAGCCAGGCTACCTGGAGGAGACCTACC
GGCAAGCAAGGAGCGGGAGGAGCGGAAGAAGGCCAAGGCAGCCATGGCCAGCCTGGTGGGAGGGCCATC
AGCCAGGAGGCTGGAGCGGCTCGAGGGCCCCCTGTCACTCCACCTCCCCTGCCAAGAGCAGCAGC
GTGGACAGCTCTCACACCTCTGGGAGGCTTATGAGGAGGCTAGGAGAAGGCTGCCTCATCCACCCATCA
GGCACCAGGTTTCTACCCCATCTTGGCCCTGTCTGGGGCTGGGAGAGCAAGGATGCTATCTCCAC
CTCCACCTTGGCTCCAGCTCTGTGCCAGCTTAGCTCCAACCCAGCCCTGCCCTGGCACCAGTCCCA
GTATCCCAACAAGCCCCAATTACTCACCTACATCTGCCCTGGGAGAACGAGAATGCCAGCCAAGC
AAGAAAATGTGCCCAAGGAAGGCCCTCAGGGCCAGAGCGAGGCCACCACTCCCCTGCCAGCTCGAGC
CAGGCTCTGGAGGGCCCTCTCTGTTGACGTAGAGAAAAGCAAGGCTGGGAGAATGAGATGGACGACGAG
GATGCACATCACCAGAGGGAAGCTAATGATGTGGACGAAGACAGGCCAAGATCTTCCCTAAATCCCA
GCCTCAAGGCCCTGTTCAAGGAGGTTCCATGCGCAGCCTGGGGCTGGCGATTAAGCTCTGACCCGTTT
TCGGAGCACCTACAGAGAGAAGGAGAGTGTGGAGGAGAGTCCCGAGGGGACAGACGCGGACTGCGGGA
GAGAGTATGGGGGACCCCTCCGATCGCCAGGCTAGGCCGGCCCAAGGCGGTGAGTAAGCAGGCCGCTC
TTATCCCTCCGATGACAAGGAGTCCCTCCAGAACCAACAGAACGCTCACACCAGCAGGATGCTCCAAGT
CTGTCAACGGGAGGGCAGCAGGGAACAAGAAGACAGAGGCAGGAGGATGACCCAGGCTAGGGGAACGG
AAAGCTGAGAGAGCAGGTAAAACAGGGCTTGCATGCTGAGGCAAGTTTCCAGGGACAAAACATCAAGC
AATCAAAAAGAAACCCCTGTGGGTGGCAGGAAGTGCCTAAAGCTGGCCTCCAGTCCCTCGCAGCGCTGA
CCACAGGGTGGCAGAGGTATGCCCTGGGAGGTCAGTGAATCAGAAAACGCGTCAGCCAGACAGTGGCAAC
AAGGCCGAAATCTGCCCTGGGAGACGAGTGAAGGAGCCCAAGTTCAGGGGCACTAAGACAAGACCCAG
GTGACTCCAAAAAAGAGAGGGGAGGCCCGGGGAAAAATCAGAGCCCATAGATGTGGTCCCATGATGCG
GAAAAAGCCAGAGAGGCTGGTGGAGGAGCAGGAAGCAGTGTGTCCTGGGAGAGTCCGATCGAGGAGGT
CTGTCCCTGGGTGAGTCCCTCAGGACCTGGCAGAATCAGAGACAAATCTGAGGCGGGGACAGTGTGG
AGGCCAGGAAGGTGGAGAAGCTGGGTGGGAAGCTGCTGGCCAGAAGCTCATACCCCTGACATACCCAA
GGCAGAGCCGTGCTCCCTGGGAGCAAGTGAAGGAGGCGAGGATGGGAAACAGCCCAAGAGGCAGTGAAG
GATCTCCCTCAGGAAAAGCAGAAAACAGGAAAGCAACCTTTTGGAAAGAACAGAAAACCGGAGGAGACT
TGGAGTCTCTTTGTCATGGGAGAGTACAGATTTCCGGGGCCCTCAGCAGTCTCAATTCAGGCCCCAGG
AAGCTCAGAGTGTTCAGGGAGTTTGGGAGTGGCATTGCTGAAGTGTGTCTGTGGGAGGCAGGAGATGCT
CCTGCTATCCAGAAAGCAGAGATCTGTCCCTGGGAGCTGGATGATAACGTGATGGGGCAGGAAATGCTGA
GTCTGGGACAGGTAGAGAATCTCTTCAAGAAAAGGAAAAGCCTCCAGAAAAGGAAAGCTTTGGAGAGAT
GGGGGAACAACTGTGAAAGCAGTGCAGAAATTAAGTCAACAGCAGGAGTCAATTTGTCCAGGGAGAGC
ACGGTCCCTGGGCACTCCAGCCATGTCTAGACAATTCCTCATCAAAGCTGGTAGCCAATTCCTATGCA
ATGGAGGAAGCAGAGCAACGCAGGTGTGTCCACAGGAAGATCTCAGGCCGGAGGCACAGGAAGCAACCC
TGCCAAAACAGAAATCTGTCCCTGGGAGGTAATGAAAGAACAAGAGAGGAATGGACATCAGCACAGGTG
CCAAGAGGAGGAGAAATCTCAAAAGGACAAGGAGAAAATGCCTGGAAAATCGGAAATCGAAGATGTACAG
CTTGGGAAAAGCCTGAGGGGAGATCCAAAAGCAAGAAGCGGTGGGCCCTGGGAGAGTGTGGACCTGG
CAGCTTCTCCCAACAACCAGTCTCAAGACACAGAGAGACCCCAACCCCTTCTCCAGATGTGAGGCAGT
GTGGGAAGCAAGCTGCCGACATTTGCCCTTGGATGTGGAGGAAAACCTGACTGCTGGGAAAGGCAGAAA

TCTGTCCCTGGGAGGTGGGTGCTGGAGCAGGGGAGGAAAGGGCTTTGGGAGCTGAGGCCATTAGGAAATC
TCCAAATGATACAGGCAAGGTTTCTGCAGATCTTGGACCCAGGGAGAGAGCTGTTACTGCTCCAGAGAAG
CCACAGAAGCCAACCCAGAGTGGGAGGTGGCTTGTCCCTGGGGGAGTGTGGTCCAGGGCCTGTTCTC
AGCATCCAGGTA CTCTAGATGCTGATGGACAAAAGCTGGGTTCCAGGAACTGGATCATATGGGCTGCAG
GCCAGGTGAAGTGTCCCTGGGAAGCACAGGAAGCTGTACCAAGTAAAAAGCCAAGATCTGTCCCTGG
GAGGTAAGTGAAGGA CTACTGGGAAGGGATTGGACAAAAGGCAGGGAGTGAATCAGCAGAGCAGAGGG
AGAAAGCTCTAGAAAAGGGGAGACTCACTTCCCTGGGAGAAGACTATCAAAAAGGGATGGCAAACTGTG
TCAACAACAGGAAACTATTTGTATTTGGGAGAACAAGGACTTGAGGGAATCCCTGCTCAGGCCCCCAAG
ATCTCAGACTTGCCAGCAGCATGAGTAGTGAAGTGGCAGAGGGACATTCCCTGGAAGCAACAGAGAAGG
GGGACCTGAGACAAGACCCAAAGACAGGTTCTTCCAGAACACATAACCCAAAGAAAAGCTCCAGCTGC
AGACACAGAAGAATTCACTACTGAAGTGGGAAAAACAAGCCATGAGCTACAATCCGTCTGTCCATGG
GAGACCACTGCCAGCAGATCCGTCTCTCACCTAGACAGACAGCGCCCTGACCAACCTAAAGTAGCT
CCCAGAGACTGGTCAGCACTGGGGCAGGGCCGCTGACGTGTGCCATGGGATGTTCTGTATGCAGGTGT
GTATAAATCTGACAGCAGTGCCAAGGCTGAGACCTGTCCCTGGGAAGTACTGAAAGAATCCCTGTCAA
GGGTGTCAAGGCAGGATGGAAGGGGACTCTCAAGAAGAGAAAGGCAGAGCCCGAAAAATCAGAGC
CAAAAGGTGTGCCAGTTCAGAAAAGCCAGAGATGGCAGACTTCAGGCAGCAGGAGGCTGTGTGTCCCTG
GGAGAGTCAAGATGGCAAGGGTCTGTCCCCACAGCCAGCCAGATGCTTCTGACAGAAGCAGAGGCAGT
TCTGAGGCAGCAGGCAGTGTGGAGACCAGGGTAGCGGAAGTGTGTCTGTGGGAAGTGGTAGAGGCTCCCT
CTGCCAAGAAAGCAGAGATCTGCCCTTGGGAGGCGGGTGGAGGAGCAGCAGAGGAAGGGGAACAGGAAAG
AGAATCACAAGGGCAAGGAGAGATGTTCCCTT CAGAAGGCAGGACCTGGAGGGACGGAAGAACA CTCTCA
AAAGCAGCAGCAAAGCCAGAGAGCAGGAGGCAGTCTGCCCTGGGAAGGCACAGGCTCAGGAGGGCTCT
TGCCCCAGTCAGGTGCCCTGGACCCAGA ACTCAAAGTCAGCCCCAAGGAAGCAGGCAGCATGGGAAGCAG
GATGGCAGAGCTGTGCCAATGGGAAATCACAGATCCAGAAGGAAATAAAATAAAGGGTACCATGGCAGAG
ATCTGTCTGGGAGGAACTGGAGTCCCATCTGAGGAATCTGGCCTCCTGGCTTTAACAGCAACTCGGA
GAGAATTTTTCCCCACAGCTCCTGAAAAACCACTATGCCTTTTAGTCCATGGGCCTCTGGATCACTTCTT
TCCAGAAAGCAAAATCCCTGCCCAAGGTAAGCAGGCCAGCCAGTACTTCACTCTAGAAGGTGT CAGA
GAACTACAAGGACCTTCAGGGCTTGAGCCAAGGACCAGCTTAGCCCCAGAGCCAAGTCTCCAGGAAGCTG
AGTCTCAGTCTTCGTCTTA ACTGAAGACTCAGGCCAAGTGGCTTTTGAAGCTCAGTATGAAGAATTCAC
CCCTCCCACTGTCTATCCTTGGGATTGGGAG

AGCGGACCGACGCGTACGCGGCCGCTCGAG - GFP Tag - GTTTAA

Protein Sequence: >RG224221 representing NM_001004334
 Red=Cloning site Green=Tags(s)

```

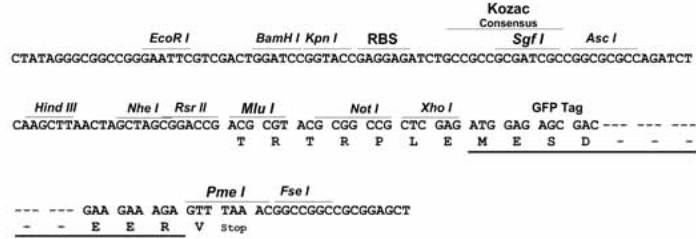
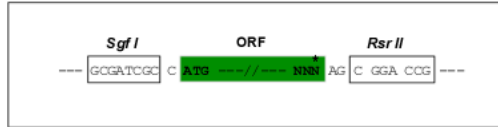
MGTRGAVMPPPMWGLLGCCFVCAWALGGPRPIRSLPPLSSQVKPGSVPMQVPLEGAEALAYLYSGDAQQ
LSQVNCSEYERAGAGAMPGLPPSLQGAAGTLAQANFLNMLLQANDIRESSVEEDVEWYQALVRSVAEG
DPRVYRALLTFNPPPGASHLQLALQATRTGEETILQDLSGNWVQEENPPGDLDTPALKKRVLTNDLGSLG
SPKWPQADGYVGDYVQVRLSPPFLECQEGRLRPGWLITLSATFYGLKPDLSPEVRGQVQMDVDLQSVGIN
QCASGPGWYSNTHLCDLNSTQCVPLESGQFVLGRYLCRCRPGFYGASPSGGLLEESDFQTTGQFGFPEGRS
GRLLQCLPCPEGCTSCMDATPCLVEEAAYLRAAVLACQACCMALIFLSMLVSYRCRRNRKIWASGVVLE
TYLFGFLLLYFPVFIYFKPSVFRICIALRWVRLGFAIVYGTIILKLYRVLQLFLSRTAQRSALLSSGRL
LRLGLLLLPLVFLAVWTXGALERGIQHAPLVIRGHTPSGRHFYLCHHDRWDYIMVVAELLLLWGSFL
CYATRVLVSAFHEPRYMGIALHNELLSAAFHTARFVLPVSLHPDWLTLFFFHTSTVTTTLALIFIPK
FWKLGAPPREEMVDEVCDELQHSQSYLGSASAWSEHSLDIPGDIRDELKLYAQLEVHKTKEMAAN
NPHLPKKRGSSCQGLGRSFMRYLAEPALARQHSRDSGSPGHGSLPGSSRRRLSSSLQEPEGTALHK
SRSTYDQRREQDPPLLDSSLRRKLAKKARTESSRESVEGPPALGFRSASAHNLTVGERLPRARPASLQKS
LSVASSREKALLMASQAYLEETYRQAKEREERKAKAAMASLVRRPSARRLERPRGAPLSAPPSPAKSSS
VDSSHTSGRLHEEARRLPHPPIRHQVSTPILALSGGLGEPMLSPTSTLAPALLPALAPTPAPALAPVP
VSPQSPNLLTYICPWENAEIPAKQENVPQEGSPGPERGHHSPAPARARLWRALSVAVEKSRAGENEMDAE
DAHHRQREANDVDEDRPKIFPKSHSLKAPVQQGSMRSLGLAIKALTRSRSTYREKESVEESPEQNSGTAG
ESMGAPSRSPRLGRPKAVSKQAALIPSDDKESLQNNQNAHTSRMLQVCQREGSREQEDRGRRTQGLGER
KAERAGKTGLAMLQVSRDKNIKQSKEIPVQWQELPKAGLQSLGSADHRVAEVCPEWVTESETRQPDSDGN
KAEICPWETSEGAPESRALRQDPGDSQKKRGEARGKSEPIDVVPMMRKKPERLVREQEAVCPWESADRGG
LSPGSAPQDPGRIRDKSEAGDSVEARKVEKPGWEAAGPEAHTPDIKAEPVCPWEASEGGEDGKPAQEAVK
DLPQEKQKTRKATFWKEQKPGGDLESLCPWESTDFRGPASVSIQAPGSSECSGSLGSGIAEVCLWEAGDA
PAIQKAEICPWELDDNVMGQEMLSLGTGRESLQEKEKASRKGSGFEMGEQTVKAVQKLSQQQESVCPRES
TVPGHSSPCLDNSSSKAGSQFLCNGGSRATQVCPQEDLRPEAQEATPAKTEICPWEVNEREETWTSQV
PRGGESQKDKKMPGKSEIEDVTAWKEPEGQIQKQEAVGPWESVDPGFSFPQPRPQDTERPQTLQMSG
VGSKAADICPLDVEENLTAGKAEICPWEVGAGAGEERALGAEAIRKSPNDTGKVSADLGPERRAVTAPEK
PQKPTPEWEVACPVGSGVPGACSHPGTLDADGPKAGFQELDHMGCRPGEVCPWEAQEAATSEKAKICPW
EVSEGTGKGLDQKAGSESAEQREKALEKGRITSLGEDVSKGMALCQQQETICIWENKDLRESPAQAPK
ISDLPSSMSSEVAEGHSLEATEKGLRQDPKTSFPEHITQEKAPAADTEEFTEDEGEKTSHELQSVCPW
ETTAPADSVSHLDRQRPDQPKASSQRLVSTGGRAADVCPWDVDPDAGVYKSDSSAKAETCPWEVTERIPVK
GVSQRDQKGDSDQEEKGRAPEKSEPKGVPVQKPEMADFRQQEAVCPWESQDGKGLSPQAPDASDRSRGS
SEAAGSVETRVAEVCLWEVVEAPSAKKAEICPWEAGGAAEEGEQERESQGGEMFLQKAGPGGTEEHFS
KAAAKPREQEAVCPGEGTGSGLLPQSGALDPELKVSPKEAGSMGSRMAELCQWEITDPEGNKIKGTMA
ICPGEETGVPSEESGLLALTATREFFPTAPEKPLCLLVHGLDHFHPESKIPCPKVSRRPASTFTLEGVR
ELQGPSGLEPRTSLAPEPSLQEAESQSSSLTEDSGQVAFEAQYEEFTPPTVYPWDWE
  
```

SGPTRRRLE - GFP Tag - V

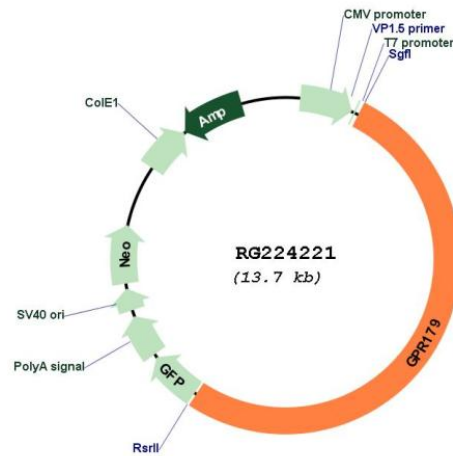
Restriction Sites: SgfI-RsrII

Cloning Scheme:

Cloning sites used for ORF Shuttling:



Plasmid Map:



ACCN: NM_001004334

ORF Size: 7101 bp

OTI Disclaimer: The molecular sequence of this clone aligns with the gene accession number as a point of reference only. However, individual transcript sequences of the same gene can differ through naturally occurring variations (e.g. polymorphisms), each with its own valid existence. This clone is substantially in agreement with the reference, but a complete review of all prevailing variants is recommended prior to use. [More info](#)

OTI Annotation: This clone was engineered to express the complete ORF with an expression tag. Expression varies depending on the nature of the gene.

Components: The ORF clone is ion-exchange column purified and shipped in a 2D barcoded Matrix tube containing 10ug of transfection-ready, dried plasmid DNA (reconstitute with 100 ul of water).

Reconstitution Method:	<ol style="list-style-type: none">1. Centrifuge at 5,000xg for 5min.2. Carefully open the tube and add 100ul of sterile water to dissolve the DNA.3. Close the tube and incubate for 10 minutes at room temperature.4. Briefly vortex the tube and then do a quick spin (less than 5000xg) to concentrate the liquid at the bottom.5. Store the suspended plasmid at -20°C. The DNA is stable for at least one year from date of shipping when stored at -20°C.
RefSeq:	<u>NM_001004334.1, NP_001004334.1</u>
RefSeq Size:	7980 bp
RefSeq ORF:	7104 bp
Locus ID:	440435
UniProt ID:	<u>Q6PRD1</u>
Cytogenetics:	17q12
Protein Families:	Druggable Genome, Transmembrane
Gene Summary:	This gene encodes a member of the glutamate receptor subfamily of G protein-coupled receptors. The encoded protein has an EGF-like calcium binding domain and a seven transmembrane domain in the N-terminal region of the protein. Mutations in this gene are associated with congenital stationary night blindness type 1E. [provided by RefSeq, Apr 2012]