

## Product datasheet for **RG224200**

### AP4 (REPIN1) (NM\_001099696) Human Tagged ORF Clone

#### Product data:

Product Type:	Expression Plasmids
Product Name:	AP4 (REPIN1) (NM_001099696) Human Tagged ORF Clone
Tag:	TurboGFP
Symbol:	REPIN1
Synonyms:	AP4; RIP60; Zfp464; ZNF464
Mammalian Cell Selection:	Neomycin
Vector:	pCMV6-AC-GFP (PS100010)
E. coli Selection:	Ampicillin (100 ug/mL)



[View online »](#)

**ORF Nucleotide Sequence:**

>RG224200 representing NM\_001099696  
 Red=Cloning site Blue=ORF Green=Tags(s)

TTTTGTAATACGACTCACTATAGGGCGGCCGGAATTCGTCGACTGGATCCGGTACCGAGGAGATCTGCC  
 GCC**CGGATCGCC**

ATGCTGGAACGTGTTGCAGGGGCCCTGGCCATGGGCCTGGCCAGCCCCGACTCCTTTCTGGGCCCT  
 CCCAGGAGTACCCCAGACCCTGGGAAGGAGTCCCGCGGCTGAGGCAACAAGGCACGTAGTGGCCCA  
 GTCTGGTGCCCAAGCCCCAGGCAGGGCCCATCGCTGTGCCCACTGTGAAGGCACCTCCCTGGCTGGGTG  
 GCTCTGTGGCTTACACCCGCGGTGCCAGGCCCGGTGCCCTTGCCTGCCCTGAGTGTGGCCGTCGCT  
 TTCGCCATGCCCCCTTCTAGCACTGCACCGCCAGGTCCATGCTGCTGCCACCCAGACCTGGGCTTTGC  
 CTGCCACCTCTGTGGCAGAGCTTCCGAGGCTGGGTGGCCCTGGTTCTGCATCTGCGGGCCATTACGCT  
 GCAAAGCGGCCCATCGCTTGTCCAAATGCGAGAGACGCTTCTGGCGACGAAAGCAGCTTCGAGCTCATC  
 TGCGGCGGTGCCACCCTCCGCCCGGAGGCCCGCCCTTCATATGCGGCAACTGTGGCCGGAGCTTTGC  
 CCAGTGGGACCAGCTAGTTGCCACAAGCGGGTGCACGTAGCTGAGGCCCTGGAGGAGGCCGAGCCAAG  
 GCTCTGGGGCCCCGCGCCAGGGGCCCGCCCGCGGTGACCGCCCCCGGCCCGGTGGAGATGCCGTCGACC  
 GCCCTTCCAGTGTGCCTGTTGTGGCAAGCGCTTCCGGCACAAGCCCAACTTGATCGCTCACCGCCGCT  
 GCACACGGGCGAGCGGCCACCAGTGCCCGAGTGCGGGAAGCGCTTTACCAATAAGCCCTATCTGACT  
 TCGCACCGGCGCATCCACACCGGCGAGAAGCCCTACCCGTGCAAAGAGTGCAGGCCCGCTTCCGGCACA  
 AACCCAACCTGCTGTCTCACAGCAAGATTCACAAGCGATCCGAGGGGTGCGCCAGGCCGCCCGGCC  
 GGGGAGCCCCAGCTGCCAGCGGCCCCAGGAGTCCCGGCGGAGCCACCCCGCGGTACCTCTGAAA  
 CCGGCCAGGAGCCGCCAGGGGCCCGCAGAGCACCCGAGACCCGATCGAAGCCCCCCCCCTCCC  
 TCTACAGCTGCGACGACTGCGGAGGAGCTTCCGGTGGAGCGCTTCTGCGGGCCACCAGCGGCAGCA  
 CACCGGGGAGCGGCCCTTCACTGCGCCGAGTGCGGGAAGAACTTCGGCAAGAAGACGCACCTGGTGGCG  
 CACTCGCGCTGCACTCCGGCGAGCGCCCTTCGCCTGCGAGGAGTGCAGGCCCGCTTCTCCAGGGCA  
 GCCATCTGGCGGCGCATCGGCGGACCACGCCCCGATCGGCCCTTCTGTGTCCCGACTGCGGCAAGGC  
 CTTCCGCCACAAACCCTACCTGGCGGCGCACCGGCGCATCCACACCGGCGAGAAGCCCTACGCTGCCCC  
 GACTGCGGCAAAGCCTTACGCCAGAAGTCCAACCTGGTGTGCGACCGGCGCATCCACAGGGCGAGCGGC  
 CCTACGCTGTCCGACTGCGACCGCAGCTTACGCCAGAAGTCCAACCTCATACCCACCGCAAGAGCCA  
 CATCCGGGACGGCGCTTCTGCTGTGCCATCTGTGGCCAGACCTCGACGACGAGGAGAGACTCCTGGCC  
 CACCAGAAGAAGCACGATGTC

**ACGCGTACGCGGCCGCTCGAG** – GFP Tag – GTTTAA

**Protein Sequence:**

>RG224200 representing NM\_001099696  
 Red=Cloning site Green=Tags(s)

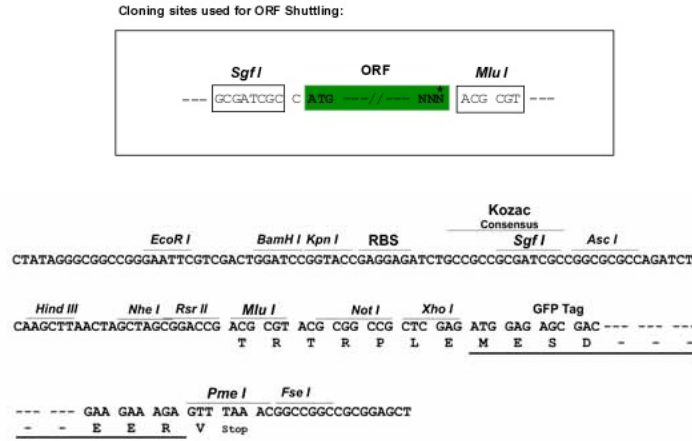
MLERRCRGPLAMGLAQPRLLSGPSQESPQTLGKESRGLRQQGTSVAQSGAQAPGRAHRAHCRRHFPGWV  
 ALWLHTRRCQARLPLPCPECGRRFRHAPFLALHRQVHAAATPDLGFACHLCGQSFQWVALVHLRAHSA  
 AKRPIACPKCERRFWRRKQLRAHLRRCHPPAPEARPFICGNCGRSFAQWDQLVAHKRVHVAEAL EAAAK  
 ALGPRPRGRPAVTAPRPGDAVDRPFQACCGKFRHKPNLIAHRRVHTGERPHQCPECGKRFNTKPYLT  
 SHRRIHTGEKPYPCKEGRRFRHKPNLLSHSKIHKRSEGSQAAPGPGSPQLPAGPQESAAEPTPAVPLK  
 PAQEPPPAPPEHPQDPIEAPPSLYSCDDCGRSFRLERFLRAHQHQHTGERPFTCAECGKNFGKTHLVA  
 HSRVHSGERPFACEECGRRFSQSHLAAHRRDHAPDRPFVCPDCGKAFRHKPYLAAHRRIHTGEKPYVCP  
 DCGKAFSQQSNLVSHRRIHTGERPYACPDGRSFSQKSNLITHRKSHIRDGAFCCAICGQTFDDEERLLA  
 HQKKHDV

**TRTRPLE** – GFP Tag – V

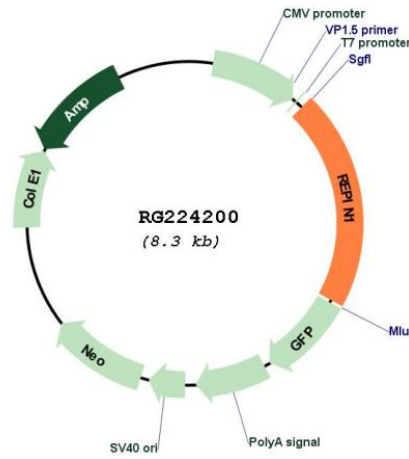
**Restriction Sites:**

Sgfl-MluI

Cloning Scheme:



Plasmid Map:



ACCN: NM\_001099696

ORF Size: 1701 bp

<b>OTI Disclaimer:</b>	The molecular sequence of this clone aligns with the gene accession number as a point of reference only. However, individual transcript sequences of the same gene can differ through naturally occurring variations (e.g. polymorphisms), each with its own valid existence. This clone is substantially in agreement with the reference, but a complete review of all prevailing variants is recommended prior to use. <a href="#">More info</a>
<b>OTI Annotation:</b>	This clone was engineered to express the complete ORF with an expression tag. Expression varies depending on the nature of the gene.
<b>Components:</b>	The ORF clone is ion-exchange column purified and shipped in a 2D barcoded Matrix tube containing 10ug of transfection-ready, dried plasmid DNA (reconstitute with 100 ul of water).
<b>Reconstitution Method:</b>	<ol style="list-style-type: none"><li>1. Centrifuge at 5,000xg for 5min.</li><li>2. Carefully open the tube and add 100ul of sterile water to dissolve the DNA.</li><li>3. Close the tube and incubate for 10 minutes at room temperature.</li><li>4. Briefly vortex the tube and then do a quick spin (less than 5000xg) to concentrate the liquid at the bottom.</li><li>5. Store the suspended plasmid at -20°C. The DNA is stable for at least one year from date of shipping when stored at -20°C.</li></ol>
<b>RefSeq:</b>	<a href="#">NM_001099696.2</a> , <a href="#">NP_001093166.1</a>
<b>RefSeq Size:</b>	2986 bp
<b>RefSeq ORF:</b>	1704 bp
<b>Locus ID:</b>	29803
<b>UniProt ID:</b>	<a href="#">Q9BWE0</a>
<b>Cytogenetics:</b>	7q36.1
<b>Gene Summary:</b>	Sequence-specific double-stranded DNA-binding protein required for initiation of chromosomal DNA replication. Binds on 5'-ATT-3' reiterated sequences downstream of the origin of bidirectional replication (OBR) and a second, homologous ATT sequence of opposite orientation situated within the OBR zone. Facilitates DNA bending.[UniProtKB/Swiss-Prot Function]