

Product datasheet for **RG224188**

ANGPTL6 (NM_031917) Human Tagged ORF Clone

Product data:

Product Type:	Expression Plasmids
Product Name:	ANGPTL6 (NM_031917) Human Tagged ORF Clone
Tag:	TurboGFP
Symbol:	ANGPTL6
Synonyms:	AGF; ARP5
Mammalian Cell Selection:	Neomycin
Vector:	pCMV6-AC-GFP (PS100010)
E. coli Selection:	Ampicillin (100 ug/mL)



[View online »](#)

ORF Nucleotide Sequence:

>RG224188 representing NM_031917
 Red=Cloning site Blue=ORF Green=Tags(s)

TTTTGTAATACGACTCACTATAGGGCGGCCGGGAATTCGTCGACTGGATCCGGTACCGAGGAGATCTGCC
 GCC**CGGATCGCC**

ATGGGGAAGCCCTGGCTGCGTGCCTACAGCTGCTGCTCTGCTGGGCGCGTCTGGGCGGGCGGGCG
 CCCGCGCTGCACCTACACCTTCGTGCTGCCCCGCAGAAAGTTCACGGGCGCTGTGTGCTGGAGCGGCC
 CGCATCCACGCGGGGACGCCCGAGGCCCAACGCCAGCGAGCTGGCGGCGCTGCGCATGCGCGTCGGC
 CGCCACGAGGAGCTGTTACGCGAGCTGCAGAGGCTGGCGGCGCCGACGCGCCGTGGCCGGGAGGTGC
 GCGCGCTGCGCAAGGAGAGCCGCGGCTGAGCGCGCCCTGGGCCAGTTGCGCGCGCAGCTGCAGCACGA
 GGCGGGGCCCGGGCGGGCCCGGGGGCGGATCTGGGGCGGAGCCTGCCGCGGCGTGGCGCTGCTCGGG
 GAGCGCGTCTAACGCGTCCGCCGAGGCTCAGCGCGCAGCCGCCGGTCCACCAGCTGGACGTCAAGT
 TCCGCGAGCTGGCGCAGCTCGTACCCAGCAGAGCAGTCTCATCGCCCGCTGGAGCGCCTGTGCCCGGG
 AGGCGCGGGCGGGCAGCAGCAGGTCCTGCCGCCACCCCACTGGTGCCTGTGGTCCGGTCCGTCTGTG
 GGTAGCACCAAGTACACCAAGTAGGATGCTGGACCCAGCCCGAGAGCCCGAGAGACCAGACCCAGAGAC
 AGCAGGAGCCCATGGCTTCTCCCATGCCTGCAGGCCACCCTGCGTCCCCACCAAGCCTGTGGGCCCGTG
 GCAGGATTGTGCAGAGGCCCGCCAGGCAGGCCATGAACAGAGTGGAGTGTATGAAGTGCAGTGGGCCGT
 CACGTAGTGTCTGTATGGTGTGAGCAGCAACTGGAGGGTGGAGGCTGGACTGTGATCCAGCGGAGGCAAG
 ATGGTTCAGTCAACTTCTCACTACCTGGCAGCACTATAAGGCGGGCTTTGGGCGGCCAGACGGAGAATA
 CTGGCTGGGCCTGAACCCGTGTATCAGCTGACCAGCCGTGGGGACCATGAGTGTGTTCTCTGGAG
 GACTGGGGGGCCGTGGAGCACGTGCCCACTATGATGGCTTCTCCCTGGAACCCGAGAGCAGCACCCTACC
 CCCTGCGGCTTGGCCAGTACCATGGTGTGCTGGAGACTCTTTCTTGGCACAATGACAAGCCCTTCAG
 CACCGTGGATAGGACCGAGACTCCTATTCGGGTAAGTGTGCCCTGTACCAGCGGGGAGGCTGGTGGTAC
 CATGCCTGTGCCCACTCCAACCTCAACGGTGTGTGGCACCACGGCGGCCACTACCGAAGCCGCTACCAGG
 ATGGTGTCTACTGGGCTGAGTTTCGTGGTGGGGCATATTCTCTCAGGAAGGCCCATGCTCATTCCGGCC
 CCTGAGCTG

AC**GGGCGCTCGAG** – GFP Tag – GTTTAA

Protein Sequence:

>RG224188 representing NM_031917
 Red=Cloning site Green=Tags(s)

MGKPWLRALQLLLLLGASWARAGAPRCTYTFVLPQKFTGAVCWSPASTRATPEANASELAALRMRVG
 RHEELRELQRLAAADGAVAGEVRALRKE SRGLSARLQQLRAQLQHEAGPGAGPGADLGAEPAAALALLG
 ERVLNASAEAQRAAARFHQLDVKFRELAQLVTQSSLIARLERLCPGGAGGQQQVLPPLVPPVVPVRLV
 GSTSDTSRMLDPAPEPQRDQTRQEQEPMA SPMPAGHPAVPTKPVGPWQDCAEARQAGHEQSGVYELRVGR
 HVVSVWCEQQLEGGWTVIQRRQDGSVNF FTTWQHYKAGFGRPDGEYWLGLEPVYQLTSRGDHELLVLE
 DWGGRGARAHYDGF SLEPE SDHYRLRLGQYHGDAGDSL SWHNDKPFSTVDRDRDSYSGNCALYQRRGWWY
 HACAHSNLNGVWHHGGHYRSRYQDGVYWA EFRGGAYSLRKAAMLIRPLKL

TRPLE – GFP Tag – V

Chromatograms:

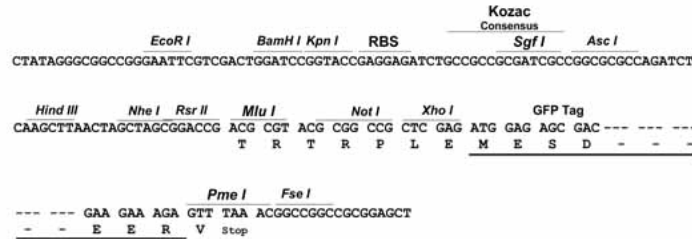
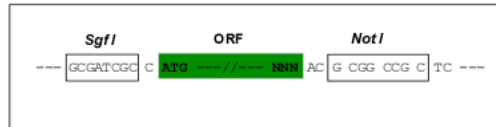
https://cdn.origene.com/chromatograms/ja2771_e09.zip

Restriction Sites:

Sgfl-NotI

Cloning Scheme:

Cloning sites used for ORF Shutting:


ACCN: NM_031917

ORF Size: 1410 bp

OTI Disclaimer: Due to the inherent nature of this plasmid, standard methods to replicate additional amounts of DNA in E. coli are highly likely to result in mutations and/or rearrangements. Therefore, OriGene does not guarantee the capability to replicate this plasmid DNA. Additional amounts of DNA can be purchased from OriGene with batch-specific, full-sequence verification at a reduced cost. Please contact our customer care team at custsupport@origene.com or by calling 301.340.3188 option 3 for pricing and delivery.

The molecular sequence of this clone aligns with the gene accession number as a point of reference only. However, individual transcript sequences of the same gene can differ through naturally occurring variations (e.g. polymorphisms), each with its own valid existence. This clone is substantially in agreement with the reference, but a complete review of all prevailing variants is recommended prior to use. [More info](#)

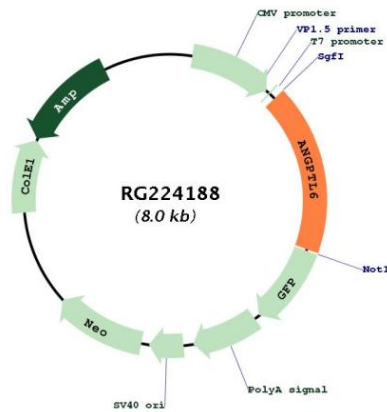
OTI Annotation: This clone was engineered to express the complete ORF with an expression tag. Expression varies depending on the nature of the gene.

Components: The ORF clone is ion-exchange column purified and shipped in a 2D barcoded Matrix tube containing 10ug of transfection-ready, dried plasmid DNA (reconstitute with 100 ul of water).

- Reconstitution Method:**
1. Centrifuge at 5,000xg for 5min.
 2. Carefully open the tube and add 100ul of sterile water to dissolve the DNA.
 3. Close the tube and incubate for 10 minutes at room temperature.
 4. Briefly vortex the tube and then do a quick spin (less than 5000xg) to concentrate the liquid at the bottom.
 5. Store the suspended plasmid at -20°C. The DNA is stable for at least one year from date of shipping when stored at -20°C.

RefSeq: [NM_031917.2](#), [NP_114123.2](#)
RefSeq Size: 1857 bp
RefSeq ORF: 1413 bp
Locus ID: 83854
UniProt ID: [Q8NI99](#)
Cytogenetics: 19p13.2
Protein Families: Druggable Genome, Secreted Protein
Gene Summary: May play a role in the wound healing process. May promote epidermal proliferation, remodeling and regeneration. May promote the chemotactic activity of endothelial cells and induce neovascularization. May counteract high-fat diet-induced obesity and related insulin resistance through increased energy expenditure.[UniProtKB/Swiss-Prot Function]

Product images:



Circular map for RG224188