

## Product datasheet for **RG224184**

### **C6ORF182 (CEP57L1) (NM\_001083535) Human Tagged ORF Clone**

#### **Product data:**

Product Type:	Expression Plasmids
Product Name:	C6ORF182 (CEP57L1) (NM_001083535) Human Tagged ORF Clone
Tag:	TurboGFP
Symbol:	CEP57L1
Synonyms:	bA487F23.2; C6orf182; cep57R
Mammalian Cell Selection:	Neomycin
Vector:	pCMV6-AC-GFP (PS100010)
E. coli Selection:	Ampicillin (100 ug/mL)



[View online »](#)

**ORF Nucleotide Sequence:**

>RG224184 representing NM\_001083535  
 Red=Cloning site Blue=ORF Green=Tags(s)

TTTTGTAATACGACTCACTATAGGGCGGCCGGAATTCGTCGACTGGATCCGGTACCGAGGAGATCTGCC  
 GCC**CGGATCGCC**

ATGGATTCTGAATTAATGCATAGTATAGTAGGAAGCTATCATAAACCTCCAGAAAGAGTATTTGTTCCCT  
 CATTACCCAGAATGAACCATCTCAGAATTGCCATCCTGCAAACCTAGAAGTTACCTCTCCTAAGATACT  
 TCATAGCCCAAATAGCCAAGCTCTTATTTTAGCCTTAAAACTCTTCAGGAAAAAATTCATCGTTTAGAG  
 CTGGAGAGAACAAGCTGAAGATAACCTGAACATTCTTTCCAGAGAAGCAGCACAGTATAAGAAGGCCCT  
 TAGAGAATGAAACAAATGAGAGAAATCTGGCACACCAGGAGCTGATAAAGCAGAAAAAGATATAAGTAT  
 ACAGTTAAGCTCAGCCCAGTCTCGTTGTACTCTTCTAGAGAAGCAACTAGAATATACAAAGAGAATGGTT  
 CTCACGTAGAGCGAGAAAAAACATGATCCTAGAACAACAGGCCAGCTTCAGAGGGAAAAAGAACAAG  
 ATCAGATGAAGCTGTATGCAAACTTGAAAAGCTTGATGTCTTAGAAAAAGAGTGTTCAGACTTACAAC  
 AACTCAGAAAACCTGCTGAGGACAAGATTAACATTTAGAAGAAAACTTAAAGGAAGAAGAACATCAGCGT  
 AAGCTATTTCAAGACAAAGCTTCTGAGCTTCAAACCTGGACTTGAAATCAGTAAAAATTATAATGTCTTCAG  
 TTTCAAATCTAAAGCACTCCAAGGAAAAAGAAGAAATCTTCAAAGAAAACTAAATGTATAAAGAGACGACC  
 ACCTTGGCAAATTTGTTCAAAGTTTGGAGCACTGCCTTTTGTGGCTGAAAAGATGAGGCAACATCGTGAC  
 CCACATATCCTTCAGAAACCTTTAACGTGACTGAGACTAGATGTCTCCCAAGCCTTCTAGAACAACCT  
 CCTGGTGTAAAGCTATTCCTCCTGACTCAGAAAAGTCCATTTCCATTTGTGACAATTTATCTGAACCTTT  
 GATGGCAATGCAAGATGAGCTGGACCAATGAGCATGGAGCACCAGAAGTACTGAAACAAATGAAGGAA  
 ACTGAAAGTCATTCACTGTGACGACATAGAATGTGAACTAGAGTGTACTCAAGAAAAATGAAATTA  
 AAGGAGAACAATCTCCAACTGAAGAAGCATCAAGACAGTGTCTGTAACCTGCAGCAAAAAGTTCAAAA  
 CTCAAAGATGAGTGAAGCTTCAGGTATTCAGCAAGAAGACAGCTACCCTAAAGGATCAAAGAACATAAAA  
 AATAGCCCCAGAAAATGTTTACTGACACTAACCTTTTTTCAGAAAAACAGCAGCTTTCATCCAATACGAG  
 TTCATAATCTTCAAATGAAATTGAGAAGAGATGATATCATGTGGGAACAG

**ACGCGT**ACGCGGCCGCTCGAG - GFP Tag - GTTTAA

**Protein Sequence:**

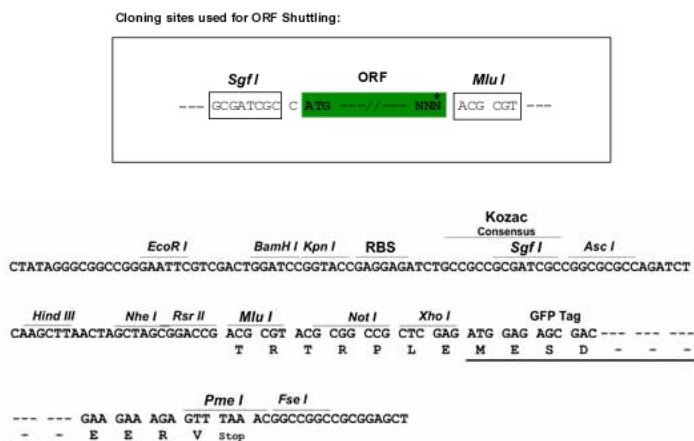
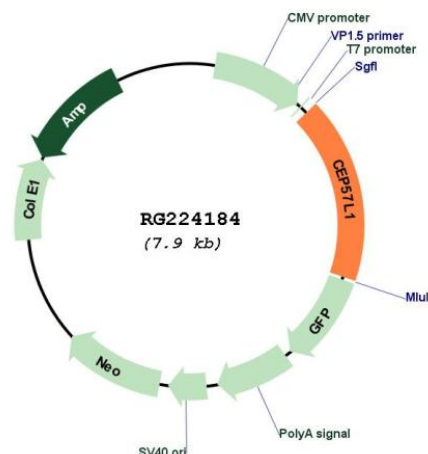
>RG224184 representing NM\_001083535  
 Red=Cloning site Green=Tags(s)

MSELMHSIVGSYHKPPERVFVPSFTQNEPSQNCHPANLEVTSPKILHSPNSQALILALKTLQEKIHRLE  
 LERTQAEDNLNLSREAAQYKKALENENLERNLAHQELIKQKDISIQLSSAQRSCTLLEKQLEYTKRMV  
 LNVEREKNMILEQQAQLQREKEQDQMKLYAKLEKLDVLEKECFRLTTTQKTAEDKIKHLEEKLEEEHQR  
 KLFQDKASELQTGLEISKIIMSSVSNLKHSKEKKKSSKTKCIKRRPPWQICSKFGALPFVAEKMRQHRD  
 PHILQKPFNVTETRCLPKPSRTTSWCKAIPPDSEKSIICDNLSELLMAMQDELQMSMEHQELLKQMK  
 TESHVCDDECELECLLKKMEIKGEQISLKKHQDSVCKLQKQVQNSKMSEASGIQQEDSYPKGSKNIK  
 NSPRKCLTDTNLFQKNSSFHPIRVHNLQMKLRRDDIMWEQ

**TRTRPLE** - GFP Tag - V

**Restriction Sites:**

Sgfl-MluI

**Cloning Scheme:**

**Plasmid Map:**


**ACCN:** NM\_001083535

**ORF Size:** 1380 bp

**OTI Disclaimer:** The molecular sequence of this clone aligns with the gene accession number as a point of reference only. However, individual transcript sequences of the same gene can differ through naturally occurring variations (e.g. polymorphisms), each with its own valid existence. This clone is substantially in agreement with the reference, but a complete review of all prevailing variants is recommended prior to use. [More info](#)

**OTI Annotation:** This clone was engineered to express the complete ORF with an expression tag. Expression varies depending on the nature of the gene.

<b>Components:</b>	The ORF clone is ion-exchange column purified and shipped in a 2D barcoded Matrix tube containing 10ug of transfection-ready, dried plasmid DNA (reconstitute with 100 ul of water).
<b>Reconstitution Method:</b>	<ol style="list-style-type: none"><li>1. Centrifuge at 5,000xg for 5min.</li><li>2. Carefully open the tube and add 100ul of sterile water to dissolve the DNA.</li><li>3. Close the tube and incubate for 10 minutes at room temperature.</li><li>4. Briefly vortex the tube and then do a quick spin (less than 5000xg) to concentrate the liquid at the bottom.</li><li>5. Store the suspended plasmid at -20°C. The DNA is stable for at least one year from date of shipping when stored at -20°C.</li></ol>
<b>RefSeq:</b>	<a href="#">NM_001083535.3</a>
<b>RefSeq Size:</b>	2915 bp
<b>RefSeq ORF:</b>	1383 bp
<b>Locus ID:</b>	285753
<b>UniProt ID:</b>	<a href="#">Q8IYX8</a>
<b>Cytogenetics:</b>	6q21
<b>Gene Summary:</b>	Centrosomal protein which may be required for microtubule attachment to centrosomes. [UniProtKB/Swiss-Prot Function]