

Product datasheet for **RG224145**

DIABLO (NM_138930) Human Tagged ORF Clone

Product data:

Product Type: Expression Plasmids
Product Name: DIABLO (NM_138930) Human Tagged ORF Clone
Tag: TurboGFP
Symbol: DIABLO
Synonyms: DFNA64; SMAC
Mammalian Cell Selection: Neomycin
Vector: pCMV6-AC-GFP (PS100010)
E. coli Selection: Ampicillin (100 ug/mL)
ORF Nucleotide Sequence: >RG224145 representing NM_138930
 Red=Cloning site Blue=ORF Green=Tags(s)

TTTTGTAATACGACTCACTATAGGGCGCCGGGAATTCGTCGACTGGATCCGGTACCGAGGAGATCTGCC
 GCC**CGATCGCC**

ATGAAATCTGACTTCTACTTCCAGAAATCAGAGCCTCATTCCCTTAGTAGTGAAGCATTGATGAGGAGAG
 CAGTGTCTTTGGTAACAGATAGCACCTCTACCTTCTCTCTCAGACCACATATGCGTTGATTGAAGCTAT
 TACTGAATATACTAAGGCTGTTTATACCTTAACCTTCTCTTTACCGACAATATAACAAGTTTACTTGGGAAA
 ATGAATTCAGAGGAGGAAGATGAAGTGTGGCAGGTGATCATAGGAGCCAGAGCTGAGATGACTTCAAAC
 ACCAAGAGTACTTGAAGCTGAAAACCACTTGGATGACTGCAGTTGGTCTTTCAGAGATGGCAGCAGAAGC
 TGCATATCAAACCTGGCGCAGATCAGGCCTCTATAACCGCCAGGAATCACATTGAGCTGGTAAAACCTGAG
 GTGGAAGAGGTGCACCAGCTCTCCCGAAAGCAGAAACCAAGCTGGCAGAAGCACAGATAGAAGAGCTCC
 GTCAGAAAACACAGGAGGAAGGGGAGGAGCGGGCTGAGTCGGAGCAGGAGGCCTACCTGCGTGAGGAT

ACGCGTACGCGGCCGCTCGAG - GFP Tag - GTTTAA

Protein Sequence: >RG224145 representing NM_138930
 Red=Cloning site Green=Tags(s)

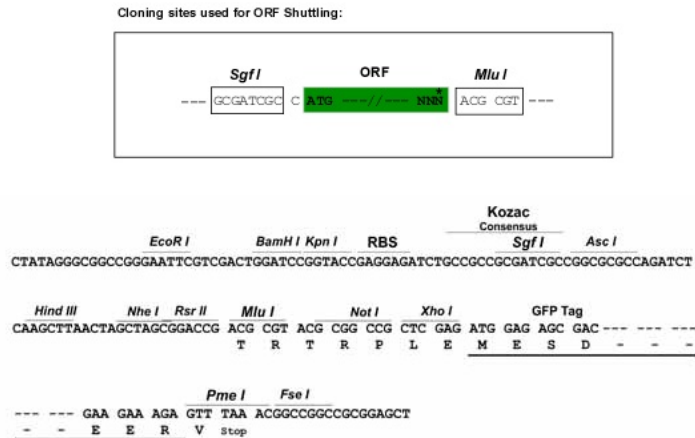
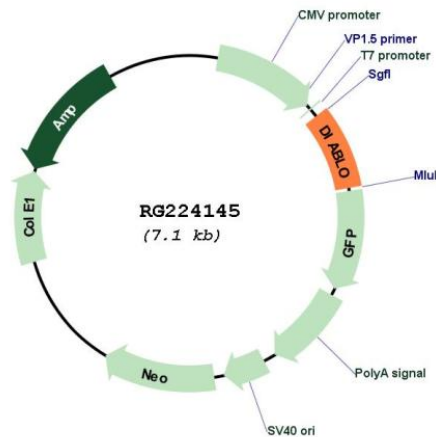
MKSDFYFQKSEPHLSSEALMRRVSLVTDSTSTFLSQTYYALIEAITEYTKAVYTLTSLYRQYTSLLGK
 MNSEEEDEVQVIIGARAEMTSKHQEYLKLETTWMTAVGLSEMAAEAAAYQTGADQASITARNHIQLVKLQ
 VEEVHQLSRKAETKLAEAQIEELRQKTQEEGEERAESEQEAYLRED

TRTRPLE - GFP Tag - V

Restriction Sites: SgfI-MluI



[View online >](#)

Cloning Scheme:

Plasmid Map:


ACCN: NM_138930

ORF Size: 558 bp

OTI Disclaimer: The molecular sequence of this clone aligns with the gene accession number as a point of reference only. However, individual transcript sequences of the same gene can differ through naturally occurring variations (e.g. polymorphisms), each with its own valid existence. This clone is substantially in agreement with the reference, but a complete review of all prevailing variants is recommended prior to use. [More info](#)

OTI Annotation: This clone was engineered to express the complete ORF with an expression tag. Expression varies depending on the nature of the gene.

Components:	The ORF clone is ion-exchange column purified and shipped in a 2D barcoded Matrix tube containing 10ug of transfection-ready, dried plasmid DNA (reconstitute with 100 ul of water).
Reconstitution Method:	<ol style="list-style-type: none">1. Centrifuge at 5,000xg for 5min.2. Carefully open the tube and add 100ul of sterile water to dissolve the DNA.3. Close the tube and incubate for 10 minutes at room temperature.4. Briefly vortex the tube and then do a quick spin (less than 5000xg) to concentrate the liquid at the bottom.5. Store the suspended plasmid at -20°C. The DNA is stable for at least one year from date of shipping when stored at -20°C.
RefSeq:	<u>NM_138930.3</u>
RefSeq Size:	2455 bp
RefSeq ORF:	561 bp
Locus ID:	56616
UniProt ID:	<u>Q9NR28</u>
Cytogenetics:	12q24.31
Protein Families:	Transmembrane
Gene Summary:	This gene encodes an inhibitor of apoptosis protein (IAP)-binding protein. The encoded mitochondrial protein enters the cytosol when cells undergo apoptosis, and allows activation of caspases by binding to inhibitor of apoptosis proteins. Overexpression of the encoded protein sensitizes tumor cells to apoptosis. A mutation in this gene is associated with young-adult onset of nonsyndromic deafness-64. Alternative splicing results in multiple transcript variants encoding different isoforms. [provided by RefSeq, May 2013]